

U.S. PUBLIC LAND SURVEY MONUMENT RECORD - GRANT COUNTY, WI

Section 29, Town 2 North Range 1 West, Town of Smelser (a)

NOTE: This form is intended and designed to fulfill all requirements of the Wisconsin Administrative Code Chapter A-E 7.08, U.S. Public Land Survey Monument Record (3) (a) (b) (c) (d) (e) (f) (g) (h) (i).

CERTIFICATE: (i)

I, Aaron J. Austin, Wisconsin Professional Land Surveyor, do hereby certify that the corner location on this record was determined by me and/or under my direct supervision and that this U.S. Public Land Survey Monument Record is correct and complete to the best of my knowledge and belief.

Dated this 14th day of October, 2022.

Aaron J. Austin
Aaron J. Austin, S-2922



⊕ = CORNER LOCATION

Grant County Coordinates:
NAD 83 (2011)
Northing: 439,448.96
Easting: 869,246.82

HISTORY OF CORNER ESTABLISHMENT:

Original corner was set in 1832 by Lucius Lyon.
Bruce Bowden set a 3/4" Rebar and prepared a Survey Monument Record.

DESCRIPTION OF CORNER EVIDENCE FOUND: (b) (f) (g) (h)

I found the 3/4" Rebar and three witness corners Bowden set. I set one additional witness corner after I verified the Monument's location with G.P.S. and E.D.M. methods.

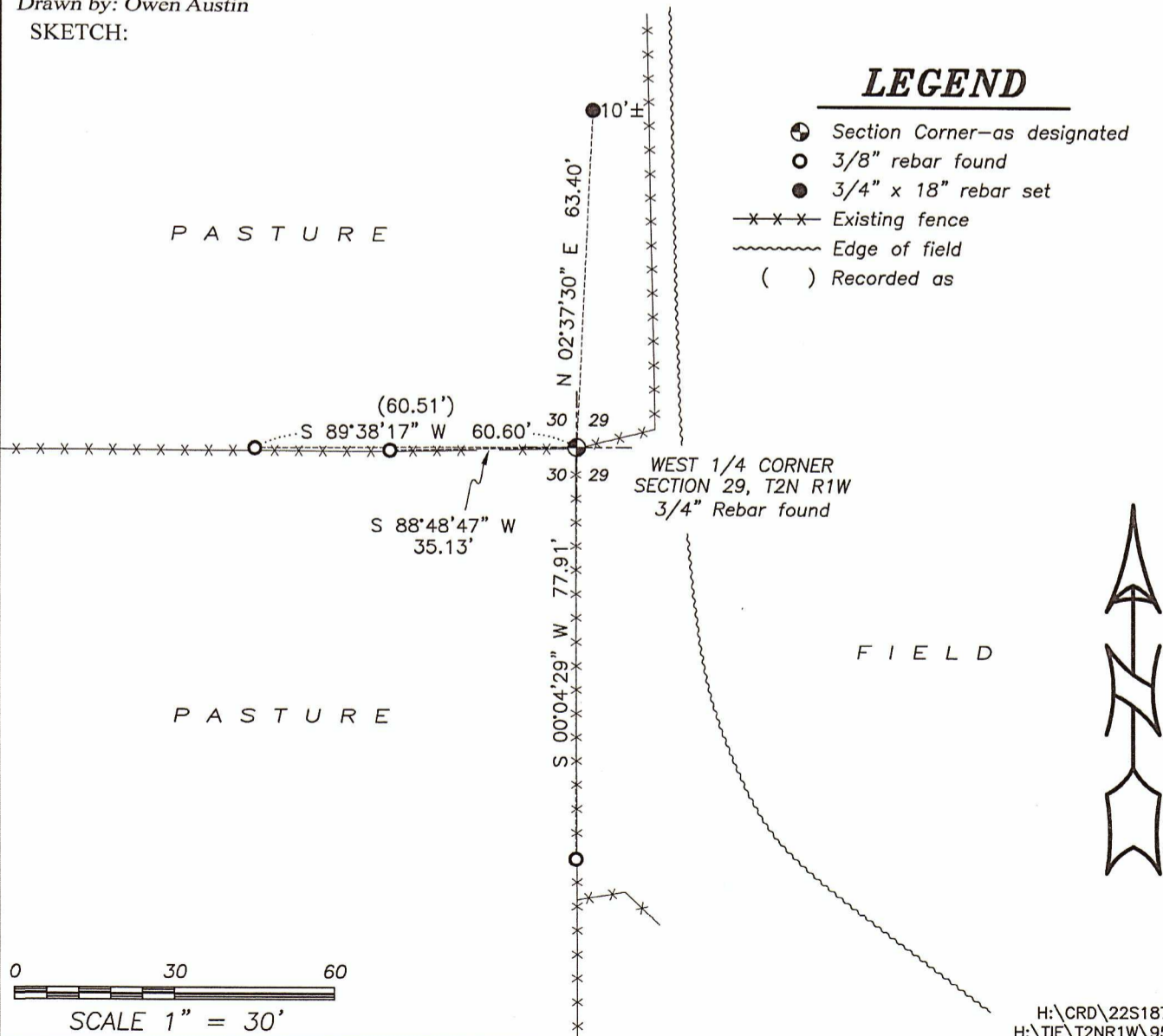
DESCRIPTION OF CORNER AND WITNESS MONUMENTS, references and accessories used to perpetuate the original or re-established location of this corner. (c) (d) (e)

Witnesses to corner location Owen Austin.
Drawn by: Owen Austin

SKETCH:

LEGEND

- ⊕ Section Corner—as designated
- 3/8" rebar found
- 3/4" x 18" rebar set
- x-x-x- Existing fence
- ~~~~~ Edge of field
- () Recorded as



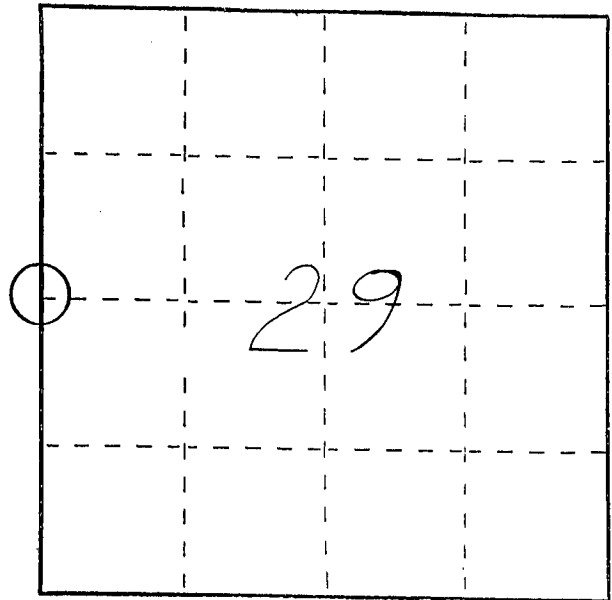
U. S. PUBLIC LAND SURVEY MONUMENT RECORD

INSTRUCTIONS: This record shall show the location of the corner and shall include all of the following nine elements (a through i). FEB 13 1992

(a) Identify the corner by reference to the U.S. public land survey system.

○ = Corner monument restored.

WEST 1/4 CORNER OF
SECTION 29
TOWN 2 NORTH
RANGE 1 WEST
GRANT COUNTY, WI.



(b) Describe any record evidence, monument evidence, occupational evidence, testimonial evidence or any other material evidence you considered, and whether the monument was found or placed.

MONUMENT SET FROM EXISTING PHYSICAL EVIDENCE OF FENCES AFTER VERIFICATION BY PROPORTIONATE MEASUREMENTS FROM AN EDM TRAVERSE OF THE AREA.

(c) In the plan view drawing below, provide reference ties to at least 4 witness monuments, or, if the location is within a municipality, to at least 2 witness monuments. (Witness monuments shall be made of concrete, natural stone, iron or other equally durable material, ~~except wood~~.) Describe witness monuments.

(d) Show a plan view drawing depicting the relevant monuments and reference ties which is sufficient in detail to enable accurate relocation of the corner monument if the corner monument is disturbed. Indicate north.

