

# U. S. PUBLIC LAND SURVEY MONUMENT RECORD

**INSTRUCTIONS :**

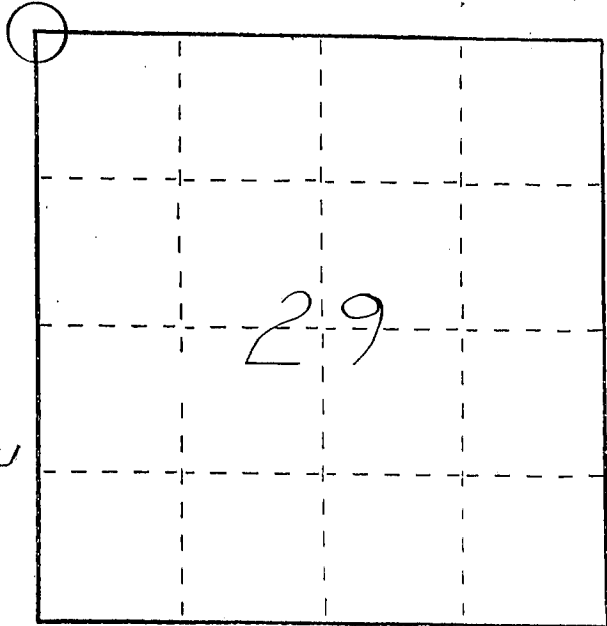
This record shall show the location of the corner and shall include all of the following nine elements (a through i).

FEB 11 1992

- (a) Identify the corner by reference to the U.S. public land survey system.

○ = Corner monument restored.

NORTHWEST CORNER  
SECTION 29  
TOWN 2 NORTH  
RANGE 1 WEST  
SMELSER TOWNSHIP  
GRANT COUNTY, WISCONSIN



- (b) Describe any record evidence, monument evidence, occupational evidence, testimonial evidence or any other material evidence you considered, and whether the monument was found or placed.

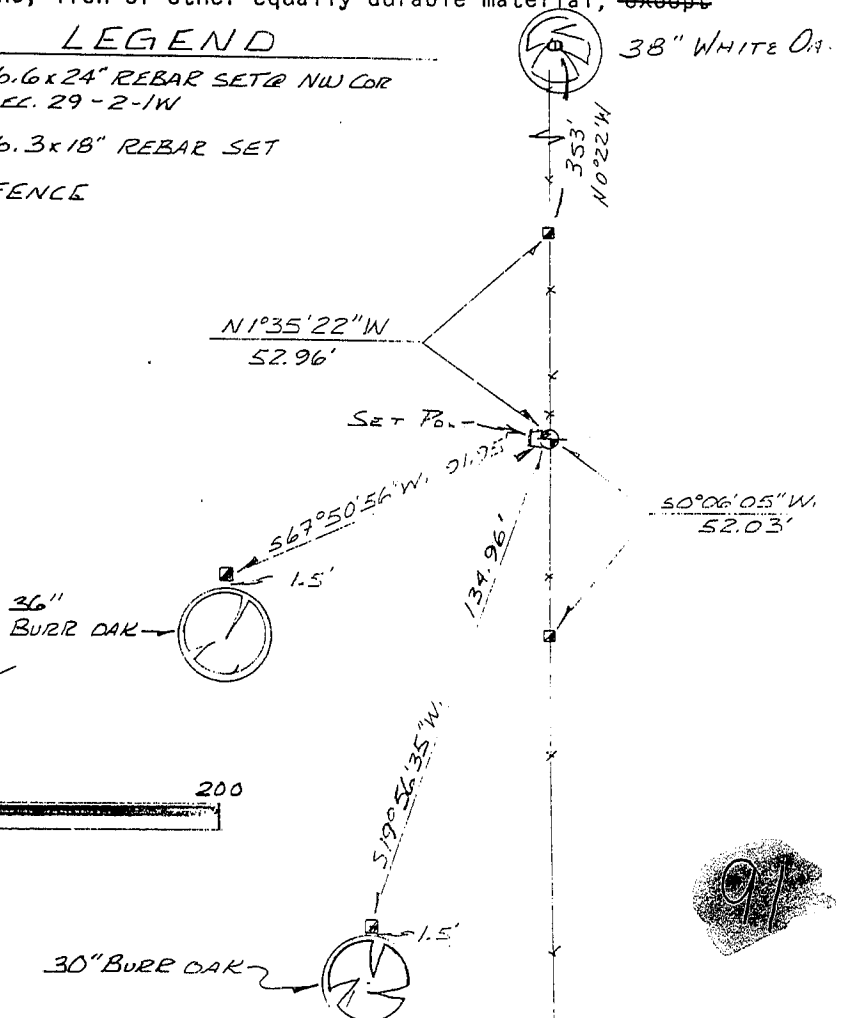
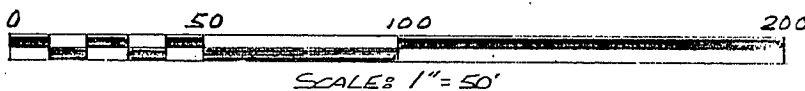
MONUMENT SET FROM EXISTING PHYSICAL EVIDENCE OF FENCES AFTER VERIFICATION BY PROPORTIONATE MEASUREMENTS FROM AN EDM TRAVERSE OF THE AREA.

- (c) In the plan view drawing below, provide reference ties to at least 4 witness monuments, or, if the location is within a municipality, to at least 2 witness monuments. (Witness monuments shall be made of concrete, natural stone, iron or other equally durable material, ~~except~~ wood.) Describe witness monuments.

**LEGEND**

- (d) Show a plan view drawing depicting the relevant monuments and reference ties which is sufficient in detail to enable accurate relocation of the corner monument if the corner monument is disturbed. Indicate north.

- ⊕ No. 6 x 24" REBAR SET @ NW COR SEC. 29 - 2 - 1W
- ⊠ No. 3 x 18" REBAR SET
- FENCE



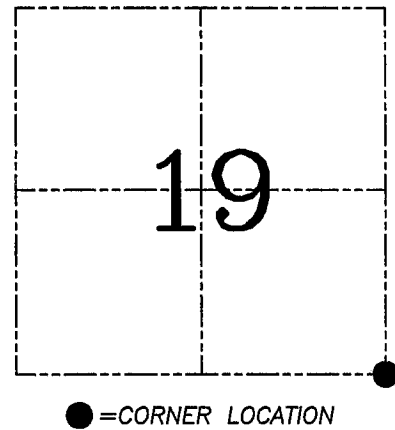
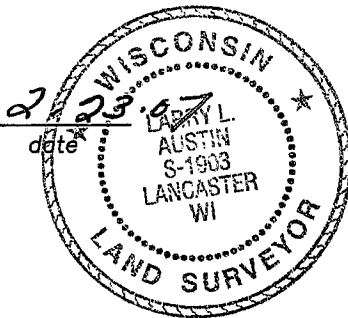
9/

**U.S. PUBLIC LAND SURVEY MONUMENT RECORD – GRANT COUNTY, WI**  
**Section 19, Town 2 North Range 1 West, Town of Smelser**

CERTIFICATE

I, Larry L. Austin, do hereby certify that the corner location on this record was determined by me and/or under my direct supervision and that this U.S. public land survey monument record is correct and complete to the best of my knowledge and belief.

*Larry L. Austin*  
 Larry L. Austin, S-1903



HISTORY OF CORNER ESTABLISHMENT

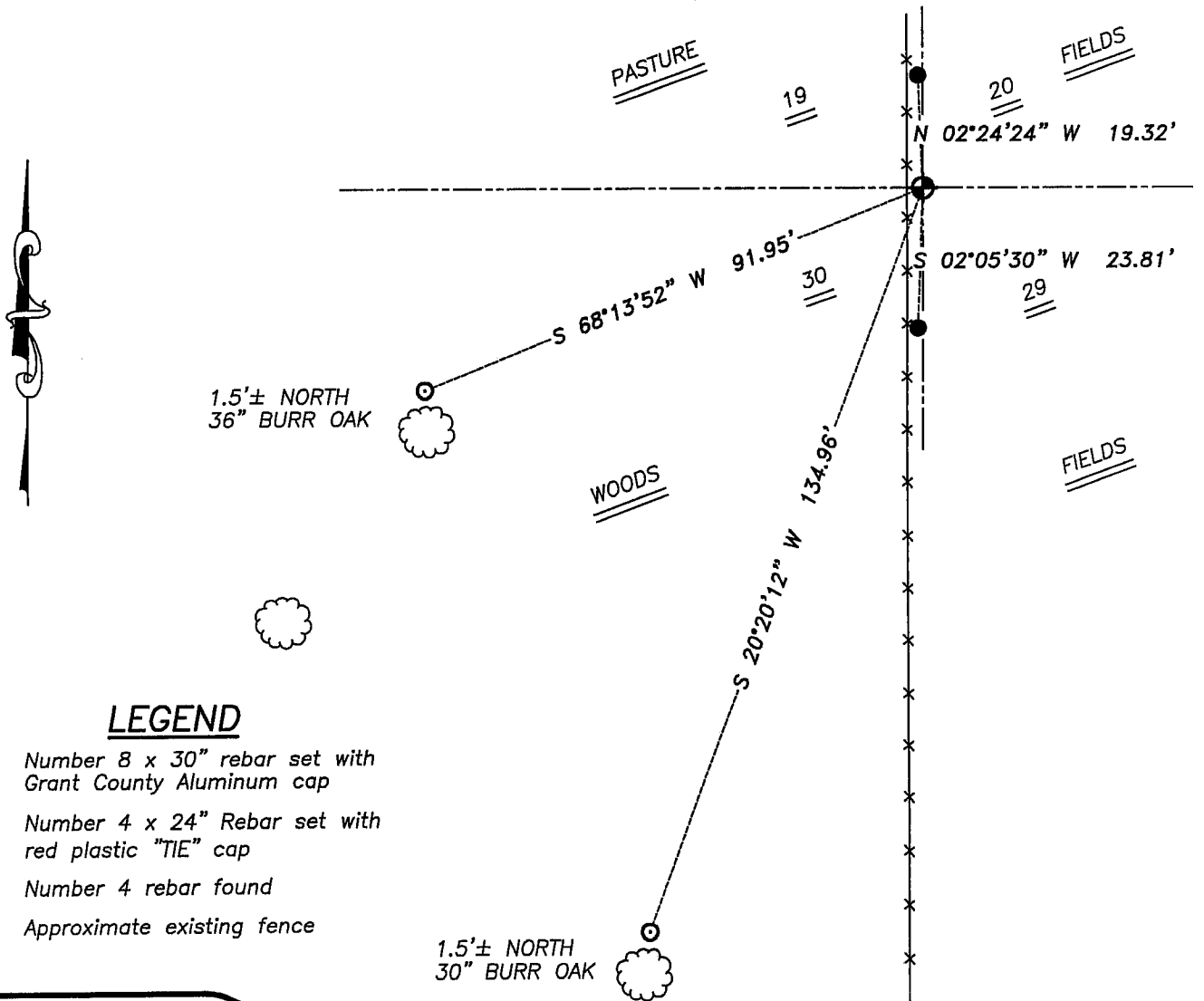
Corner was originally set in 1832 by Lyon. In 1992 Bowden set and tied the corner. No other record of the corner was found.

DESCRIPTION OF CORNER EVIDENCE FOUND

I was unable to locate the existing monument and two ties due to heavy bulldozing. I reset the corner based on existing two ties. Verified this location using EDM & GPS methods.

DESCRIPTION OF CORNER AND WITNESS MONUMENTS, references and accessories used to perpetuate the original or re-established location of this corner. Witnesses to corner location Bobby Sedgwick & Brad Digman & Shelby Blindert

**SKETCH:**



**LEGEND**

- Number 8 x 30" rebar set with Grant County Aluminum cap
- Number 4 x 24" Rebar set with red plastic "TIE" cap
- ⊙ Number 4 rebar found
- x— Approximate existing fence

SKETCH NOT TO SCALE



**Austin Engineering LLC**

4211 HWY 81 E, LANCASTER, WI 53813  
 PHONE 608-723-6363 FAX 608-723-6702

JOB NUMBER 06S124  
 FIELDBOOK: TDSR, 2503  
 G:\T2NR1W\17  
 H:\TIE\T2NR1W\91

DRAWN BY: SW AUSTIN  
 APPROVED: LL AUSTIN