

U.S. PUBLIC LAND SURVEY MONUMENT RECORD - GRANT COUNTY, WI

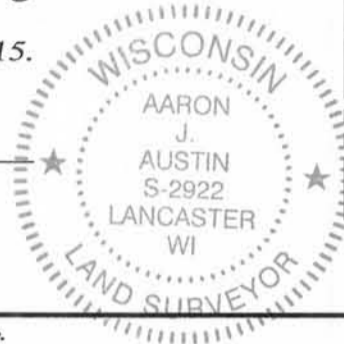
Section 29, Town 2 North Range 1 West, Town of Smelser

CERTIFICATE:

I, Aaron J. Austin, Professional Wisconsin Land Surveyor, do hereby certify that the corner location on this record was determined by me and/or under my direct supervision and that this U.S. Public Land Survey Monument Record is correct and complete to the best of my knowledge and belief.

Dated this 14th day of January, 2015.

Aaron J. Austin
 Aaron J. Austin, S-2922



● = CORNER LOCATION

HISTORY OF CORNER ESTABLISHMENT:

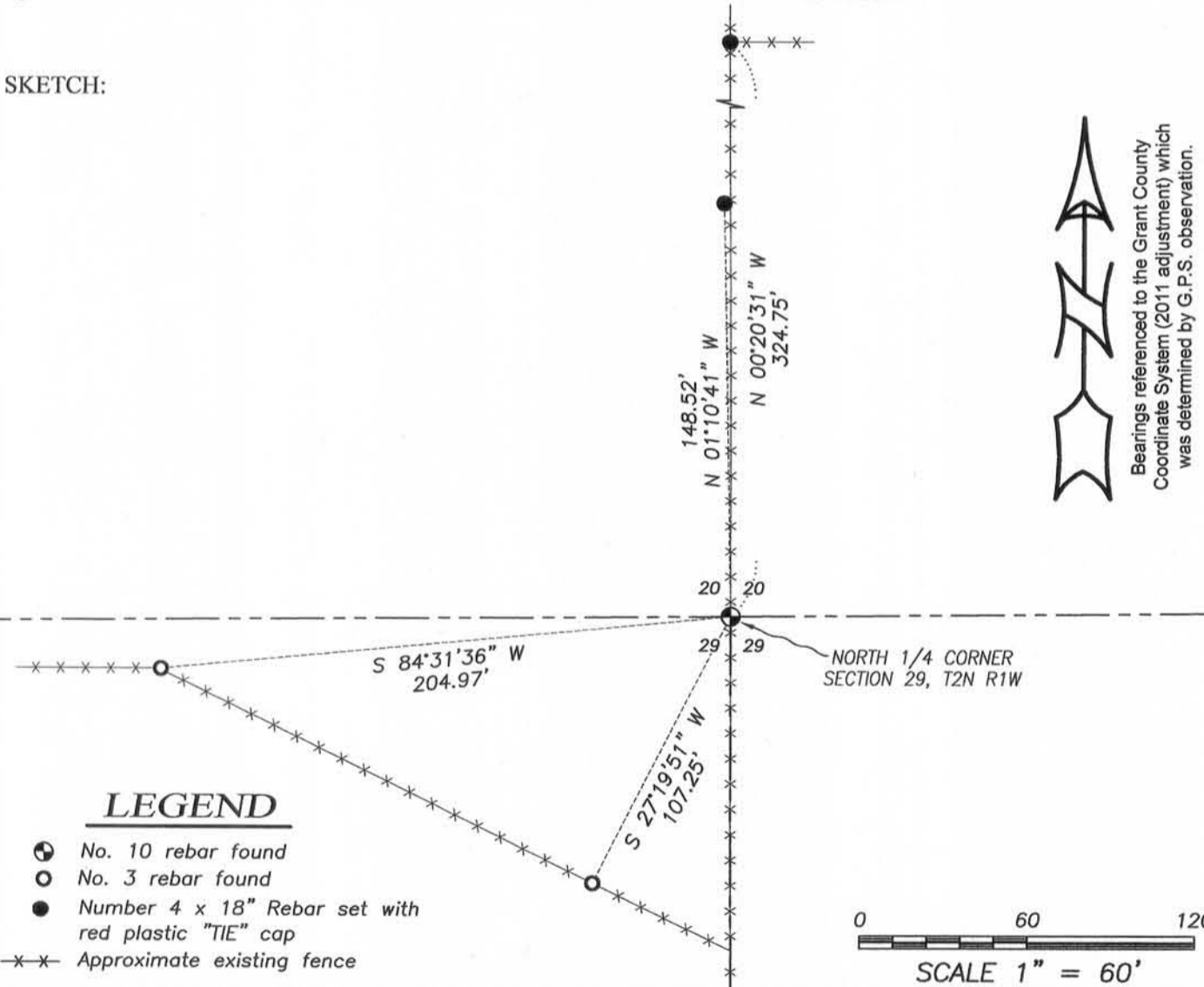
- 1832-Lucius Lyon set original corner.
- 1853-John Everett found original corner on a Survey in Book B, Page 325 & 326.
- 1992-Bruce Bowden tied to the corner on a survey in Book Q, Page 78.
- 1992 Bruce Bowden set and tied the corner on a U.S. Public Land Survey Monument Record.
- 2003-Larry Austin tied to the corner on Certified Survey Map No. 1004.
- 2003-Larry Austin tied to the corner on a Survey in Book 13, Page 64.

DESCRIPTION OF CORNER EVIDENCE FOUND:

I found and accepted the No. 10 rebar set by Bruce Bowden. I found 2 existing ties and set 2 new ones. The corner was verified by G.P.S. methods.

DESCRIPTION OF CORNER AND WITNESS MONUMENTS, references and accessories used to perpetuate the original or re-established location of this corner. Witnesses to corner location Shane Austin.

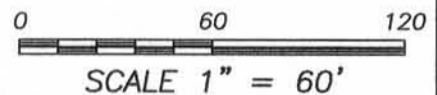
SKETCH:



Bearings referenced to the Grant County Coordinate System (2011 adjustment) which was determined by G.P.S. observation.

LEGEND

- No. 10 rebar found
- No. 3 rebar found
- Number 4 x 18" Rebar set with red plastic "TIE" cap
- x-x- Approximate existing fence



4211 HWY 81 E, LANCASTER, WI 53813
 PHONE: 608-723-6363 FAX: 608-723-6702

JOB NO: 14s124
 H:\CRD\14s124-WIEDERHOLT
 H:\TIE\T2NR1W\90

FIELDBOOK: TDSR
 DRAWN BY: AJ AUSTIN
 CREW: SW AUSTIN

U. S. PUBLIC LAND SURVEY MONUMENT RECORD

FEB 13 1992

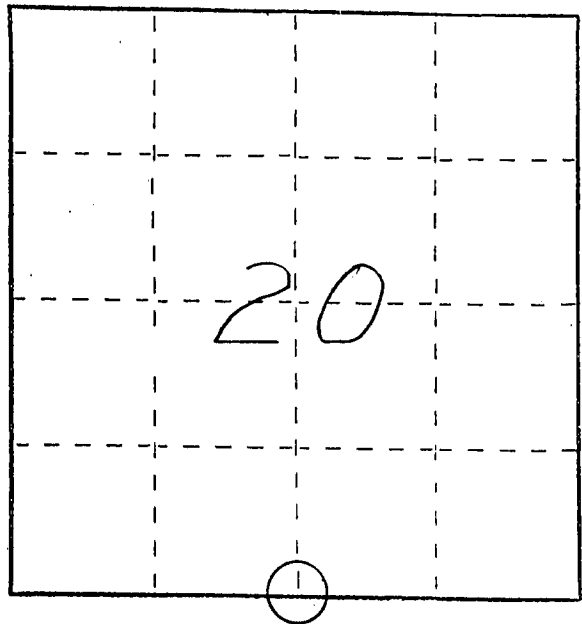
INSTRUCTIONS :

This record shall show the location of the corner and shall include all of the following nine elements (a through i).

- (a) Identify the corner by reference to the U.S. public land survey system.

○ = Corner monument restored.

SOUTH 1/4 CORNER
SECTION 20
TOWN 2 NORTH
RANGE 1 WEST
SMELSER TOWNSHIP
GRANT COUNTY, WI



- (b) Describe any record evidence, monument evidence, occupational evidence, testimonial evidence or any other material evidence you considered, and whether the monument was found or placed.

MONUMENT SET FROM EXISTING PHYSICAL EVIDENCE OF FENCES, AFTER VERIFICATION BY PROPORTIONATE MEASUREMENTS FROM AN EDM TRAVERSE OF THE AREA.

- (c) In the plan view drawing below, provide reference ties to at least 4 witness monuments, or, if the location is within a municipality, to at least 2 witness monuments. (Witness monuments shall be made of concrete, natural stone, iron or other equally durable material, ~~except wood.~~) Describe witness monuments.

- (d) Show a plan view drawing depicting the relevant monuments and reference ties which is sufficient in detail to enable accurate relocation of the corner monument if the corner monument is disturbed. Indicate north.



LEGEND

- ⊕ No. 10 x 30" REINFORCING BAR SET @ S 1/4 COR. SEC. 20-2-1W
- ⊞ No. 3 x 18" REINFORCING BAR SET
- FENCE

