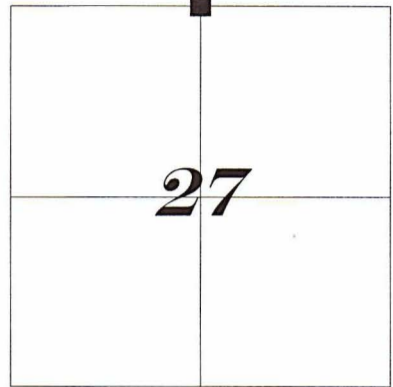


U.S. PUBLIC LAND SURVEY MONUMENT RECORD GRANT COUNTY, WISCONSIN

CORNER:
NORTH 1/4 CORNER
SECTION 27, T 2 N, R 1 W
GRANT COUNTY, WISCONSIN

Grant County Coordinates:
NAD 83 (2011)

Northing = 442,203.78
Easting = 882,438.14



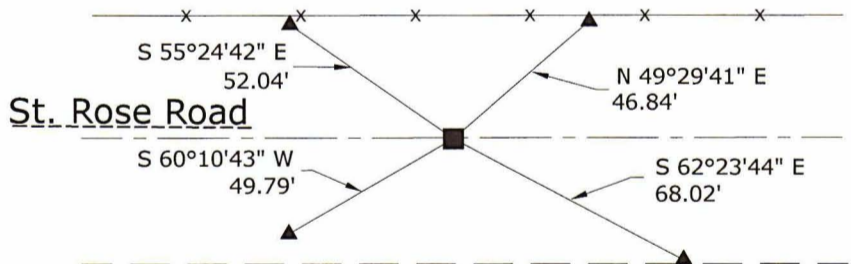
History of original corner establishment and subsequent restorations and descriptions of any record. Monument, occupation, testimonial or other evidence considered.

Record of evidence is the original Government survey in 1832 by Lucious Lyon. In 1993 Larry Austin set a Rail Road Spike and filed a U.S. Public Land Survey Record. In 2009 Daniel Paulson shows the corner on his survey.

I found the rail road spike set by Bowden, but did not locate any ties. I accepted the location and set four new ties after verifying the monument location with G.P.S. and E.D.M. methods.

LEGEND

- = Found Rail Road Spike
- ▲ = Set 3/4"x 18" rebar



NOT TO SCALE

I, Joseph D. Niles, Wisconsin Professional Land Surveyor, S-2896, certify that the corner location shown on this record was determined by me of under my direction and control and that this U.S. Public Land Survey Monument record is correct and complete to the best of my knowledge and belief.

Dated this 15th day of February, 2023


Joseph D. Niles, S-2896
Professional Land Surveyor



U. S. PUBLIC LAND SURVEY MONUMENT RECORD

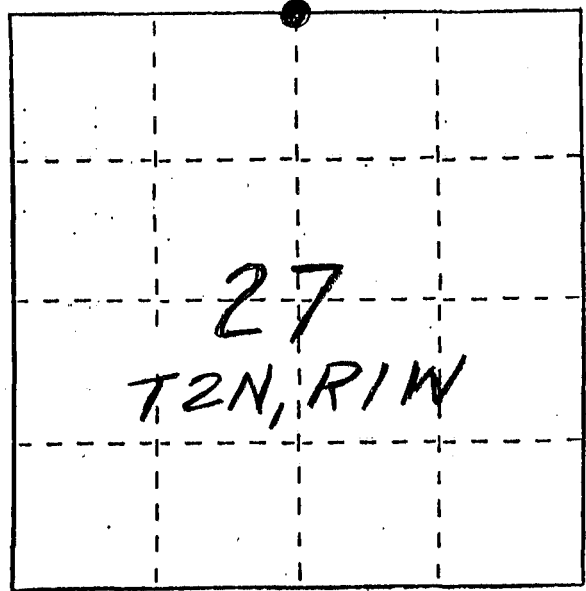
INSTRUCTIONS:

This record shall show the location of the corner and shall include all of the following nine elements (a through i).

(a) Identify the corner by reference to the U.S. public land survey system.

● = Corner monument restored.

*NORTH 1/4 CORNER, SEC. 27
T2N, R1W; SMELSER TWP.,
GRANT CO., WI*



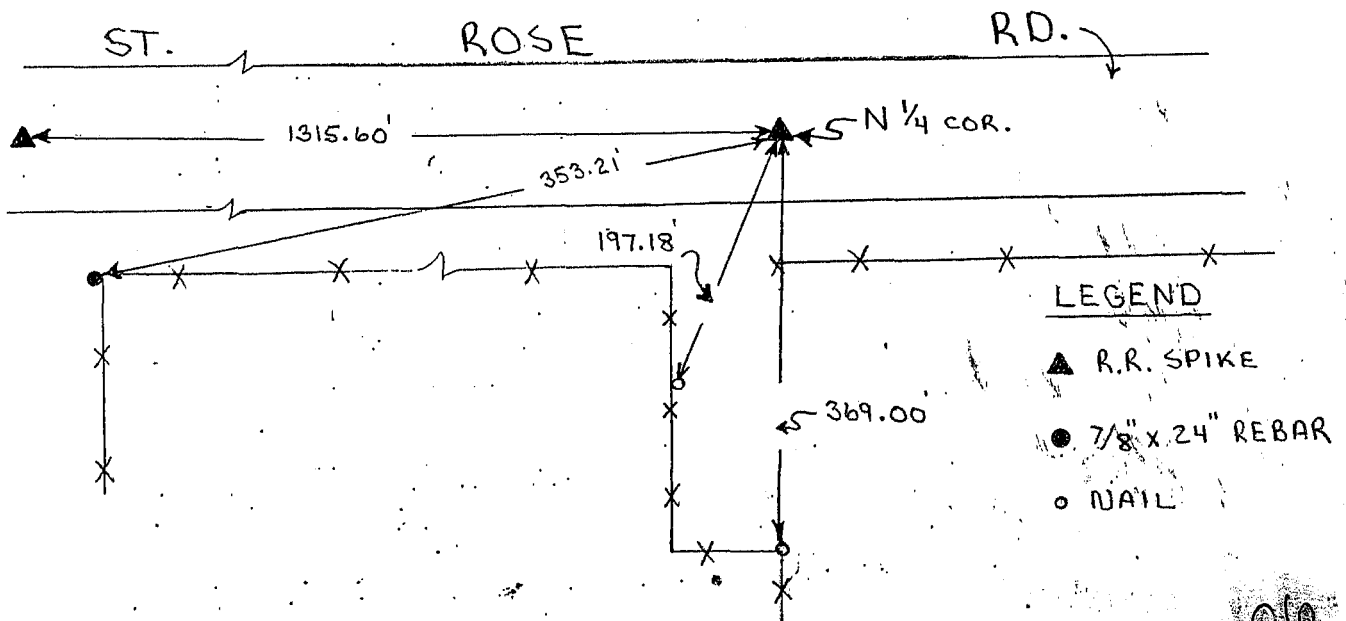
JUN 14 1993

(b) Describe any record evidence, monument evidence, occupational evidence, testimonial evidence or any other material evidence you considered, and whether the monument was found or placed.

CORNER WAS PLACED BASED ON OCCUPATIONAL EVIDENCE & VERIFIED BY EDM TRAVERSE

(c) In the plan view drawing below, provide reference ties to at least 4 witness monuments, or, if the location is within a municipality, to at least 2 witness monuments. (Witness monuments shall be made of concrete, natural stone, iron or other equally durable material.) Describe witness monuments.

(d) Show a plan view drawing depicting the relevant monuments and reference ties which is sufficient in detail to enable accurate relocation of the corner monument if the corner monument is disturbed. Indicate north.



(e) Describe any material discrepancy between the location of the corner as restored or reestablished and the location of that corner as previously restored or reestablished by distance and direction. Show the discrepancy on the plan view drawing under (d), above. Show the distances between the corner as previously restored or reestablished and (1) the corner as restored or reestablished, and (2) to at least 2 of the witness monuments shown on the drawing in (d), above.

None

(f) Was the corner restored through acceptance of (1) an obliterated evidence location, or, (2) a found perpetuated location?

(2) FOUND PERPETUATED LOCATION

(g&h) Was the corner reestablished through lost corner proportionate methods? If so, show the method, including the directions and distances to other public land survey corners used as evidence or used for proportioning in determining the corner location?

No.

(i) I, LARRY L. AUSTIN
(type or print name) certify that the corner location shown on this record was determined by me or under my direction and control and that this U.S. Public Land Survey Monument Record is correct and complete to the best of my knowledge and belief.

Larry L. Austin
Signature

12/29/89
Date

