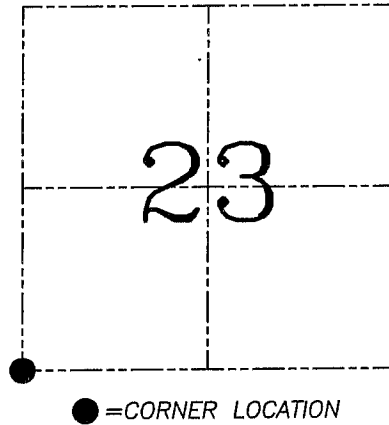
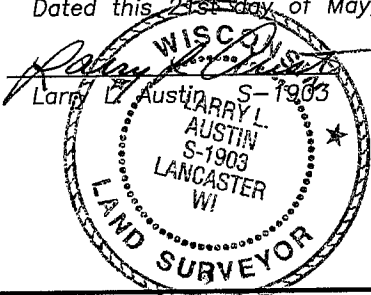


U.S. PUBLIC LAND SURVEY MONUMENT RECORD – GRANT COUNTY, WI
Section 23, Town 2 North Range 1 West, Town of Smelser

CERTIFICATE

I, Larry L. Austin, do hereby certify that the corner location on this record was determined by me and/or under my direct supervision and that this U.S. public land survey monument record is correct and complete to the best of my knowledge and belief.

Dated this 21st day of May, 2004



HISTORY OF CORNER ESTABLISHMENT

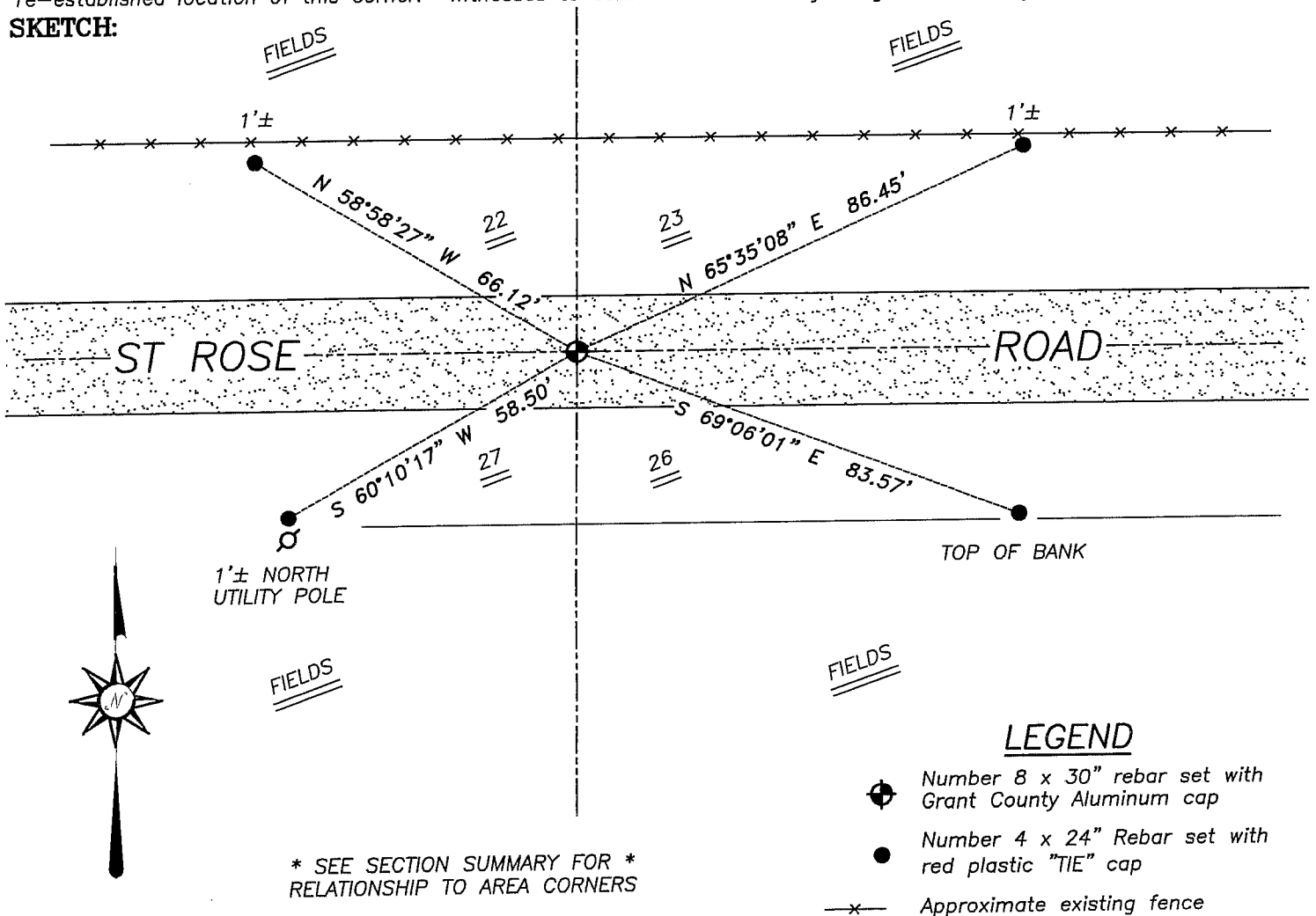
Corner was originally set in 1832 by Lucius Lyon.
 No other record of the corner was found.

DESCRIPTION OF CORNER EVIDENCE FOUND

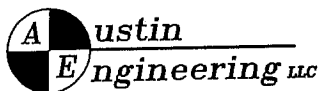
I found no evidence of the original corner location. I reset the corner proportionately between the South 1/4 of Section 22 and the South 1/4 of Section 23. Verified this location using EDM & GPS methods.

DESCRIPTION OF CORNER AND WITNESS MONUMENTS, references and accessories used to perpetuate the original or re-established location of this corner. Witnesses to corner location Bobby Sedgwick & Shelby Blindert & Brad Hazen

SKETCH:



SKETCH NOT TO SCALE



4211 HWY 81 E, LANCASTER, WI 53813
 PHONE 608-723-6363 FAX 608-723-6702

JOB NUMBER 04S137
 FIELDBOOK: TSDR, 2331
 G:\T2NR1W\T2NR1W
 H:\TIE\T2NR1W\85

DRAWN BY: SW AUSTIN
 APPROVED: LL AUSTIN