

U.S. PUBLIC LAND SURVEY MONUMENT RECORD - GRANT COUNTY, WI

Section 23, Town 2 North Range 1 West, Town of Smelser (a)

NOTE: This form is intended and designed to fulfill all requirements of the Wisconsin Administrative Code Chapter A-E 7.08, U.S. Public Land Survey Monument Record (3) (a) (b) (c) (d) (e) (f) (g) (h) (i).

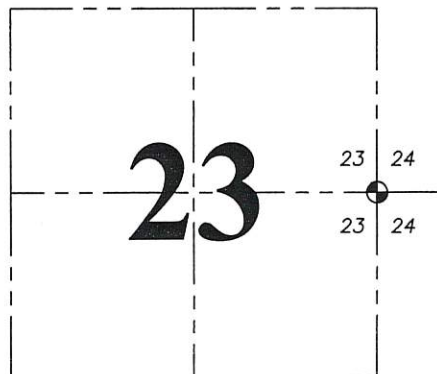
CERTIFICATE: (i)

I, Aaron J. Austin, Wisconsin Professional Land Surveyor, do hereby certify that the corner location on this record was determined by me and/or under my direct supervision and that this U.S. Public Land Survey Monument Record is correct and complete to the best of my knowledge and belief.

Dated this 14th day of August, 2017.

Aaron J. Austin (handwritten signature)

Aaron J. Austin, S-2922



⊕ = CORNER LOCATION

HISTORY OF CORNER ESTABLISHMENT:

Original corner was set by Lucius Lyon in 1832.

Larry Austin reset the corner in 1995.

Larry Austin set four witness monuments and prepared a Survey Monument Record dated 5/19/1999

DESCRIPTION OF CORNER EVIDENCE FOUND: (b) (f) (g) (h)

I found the corner that was set by Larry. I found three witness monuments and set one additional witness monument. The corner's location was verified with G.P.S. and E.D.M. methods

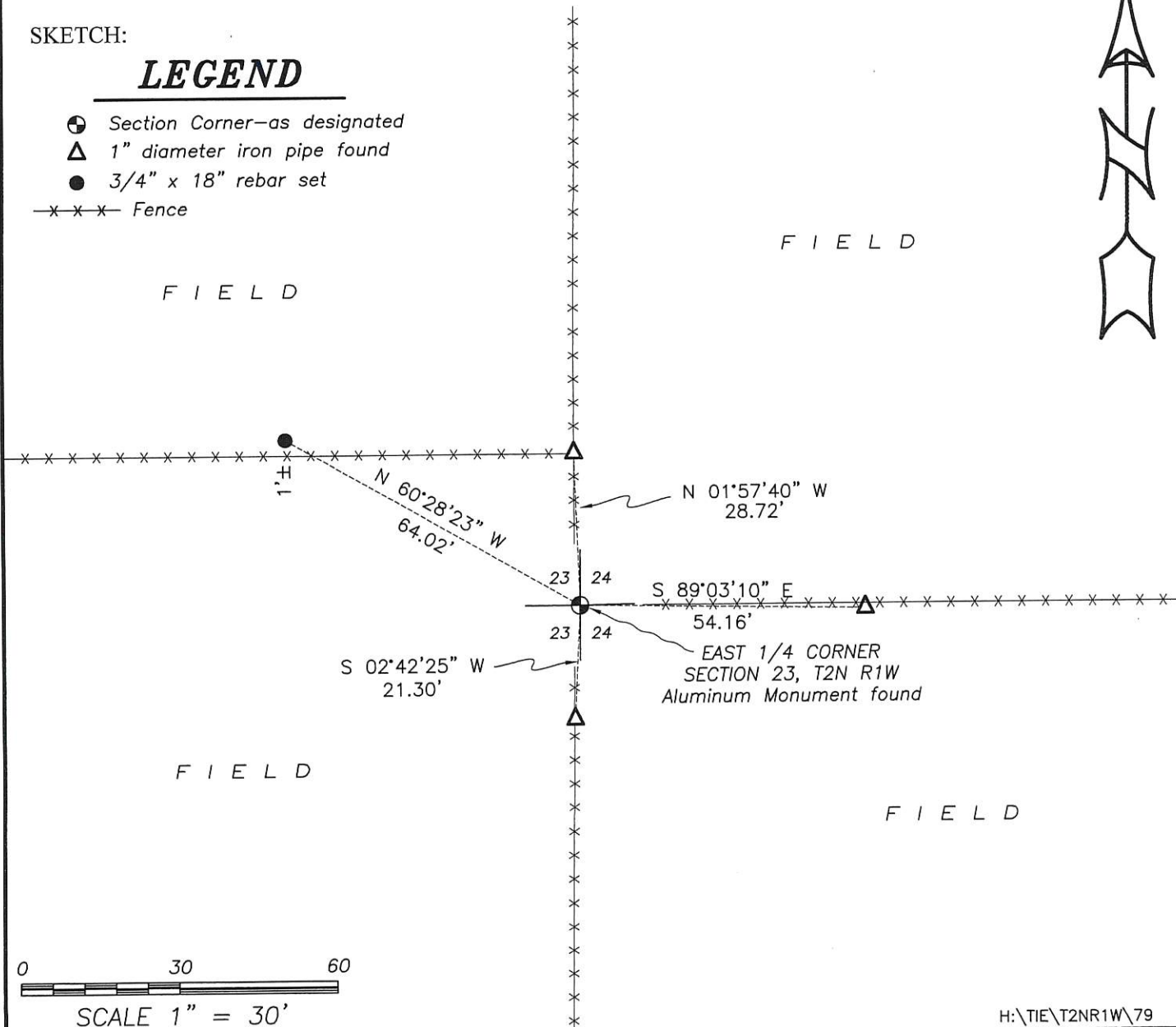
DESCRIPTION OF CORNER AND WITNESS MONUMENTS, references and accessories used to perpetuate the original or re-established location of this corner. (c) (d) (e)

Witnesses to corner location Shane Austin. Drawn by Owen Austin.

SKETCH:

LEGEND

- ⊕ Section Corner-as designated
Δ 1" diameter iron pipe found
● 3/4" x 18" rebar set
-x-x-x- Fence



# GRANT COUNTY CERTIFIED LAND CORNER

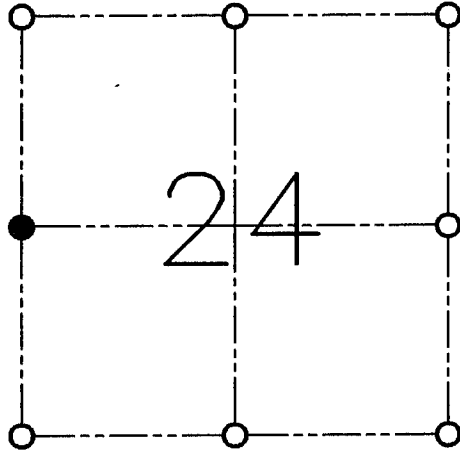
CORNER NO. 79

**CERTIFICATE:**

I, LARRY L. AUSTIN, DO HEREBY CERTIFY THAT ON TWENTY-NINTH DAY OF APRIL, 1999, I FOUND OCCUPATIONAL EVIDENCE OF THE WEST 1/4 OF SECTION 24, TOWN 2 NORTH, RANGE 1 WEST, OF THE FOURTH PRINCIPAL MERIDIAN, AND I RE-ESTABLISHED SAID CORNER ACCORDING TO THE WISCONSIN STATUTES AS SHOWN AND DESCRIBED HEREON.

DATED THIS NINETEENTH DAY OF MAY, 1999

*Larry L. Austin*  
LARRY L. AUSTIN S-1903



● = CORNER LOCATION

**WEST 1/4 CORNER OF  
SECTION 24, T 2 N R 1 W  
TOWN OF SMELSER**

**HISTORY OF ORIGINAL CORNER ESTABLISHMENT:**

CORNER WAS SET IN 1832 BY LUCIUS LYON. IN 1995 I SET THE CORNER.

**DESCRIPTION OF CORNER EVIDENCE FOUND:**

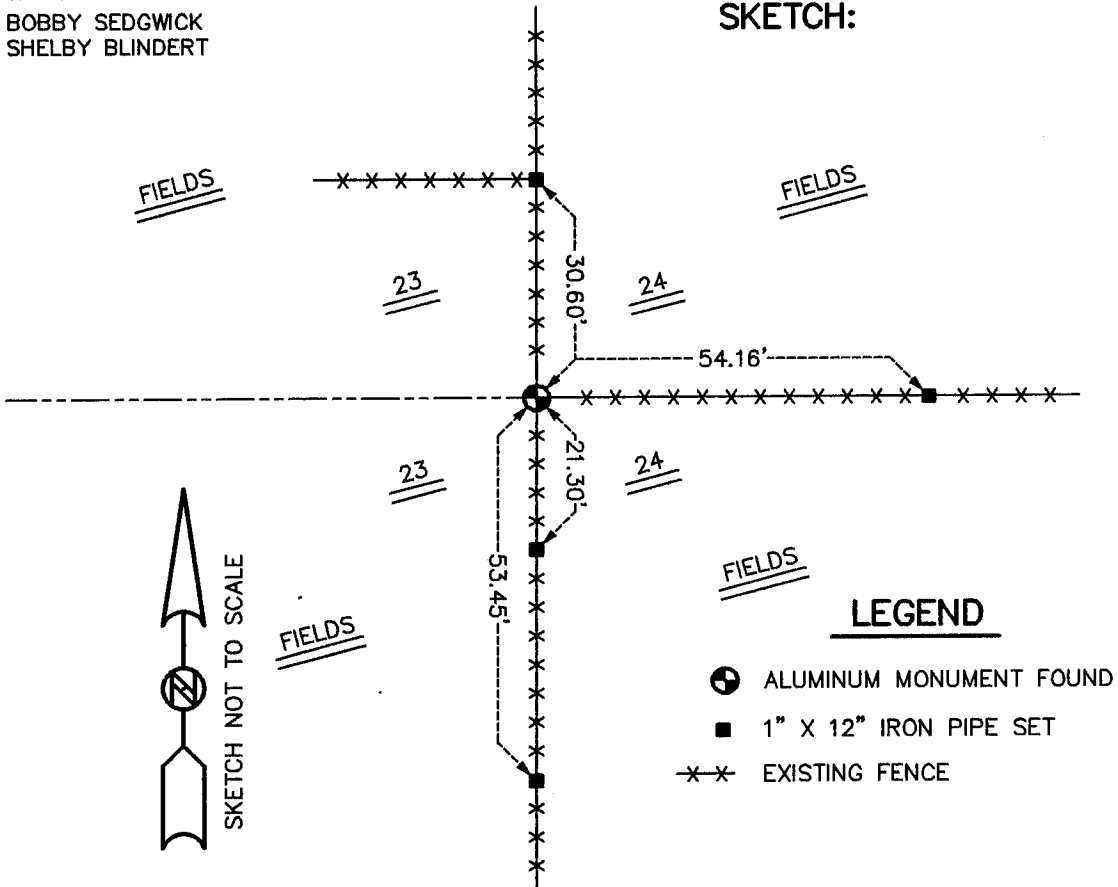
I FOUND THE CORNER I SET IN 1995. I ACCEPTED THIS LOCATION AFTER AN E.D.M. TRAVERSE OF THE AREA.

**DESCRIPTION OF CORNER AND WITNESS MONUMENTS, REFERENCES AND ACCESSORIES USED TO PERPETUATE THE ORIGINAL OR RE-ESTABLISHED LOCATION OF THIS CORNER:**

**WITNESS TO THE CORNER LOCATION:**

BOBBY SEDGWICK  
SHELBY BLINDERT

**SKETCH:**



**LEGEND**

- ⊙ ALUMINUM MONUMENT FOUND
- 1" X 12" IRON PIPE SET
- ×× EXISTING FENCE