

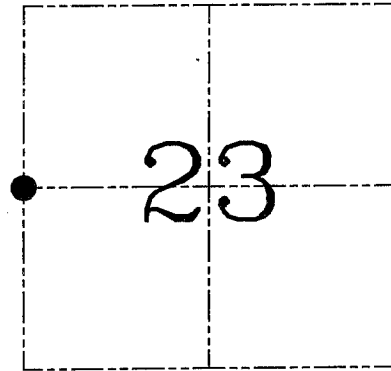
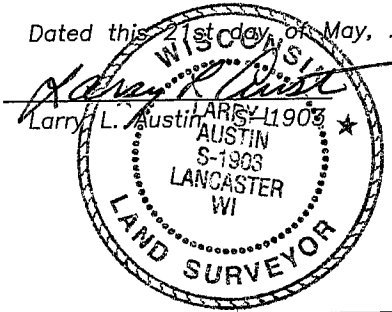
U.S. PUBLIC LAND SURVEY MONUMENT RECORD – GRANT COUNTY, WI

Section 23, Town 2 North Range 1 West, Town of Smelser

CERTIFICATE

I, Larry L. Austin, do hereby certify that the corner location on this record was determined by me and/or under my direct supervision and that this U.S. public land survey monument record is correct and complete to the best of my knowledge and belief.

Dated this 21st day of May, 2004



● = CORNER LOCATION

HISTORY OF CORNER ESTABLISHMENT

Corner was originally set in 1832 by Lucius Lyon. In 1855 Overton tied to the corner. No other record of the corner was found.

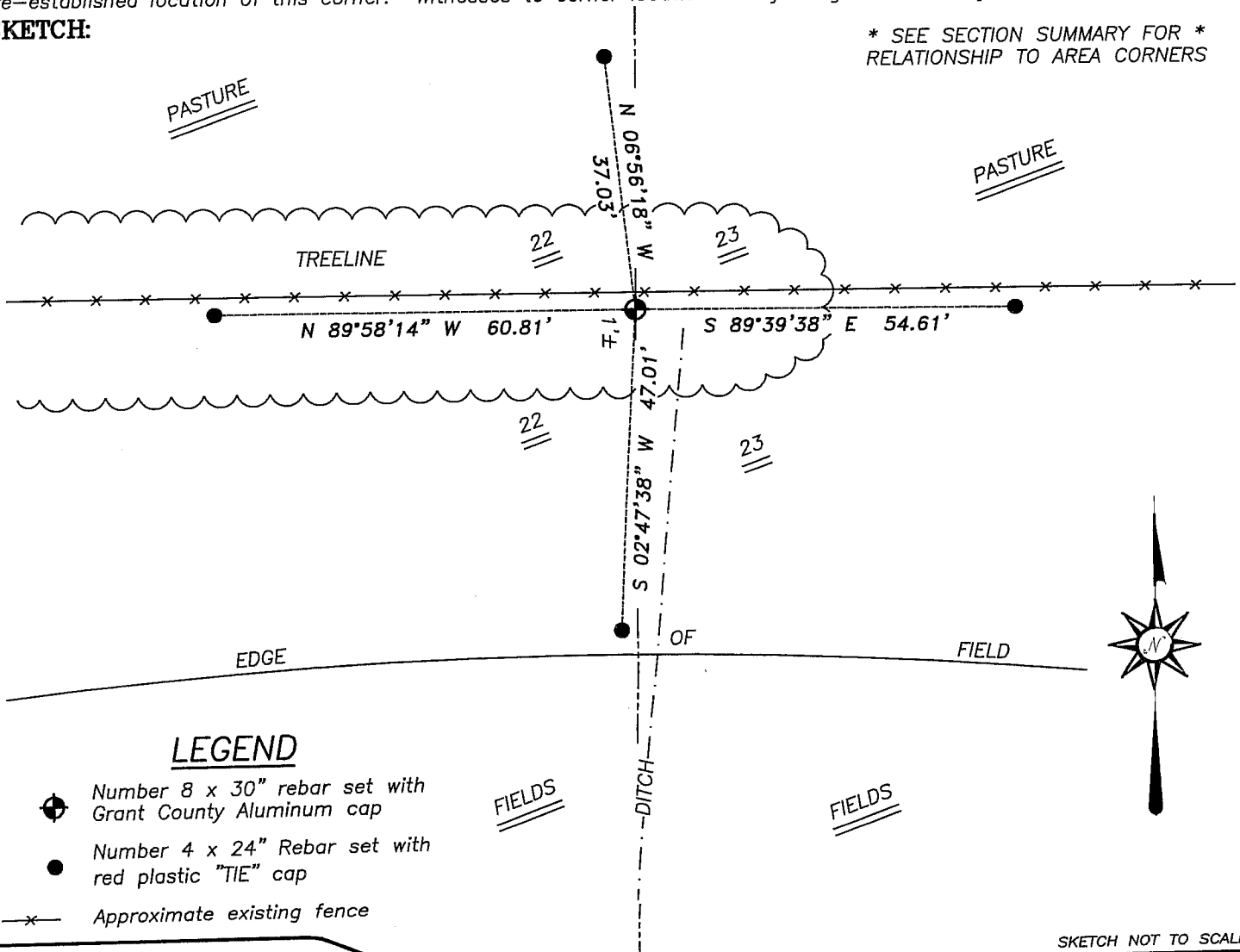
DESCRIPTION OF CORNER EVIDENCE FOUND

I found no evidence of the original corner. I found occupied fence corners East of the this location which were corners of an Overton survey. I doubled the occupied center through the occupied fence corner at the NW corner of the NE 1/4 of the SE 1/4. This location fit well to other corners in the area. Verified this location using EDM & GPS methods.

DESCRIPTION OF CORNER AND WITNESS MONUMENTS, references and accessories used to perpetuate the original or re-established location of this corner. Witnesses to corner location Bobby Sedgwick & Shelby Blindert & Brad Hazen

SKETCH:

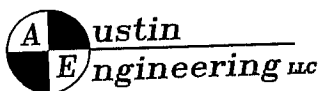
* SEE SECTION SUMMARY FOR *
RELATIONSHIP TO AREA CORNERS



LEGEND

- Number 8 x 30" rebar set with Grant County Aluminum cap
- Number 4 x 24" Rebar set with red plastic "TIE" cap
- x— Approximate existing fence

SKETCH NOT TO SCALE



4211 HWY 81 E, LANCASTER, WI 53813
PHONE 608-723-6363 FAX 608-723-6702

JOB NUMBER 04S137
FIELDBOOK: TSDR, 2331
G:\T2NR1W\T2NR1W
H:\TIE\T2NR1W\78

DRAWN BY: SW AUSTIN
APPROVED: LL AUSTIN