

# GRANT COUNTY

## Survey Monument Record

TYPE OF MONUMENT 3/4" X 24" IRON BAR SET

STATE PLANE COORDINATES: N \_\_\_\_\_  
E \_\_\_\_\_

ELEVATION — M.S.L. DATUM: \_\_\_\_\_

THETA ANGLE: \_\_\_\_\_

FIELD BOOK: 94-18

PAGE \_\_\_\_\_

CORNER NO. \_\_\_\_\_

SECTION 21

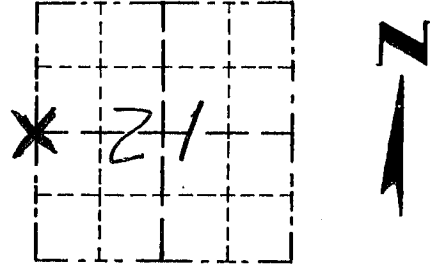
TOWN 2N

RANGE 1W

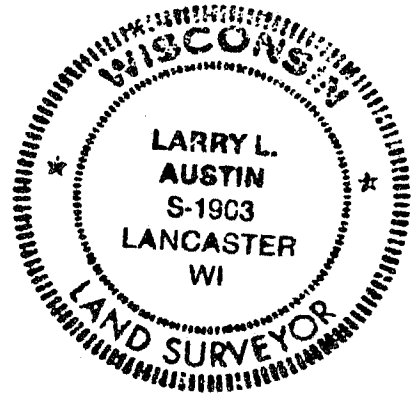
### BASIS FOR MONUMENT LOCATION

(Use reverse side if necessary)

CORNER SET IN 1832 BY LUCIUS LYON, ORIGINAL BEARING TREES WERE UNRECOVERABLE, NO SEAL RECORD OF CORNER FOUND SINCE ORIGINAL SURVEYS. CORNER SET TO REPLACE A FOUND NAIL AT A OCCUPIED CORNER. NORTHING IS A FENCE WEST AND EASTING IS THE CENTERLINE OF HILL ROAD. VERIFIED ITS LOCATION USING EDM METHODS.



LOCATION  
(Indicated by "X")



CERTIFIED CORRECT

*Larry L. Austin*  
Registered Land Surveyor

DATE: 10/8/96

### TIE SKETCH

Show at least three (3) ties and monument

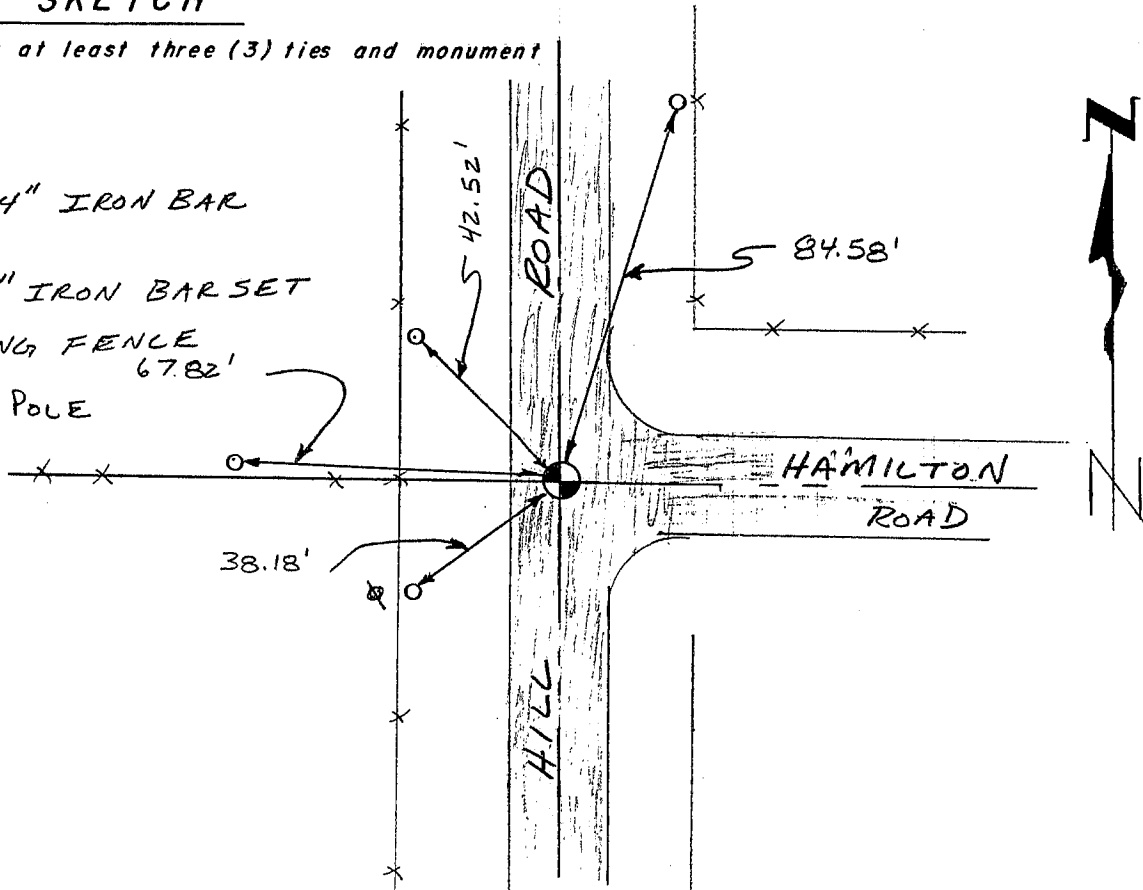
#### LEGEND

⊙ 3/4" X 24" IRON BAR SET

○ 1/2" X 15" IRON BAR SET

XX EXISTING FENCE 67.82'

⊙ POWER POLE



No SCALE