

U.S. PUBLIC LAND SURVEY MONUMENT RECORD - GRANT COUNTY, WI

Section 19, Town 2 North Range 1 West, Town of Smelser (a)

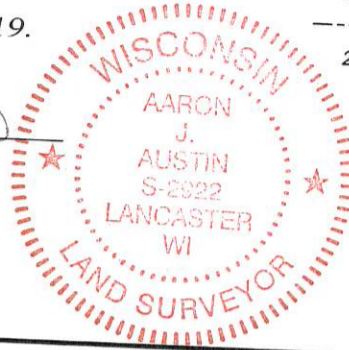
NOTE: This form is intended and designed to fulfill all requirements of the Wisconsin Administrative Code Chapter A-E 7.08, U.S. Public Land Survey Monument Record (3) (a) (b) (c) (d) (e) (f) (g) (h) (i).

CERTIFICATE: (i)

I, Aaron J. Austin, Wisconsin Professional Land Surveyor, do hereby certify that the corner location on this record was determined by me and/or under my direct supervision and that this U.S. Public Land Survey Monument Record is correct and complete to the best of my knowledge and belief.

Dated this 16th day of April, 2019.

Aaron J. Austin
Aaron J. Austin, S-2922



⊕ = CORNER LOCATION

Grant County Coordinates:
NAD 83 (2011)
Northing: 444,680.76
Easting: 863,926.15

HISTORY OF CORNER ESTABLISHMENT:

Lucius Lyon set the original corner in 1832.
Larry Austin set an Aluminum Monument and prepared a Survey Monument Record dated 3/18/1993.

DESCRIPTION OF CORNER EVIDENCE FOUND: (b) (f) (g) (h)

I found the Aluminum Monument and two witness corner as set by Larry Austin. I set two additional witness corners after I verified the monument's location with G.P.S. and E.D.M. methods.

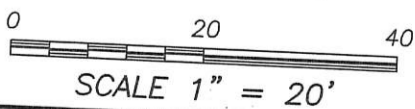
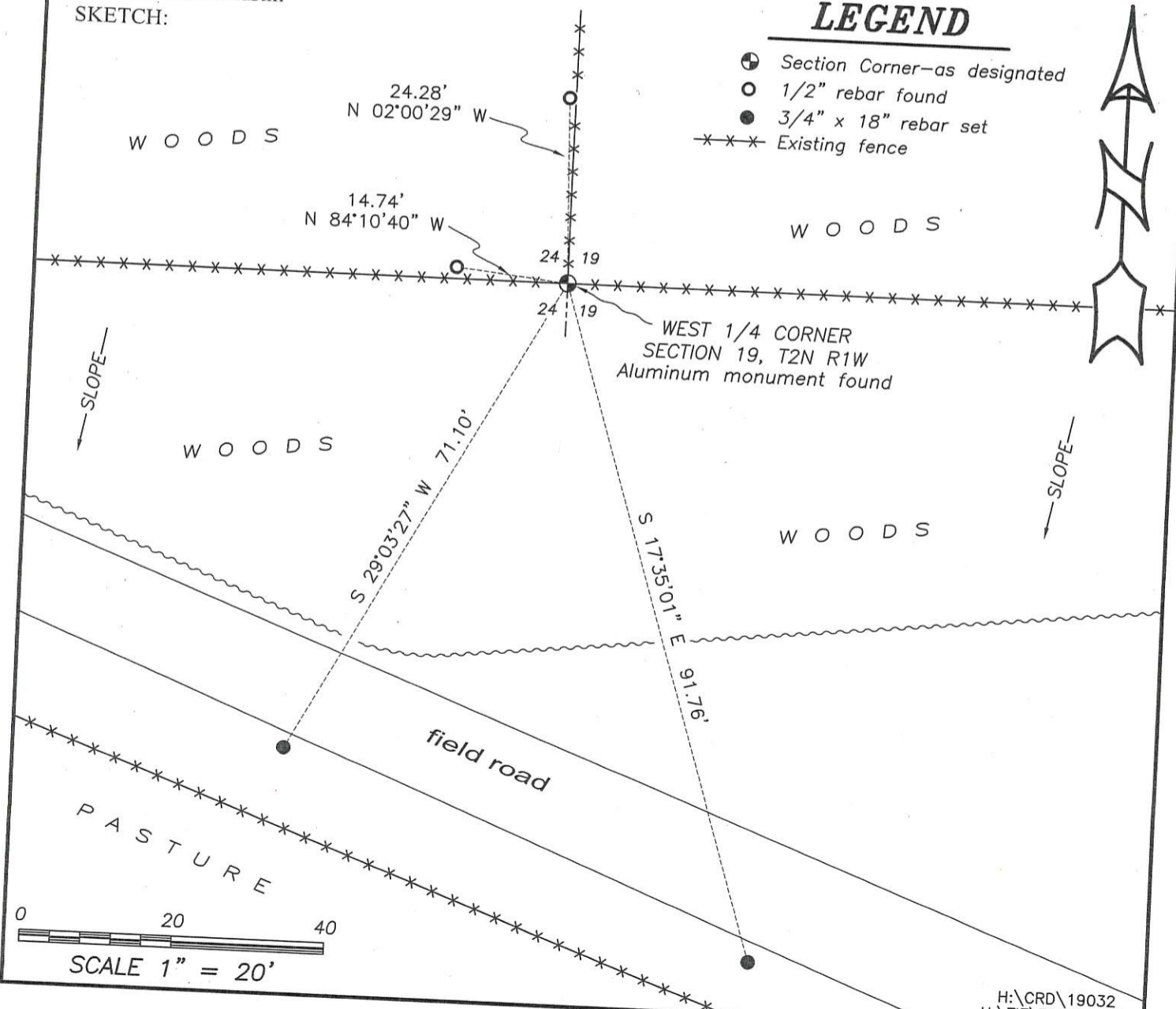
DESCRIPTION OF CORNER AND WITNESS MONUMENTS, references and accessories used to perpetuate the original or re-established location of this corner. (c) (d) (e)

Witnesses to corner location Shane Austin.
Drawn by: Owen Austin

SKETCH:

LEGEND

- ⊕ Section Corner—as designated
- 1/2" rebar found
- 3/4" x 18" rebar set
- *** Existing fence



SCALE 1" = 20'