

U.S. PUBLIC LAND SURVEY MONUMENT RECORD - GRANT COUNTY, WI

Section 18, Town 2 North Range 1 West, Town of Smelser (a)

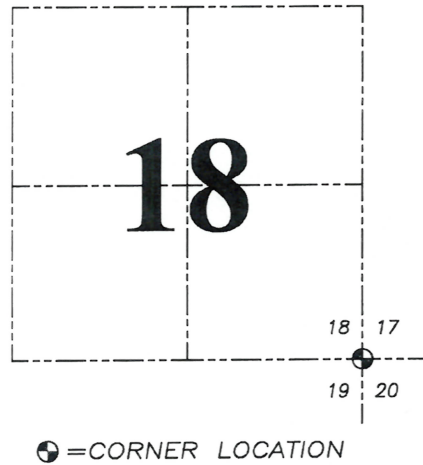
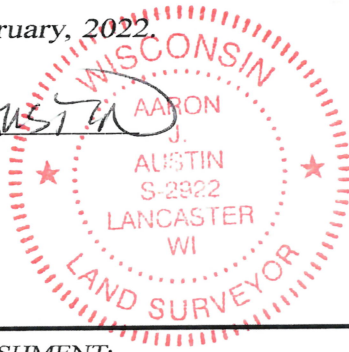
NOTE: This form is intended and designed to fulfill all requirements of the Wisconsin Administrative Code Chapter A-E 7.08, U.S. Public Land Survey Monument Record (3) (a) (b) (c) (d) (e) (f) (g) (h) (i).

CERTIFICATE: (i)

I, Aaron J. Austin, Wisconsin Professional Land Surveyor, do hereby certify that the corner location on this record was determined by me and/or under my direct supervision and that this U.S. Public Land Survey Monument Record is correct and complete to the best of my knowledge and belief.

Dated this 18th day of February, 2022.

Aaron J. Austin
Aaron J. Austin, S-2922



Grant County Coordinates:
NAD 83 (2011)
Northing: 447,358.76
Easting: 869,249.00

HISTORY OF CORNER ESTABLISHMENT:

Original corner was set in 1832 by Lucius Lyon.
Laurence Schmit set a 3/4" Rebar and prepared a Survey Monument Record dated in January 1983.

DESCRIPTION OF CORNER EVIDENCE FOUND: (b) (f) (g) (h)

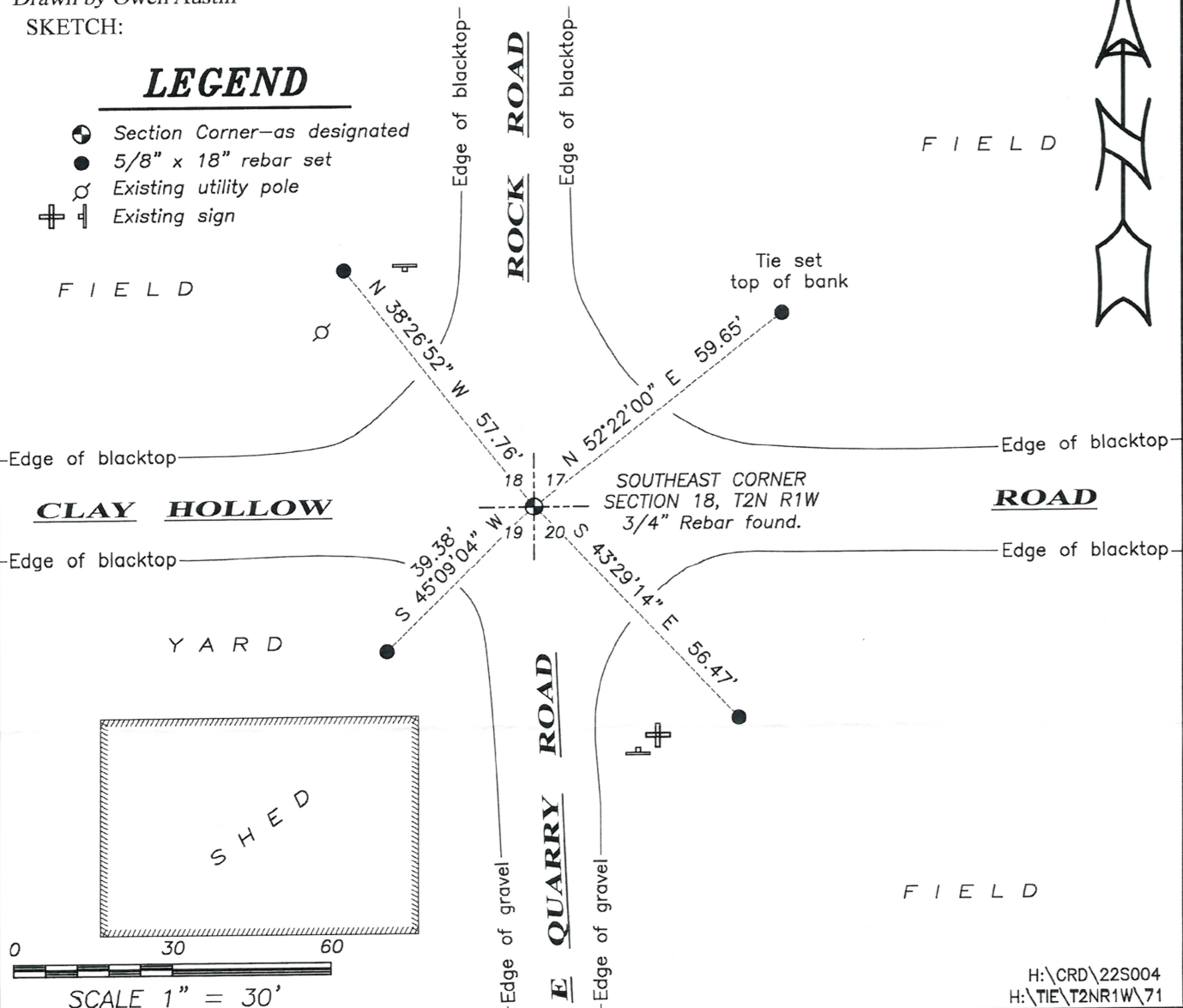
I found the 3/4" Rebar Schmit set. I set four witness corners after I verified the Monument's location with G.P.S. and E.D.M. methods

DESCRIPTION OF CORNER AND WITNESS MONUMENTS, references and accessories used to perpetuate the original or re-established location of this corner. (c) (d) (e)
Witnesses to corner location Owen Austin, Tanner Austin.
Drawn by Owen Austin

SKETCH:

LEGEND

- ⊙ Section Corner—as designated
- 5/8" x 18" rebar set
- ⊕ Existing utility pole
- ⊕ Existing sign



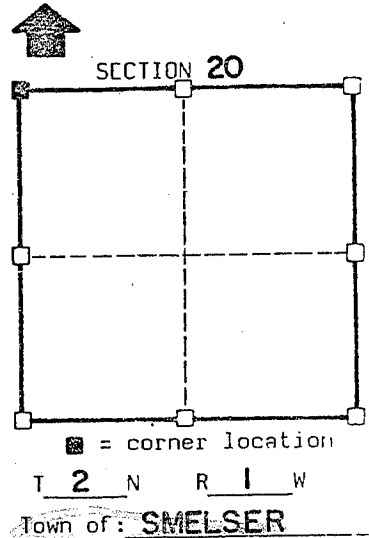
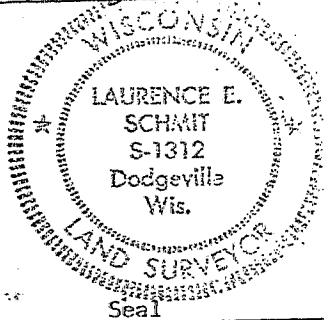
U.S. PUBLIC LAND SURVEY MONUMENT RECORD

STATE OF WISCONSIN)
 COUNTY OF GRANT) S.S.

CERTIFICATE

I, Laurence E. Schmit certify that the corner location shown on this record was determined by me or under my direction and control and that this U.S. Public Land Survey Monument Record is correct to the best of my knowledge and belief.

Laurence E. Schmit date Jan. 1983



History of original corner establishment: No written records available since original survey according to the Grant County abstract office

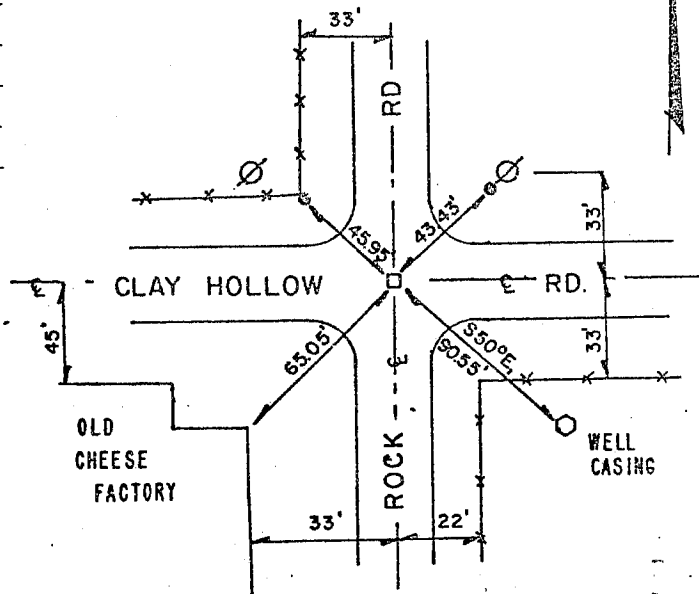
Description of corner evidence found: The corner was located at the intersection of the centerlines of Clay Hollow Road and Rock Road. The distance checked with R/W fences to the East and South. The distance from the corner to N-S fence at the N $\frac{1}{4}$ corner was exactly the same as the distance from the N $\frac{1}{4}$ corner to the NE corner

Description of corner and witness monuments, references and accessories used to perpetuate the original or re-established location of this corner:

Witnesses to corner location:

Bruce Bowden R.L.S.
James Olson R.L.S.

Sketch:



Legend

- NO. 5 REBAR SET
- NO. 6 REBAR SET
- x — FENCELINE
- POWER POLE

SURVEY CONTROL ORDER

Horizontal

Vertical

WISCONSIN COORDINATE SYSTEM

Corner	East(X)	North(Y)	Elevation(Z)	Zone
Control Sta. Name				