

U.S. PUBLIC LAND SURVEY MONUMENT RECORD - GRANT COUNTY, WI

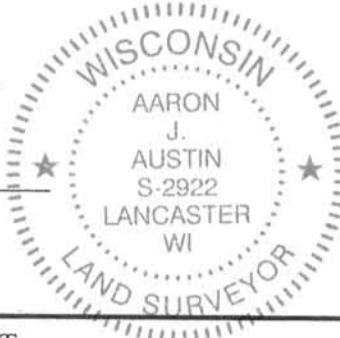
Section 21, Town 2 North Range 1 West, Town of Smelser

CERTIFICATE:

I, Aaron J. Austin, do hereby certify that the corner location on this record was determined by me and/or under my direct supervision and that this U.S. Public Land Survey Monument Record is correct and complete to the best of my knowledge and belief.

Dated this 10th day of July, 2014.

Aaron J. Austin
 Aaron J. Austin, S-2922



● = CORNER LOCATION

HISTORY OF CORNER ESTABLISHMENT:

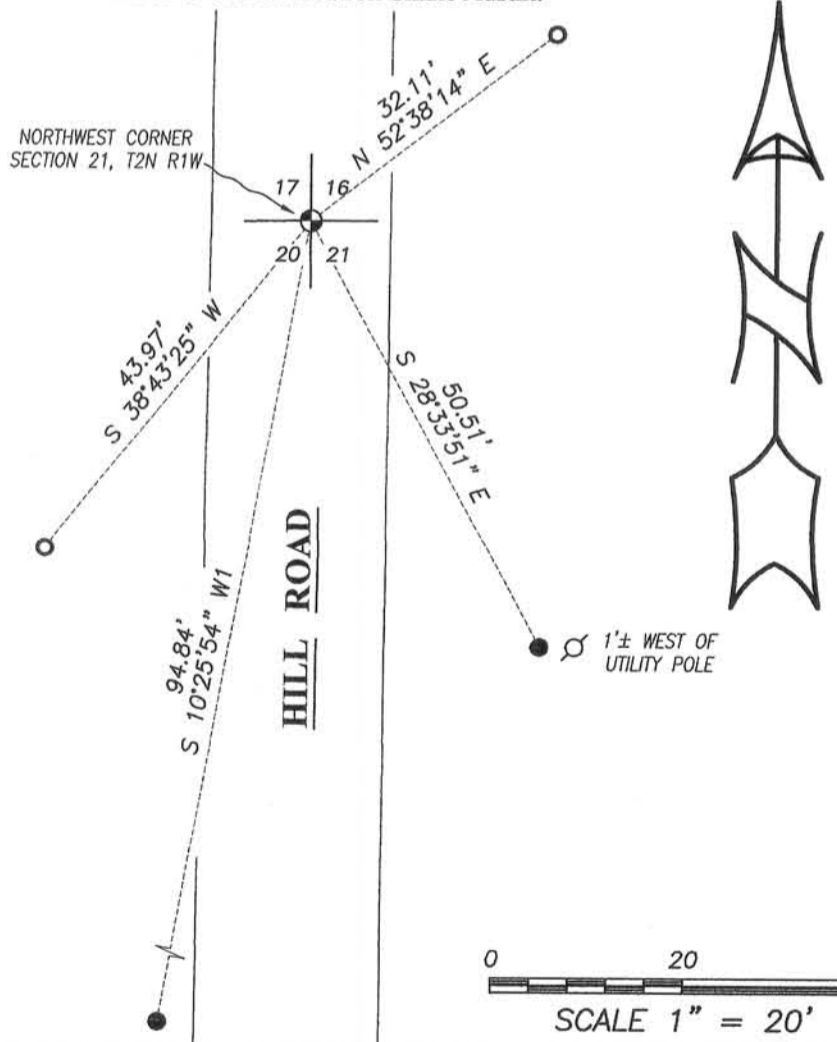
- 1832 Lucius Lyon set original corner.
- 1855 Overton tied to the corner on a Survey in Book B, Page 376.
- 1983 Laurence Schmit tied to the corner on a Survey in Book I, Page 3.
- 2003 Larry Austin tied to the corner on C.S.M. No. 998, 999, 1000, 1001, 1002, 1003 and 1005.
- 2005 Larry Austin tied to the corner on a Survey in Book 17, Page 31.
- 2008 Larry Austin tied to the corner on a Survey in Book 23, Page 79.

DESCRIPTION OF CORNER EVIDENCE FOUND:

Laurence Schmit prepared set a No. 6 rebar and 4 ties for this corner and prepared a U.S. Public Land Survey Monument Record. I found a Disturbed No. 6 rebar at this location and 1 tie missing. I reset a No. 8 rebar with a Grant County Aluminum Cap at Schmit's location based upon the found ties. I verified this location with E.D.M. and G.P.S. methods.

DESCRIPTION OF CORNER AND WITNESS MONUMENTS, references and accessories used to perpetuate the original or re-established location of this corner. Witnesses to corner location Shane Austin.

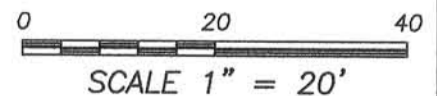
SKETCH:



Bearings referenced to the Grant County Coordinate System (2011 adjustment) which was determined by G.P.S. observation.

LEGEND

- ⊕ No. 8 x 24" rebar reset with Grant County Aluminum Cap
- Number 5 Rebar found
- Number 5 found disturbed reset at new location
- x-x-x- Approximate existing fence



4211 HWY 81 E, LANCASTER, WI 53813
 PHONE: 608-723-6363 FAX: 608-723-6702

JOB NO: 14s071
 G:\14s071
 H:\TIE\T2NR1W\69

FIELDBOOK: TDSR
 DRAWN BY: AJ AUSTIN
 CREW: SW AUSTIN

U.S. PUBLIC LAND SURVEY MONUMENT RECORD

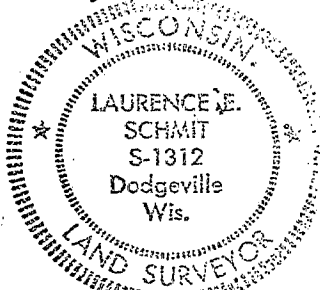
STATE OF WISCONSIN)
 COUNTY OF GRANT) S.S.

CERTIFICATE

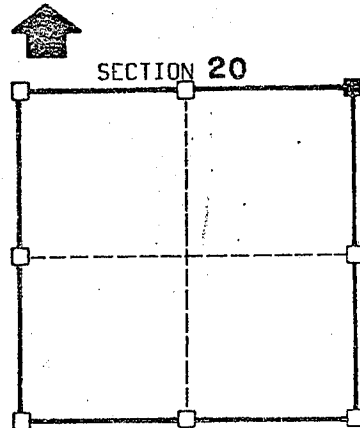
I, Laurence E. Schmit certify that the corner location shown on this record was determined by me or under my direction and control and that this U.S. Public Land Survey Monument Record is correct to the best of my knowledge and belief.

Laurence E. Schmit

date Jan. 1983



Seal



☐ = corner location

T 2 N R 1 W

Town of: SMELSER

History of original corner establishment: No written records available since the original survey according to the Grant County abstract office

Description of corner evidence found: The corner was located at the intersection of the centerline of Hill Road and E-W fence from the East. The distance to the N₂ corner of same section was exactly the same as the distance from the N₂ corner to the NW section corner.

Description of corner and witness monuments, references and accessories used to perpetuate the original or re-established location of this corner:

Witnesses to corner location:

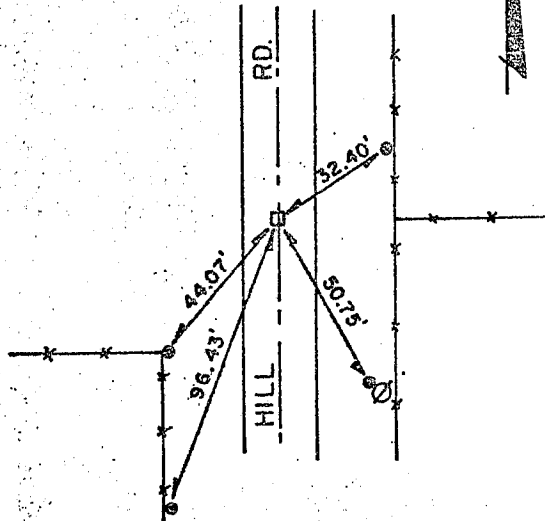
Bruce Bowden R.L.S.

James Olson R.L.S.

Sketch:

Legend

- ⊙ NO. 5 REBAR
- NO. 6 REBAR
- FENCELINE
- ⊕ POWER POLE



SURVEY CONTROL ORDER

Horizontal

Vertical

WISCONSIN COORDINATE SYSTEM

Corner	East(X)	North(Y)	Elevation(Z)	Zone
Control Sta. Name				

269