

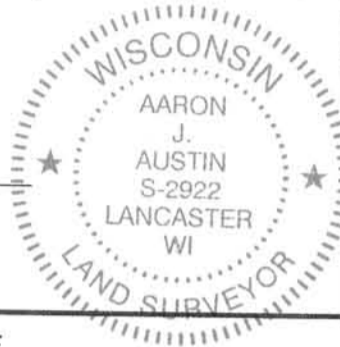
**U.S. PUBLIC LAND SURVEY MONUMENT RECORD - GRANT COUNTY, WI**  
 Section 21, Town 2 North Range 1 West, Town of Smelser

**CERTIFICATE:**

I, Aaron J. Austin, do hereby certify that the corner location on this record was determined by me and/or under my direct supervision and that this U.S. Public Land Survey Monument Record is correct and complete to the best of my knowledge and belief.

Dated this 10th day of July, 2014.

*Aaron J. Austin*  
 Aaron J. Austin, S-2922



● = CORNER LOCATION

HISTORY OF CORNER ESTABLISHMENT:

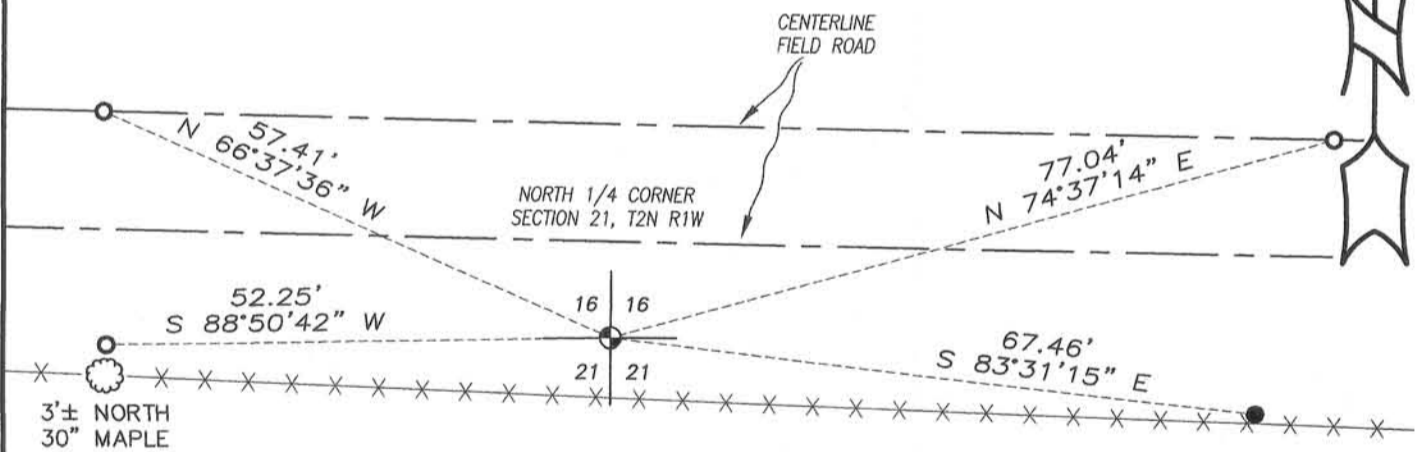
- 1832 Lucius Lyon set original corner.
- 1846 Wiltse tied to the corner on a Survey in Book B, Page 31.
- 1850 Stuntz tied to the corner on a Survey in Book B, Page 241.
- 1853 Overton tied to the corner on a Survey in Book B, Page 326.
- 1855 Overton tied to the corner on a Survey in Book B, Page 376.
- 2002 Larry Austin tied to the corner on a Survey filed in Book 11, Page 63.

DESCRIPTION OF CORNER EVIDENCE FOUND:

Larry Austin Set a No. 8 rebar with a Grant County Aluminum Cap and set 4 ties for this corner and prepared a U.S. Public Land Survey Monument Record. I found a Disturbed monument at this location and 3 ties set by Larry Austin. I reset the No. 8 rebar with a Grant County Aluminum Cap and set one additional tie. I verified this location with E.D.M. and G.P.S. methods.

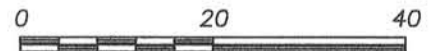
DESCRIPTION OF CORNER AND WITNESS MONUMENTS, references and accessories used to perpetuate the original or re-established location of this corner. Witnesses to corner location Shane Austin.

SKETCH:



**LEGEND**

- No. 8 x 30" rebar reset with Grant County Aluminum Cap
- Number 4 Rebar found with red plastic "TIE" cap
- Number 4 x 12" Rebar set with red plastic "TIE" cap
- × × Approximate existing fence



SCALE 1" = 20'

Bearings referenced to the Grant County Coordinate System (2011 adjustment) which was determined by G.P.S. observation.



**Austin Engineering LLC**  
 austinengineeringllc.com

4211 HWY 81 E, LANCASTER, WI 53813  
 PHONE: 608-723-6363 FAX: 608-723-6702

JOB NO: 14s071  
 G:\14s071  
 H:\TIE\T2NR1W\68A

FIELDBOOK: TDSR  
 DRAWN BY: AJ AUSTIN  
 CREW: SW AUSTIN

