

U.S. PUBLIC LAND SURVEY MONUMENT RECORD - GRANT COUNTY, WI

Section 13, Town 2 North Range 1 West, Town of Smelser (a)

NOTE: This form is intended and designed to fulfill all requirements of the Wisconsin Administrative Code Chapter A-E 7.08, U.S. Public Land Survey Monument Record (3) (a) (b) (c) (d) (e) (f) (g) (h) (i).

CERTIFICATE: (i)

I, Aaron J. Austin, Wisconsin Professional Land Surveyor, do hereby certify that the corner location on this record was determined by me and/or under my direct supervision and that this U.S. Public Land Survey Monument Record is correct and complete to the best of my knowledge and belief.

Dated this 22nd day of November, 2023.

Aaron J. Austin
Aaron J. Austin, S-2922



Grant County Coordinates:
NAD 83 (2011)
Northing: 447,471.31
Easting: 893,019.43

HISTORY OF CORNER ESTABLISHMENT:

Original corner was set in 1832 by Lucius Lyon.
Richard Talarczyk did not set a Monument and prepared a Survey Monument Record dated 9-17-1981.

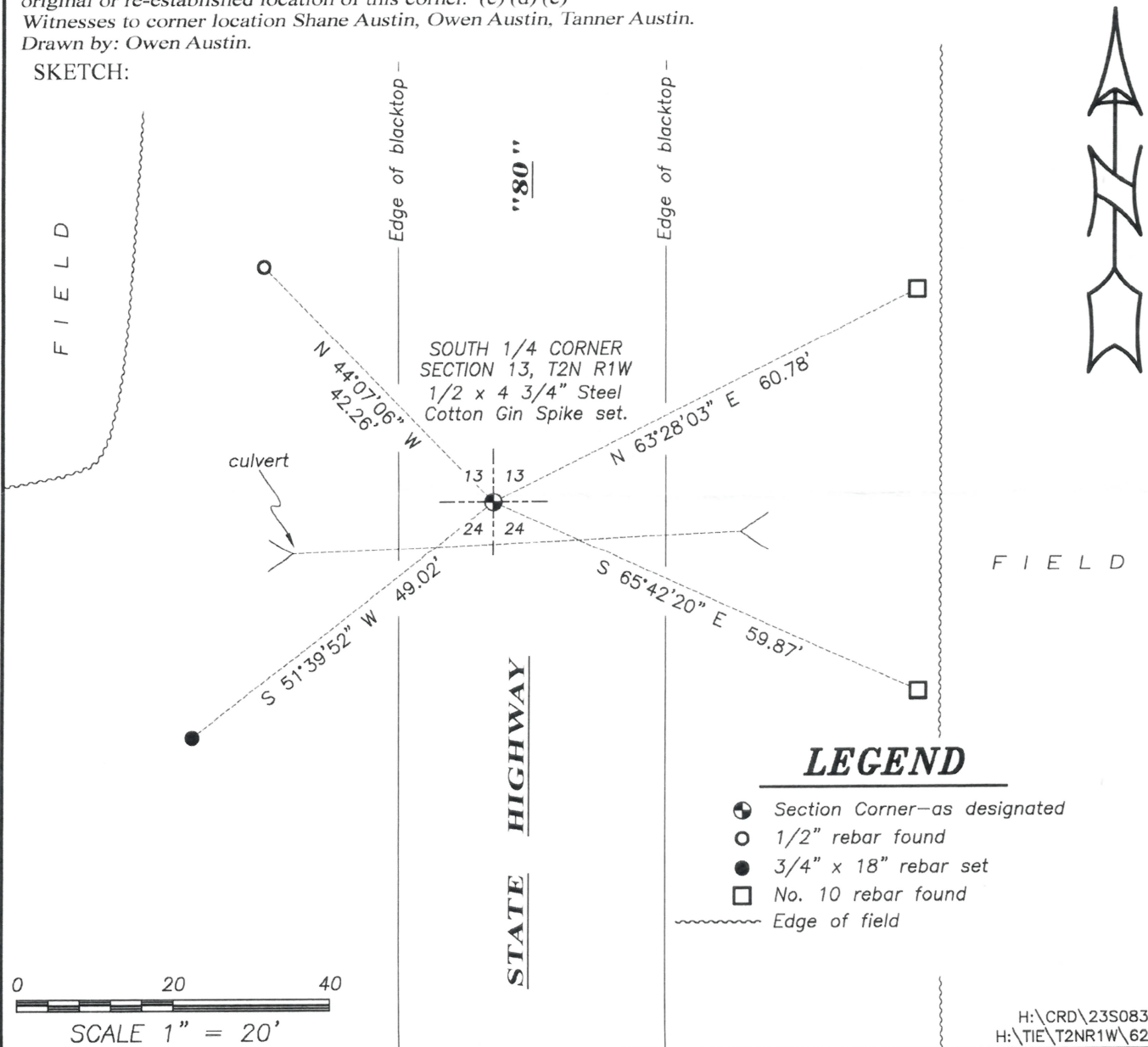
DESCRIPTION OF CORNER EVIDENCE FOUND: (b) (f) (g) (h)

I set a 1/2" x 4 3/4" Steel Cotton Gin Spike from the two existing witness corners. I established two additional witness corners after I verified the Corner's location with G.P.S. and E.D.M. methods.

DESCRIPTION OF CORNER AND WITNESS MONUMENTS: references and accessories used to perpetuate the original or re-established location of this corner. (c) (d) (e)

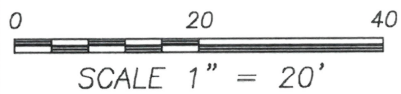
Witnesses to corner location Shane Austin, Owen Austin, Tanner Austin.
Drawn by: Owen Austin.

SKETCH:



LEGEND

- Section Corner—as designated
- 1/2" rebar found
- 3/4" x 18" rebar set
- No. 10 rebar found
- Edge of field



RECORD OF U.S. PUBLIC LAND SURVEY CONTROL STATION

QUARTER SECTION CORNER $\frac{13}{24} \frac{13}{24}$ TOWNSHIP 2 N, RANGE 1 W; GRANT COUNTY, WISCONSIN

GEODETIC SURVEY BY: _____
 STATE PLANE COORDINATES OF: _____
 NORTH _____
 EAST _____

ELEVATION OF STATION: _____ THETA ANGLE: _____

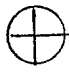


HORIZONTAL DATUM: WISCONSIN STATE PLANE COORDINATE SYSTEM, SOUTH ZONE

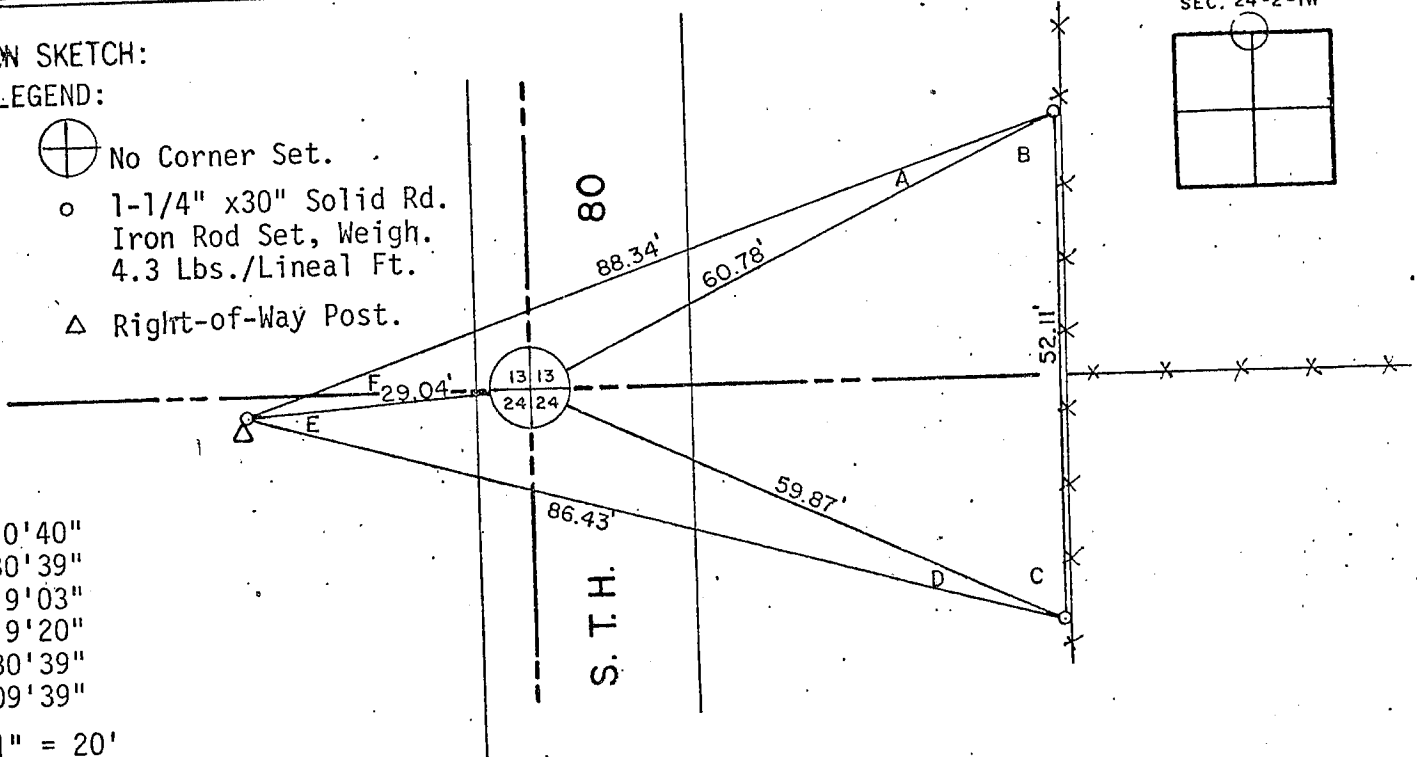
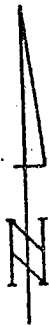
VERTICAL DATUM: MEAN SEA LEVEL, 1929 ADJUSTMENT

HORIZONTAL & VERTICAL CONTROL ACCURACY: SECOND ORDER

LOCATION SKETCH:

LEGEND:

-  No Corner Set.
-  1-1/4" x 30" Solid Rd. Iron Rod Set, Weigh. 4.3 Lbs./Lineal Ft.
-  Right-of-Way Post.



ANGLES:

- A 7°10'40"
- B 63°30'39"
- C 65°19'03"
- D 9°19'20"
- E 19°30'39"
- F 15°09'39"

SCALE: 1" = 20'

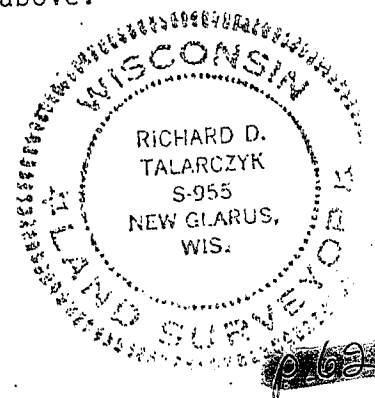
SURVEYOR'S AFFIDAVIT:

STATE OF WISCONSIN)
 GREEN COUNTY) SS

I HEREBY CERTIFY THAT I, Richard D. Talarczyk, have complied with the Wisconsin Statutes, Statutes of the United States, and the rules and regulations made by the Secretary of the Interior in the location of the corner shown above.

DATE OF SURVEY: 8-29-81 to 9-17-81

Richard D. Talarczyk
 Richard D. Talarczyk



SEP 24 1981