

U.S. PUBLIC LAND SURVEY MONUMENT RECORD

Section 14, Town 2 North Range 1 West, Town of Smelser, Grant County, Wisconsin

CERTIFICATE

I, Larry L. Austin, do hereby certify that the corner location on this record was determined by me and/or under my direct supervision and that this U.S. public land survey monument record is correct and complete to the best of my knowledge and belief.



● = CORNER LOCATION

Larry L. Austin
 Larry L. Austin, S-1903



HISTORY OF CORNER

Corner was originally set in 1832 by Lyon. In 1847 Stuntz tied to the corner with no mention of monument. No other record of the corner was found.

CORNER EVIDENCE FOUND

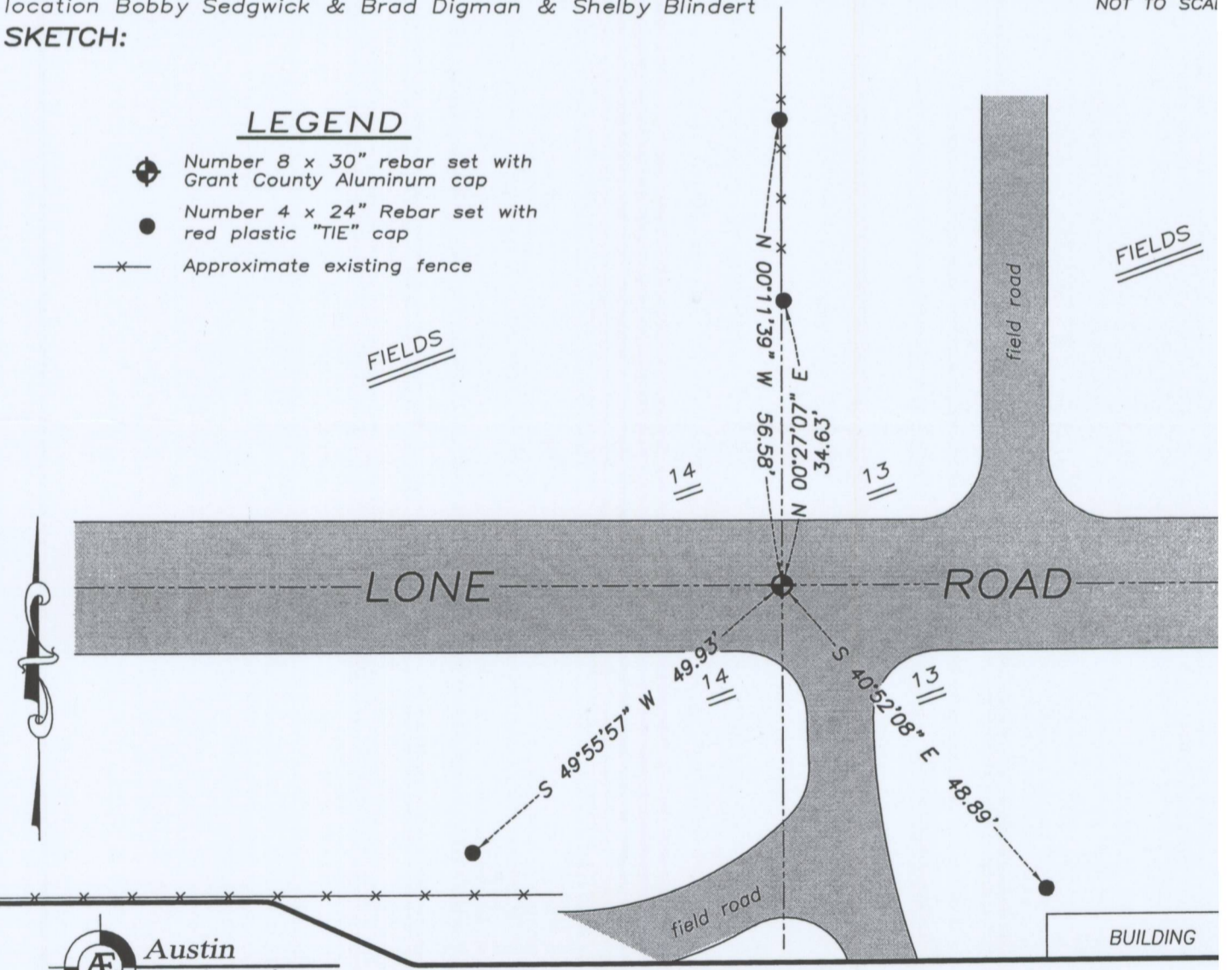
I set the corner at an occupied location and accepted it after an EDM & GPS traverse of the area.

DESCRIPTION OF CORNER AND WITNESS MONUMENTS, references and accessories used to perpetuate the original or re-established location of this corner. Witnesses to monument location Bobby Sedgwick & Brad Digman & Shelby Blindert
 NOT TO SCALE

SKETCH:

LEGEND

- ⊕ Number 8 x 30" rebar set with Grant County Aluminum cap
- Number 4 x 24" Rebar set with red plastic "TIE" cap
- x- Approximate existing fence



Austin Engineering LLC
 austinengineeringllc.com
 4211 HWY 81 E, LANCASTER, WI 53813
 PHONE: 608-723-6363 FAX: 608-723-6702

JOB NUMBER 09S176-STEINHART
 FIELDBOOK: TDSR, 2901
 G:\T2NR1W\T2NR1W
 H:\TIE\T2NR1W\59
 DRAWN BY: SW AUSTIN
 APPROVED: LL AUSTIN

59

FEB 18 2011