

# U.S. PUBLIC LAND SURVEY MONUMENT RECORD - GRANT COUNTY, WI

Section 17, Town 2 North Range 1 West, Town of Smelser (a)

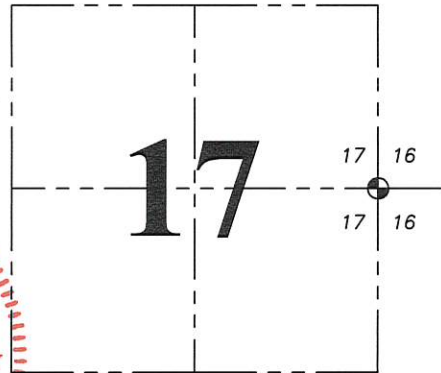
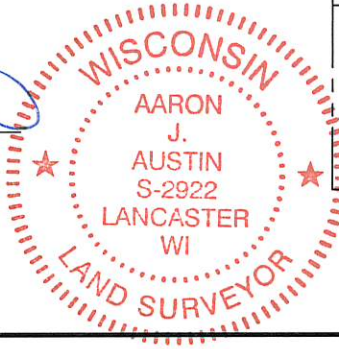
NOTE: This form is intended and designed to fulfill all requirements of the Wisconsin Administrative Code Chapter A-E 7.08, U.S. Public Land Survey Monument Record (3) (a) (b) (c) (d) (e) (f) (g) (h) (i).

**CERTIFICATE:** (i)

I, Aaron J. Austin, Wisconsin Professional Land Surveyor, do hereby certify that the corner location on this record was determined by me and/or under my direct supervision and that this U.S. Public Land Survey Monument Record is correct and complete to the best of my knowledge and belief.

Dated this 2nd day of May, 2017.

*Aaron J. Austin*  
Aaron J. Austin, S-2922



⊙ = CORNER LOCATION

HISTORY OF CORNER ESTABLISHMENT:

Original corner was set in 1832 by Lucius Lyon.  
Larry Austin found the corner and prepared a Survey Monument Record in 3/9/95.

DESCRIPTION OF CORNER EVIDENCE FOUND: (b) (f) (g) (h)

I found the section corner and two witness monuments. I set two new witness monuments after I verified the corners location with G.P.S. and E.D.M. methods

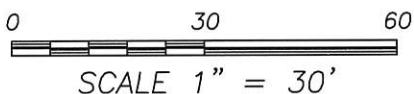
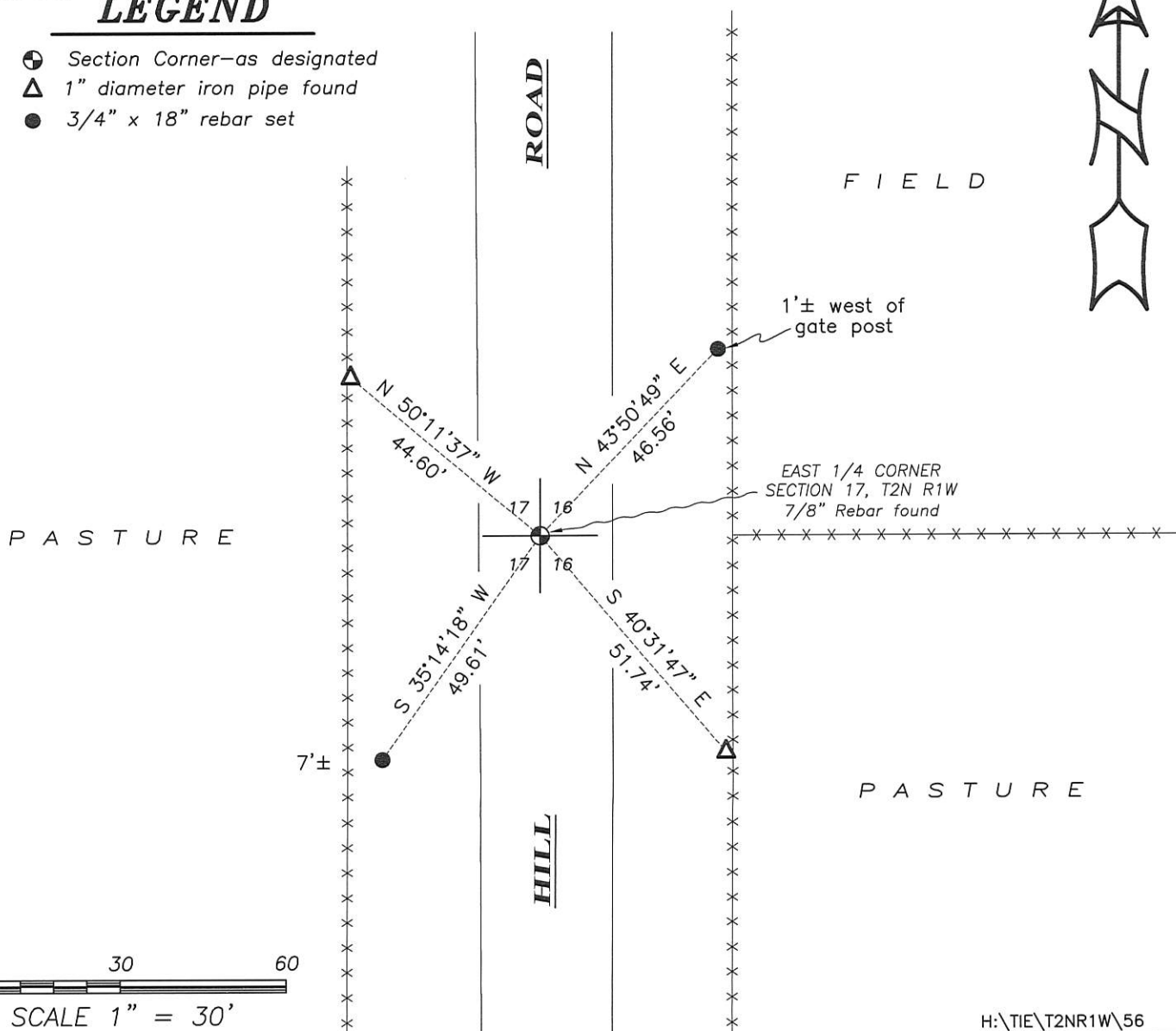
DESCRIPTION OF CORNER AND WITNESS MONUMENTS, references and accessories used to perpetuate the original or re-established location of this corner. (c) (d) (e)

Witnesses to corner location Shane Austin. Drawn by Owen Austin.

SKETCH:

## LEGEND

- ⊙ Section Corner—as designated
- △ 1" diameter iron pipe found
- 3/4" x 18" rebar set

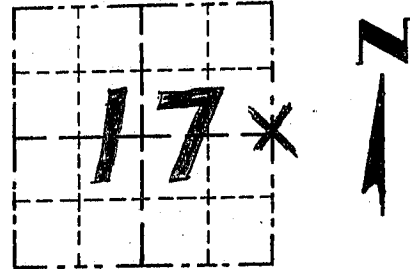


# GRANT COUNTY

## Survey Monument Record

TYPE OF MONUMENT 7/8" IRON BAR FOUND  
 STATE PLANE COORDINATES: N \_\_\_\_\_  
 E \_\_\_\_\_  
 ELEVATION — M.S.L. DATUM: \_\_\_\_\_  
 THETA ANGLE: \_\_\_\_\_  
 FIELD BOOK: 94-18  
 PAGE: 28

CORNER NO. 56  
 SECTION 17  
 TOWN 2 N  
 RANGE 1 W  
E 1/4 COR.



LOCATION  
 (Indicated by "X")

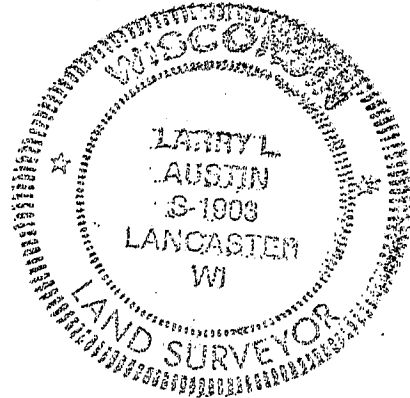
### BASIS FOR MONUMENT LOCATION

(Use reverse side if necessary)

Show info such as: History of corner, with reference to Vol. and pg., dates, surveyor; exact description of monument replaced; if location computed, by taped or EDM traverse; landowner, remarks, etc.

CORNER WAS ORIGINALLY SET IN 1832 BY LUCIUS LYONS; FOUND A 7/8" SOLID BAR AT OCCUPIED LOCATION; I ACCEPTED ITS LOCATION AFTER VERIFICATION BY EDM TRAVERSE.

SEAL:



CERTIFIED CORRECT

*Larry L. Austin*  
 Registered Land Surveyor

DATE: 3/9/95

### TIE SKETCH

Show at least three (3) ties and monument

#### LEGEND

- 7/8" IRON BAR FOUND 6" BELOW SURFACE = CORNER
- 1" IRON PIPE SET = TIES
- X — X — EXISTING FENCE

