

U.S. PUBLIC LAND SURVEY MONUMENT RECORD - GRANT COUNTY, WI

Section 18, Town 2 North Range 1 West, Town of Smelser (a)

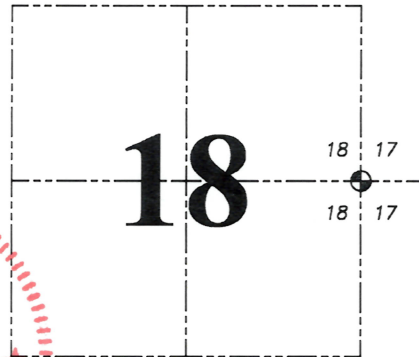
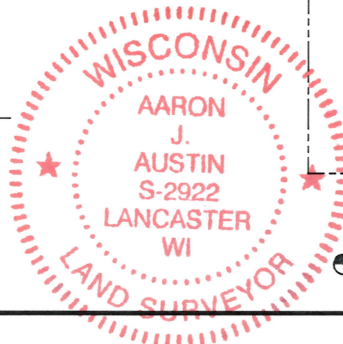
NOTE: This form is intended and designed to fulfill all requirements of the Wisconsin Administrative Code Chapter A-E 7.08, U.S. Public Land Survey Monument Record (3) (a) (b) (c) (d) (e) (f) (g) (h) (i).

CERTIFICATE: (i)

I, Aaron J. Austin, Wisconsin Professional Land Surveyor, do hereby certify that the corner location on this record was determined by me and/or under my direct supervision and that this U.S. Public Land Survey Monument Record is correct and complete to the best of my knowledge and belief.

Dated this 10th day of April, 2024.

Aaron J. Austin
Aaron J. Austin, S-2922



Grant County Coordinates:
NAD 83 (2011)
Northing: 450,003.92
Easting: 869,230.46

⊕ = CORNER LOCATION

HISTORY OF CORNER ESTABLISHMENT:

Original corner was set in 1832 by Lucius Lyon.
Larry Austin set a 3/4" Rebar and prepared a Survey Monument Record dated 3-9-1995.

DESCRIPTION OF CORNER EVIDENCE FOUND: (b) (f) (g) (h)

I found a disturbed 3/4" Rebar. I reset a 3/4" x 18" Rebar from the distances on C.S.M. #1199 from the West 1/4 and the Southeast corner of Section 18. I found one witness corner and set three witness corners after I verified the Monument's location with G.P.S. and E.D.M. methods.

DESCRIPTION OF CORNER AND WITNESS MONUMENTS, references and accessories used to perpetuate the original or re-established location of this corner. (c) (d) (e)

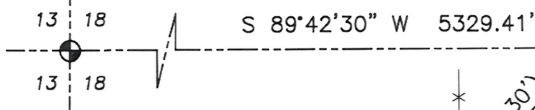
Witnesses to corner location Owen Austin, Tanner Austin.
Drawn by: Owen Austin.

SKETCH:

LEGEND

- ⊕ Section Corner—as designated
- △ 1" diameter iron pipe found
- 3/4" x 18" rebar set
- x-x-x- Existing fence
- () Recorded as

WEST 1/4 CORNER
SECTION 18, T2N R1W
Aluminum Capped
Rebar found.

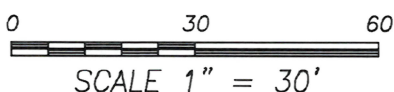


EAST 1/4 CORNER
SECTION 18, T2N R1W
3/4" x 18" Rebar set.

PASTURE

PASTURE

SOUTHEAST CORNER
SECTION 18, T2N R1W
3/4" Rebar found.

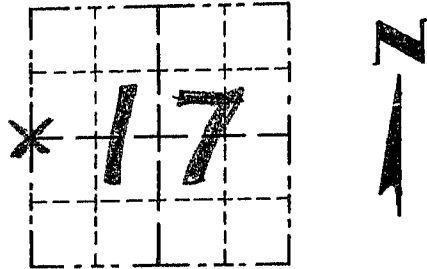


GRANT COUNTY

Survey Monument Record

TYPE OF MONUMENT 3/4" IRON BAR
 STATE PLANE COORDINATES: N _____
 E _____
 ELEVATION — M.S.L. DATUM: _____
 THETA ANGLE: _____
 FIELD BOOK: 94-18
 PAGE 27

CORNER NO. 55
 SECTION 17
 TOWN 2N
 RANGE 1W
W 1/4 COR



LOCATION
 (Indicated by "X")

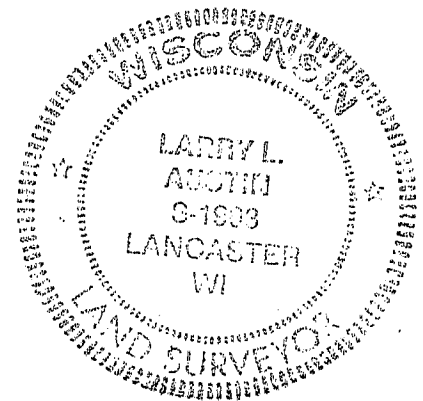
BASIS FOR MONUMENT LOCATION

(Use reverse side if necessary)

Show info such as: History of corner, with reference to Vol. and pg., dates, surveyor; exact description of monument replaced; if location computed, by taped or EDM traverse; landowner, remarks, etc.

SEAL:

NO RECORD FOUND OF CORNER SINCE ORIGINAL 1832 SURVEY BY LUCIUS LYON. CORNER WAS REESTABLISHED BASED ON OCCUPATIONAL EVIDENCE AND VERIFIED BY EDM TRAVERSE OF THE AREA.



CERTIFIED CORRECT

Larry L. Austin
 Registered Land Surveyor

DATE: 3/9/95

TIE SKETCH

Show at least three (3) ties and monument

