

U.S. PUBLIC LAND SURVEY MONUMENT RECORD

Section 18, Town 2 North Range 1 West, Town of Smelser, Grant County, Wisconsin

CERTIFICATE

I, Larry L. Austin, do hereby certify that the corner location on this record was determined by me and/or under my direct supervision and that this U.S. public land survey monument record is correct and complete to the best of my knowledge and belief.



● = CORNER LOCATION

Larry L. Austin
 Larry L. Austin, S-1903



HISTORY OF CORNER

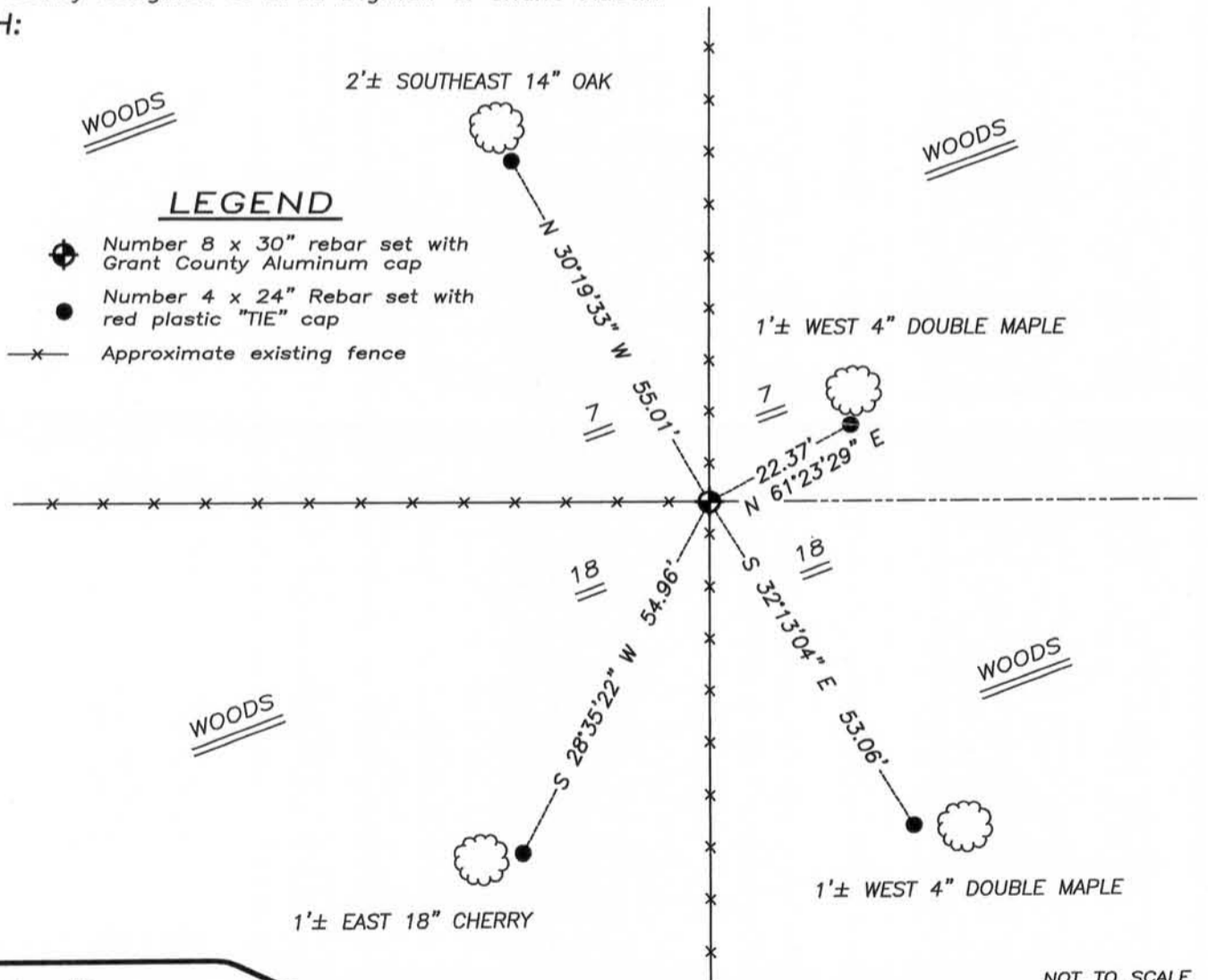
Corner was originally set in 1832 by Lyon. Many various surveyors have tied to the corner over the years. No other record of the corner was found.

CORNER EVIDENCE FOUND

I set a County Monument at a found spike at an occupied location. Verified this location using EDM & GPS methods.

DESCRIPTION OF CORNER AND WITNESS MONUMENTS, references and accessories used to perpetuate the original or re-established location of this corner. Witnesses to monument location Bobby Sedgwick & Brad Digman & Shane Austin

SKETCH:



NOT TO SCALE



Austin Engineering LLC

4211 HWY 81 E, LANCASTER, WI 53813
 PHONE 608-723-6363 FAX 608-723-6702

JOB NUMBER 05S271
 FIELDBOOK: TDSR, 2812
 G:\T2NR1W\T2NR1W
 H:\TIE\T2NR1W\52

DRAWN BY: SW AUSTIN
 APPROVED: LL AUSTIN

52

FEB 23 2011