

U.S. PUBLIC LAND SURVEY MONUMENT RECORD - GRANT COUNTY, WI

Section 8, Town 2 North Range 1 West, Town of Smelser (a)

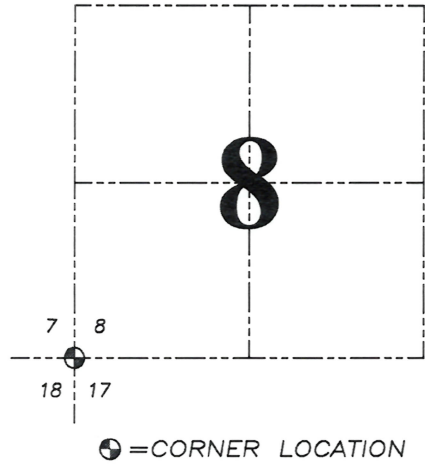
NOTE: This form is intended and designed to fulfill all requirements of the Wisconsin Administrative Code Chapter A-E 7.08, U.S. Public Land Survey Monument Record (3) (a) (b) (c) (d) (e) (f) (g) (h) (i).

CERTIFICATE: (i)

I, Aaron J. Austin, Wisconsin Professional Land Surveyor, do hereby certify that the corner location on this record was determined by me and/or under my direct supervision and that this U.S. Public Land Survey Monument Record is correct and complete to the best of my knowledge and belief.

Dated this 30th day of August, 2024.

Aaron J. Austin
Aaron J. Austin, S-2922



Grant County Coordinates:
NAD 83 (2011)
Northing: 452,641.43
Easting: 869,208.35

HISTORY OF CORNER ESTABLISHMENT:

Original corner was set in 1832 by Lucius Lyon.
Larry Austin set a Grant County Aluminum Monument and prepared a Survey Monument Record dated 3-9-1995.

DESCRIPTION OF CORNER EVIDENCE FOUND: (b) (f) (g) (h)

I found the Aluminum Monument Larry set. I set four witness corners after I verified the Monument's location with G.P.S. and E.D.M. methods.

DESCRIPTION OF CORNER AND WITNESS MONUMENTS, references and accessories used to perpetuate the original or re-established location of this corner. (c) (d) (e)

Witnesses to corner location Owen Austin, Tanner Austin.
Drawn by: Owen Austin.

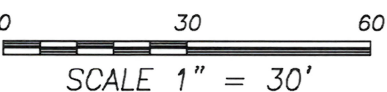
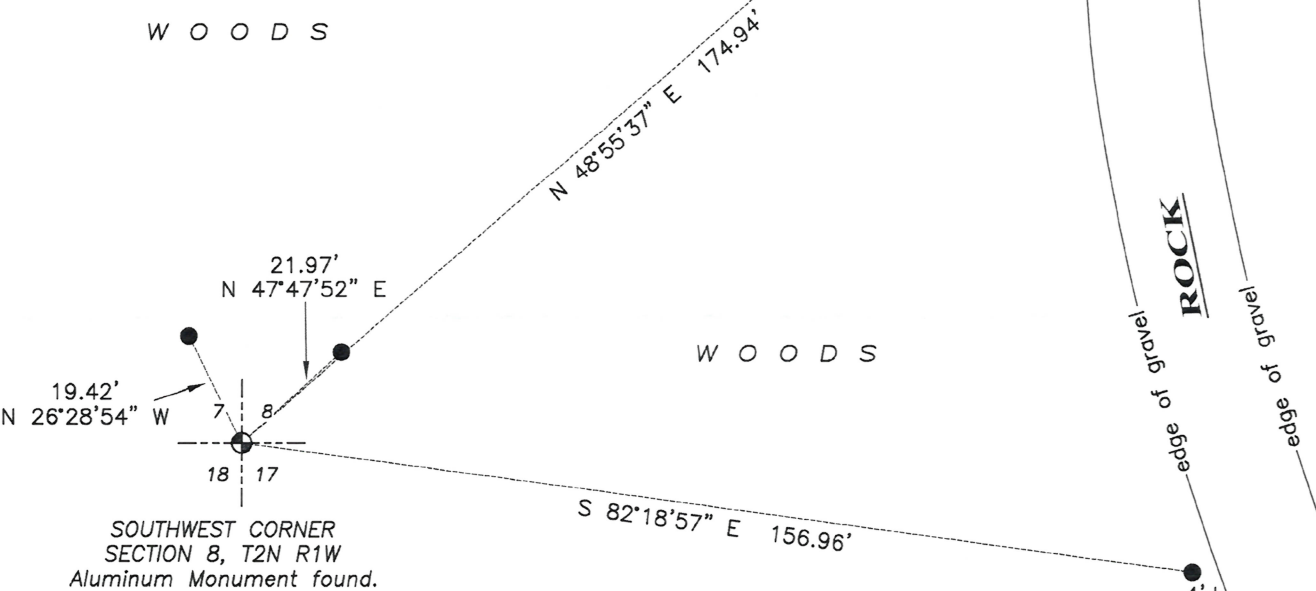
SKETCH:

LEGEND

- ⊕ Section Corner—as designated
- 3/4" x 18" rebar set



WOODS



GRANT COUNTY

Survey Monument Record

TYPE OF MONUMENT COUNTY MONUMENT

STATE PLANE COORDINATES: N _____
E _____

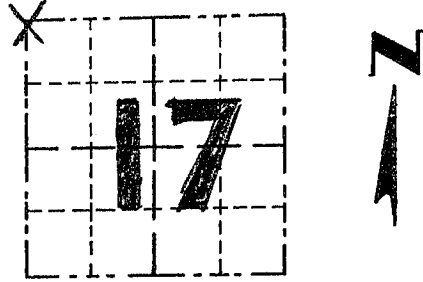
ELEVATION — M.S.L. DATUM: _____

THETA ANGLE: _____

FIELD BOOK: 94-18

PAGE 27

CORNER NO. 51
SECTION 17
TOWN 2 N
RANGE 1 W
NW COR.



LOCATION
(Indicated by "X")

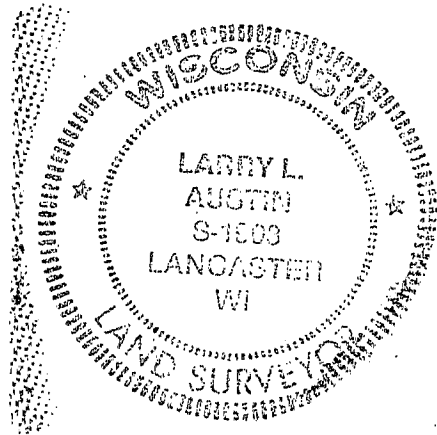
BASIS FOR MONUMENT LOCATION

(Use reverse side if necessary)

Show info such as: History of corner, with reference to Vol. and pg., dates, surveyor; exact description of monument replaced; if location computed, by taped or EDM traverse; landowner, remarks, etc.

SEAL:

CORNER ORIGINALLY SET IN 1832 BY LUCIUS LYON; NO RECORD FOUND OF CORNER SINCE ORIGINAL SURVEYOR; I SET THE CORNER ON LINE WITH FOUND FENCE REMNANTS & 10 CHAINS E. OF THE NW CORNER OF THE NE¹/₄, NE¹/₄, NE¹/₄ OF SEC. 18; THIS LOCATION FITS WELL WITH OTHER CORNERS IN THE AREA; VERIFIED BY EDM TRAVERSE



CERTIFIED CORRECT

Larry L. Austin
Registered Land Surveyor

DATE: 3/9/95

TIE SKETCH

Show at least three (3) ties and monument

LEGEND

- ⊕ GRANT COUNTY ALUMINUM MONUMENT SET = CORNER
- 1" IRON PIPE SET = TIE
- 3/4" IRON BAR SET = TIE
- ⊗ 26±" DIA TREE W/ WIRE THROUGH CENTER
- ×× EXISTING FENCE

