

21049

# U.S. PUBLIC LAND SURVEY MONUMENT RECORD - GRANT COUNTY, WI

Section 9, Town 2 North Range 1 West, Town of Smelser (a)

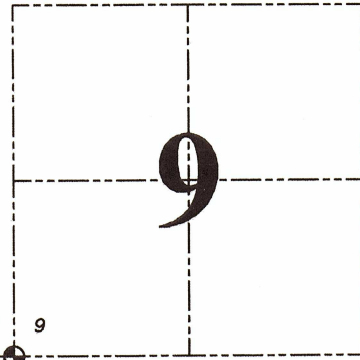
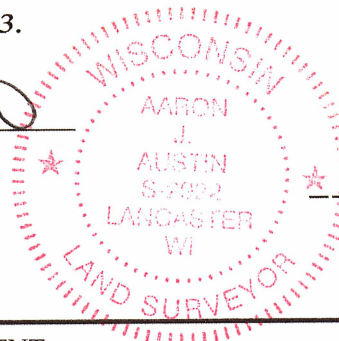
NOTE: This form is intended and designed to fulfill all requirements of the Wisconsin Administrative Code Chapter A-E 7.08, U.S. Public Land Survey Monument Record (3) (a) (b) (c) (d) (e) (f) (g) (h) (i).

**CERTIFICATE:** (i)

I, Aaron J. Austin, Wisconsin Professional Land Surveyor, do hereby certify that the corner location on this record was determined by me and/or under my direct supervision and that this U.S. Public Land Survey Monument Record is correct and complete to the best of my knowledge and belief.

Dated this 2nd day of May, 2023.

*Aaron J. Austin*  
Aaron J. Austin, S-2922



⊕ = CORNER LOCATION

Grant County Coordinates:  
NAD 83 (2011)  
Northing: 452,711.99  
Easting: 874,489.10

**HISTORY OF CORNER ESTABLISHMENT:**

Original corner was set in 1832 by Lucius Lyon.  
Bruce Bowden set a 1" Rebar and prepared a Survey Monument Record dated 6-7-1987.

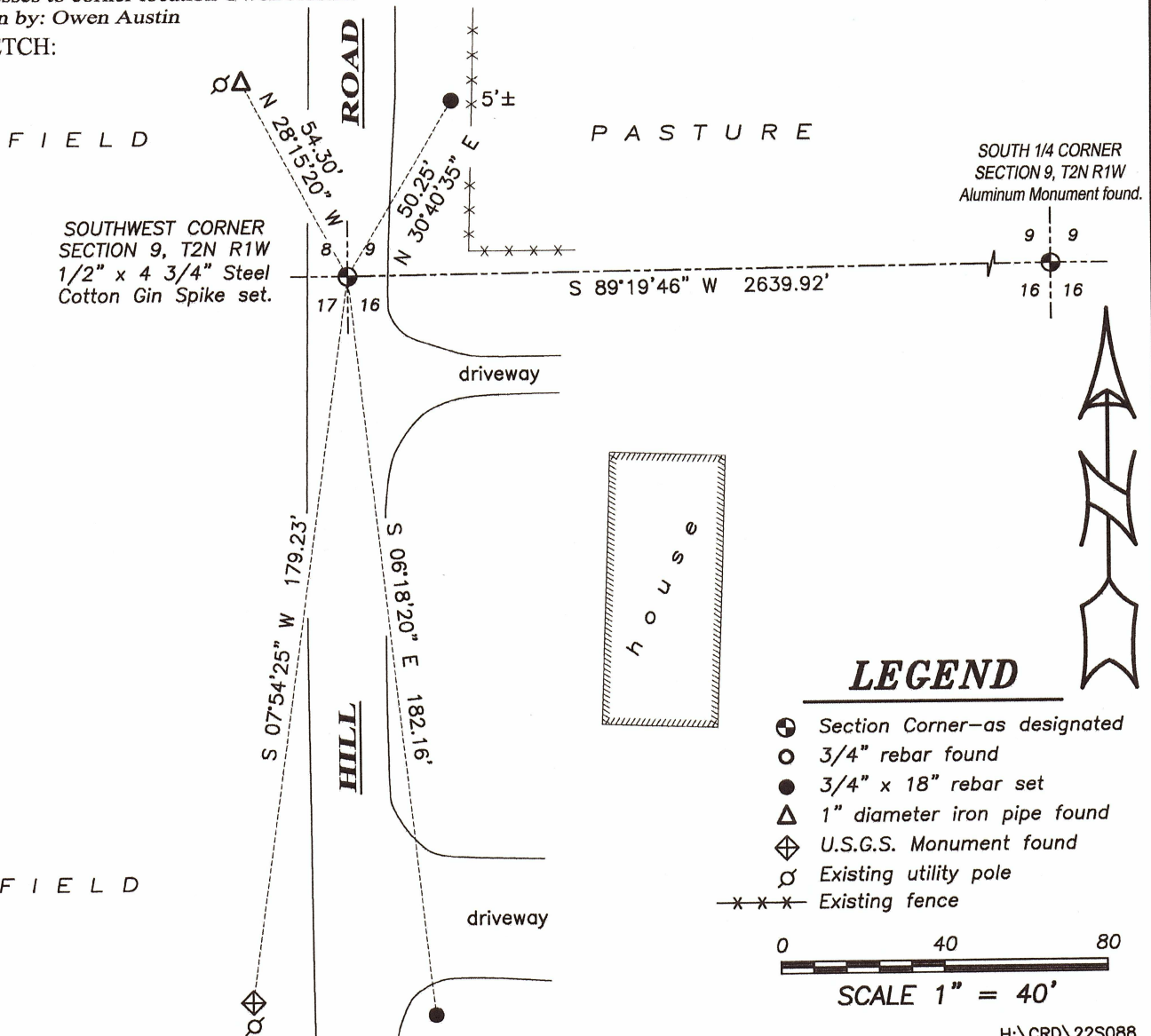
**DESCRIPTION OF CORNER EVIDENCE FOUND:** (b) (f) (g) (h)

I set a 1/2" x 4 3/4" Steel Cotton Gin Spike. I retraced Bowden's location based upon one found one witness corner and the recorded dimension to the South 1/4 corner of Section 9 from a previous survey by Larry Austin dated 2-13-2002 and filed in Book 11, Page 63. I established three additional witness corners after I verified the Monument's location with G.P.S. and E.D.M. methods.

**DESCRIPTION OF CORNER AND WITNESS MONUMENTS,** references and accessories used to perpetuate the original or re-established location of this corner. (c) (d) (e)

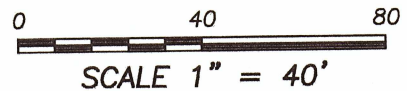
Witnesses to corner location Owen Austin.  
Drawn by: Owen Austin

SKETCH:



**LEGEND**

- ⊕ Section Corner—as designated
- 3/4" rebar found
- 3/4" x 18" rebar set
- △ 1" diameter iron pipe found
- ⊕ U.S.G.S. Monument found
- ⊕ Existing utility pole
- x-x-x- Existing fence



H:\CRD\22S088  
H:\TIE\T2NR1W\49

# U. S. PUBLIC LAND SURVEY MONUMENT RECORD

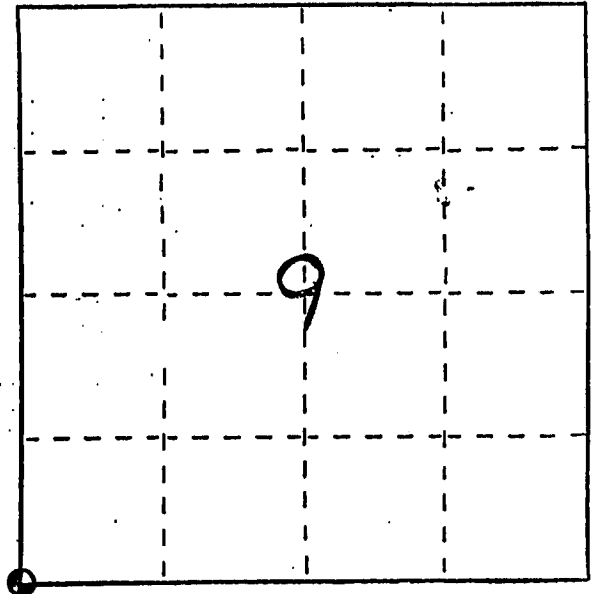
## INSTRUCTIONS:

This record shall show the location of the corner and shall include all of the following nine elements (a through i).

(a) Identify the corner by reference to the U.S. public land survey system.

⊙ = Corner monument restored.

SOUTHWEST CORNER OF SECTION 9, TOWN 2 NORTH, RANGE 1 WEST, SMELSER TOWNSHIP, GRANT COUNTY, WI.

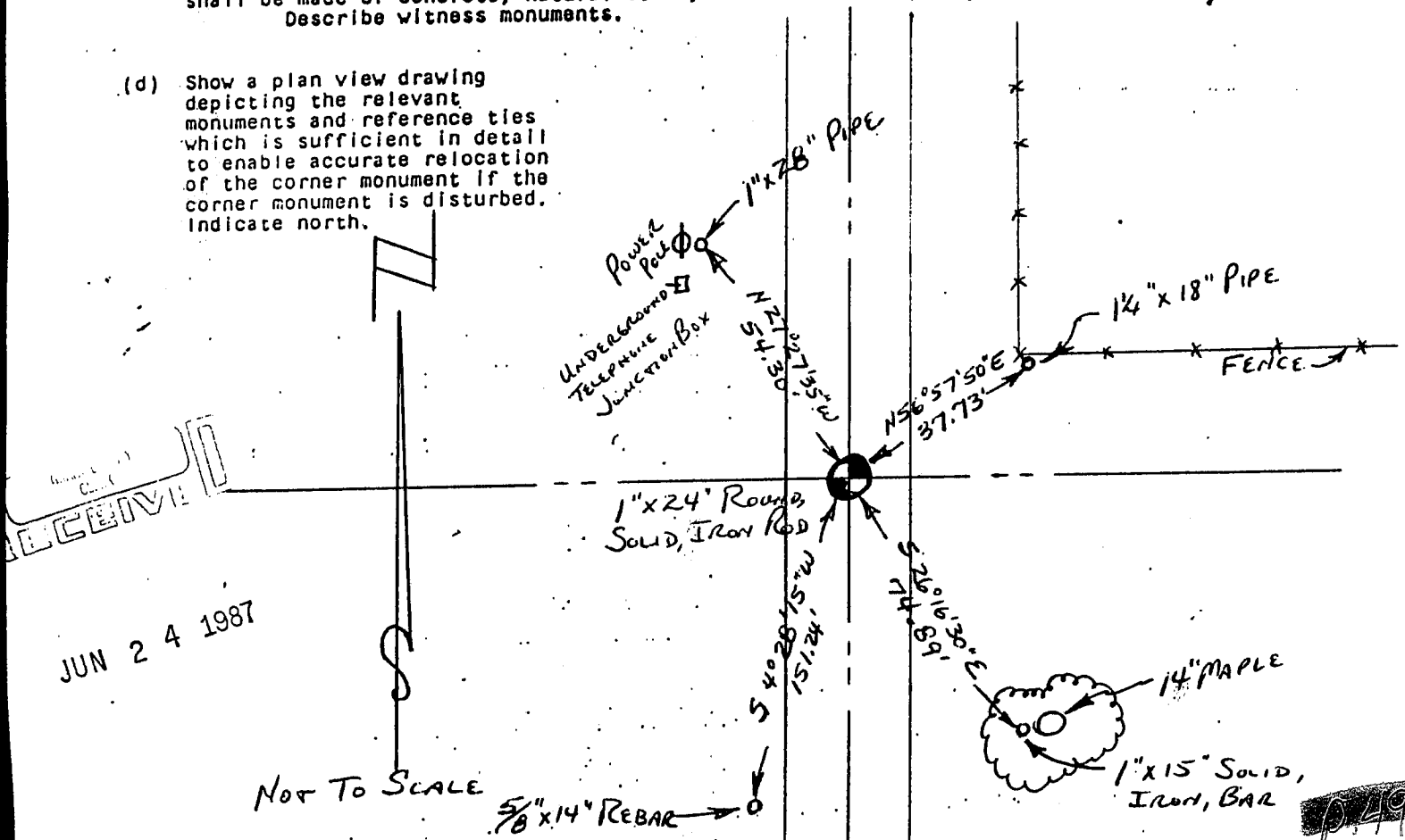


(b) Describe any record evidence, monument evidence, occupational evidence, testimonial evidence or any other material evidence you considered, and whether the monument was found or placed.

MONUMENT SET FROM EXISTING PHYSICAL EVIDENCE AND PROPORTIONATE MEASUREMENTS FROM AN EDM TRAVERSE OF THE AREA. NO RECORD SINCE THE ORIGINAL GOVERNMENT SURVEYS.

(c) In the plan view drawing below, provide reference ties to at least 4 witness monuments, or, if the location is within a municipality, to at least 2 witness monuments. (Witness monuments shall be made of concrete, natural stone, iron or other equally durable material.) Describe witness monuments.

(d) Show a plan view drawing depicting the relevant monuments and reference ties which is sufficient in detail to enable accurate relocation of the corner monument if the corner monument is disturbed. Indicate north.



JUN 24 1987

NOT TO SCALE

49

(e) Describe any material discrepancy between the location of the corner as restored or reestablished and the location of that corner as previously restored or reestablished by distance and direction. Show the discrepancy on the plan view drawing under (d), above. Show the distances between the corner as previously restored or reestablished and (1) the corner as restored or reestablished, and (2) to at least 2 of the witness monuments shown on the drawing in (d), above.

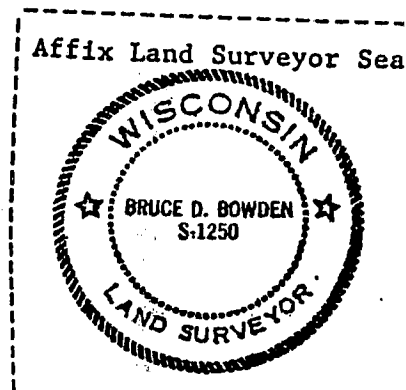
NONE.

(f) Was the corner restored through acceptance of (1) an obliterated evidence location, or, (2) a found perpetuated location?

(1) AN OBLITERATED EVIDENCE LOCATION

(g&h) Was the corner reestablished through lost corner proportionate methods? If so, show the method, including the directions and distances to other public land survey corners used as evidence or used for proportioning in determining the corner location?

No.



(i) I, Bruce D. Bowden  
(type or print name) certify that the corner location shown on this record was determined by me or under my direction and control and that this U.S. Public Land Survey Monument Record is correct and complete to the best of my knowledge and belief.

Bruce D. Bowden Signature  
June 7, 1987 Date