

# U.S. PUBLIC LAND SURVEY MONUMENT RECORD - GRANT COUNTY, WI

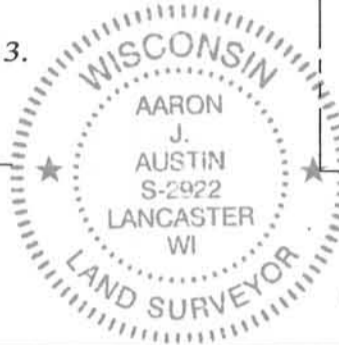
Section 12, Town 2 North Range 1 West, Town of Smelser

**CERTIFICATE:**

I, Aaron J. Austin, do hereby certify that the corner location on this record was determined by me and/or under my direct supervision and that this U.S. Public Land Survey Monument Record is correct and complete to the best of my knowledge and belief.

Dated this 9th day of December, 2013.

*Aaron J. Austin*  
 Aaron J. Austin, S-2922



● = CORNER LOCATION

HISTORY OF CORNER ESTABLISHMENT:

- In 1832 Corner was originally set by Lucius Lyon.
- In 1846 Wiltse shown the corner on a Survey filed in Book B, Page 33.
- In 1852 Everett shown the corner on a Survey filed in Book B, Page 306.
- 1973 Richard Talarczyk set an Aluminum Monument for this corner and prepared a U.S. Public Land Survey record.
- In 1982 the corner was shown on R/W Project 5235-02-21, 2011,
- In 1999 Stan King shown the corner on C.S.M. No. 537.
- In 2008 Larry Austin shown the corner on a Survey filed in Book 23, Page 67
- In 2011 I shown the corner on a Survey filed in Book 30, Page 68.

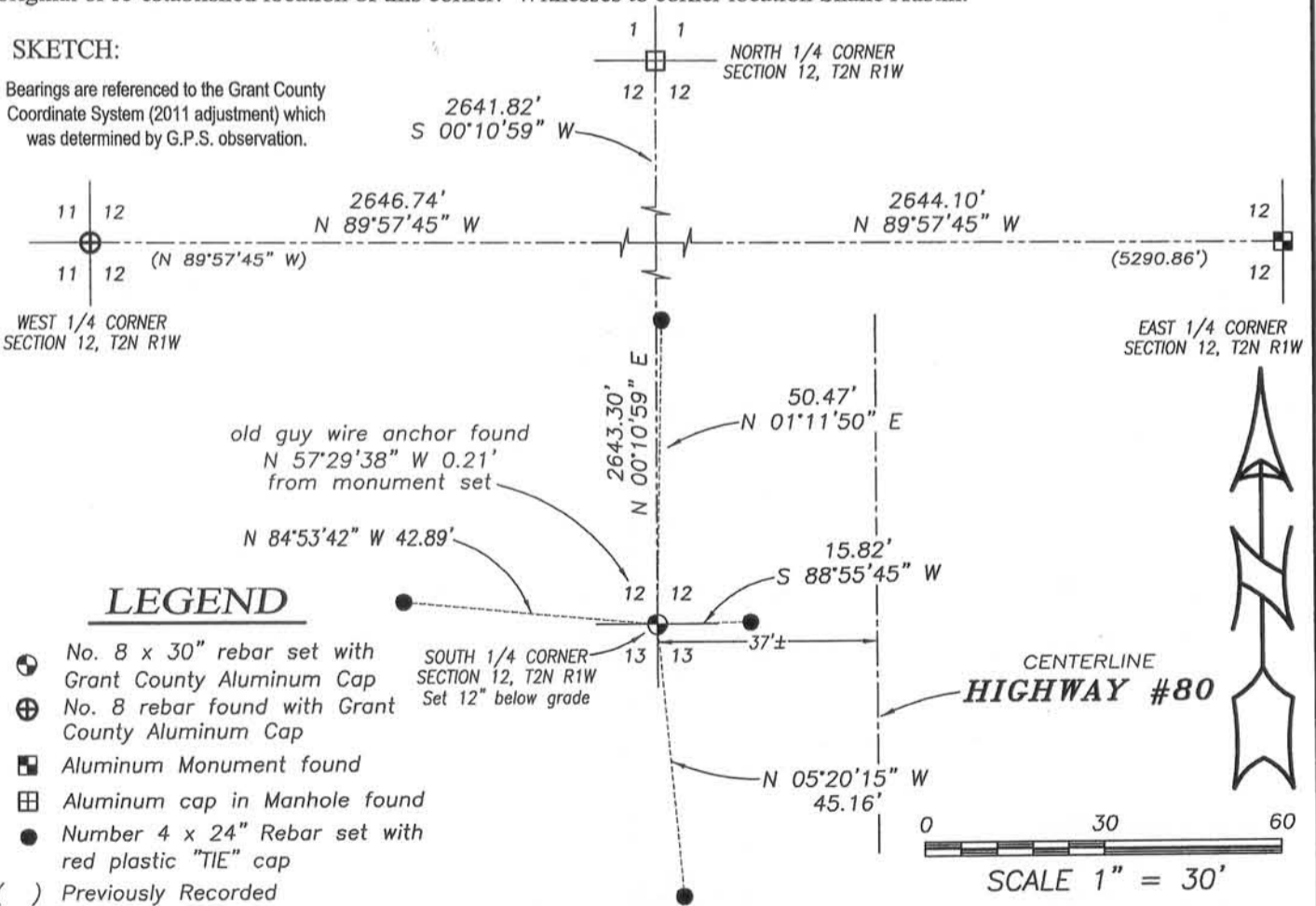
DESCRIPTION OF CORNER EVIDENCE FOUND:

I did not recover the monument or ties set by Talarczyk. I retraced this location based upon measurements taken to the East 1/4 corner and West 1/4 corner of Section 12 on a survey filed in Book 30, Page 68. This location was verified by G.P.S. methods.

DESCRIPTION OF CORNER AND WITNESS MONUMENTS, references and accessories used to perpetuate the original or re-established location of this corner. Witnesses to corner location Shane Austin.

**SKETCH:**

Bearings are referenced to the Grant County Coordinate System (2011 adjustment) which was determined by G.P.S. observation.



**LEGEND**

- ⊕ No. 8 x 30" rebar set with Grant County Aluminum Cap
- ⊕ No. 8 rebar found with Grant County Aluminum Cap
- ⊠ Aluminum Monument found
- ⊠ Aluminum cap in Manhole found
- Number 4 x 24" Rebar set with red plastic "TIE" cap
- ( ) Previously Recorded



4211 HWY 81 E, LANCASTER, WI 53813  
 PHONE: 608-723-6363 FAX: 608-723-6702

JOB NO: 13s192  
 G:\13s192  
 H:\TIE\T2NR1W\42

FIELDBOOK: TDSR  
 DRAWN BY: AJ AUSTIN  
 CREW: SW AUSTIN

RECORD OF U.S. PUBLIC LAND SURVEY CONTROL STATION

QUARTER SECTION CORNER  $\frac{12|12}{13|13}$  TOWNSHIP 2 N, RANGE 1 W 8, GRANT COUNTY, WISCONSIN

GEODETTIC SURVEY BY: \_\_\_\_\_

STATE PLANE COORDINATES OF: \_\_\_\_\_  
 NORTH \_\_\_\_\_  
 EAST \_\_\_\_\_

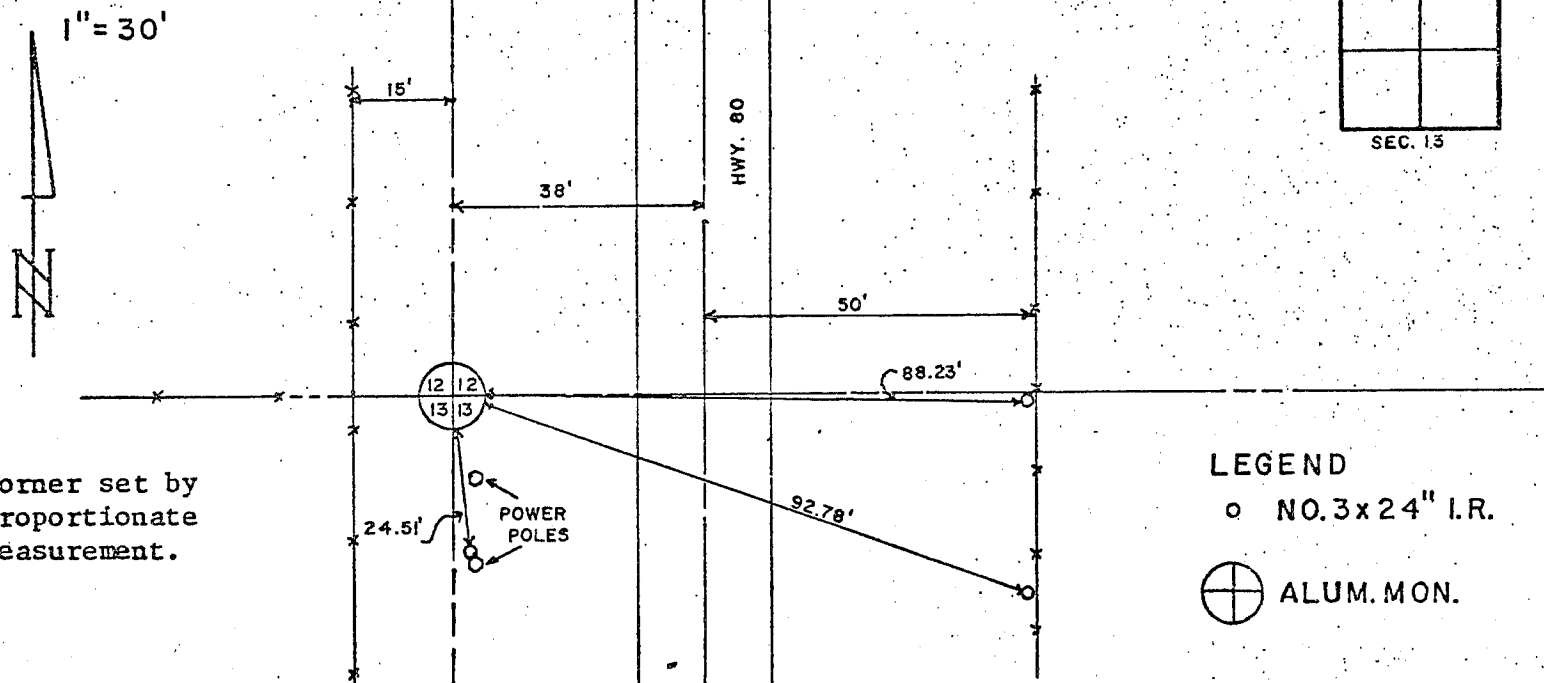
ELEVATION OF STATION: \_\_\_\_\_ THETA ANGLE: \_\_\_\_\_

HORIZONTAL DATUM: WISCONSIN STATE PLANE COORDINATE SYSTEM, SOUTH ZONE

VERTICAL DATUM: MEAN SEA LEVEL, 1929 ADJUSTMENT

HORIZONTAL & VERTICAL CONTROL ACCURACY: SECOND ORDER

LOCATION SKETCH:



Corner set by proportionate measurement.

LEGEND

○ NO. 3x24" I.R.

⊕ ALUM. MON.

SURVEYOR'S AFFIDAVIT:

STATE OF WISCONSIN)  
Green COUNTY) SS

I HEREBY CERTIFY THAT I, Richard D. Talarczyk, have complied with the Wisconsin Statutes, Statutes of the United States, and the rules and regulations made by the Secretary of the interior in the location of the corner shown above.

DATE OF SURVEY: 7-23-73 to 11-21-73

*Richard D. Talarczyk*



*p. 12*

RECORD OF U.S. PUBLIC LAND SURVEY CONTROL STATION

QUARTER SECTION CORNER  $\frac{12|12}{13|13}$  TOWNSHIP 2 N, RANGE 1 W 8, GRANT COUNTY, WISCONSIN

GEODETIC SURVEY BY: \_\_\_\_\_

STATE PLANE COORDINATES OF: \_\_\_\_\_  
 NORTH \_\_\_\_\_  
 EAST \_\_\_\_\_

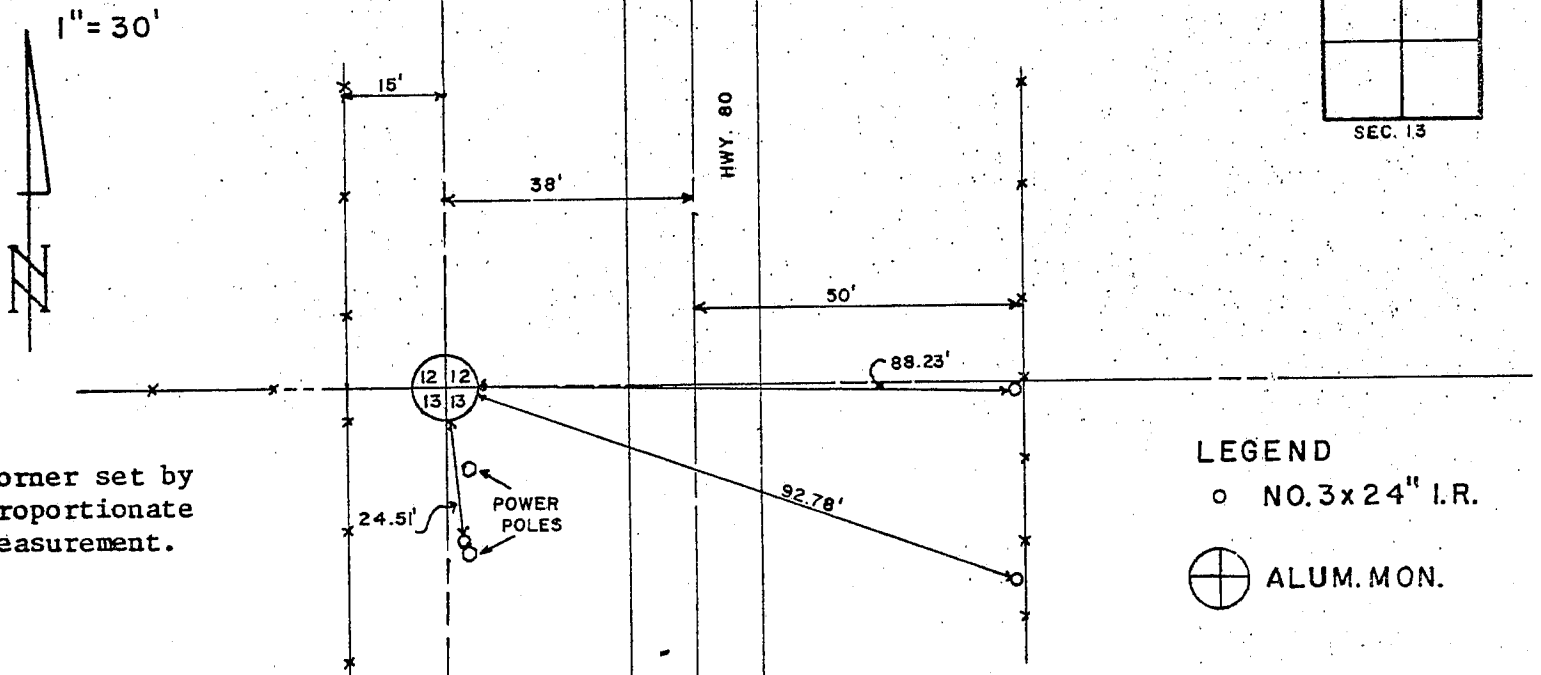
ELEVATION OF STATION: \_\_\_\_\_ THETA ANGLE: \_\_\_\_\_

HORIZONTAL DATUM: WISCONSIN STATE PLANE COORDINATE SYSTEM, SOUTH ZONE

VERTICAL DATUM: MEAN SEA LEVEL, 1929 ADJUSTMENT

HORIZONTAL & VERTICAL CONTROL ACCURACY: SECOND ORDER

LOCATION SKETCH:



SURVEYOR'S AFFIDAVIT:

STATE OF WISCONSIN) SS  
Green COUNTY)

I HEREBY CERTIFY THAT I, Richard D. Talarczyk, have complied with the Wisconsin Statutes, Statutes of the United States, and the rules and regulations made by the Secretary of the interior in the location of the corner shown above.

DATE OF SURVEY: 7-23-73 to 11-21-73

*Richard D. Talarczyk*

