

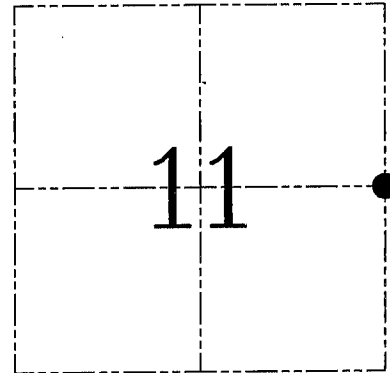
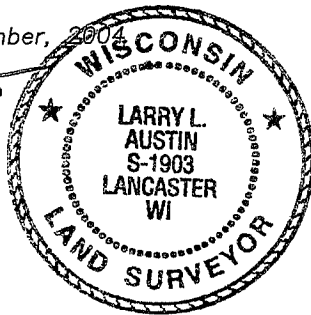
U.S. PUBLIC LAND SURVEY MONUMENT RECORD – GRANT COUNTY, WI
Section 11, Town 2 North Range 1 West, Town of Smelser

CERTIFICATE

I, Larry L. Austin, do hereby certify that the corner location on this record was determined by me and/or under my direct supervision and that this U.S. public land survey monument record is correct and complete to the best of my knowledge and belief.

Dated this 28th day of December, 2004

Larry L. Austin
 Larry L. Austin S-1903



● = CORNER LOCATION

HISTORY OF CORNER ESTABLISHMENT

Corner was originally set in 1832 by Lyon. In 1973 Talarczyk set a Cast Aluminum Monument at this location. No other record of the corner was found.

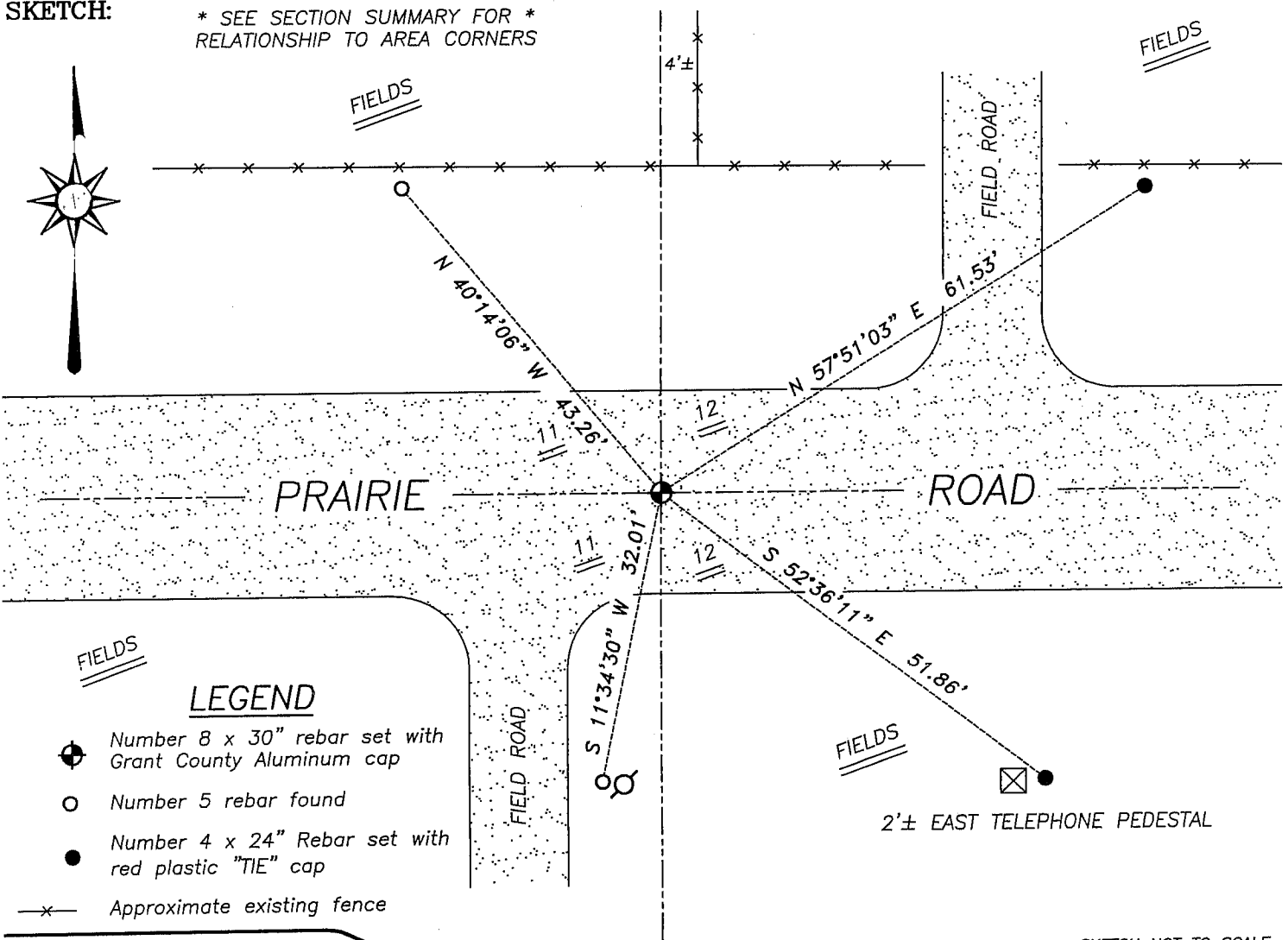
DESCRIPTION OF CORNER EVIDENCE FOUND

I found evidence of a deteriorated Cast Aluminum Monument and replaced it with a No. 8 iron bar with a Grant County Aluminum Cap, and set two new ties. Verified this location using EDM & GPS methods.

DESCRIPTION OF CORNER AND WITNESS MONUMENTS, references and accessories used to perpetuate the original or re-established location of this corner. Witnesses to corner location Bobby Sedgwick & Shelby Blindert & Brad Digman

SKETCH:

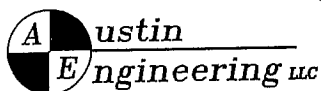
* SEE SECTION SUMMARY FOR *
 RELATIONSHIP TO AREA CORNERS



LEGEND

- Number 8 x 30" rebar set with Grant County Aluminum cap
- Number 5 rebar found
- Number 4 x 24" Rebar set with red plastic "TIE" cap
- x- Approximate existing fence

SKETCH NOT TO SCALE



4211 HWY 81 E, LANCASTER, WI 53813
 PHONE 608-723-6363 FAX 608-723-6702

JOB NUMBER 04S255
 FIELDBOOK: TSDR, 2415A
 G:\T2NR1W\17
 H:\TIE\T2NR1W\39

DRAWN BY: SW AUSTIN
 APPROVED: LL AUSTIN

RECORD OF U.S. PUBLIC LAND SURVEY CONTROL STATION

QUARTER SECTION CORNER $\frac{11}{11}$ $\frac{12}{12}$ TOWNSHIP 2 N, RANGE 1 W $\frac{1}{4}$, GRANT COUNTY, WISCONSIN
 GEODETIC SURVEY BY: _____

STATE PLANE COORDINATES OF: _____
 NORTH _____
 EAST _____

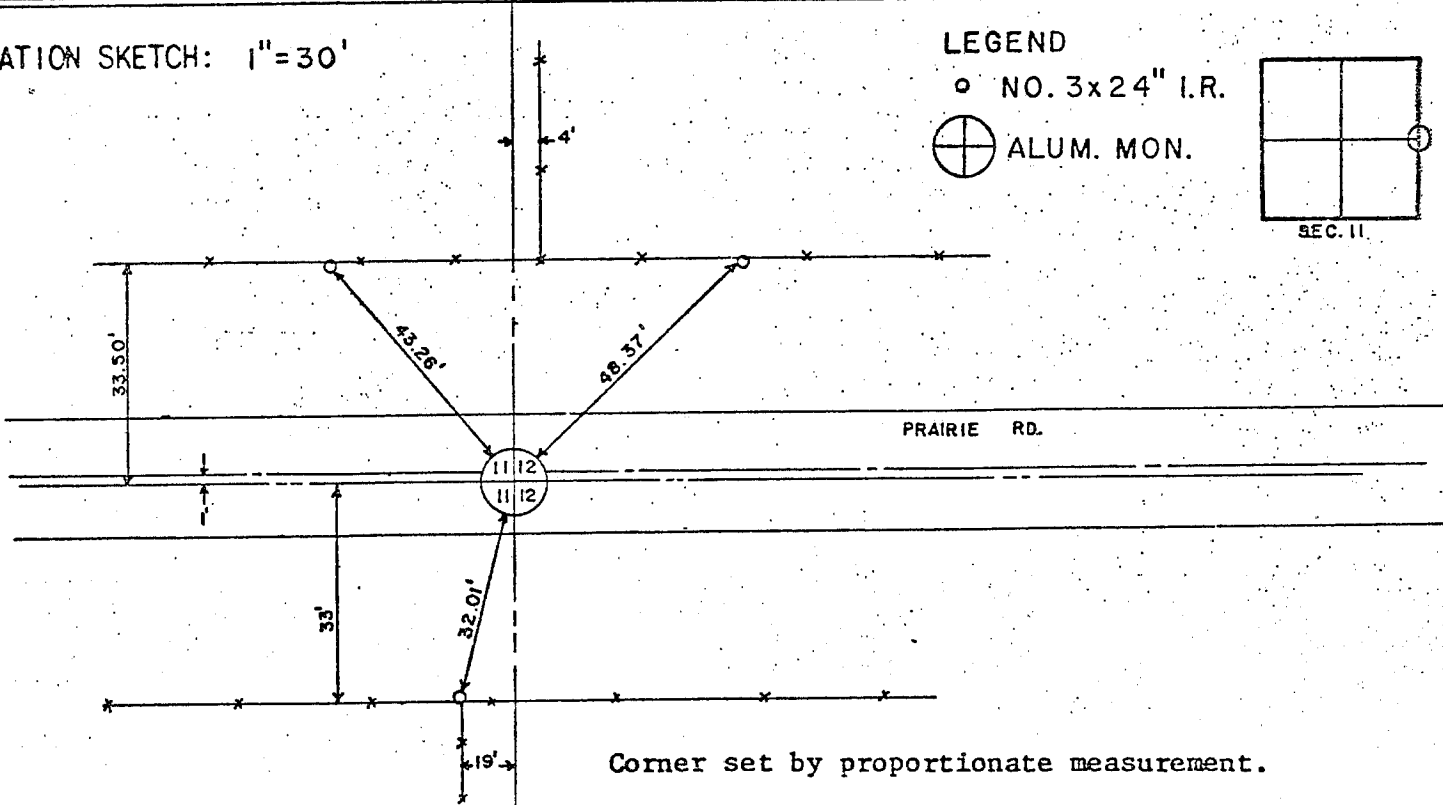
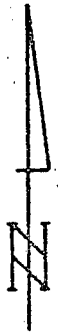
ELEVATION OF STATION: _____ THETA ANGLE: _____

HORIZONTAL DATUM: WISCONSIN STATE PLANE COORDINATE SYSTEM, SOUTH ZONE

VERTICAL DATUM: MEAN SEA LEVEL, 1929 ADJUSTMENT

HORIZONTAL & VERTICAL CONTROL ACCURACY: SECOND ORDER

LOCATION SKETCH: 1" = 30'



SURVEYOR'S AFFIDAVIT:

STATE OF WISCONSIN) SS
 Green COUNTY)

I HEREBY CERTIFY THAT I, Richard D. Talarczyk, have complied with the Wisconsin Statutes, Statutes of the United States, and the rules and regulations made by the Secretary of the interior in the location of the corner shown above.

DATE OF SURVEY: 7-23-73 to 11-21-73 *Richard D. Talarczyk*

