

U.S. PUBLIC LAND SURVEY MONUMENT RECORD - GRANT COUNTY, WI

Section 11, Town 2 North Range 1 West, Town of Smelser (a)

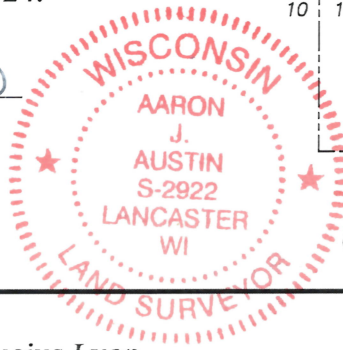
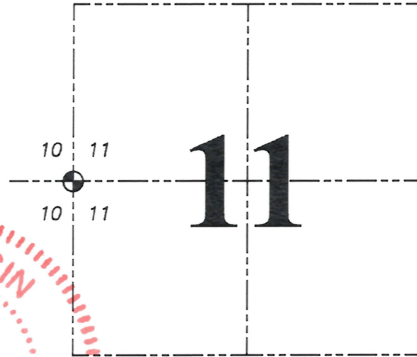
NOTE: This form is intended and designed to fulfill all requirements of the Wisconsin Administrative Code Chapter A-E 7.08, U.S. Public Land Survey Monument Record (3) (a) (b) (c) (d) (e) (f) (g) (h) (i).

CERTIFICATE: (i)

I, Aaron J. Austin, Wisconsin Professional Land Surveyor, do hereby certify that the corner location on this record was determined by me and/or under my direct supervision and that this U.S. Public Land Survey Monument Record is correct and complete to the best of my knowledge and belief.

Dated this 4th day of November, 2024.

Aaron J. Austin (signature)
Aaron J. Austin, S-2922



⊙ = CORNER LOCATION

Grant County Coordinates:
NAD 83 (2011)
Northing: 455,405.62
Easting: 885,041.72

HISTORY OF CORNER ESTABLISHMENT:

Original corner was set in 1832 by Lucius Lyon.
Larry Austin set a 1" Rebar with a Grant County Aluminum Cap and prepared a Survey Monument Record dated 10-18-2001.

DESCRIPTION OF CORNER EVIDENCE FOUND: (b) (f) (g) (h)

I found a 1" Rebar and two witness corners Larry set. I set two witness corners after I verified the Monument's location with G.P.S. and E.D.M. methods.

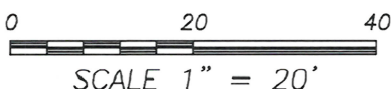
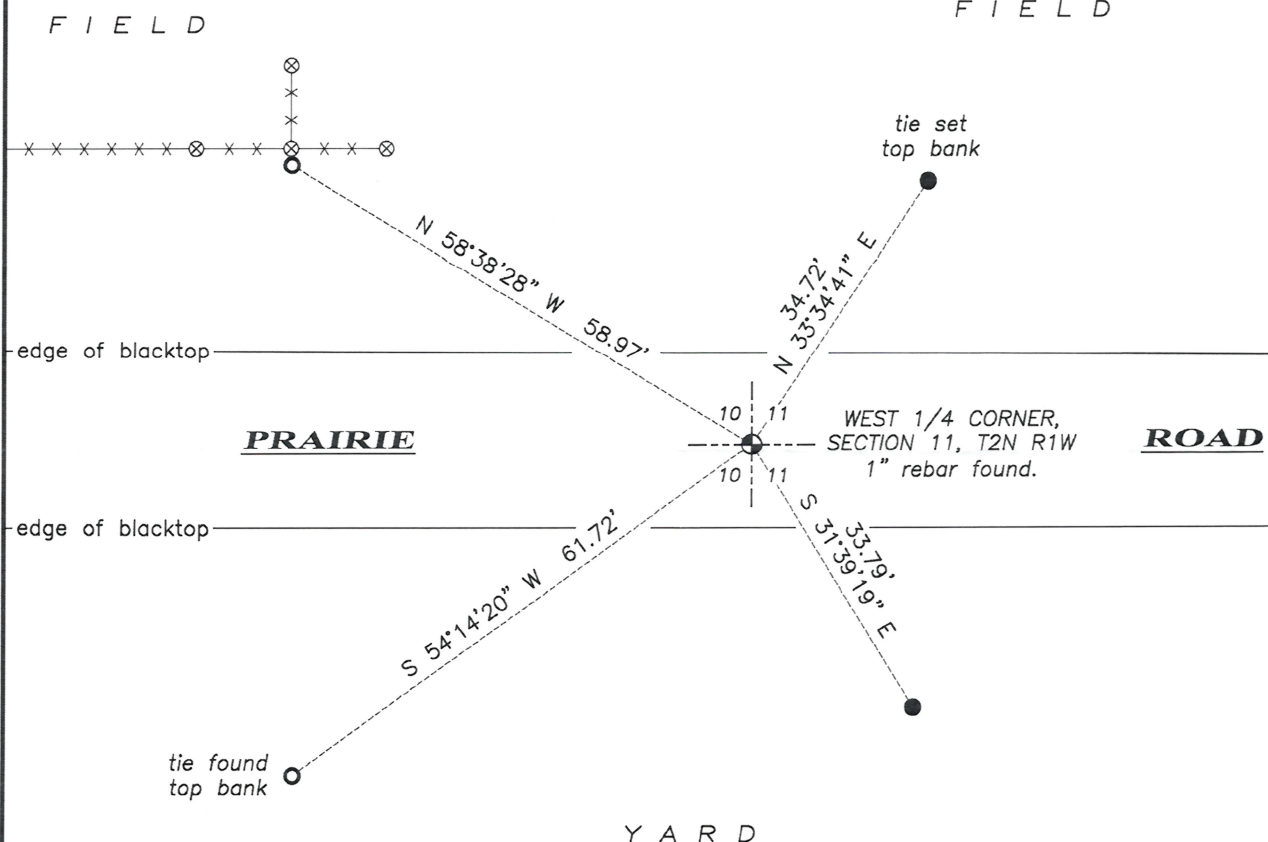
DESCRIPTION OF CORNER AND WITNESS MONUMENTS, references and accessories used to perpetuate the original or re-established location of this corner. (c) (d) (e)

Witnesses to corner location Owen Austin, Tanner Austin.
Drawn by: Owen Austin.

SKETCH:

LEGEND

- ⊙ Section Corner—as designated
○ 1/2" rebar found
● 3/4" x 18" rebar set
⊗ Brace Post



SCALE 1" = 20'

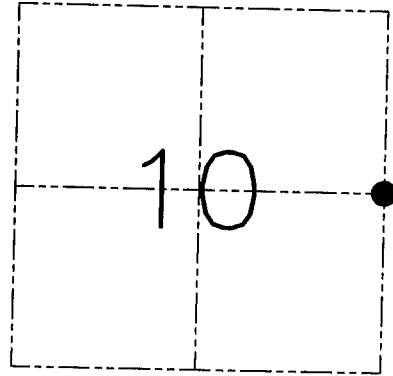
**U.S. PUBLIC LAND SURVEY MONUMENT RECORD - GRANT COUNTY, WI**  
 Section 10, Town 2 North Range 1 West, Town of Smelser

**CERTIFICATE**

I, Larry L. Austin, do hereby certify that the corner location on this record was determined by me and/or under my direct supervision and that this U.S. public land survey monument record is correct and complete to the best of my knowledge and belief.

Dated this 18th day of October, 2001

*Larry L. Austin*  
 Larry L. Austin S-1903



● = CORNER LOCATION

**HISTORY OF CORNER ESTABLISHMENT**

Corner was originally set in 1832 by Lucius Lyon. Overton tied to the corner in 1855. No other record of the corner was found.

**DESCRIPTION OF CORNER EVIDENCE FOUND**

I reset the corner based on centerline of road for the North-South location. Easting was established based on 3 rods East of fence North. This location fit the reset of the Section very well. Verified this location using EDM & GPS methods.

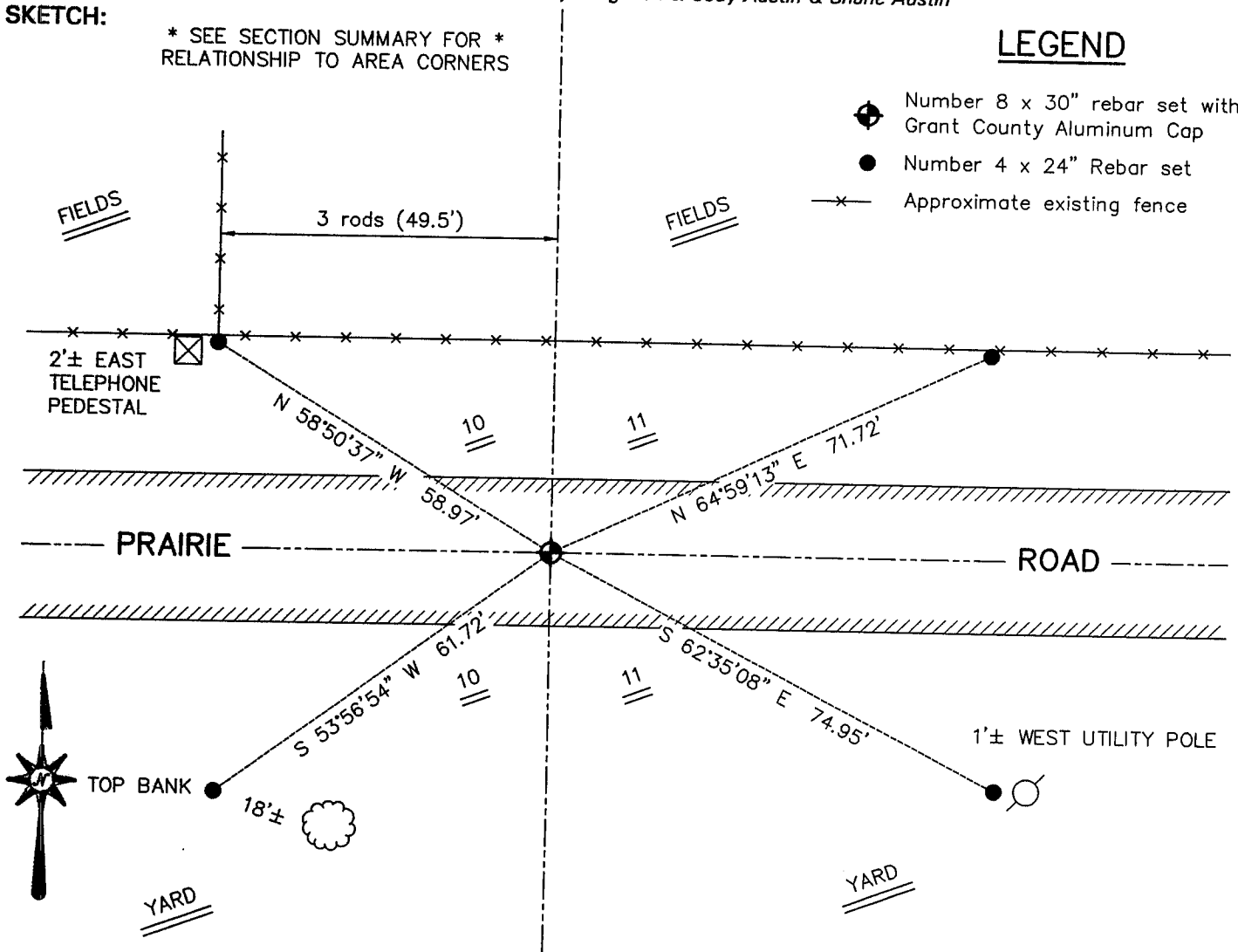
**DESCRIPTION OF CORNER AND WITNESS MONUMENTS, references and accessories used to perpetuate the original or re-established location of this corner. Witnesses to the corner location Bobby Sedgwick & Cody Austin & Shane Austin**

**SKETCH:**

\* SEE SECTION SUMMARY FOR \*  
 RELATIONSHIP TO AREA CORNERS

**LEGEND**

- Number 8 x 30" rebar set with Grant County Aluminum Cap
- Number 4 x 24" Rebar set
- Approximate existing fence



SKETCH NOT TO SCALE

**AUSTIN ENGINEERING, LLC**

4211 HWY 81 EAST, LANCASTER, WI 53813  
 PHONE 608-723-6363 FAX 608-723-6702

FIELDBOOK: SDR33, 2114  
 G: \T2NR1W\03A  
 C: \SWA\TIE\T2NR1W\38  
 CREW: BS-SB-SA-CA

DRAWN BY: SW AUSTIN  
 APPROVED: LL AUSTIN

**CORNER NUMBER 38**