

# U.S. PUBLIC LAND SURVEY MONUMENT RECORD - GRANT COUNTY, WI

Section 11, Town 2 North Range 1 West, Town of Smelser (a)

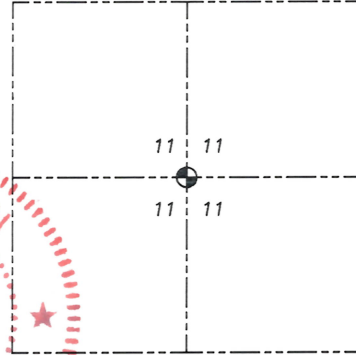
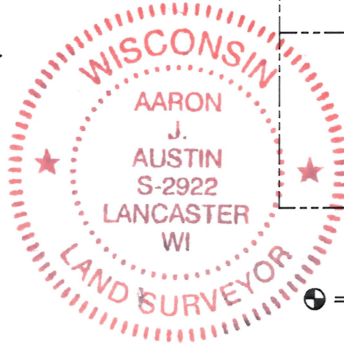
NOTE: This form is intended and designed to fulfill all requirements of the Wisconsin Administrative Code Chapter A-E 7.08, U.S. Public Land Survey Monument Record (3) (a) (b) (c) (d) (e) (f) (g) (h) (i).

**CERTIFICATE:** (i)

I, Aaron J. Austin, Wisconsin Professional Land Surveyor, do hereby certify that the corner location on this record was determined by me and/or under my direct supervision and that this U.S. Public Land Survey Monument Record is correct and complete to the best of my knowledge and belief.

Dated this 8th day of November, 2024.

*Aaron J. Austin*  
Aaron J. Austin, S-2922



● = CORNER LOCATION

Grant County Coordinates:  
NAD 83 (2011)  
Northing: 455,399.76  
Easting: 887,701.87

**HISTORY OF CORNER ESTABLISHMENT:**

Corner was not set with the Original Government Survey. I have found no record of this corner being established.

**DESCRIPTION OF CORNER EVIDENCE FOUND:** (b) (f) (g) (h)

I set a 1/2" x 4 3/4" Steel Cotton Gin Spike at the intersection of the North-South and East-West 1/4 lines of Section 11. I set four witness corners after I verified the Monument's location with G.P.S. and E.D.M. methods.

**DESCRIPTION OF CORNER AND WITNESS MONUMENTS,** references and accessories used to perpetuate the original or re-established location of this corner. (c) (d) (e)

Witnesses to corner location Owen Austin, Tanner Austin.  
Drawn by: Owen Austin.

**SKETCH:**

