

# U.S. PUBLIC LAND SURVEY MONUMENT RECORD - GRANT COUNTY, WI

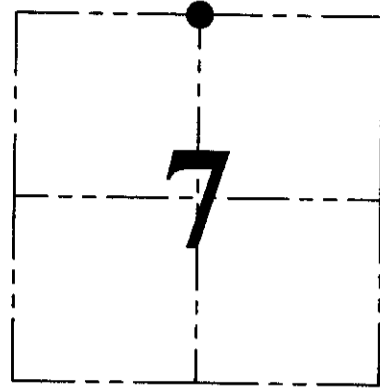
Section 7, Town 2 North Range 1 West, Town of Smelser

**CERTIFICATE:**

I, Aaron J. Austin, Wisconsin Professional Land Surveyor, do hereby certify that the corner location on this record was determined by me and/or under my direct supervision and that this U.S. Public Land Survey Monument Record is correct and complete to the best of my knowledge and belief.

Dated this 13th day of August, 2015.

AARON AUSTIN  
S-2922  
LANCASTER, WI  
AARON J. AUSTIN, S-2922  
LAND SURVEYOR



● = CORNER LOCATION

HISTORY OF CORNER ESTABLISHMENT:

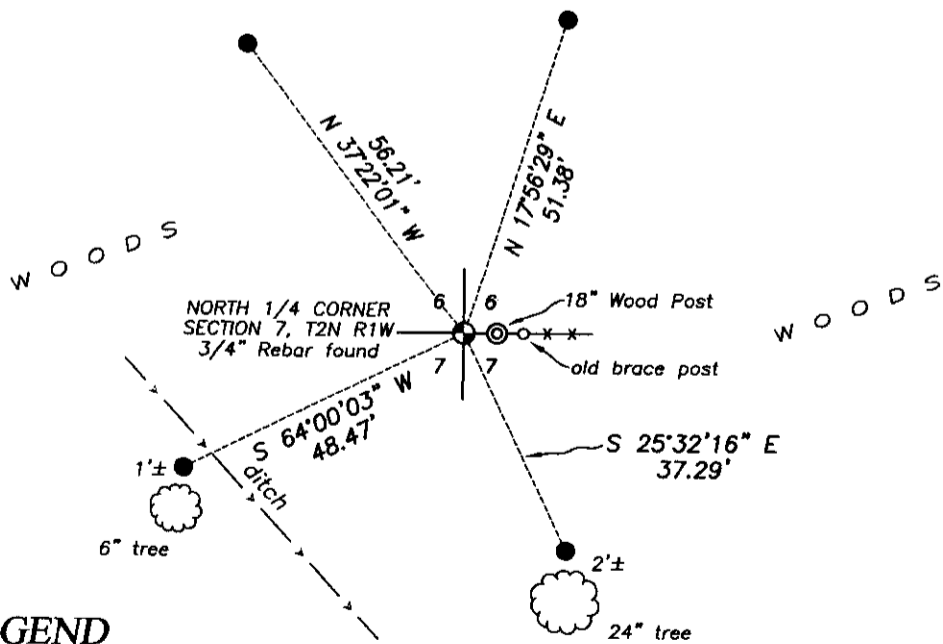
- 1832-Lucius Lyon set original corner.
- 1841-Freeman tied to the corner on a Survey in Book A, Page 54.
- 1842-Stuntz tied to the corner on a Survey in Book A, Page 304.
- 1986-Larry Austin tied to the corner on a Survey in Book W, Page 125.
- 1996-Larry Austin tied to the corner on a Survey in Book X, Page 21.
- 1996-Larry Austin tied to the corner on a Survey in Book W, Page 122, 123 and 124.
- 1999-Larry Austin tied to the corner on a Survey in Book 6, Page 93.
- 1999-Larry Austin tied to the corner on a Survey in Book 5, Page 53.
- 2003-Larry Austin tied to the corner on Certified Survey Map No. 1016 and 1017.
- 2005-Larry Austin tied to the corner on a Survey in Book 18, Page 7.
- 2005-Larry Austin tied to the corner on Certified Survey Map No. 1173 and 1174.
- 2006-Larry Austin tied to the corner on Certified Survey Map No. 1256.
- 2007-Larry Austin tied to the corner on Certified Survey Map No. 1350.
- 2007-Larry Austin tied to the corner on a Survey in Book 20, Page 81.
- 2009-Larry Austin tied to the corner on Certified Survey Map No. 1465.

DESCRIPTION OF CORNER EVIDENCE FOUND:

I found a 3/4" rebar in place as referenced by the above surveys.  
I set 4 witness corners after verification by E.D.M. and G.P.S. methods.

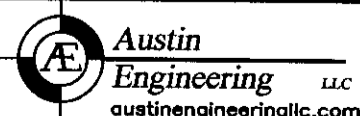
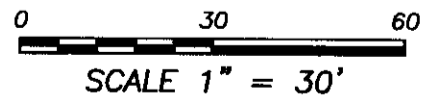
DESCRIPTION OF CORNER AND WITNESS MONUMENTS, references and accessories used to perpetuate the original or re-established location of this corner. Witnesses to corner location Shane Austin.

SKETCH:



**LEGEND**

- ⊙ Section Corner - as designated
- 1/2" x 12" Rebar set with red plastic "TIE" cap



Austin Engineering LLC  
austinengineeringllc.com  
4211 HWY 81 E, LANCASTER, WI 53813  
PHONE: 608-723-6363 FAX: 608-723-6702

JOB NO: 15s139  
H:\CRD\15s100  
H:\TIE\T2NR1W\32

FIELDBOOK: TDSR  
DRAWN BY: AJ AUSTIN  
CREW: SW AUSTIN