

U.S. PUBLIC LAND SURVEY MONUMENT RECORD - GRANT COUNTY, WI

Section 3, Town 2 North Range 1 West, Town of Smelser (a)

NOTE: This form is intended and designed to fulfill all requirements of the Wisconsin Administrative Code Chapter A-E 7.08, U.S. Public Land Survey Monument Record (3) (a) (b) (c) (d) (e) (f) (g) (h) (i).

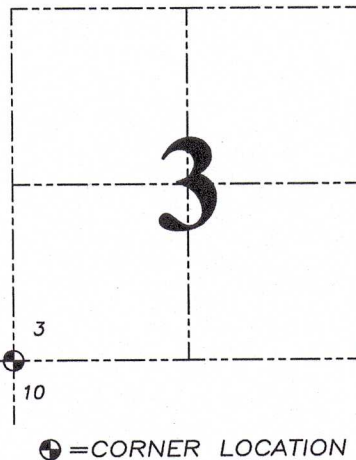
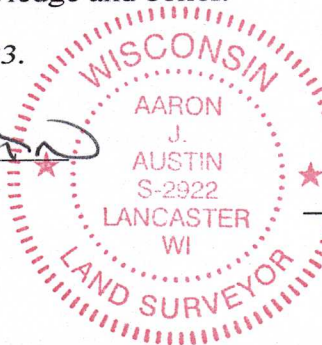
CERTIFICATE: (i)

I, Aaron J. Austin, Wisconsin Professional Land Surveyor, do hereby certify that the corner location on this record was determined by me and/or under my direct supervision and that this U.S. Public Land Survey Monument Record is correct and complete to the best of my knowledge and belief.

Dated this 26th day of June, 2023.

Aaron J. Austin (Signature)

Aaron J. Austin, S-2922



⊕ = CORNER LOCATION

Grant County Coordinates: NAD 83 (2011) Northing: 458,044.84 Easting: 879,782.46

HISTORY OF CORNER ESTABLISHMENT:

Original corner was set in 1832 by Lucius Lyon. Larry Austin set a 3/4" Rebar with a Grant County Aluminum Cap and prepared a Survey Monument Record dated 5-7-1996. Larry Austin set a 3/4" Rebar with a Grant County Aluminum Cap and prepared a Survey Monument Record dated 4-30-1997.

DESCRIPTION OF CORNER EVIDENCE FOUND: (b) (f) (g) (h)

I found the Aluminum Capped Rebar and two witness corners Larry set. I set two additional witness corners after I verified the Monument's location with G.P.S. and E.D.M. methods.

DESCRIPTION OF CORNER AND WITNESS MONUMENTS, references and accessories used to perpetuate the original or re-established location of this corner. (c) (d) (e)

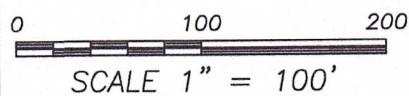
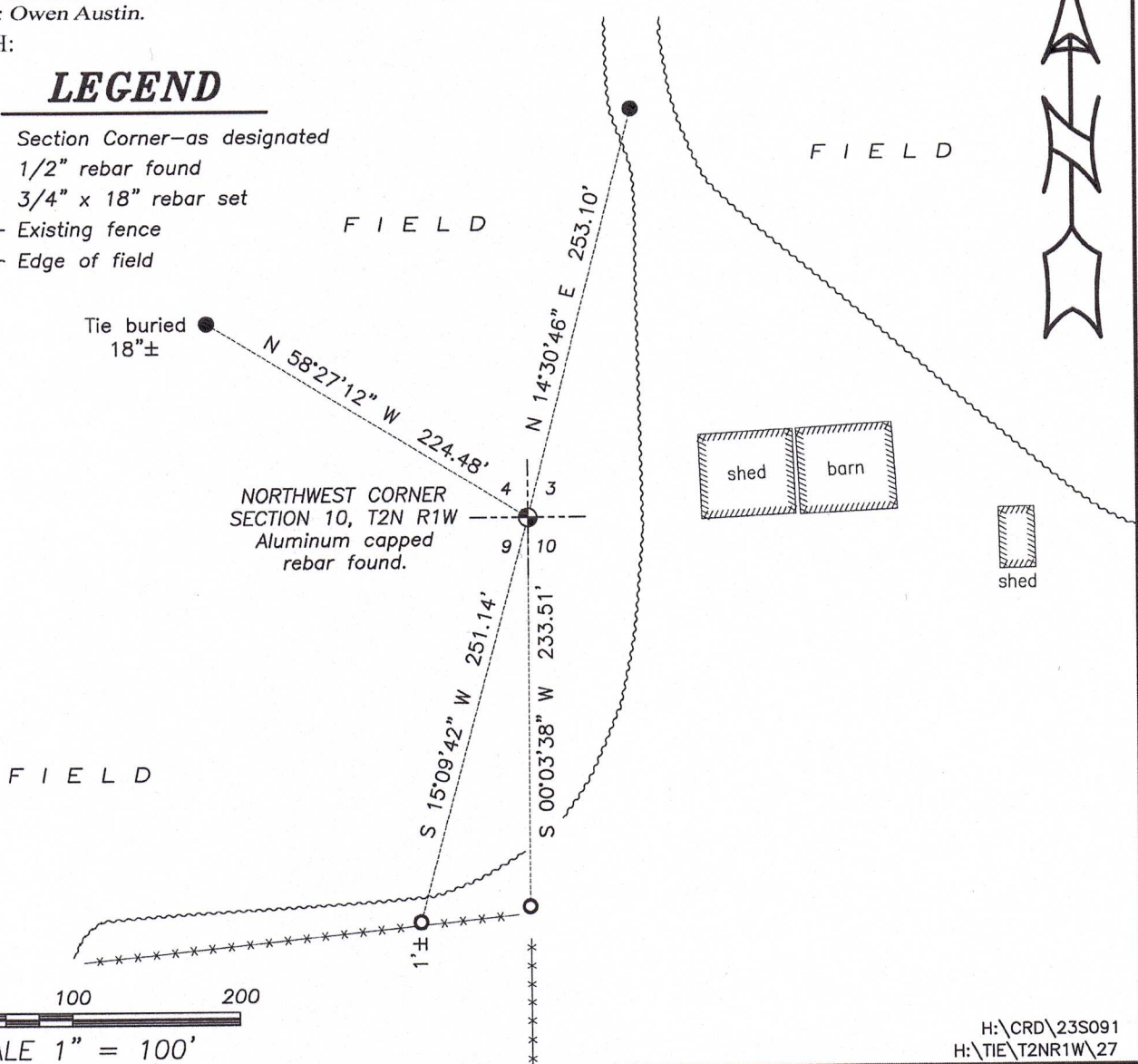
Witnesses to corner location Shane Austin, Owen Austin, Tanner Austin.

Drawn by: Owen Austin.

SKETCH:

LEGEND

- Section Corner—as designated
1/2" rebar found
3/4" x 18" rebar set
Existing fence
Edge of field



GRANT COUNTY

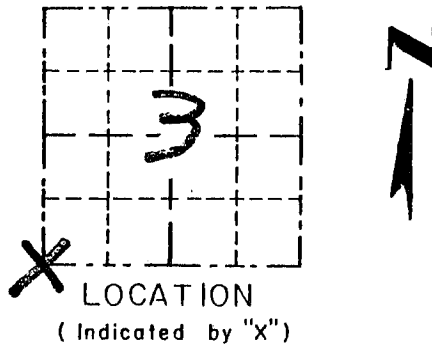
Survey Monument Record

TYPE OF MONUMENT 3/4" X 24" IRON ROD SET
 STATE PLANE COORDINATES: N W/CAP
 E _____
 ELEVATION — M.S.L. DATUM: _____
 THETA ANGLE: _____
 FIELD BOOK: 96-04
 PAGE _____

CORNER NO. 27
 SECTION 3
 TOWN 2N
 RANGE 1W

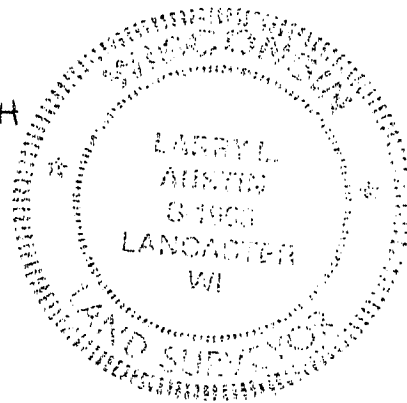
BASIS FOR MONUMENT LOCATION

(Use reverse side if necessary)



NO RECORD FOUND SINCE ORIGINAL SURVEY IN 1832 BY LYON. I ACCEPTED OCCUPATION. DETERMINING EAST - WEST LOCATION. THE NORTH - SOUTH LOCATION WAS DETERMINED BY PROPORTIONING 1/2 MILE SOUTH & 1 MILE NORTH; VERIFIED BY EDM TRAVERSE OF THE AREA.

FOUND REMNANTS OF POST AT 12" DEPTH IN FIELD.



CERTIFIED CORRECT

Larry L. Austin
 Registered Land Surveyor

DATE: 5-7-96

TIE SKETCH

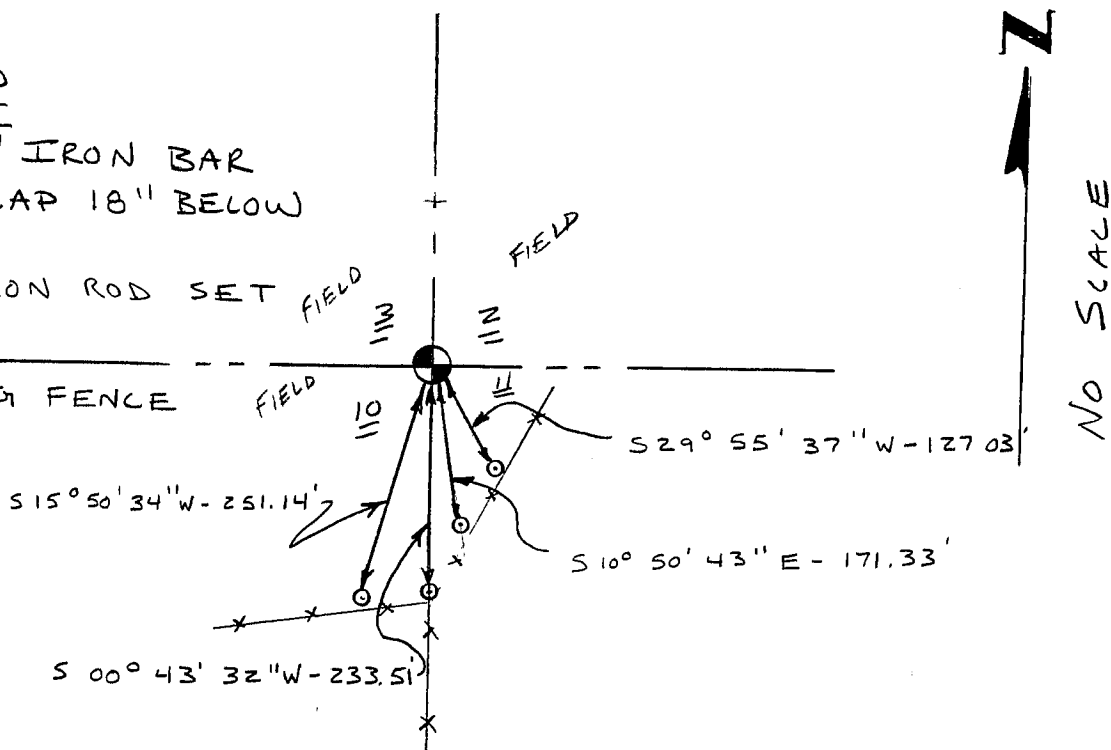
Show at least three (3) ties and monument

LEGEND

⊕ 3/4" X 24" IRON BAR SET W/ CAP 18" BELOW SURFACE

○ 1/2" X 15" IRON ROD SET AS TIES

--- EXISTING FENCE



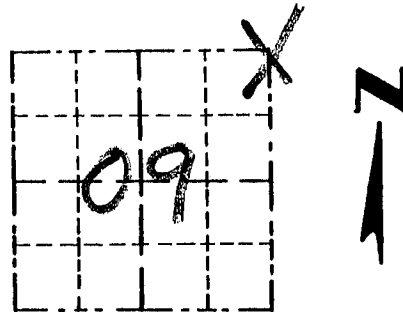
NO SCALE

Survey Monument Record

TYPE OF MONUMENT 3/4" X 24" IRON
BAR SET W/ CAP

CORNER NO. 27
 SECTION 09
 TOWN 2N
 RANGE 1W

FIELD BOOK: 96-04
 PAGE (18)



LOCATION
 (Indicated by "X")

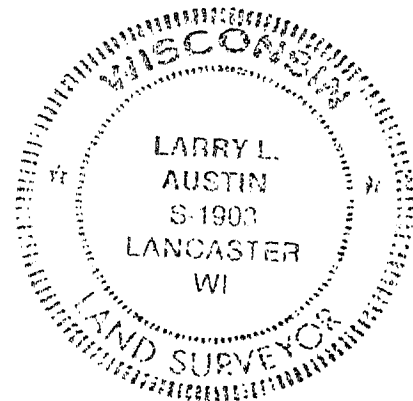
BASIS FOR MONUMENT LOCATION

(Use reverse side if necessary)

Show info such as: History of corner, with reference to Vol. and pg., dates, surveyor; exact description of monument replaced; if location computed, by taped or EDM traverse; landowner, remarks, etc.

CORNER SET IN 1832 BY LUCIUS LYON, NO RECORD OF CORNER FOUND SINCE ORIGINAL SURVEY; CORNER SET ONLINE WITH FENCE SOUTH, MIDWAY BETWEEN THE E 1/4 SECTION 9 AND THE E 1/4 SECTION 4. VERIFIED ITS LOCATION USING EDM METHODS.

SEAL:



CERTIFIED CORRECT

Larry L. Austin
 Registered Land Surveyor

DATE: 4/30/97

TIE SKETCH

Show at least three (3) ties and monument

LEGEND

- 3/4" X 24" IRON BAR SET W/ ALUM. CAP. FIELDS
- 1/2" X 15" IRON BAR SET
- XX EXISTING FENCE

