

U.S. PUBLIC LAND SURVEY MONUMENT RECORD - GRANT COUNTY, WI

Section 11, Town 2 North Range 1 West, Town of Smelser (a)

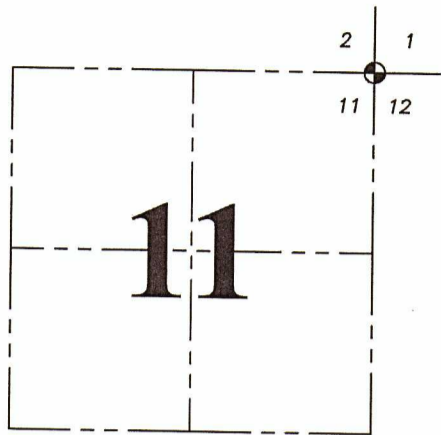
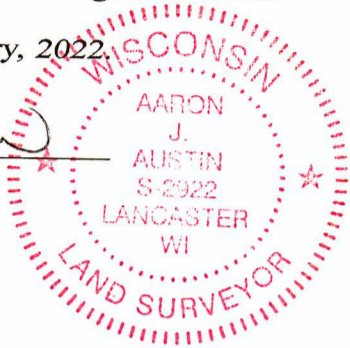
NOTE: This form is intended and designed to fulfill all requirements of the Wisconsin Administrative Code Chapter A-E 7.08, U.S. Public Land Survey Monument Record (3) (a) (b) (c) (d) (e) (f) (g) (h) (i).

CERTIFICATE: (i)

I, Aaron J. Austin, Wisconsin Professional Land Surveyor, do hereby certify that the corner location on this record was determined by me and/or under my direct supervision and that this U.S. Public Land Survey Monument Record is correct and complete to the best of my knowledge and belief.

Dated this 4th day of February, 2022

Aaron J. Austin
 Aaron J. Austin, S-2922



☉ = CORNER LOCATION

Grant County Coordinates:
 NAD 83 (2011)
 Northing: 458,029.94
 Easting: 890,350.19

HISTORY OF CORNER ESTABLISHMENT:

Original corner was set in 1832 by Lucius Lyon.
 Richard Talarczyk set an Aluminum Monument and prepared a Survey Monument Record dated 11/21/1973.

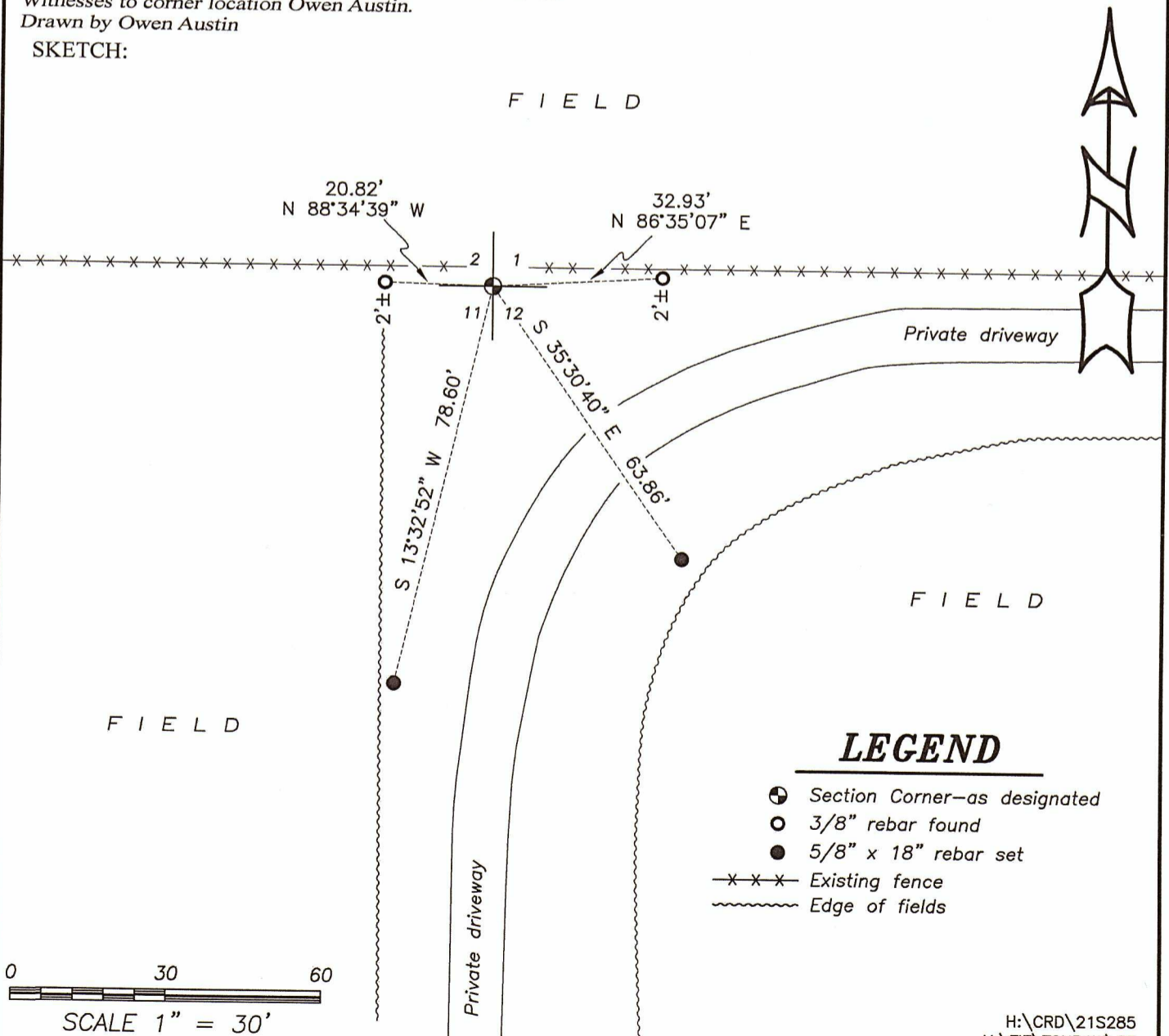
DESCRIPTION OF CORNER EVIDENCE FOUND: (b) (f) (g) (h)

I found the Aluminum Monument and two witness corners Talarczyk set. I set two additional witness corners after I verified the Monument's location with G.P.S. and E.D.M. methods.

DESCRIPTION OF CORNER AND WITNESS MONUMENTS: references and accessories used to perpetuate the original or re-established location of this corner. (c) (d) (e)

Witnesses to corner location Owen Austin.
 Drawn by Owen Austin

SKETCH:



RECORD OF U.S. PUBLIC LAND SURVEY CONTROL STATION

QUARTER SECTION CORNER $\frac{21}{1112}$ TOWNSHIP 2 N, RANGE 1W 7, GRANT COUNTY, WISCONSIN

GEODETIC SURVEY BY: _____

STATE PLANE COORDINATES OF: _____
 NORTH _____
 EAST _____

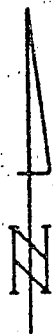
ELEVATION OF STATION: _____ THETA ANGLE: _____


HORIZONTAL DATUM: WISCONSIN STATE PLANE COORDINATE SYSTEM, SOUTH ZONE

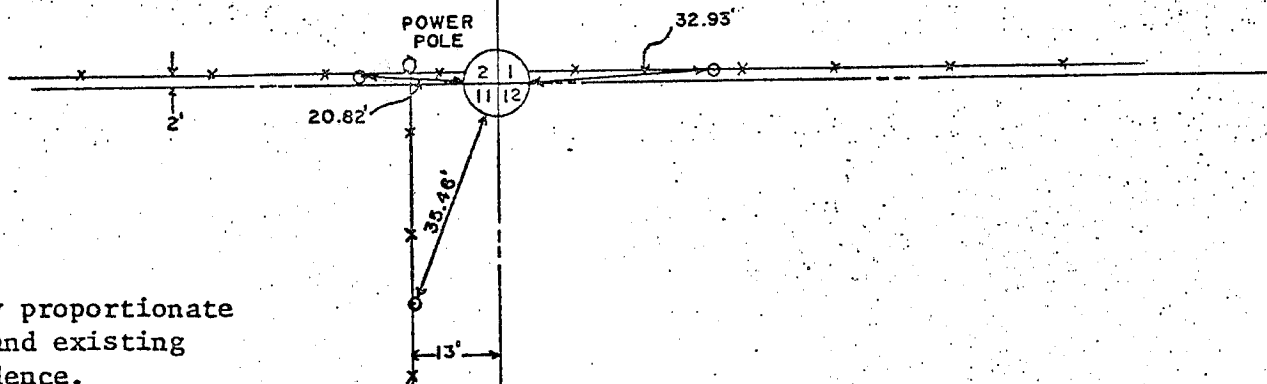
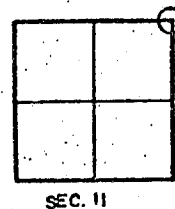
VERTICAL DATUM: MEAN SEA LEVEL, 1929 ADJUSTMENT

HORIZONTAL & VERTICAL CONTROL ACCURACY: SECOND ORDER

LOCATION SKETCH: 1" = 30'



LEGEND
 o NO. 3 x 24" I.R.
 ALUM. MON.



Corner set by proportionate measurement and existing physical evidence.

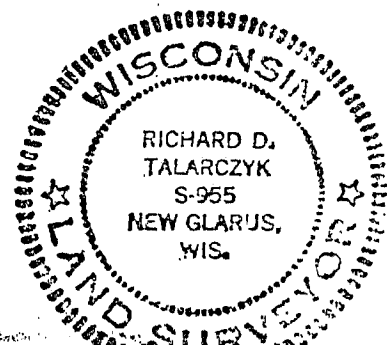
SURVEYOR'S AFFIDAVIT:

STATE OF WISCONSIN)
Green COUNTY) SS

I HEREBY CERTIFY THAT I, Richard D. Talarczyk, have complied with the Wisconsin Statutes, Statutes of the United States, and the rules and regulations made by the Secretary of the interior in the location of the corner shown above.

DATE OF SURVEY: 7-23-73 to 11-21-73

Richard D. Talarczyk



RECORD OF U.S. PUBLIC LAND SURVEY CONTROL STATION

QUARTER SECTION CORNER $\frac{2}{11} \frac{1}{12}$ TOWNSHIP 2 N, RANGE 1W X, GRANT COUNTY, WISCONSIN

GEODETTIC SURVEY BY: _____

STATE PLANE COORDINATES OF: _____
 NORTH _____
 EAST _____

ELEVATION OF STATION: _____ THETA ANGLE: _____

HORIZONTAL DATUM: WISCONSIN STATE PLANE COORDINATE SYSTEM, SOUTH ZONE

VERTICAL DATUM: MEAN SEA LEVEL, 1929 ADJUSTMENT

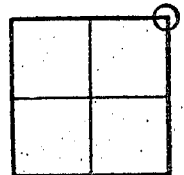
HORIZONTAL & VERTICAL CONTROL ACCURACY: SECOND ORDER

LOCATION SKETCH: 1" = 30'

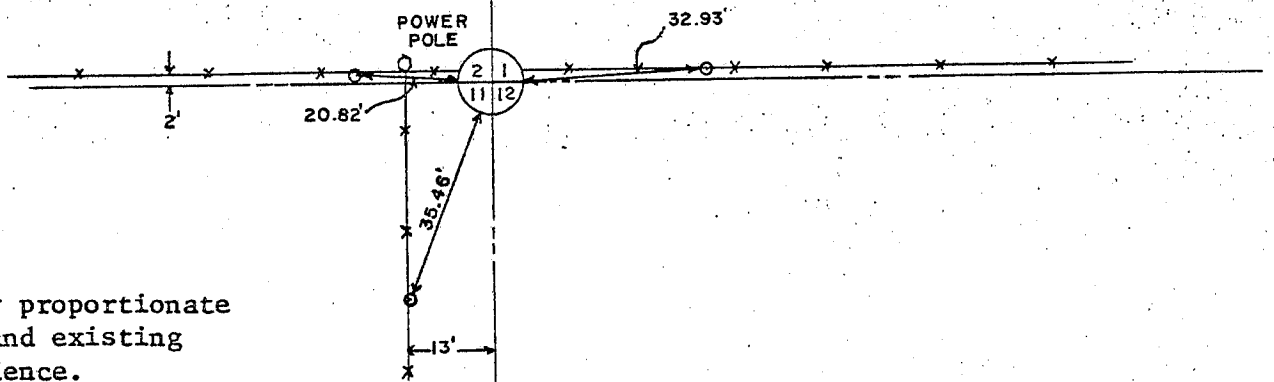
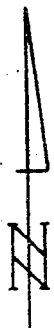
LEGEND

o NO. 3 x 24" I.R.

⊕ ALUM. MON.



SEC. 11



Corner set by proportionate measurement and existing physical evidence.

SURVEYOR'S AFFIDAVIT:

STATE OF WISCONSIN)
 Green COUNTY) SS

I HEREBY CERTIFY THAT I, Richard D. Talarczyk, have complied with the Wisconsin Statutes, Statutes of the United States, and the rules and regulations made by the Secretary of the interior in the location of the corner shown above.

DATE OF SURVEY: 7-23-73 to 11-21-73 *Richard D. Talarczyk*

