

U.S. PUBLIC LAND SURVEY MONUMENT RECORD - GRANT COUNTY, WI

Section 1, Town 2 North Range 1 West, Town of Smelser (a)

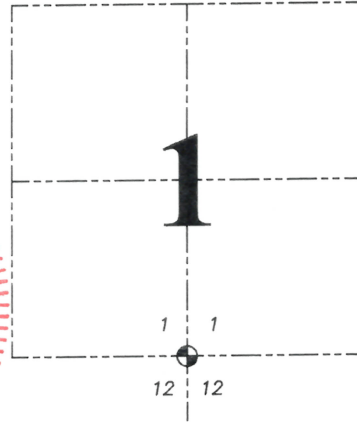
NOTE: This form is intended and designed to fulfill all requirements of the Wisconsin Administrative Code Chapter A-E 7.08, U.S. Public Land Survey Monument Record (3) (a) (b) (c) (d) (e) (f) (g) (h) (i).

CERTIFICATE: (i)

I, Aaron J. Austin, Wisconsin Professional Land Surveyor, do hereby certify that the corner location on this record was determined by me and/or under my direct supervision and that this U.S. Public Land Survey Monument Record is correct and complete to the best of my knowledge and belief.

Dated this 22nd day of November, 2023.

Aaron J. Austin
Aaron J. Austin, S-2922



☉ = CORNER LOCATION

Grant County Coordinates:
NAD 83 (2011)
Northing: 458,034.02
Easting: 892,990.77

HISTORY OF CORNER ESTABLISHMENT:

Original corner was set in 1832 by Lucius Lyon.
Talarczyk set an Aluminum Monument and prepared a Survey Monument Record in 1973.
I found an Aluminum Cap and prepared a Survey Monument Record dated 12-9-2013.

DESCRIPTION OF CORNER EVIDENCE FOUND: (b) (f) (g) (h)

I found and measured the Aluminum Cap before the road construction of Highway #80. After the road construction I set a 1/2" x 4 3/4" Steel Cotton Gin Spike. I established four witness corners after I verified the Corner's location with G.P.S. and E.D.M. methods.

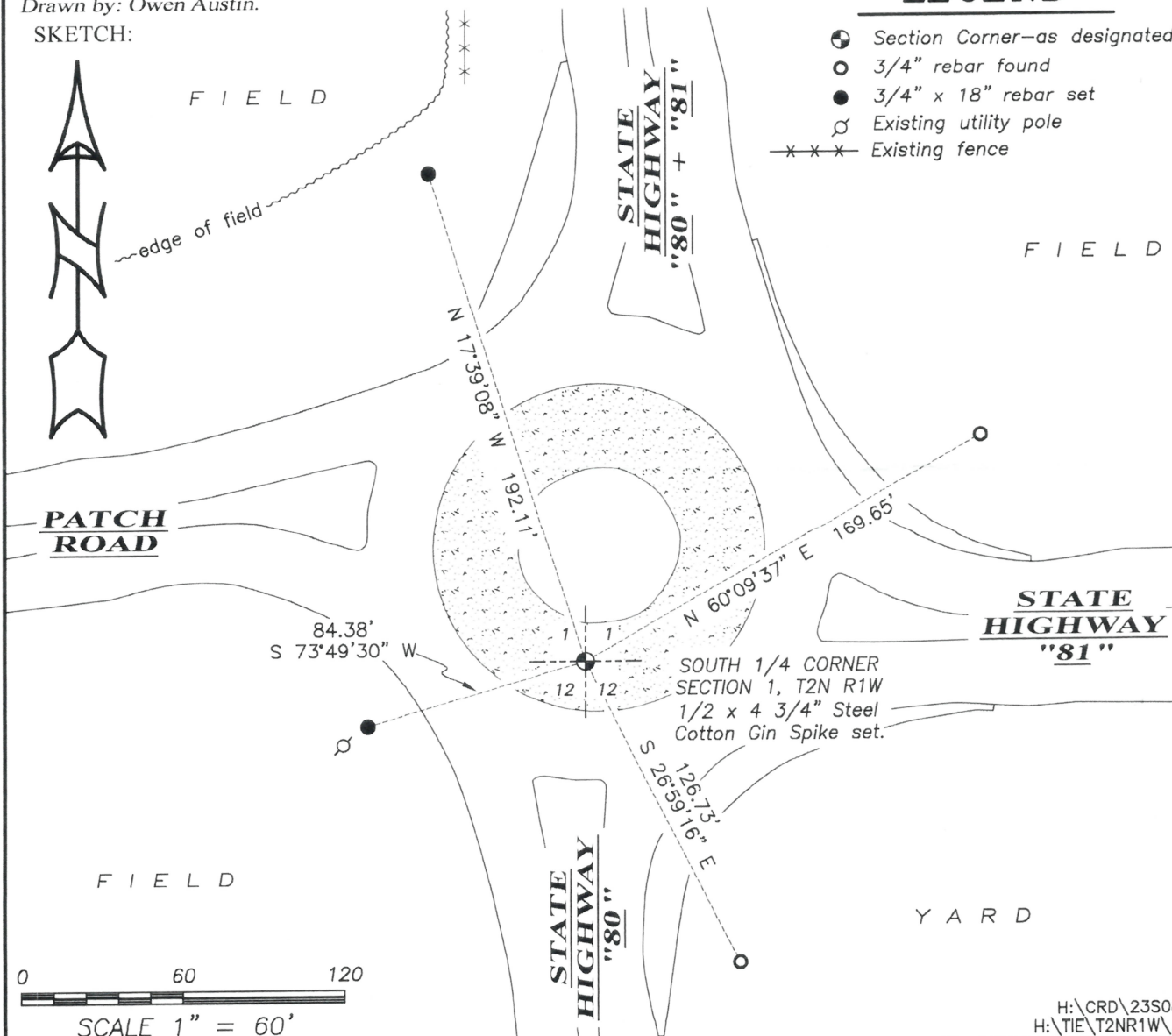
DESCRIPTION OF CORNER AND WITNESS MONUMENTS, references and accessories used to perpetuate the original or re-established location of this corner. (c) (d) (e)

Witnesses to corner location Shane Austin, Owen Austin, Tanner Austin.
Drawn by: Owen Austin.

LEGEND

- ☉ Section Corner—as designated
- 3/4" rebar found
- 3/4" x 18" rebar set
- ♂ Existing utility pole
- Existing fence

SKETCH:



U.S. PUBLIC LAND SURVEY MONUMENT RECORD - GRANT COUNTY, WI

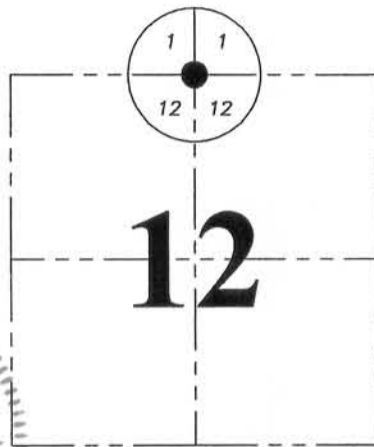
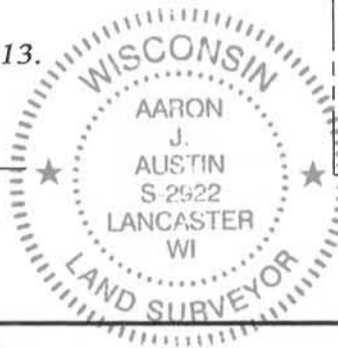
Section 12, Town 2 North Range 1 West, Town of Smelser

CERTIFICATE:

I, Aaron J. Austin, do hereby certify that the corner location on this record was determined by me and/or under my direct supervision and that this U.S. Public Land Survey Monument Record is correct and complete to the best of my knowledge and belief.

Dated this 9th day of December, 2013.

Aaron J. Austin
 Aaron J. Austin, S-2922



● = CORNER LOCATION

HISTORY OF CORNER ESTABLISHMENT:

In 1832 Corner was originally set by Lucius Lyon.
 1973 Richard Talarczyk set an Aluminum Monument for this corner and prepared a U.S. Public Land Survey record.
 In 1982 the corner was shown on R/W Project 5235-02-21. 2011,
 In 1992 Larry Austin shown this corner on a Survey filed in Book Q, Page 93.
 In 1998 Larry Austin shown this corner of a Survey filed in Book 4, Page 3.
 In 2011 I shown the corner on a Survey filed in Book 30, Page 68.

DESCRIPTION OF CORNER EVIDENCE FOUND:

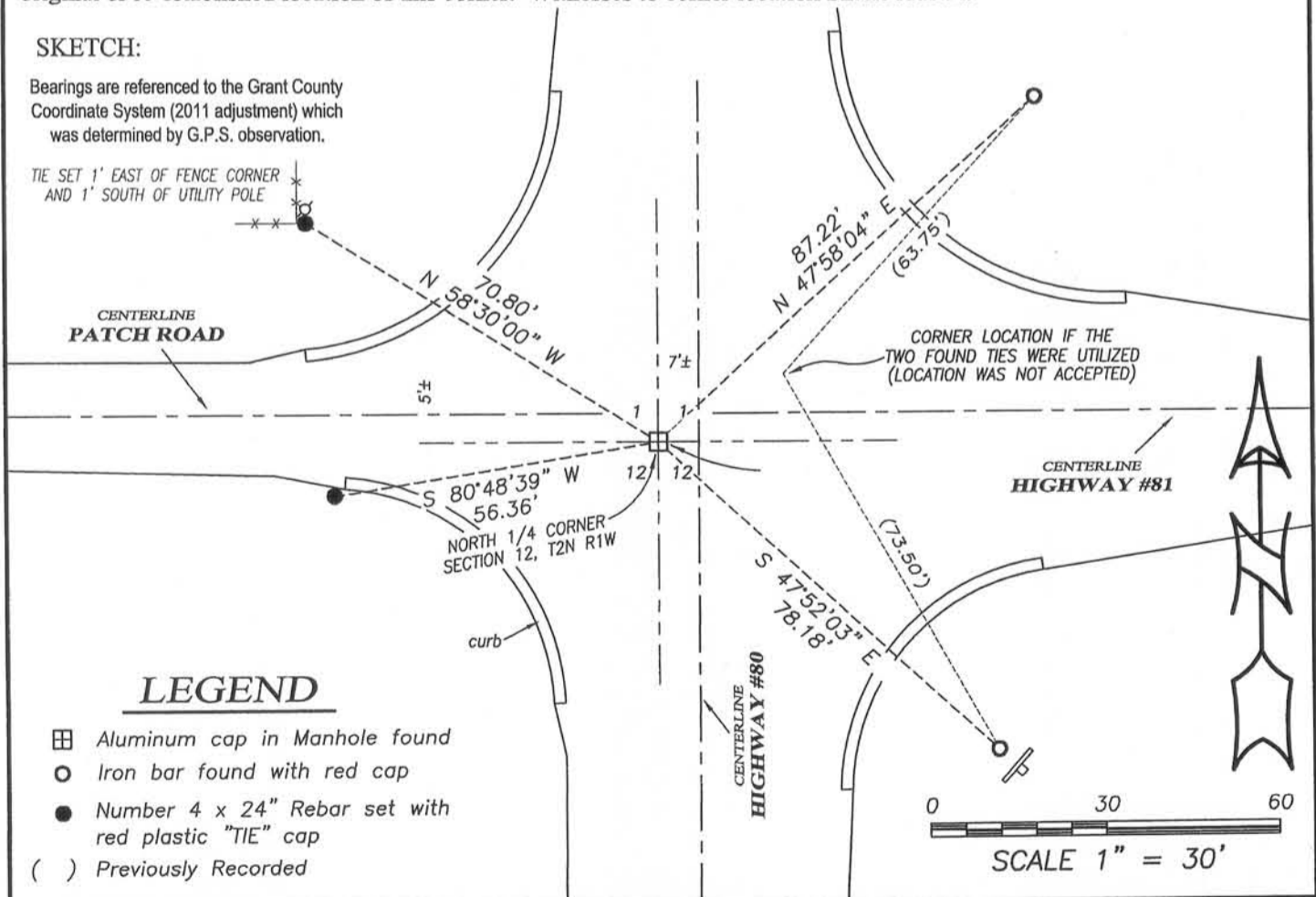
I found and accepted an Aluminum Cap in a Manhole which is placed in concrete. This location was verified with a survey filed in Book 30, Page 68. It should be noted that the two ties found do match the location as shown and dimensioned on the tie sheet of record or the highway plan. (See Diagram). I set two new ties and verified this location by G.P.S. observation.

DESCRIPTION OF CORNER AND WITNESS MONUMENTS, references and accessories used to perpetuate the original or re-established location of this corner. Witnesses to corner location Shane Austin.

SKETCH:

Bearings are referenced to the Grant County Coordinate System (2011 adjustment) which was determined by G.P.S. observation.

TIE SET 1' EAST OF FENCE CORNER AND 1' SOUTH OF UTILITY POLE



LEGEND

- ☒ Aluminum cap in Manhole found
- Iron bar found with red cap
- Number 4 x 24" Rebar set with red plastic "TIE" cap
- () Previously Recorded



Austin Engineering LLC
 austinengineeringllc.com

4211 HWY 81 E, LANCASTER, WI 53813
 PHONE: 608-723-6363 FAX: 608-723-6702

JOB NO: 13s192
 G:\13s192
 H:\TIE\T2NR1W\22

FIELDBOOK: TDSR
 DRAWN BY: AJ AUSTIN
 CREW: SW AUSTIN

RECORD OF U.S. PUBLIC LAND SURVEY CONTR. STATION

QUARTER SECTION CORNER $\frac{11}{12} | \frac{11}{12}$ TOWNSHIP 2 N, RANGE 1W X, GRANT COUNTY, WISCONSIN

GEODETTIC SURVEY BY: _____

STATE PLANE COORDINATES OF: _____
 NORTH _____
 EAST _____

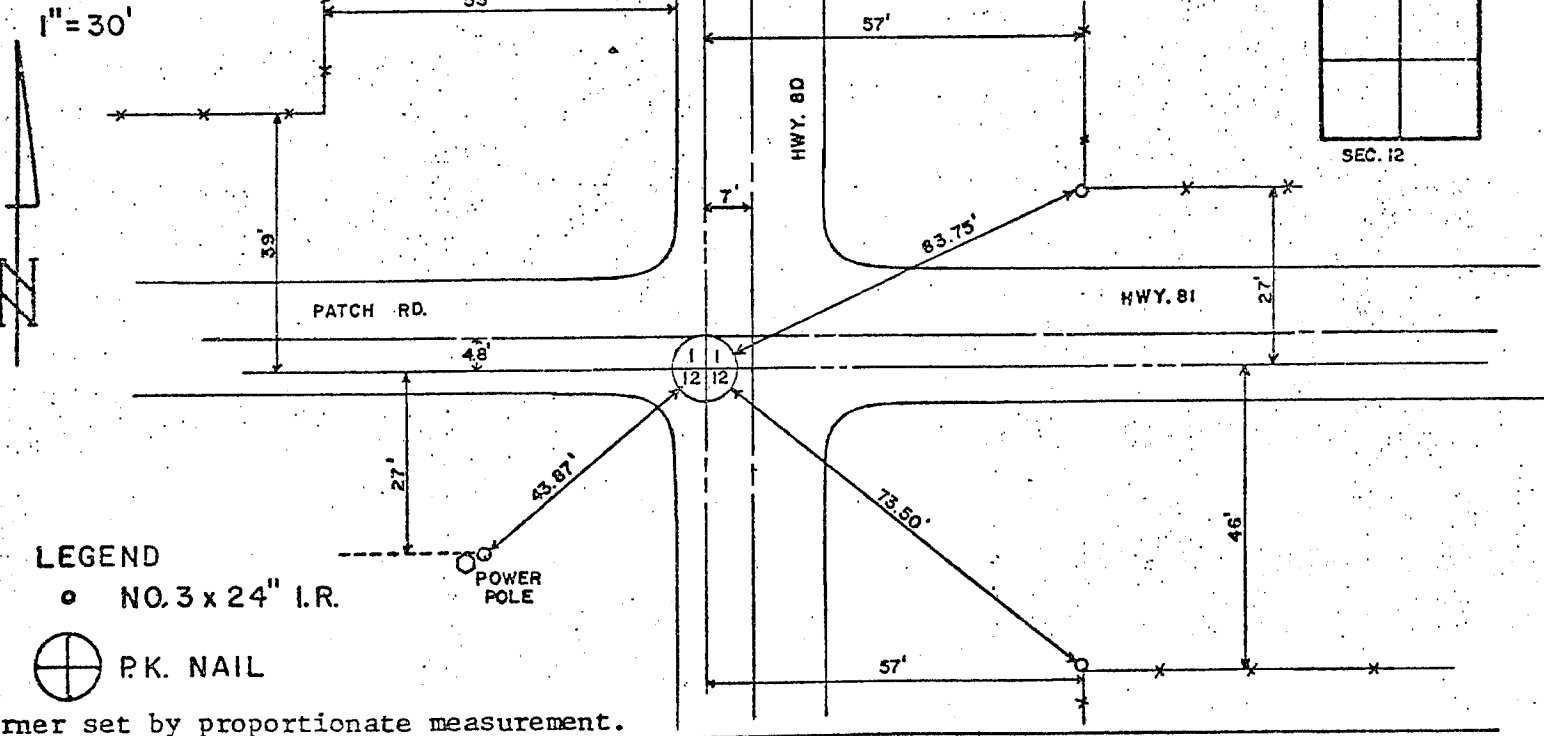
ELEVATION OF STATION: _____ THETA ANGLE: _____

HORIZONTAL DATUM: WISCONSIN STATE PLANE COORDINATE SYSTEM, SOUTH ZONE

VERTICAL DATUM: MEAN SEA LEVEL, 1929 ADJUSTMENT

HORIZONTAL & VERTICAL CONTROL ACCURACY: SECOND ORDER

LOCATION SKETCH:



SURVEYOR'S AFFIDAVIT:

STATE OF WISCONSIN)
 Green COUNTY) SS

I HEREBY CERTIFY THAT I, Richard D. Talarczyk, have complied with the Wisconsin Statutes, Statutes of the United States, and the rules and regulations made by the Secretary of the interior in the location of the corner shown above.

DATE OF SURVEY: 7-23-73 to 11-21-73 *Richard D. Talarczyk*



RECORD OF U.S. PUBLIC LAND SURVEY CONTROL STATION

QUARTER SECTION CORNER $\frac{11}{12|12}$ TOWNSHIP 2 N, RANGE 1W X, GRANT COUNTY, WISCONSIN

GEODETTIC SURVEY BY: _____

STATE PLANE COORDINATES OF: _____
 NORTH _____
 EAST _____

ELEVATION OF STATION: _____ THETA ANGLE: _____

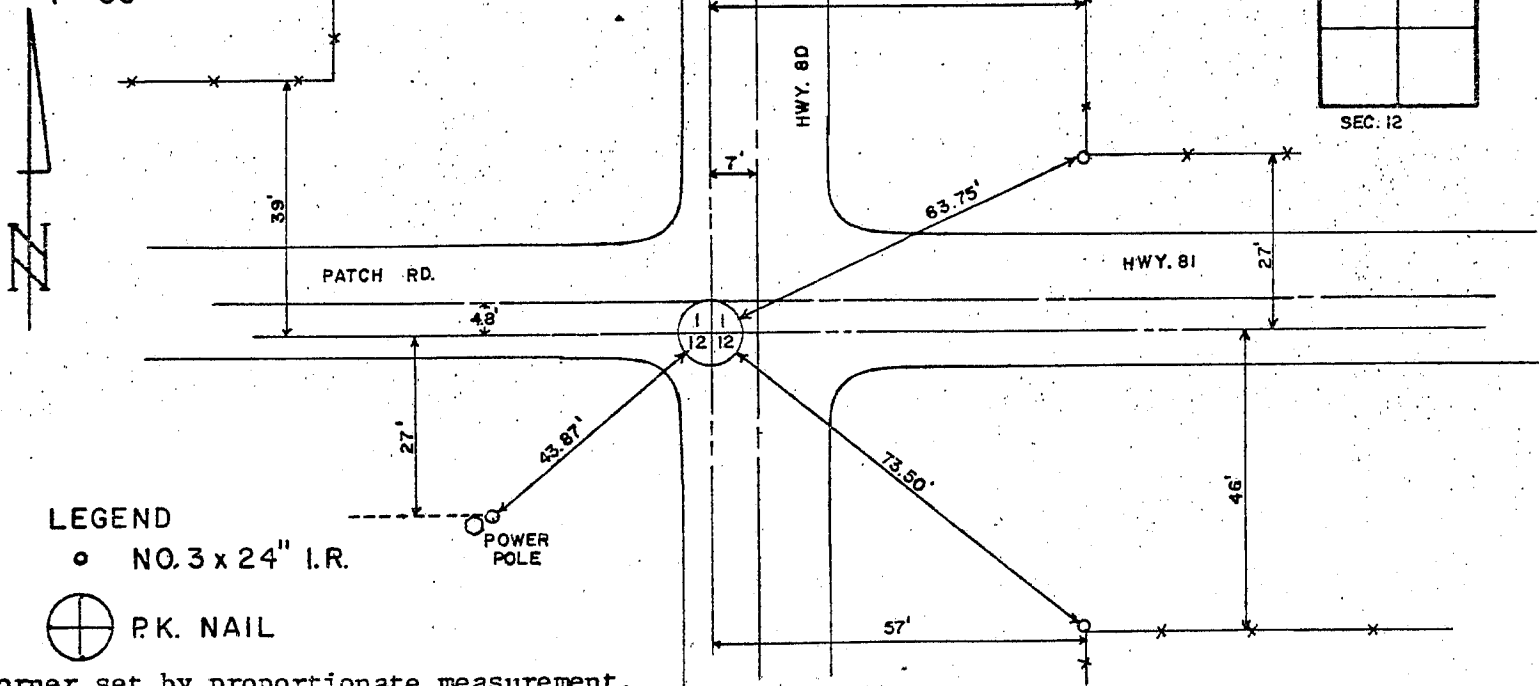
HORIZONTAL DATUM: WISCONSIN STATE PLANE COORDINATE SYSTEM, SOUTH ZONE

VERTICAL DATUM: MEAN SEA LEVEL, 1929 ADJUSTMENT

HORIZONTAL & VERTICAL CONTROL ACCURACY: SECOND ORDER

LOCATION SKETCH:

1" = 30'



LEGEND

o NO. 3 x 24" I.R.

⊕ P.K. NAIL

Corner set by proportionate measurement.

SURVEYOR'S AFFIDAVIT:

STATE OF WISCONSIN)
Green COUNTY) SS

I HEREBY CERTIFY THAT I, Richard D. Talarczyk, have complied with the Wisconsin Statutes, Statutes of the United States, and the rules and regulations made by the Secretary of the interior in the location of the corner shown above.

DATE OF SURVEY: 7-23-73 to 11-21-73

Richard D. Talarczyk

