

21021

# U.S. PUBLIC LAND SURVEY MONUMENT RECORD - GRANT COUNTY, WI

Section 12, Town 2 North Range 1 West, Town of Smelser (a)

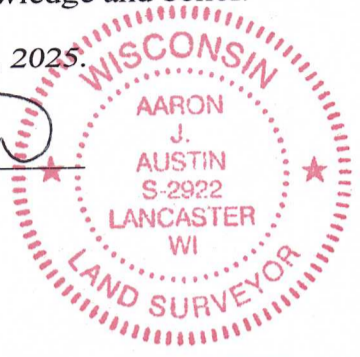
NOTE: This form is intended and designed to fulfill all requirements of the Wisconsin Administrative Code Chapter A-E 7.08, U.S. Public Land Survey Monument Record (3) (a) (b) (c) (d) (e) (f) (g) (h) (i).

### CERTIFICATE: (i)

I, Aaron J. Austin, Wisconsin Professional Land Surveyor, do hereby certify that the corner location on this record was determined by me and/or under my direct supervision and that this U.S. Public Land Survey Monument Record is correct and complete to the best of my knowledge and belief.

Dated this 30th day of October, 2025.

*Aaron J. Austin*  
Aaron J. Austin, PLS-2922



⊕ = CORNER LOCATION

Grant County Coordinates:  
NAD 83 (2011)  
Northing: 458,035.22  
Easting: 895,633.04

### HISTORY OF CORNER ESTABLISHMENT:

Original corner was set in 1832 by Lucius Lyon.  
Richard Talarczyk shows a P.K. Nail and prepared a Survey Monument Record dated 11-21-1973.  
Ryland Benzing set a Mag Nail with a Washer and prepared a Survey Monument Record dated 9-16-2017.

### DESCRIPTION OF CORNER EVIDENCE FOUND: (b) (f) (g) (h)

I found the Mag Nail Benzing set. I established four witness corner after I verified the Monument's location with G.P.S. and E.D.M. methods.

### DESCRIPTION OF CORNER AND WITNESS MONUMENTS, references and accessories used to perpetuate the original or re-established location of this corner: (c) (d) (e)

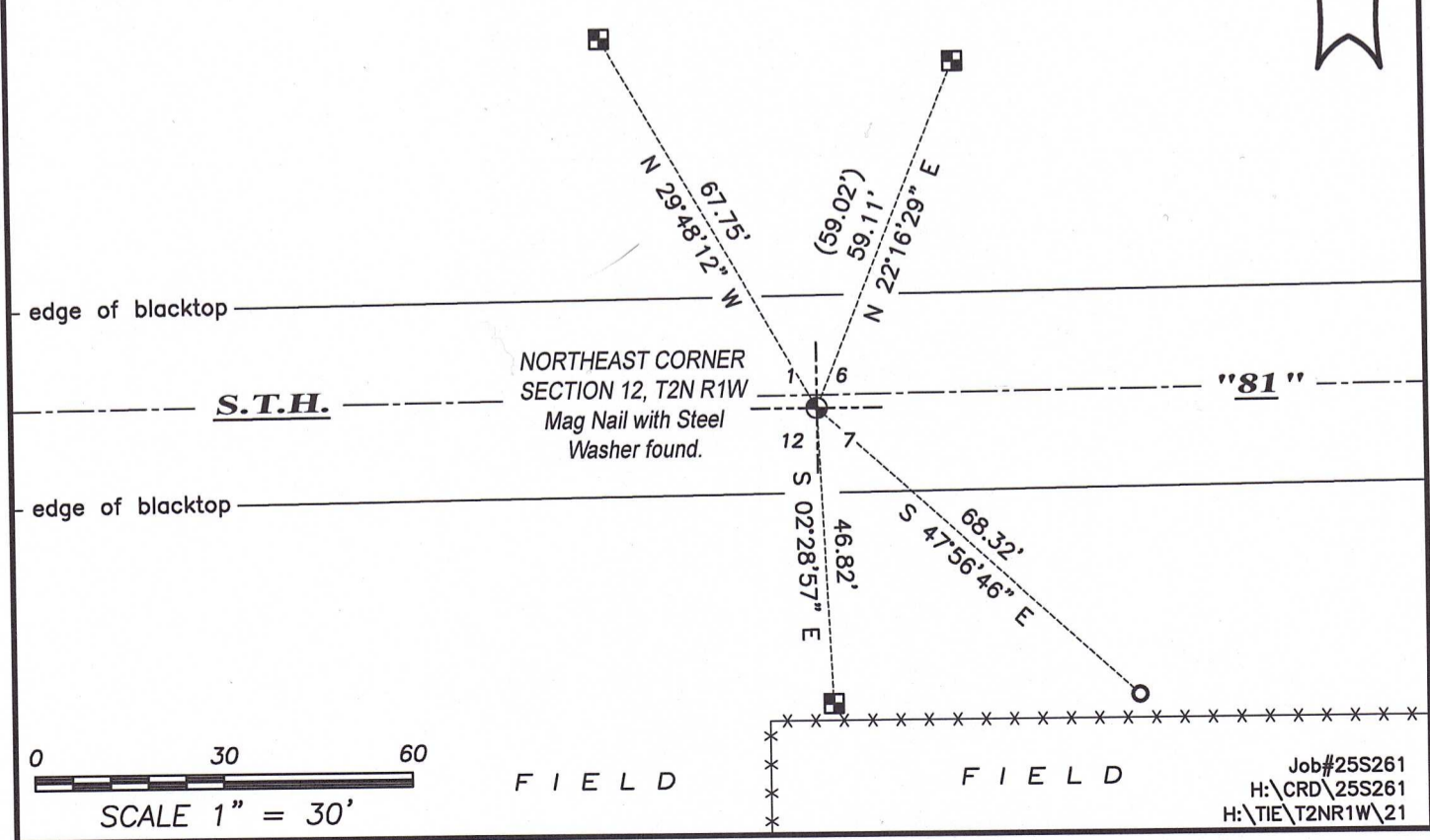
Witnesses to corner location Shane Austin, Tanner Austin.  
Drawn by: Owen Austin.

SKETCH:

## LEGEND

- ⊕ Section Corner—as designated
- 3/4" rebar found
- ⊠ WIDOT Aluminum Capped Reference Monument found
- ( ) Recorded as
- x-x-x- Existing fence
- - - - - Centerline

FIELD



Job#25S261  
H:\CRD\25S261  
H:\TIE\T2NR1W\21

