

U.S. PUBLIC LAND SURVEY MONUMENT RECORD - GRANT COUNTY, WI

Section 3, Town 2 North Range 1 West, Town of Smelser (a)

NOTE: This form is intended and designed to fulfill all requirements of the Wisconsin Administrative Code Chapter A-E 7.08, U.S. Public Land Survey Monument Record (3) (a) (b) (c) (d) (e) (f) (g) (h) (i).

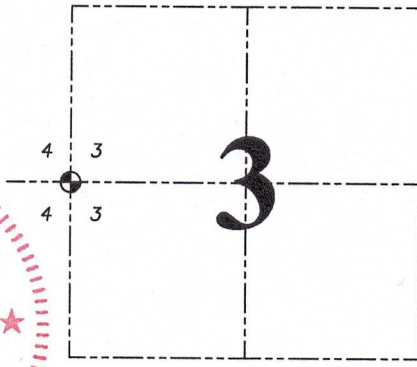
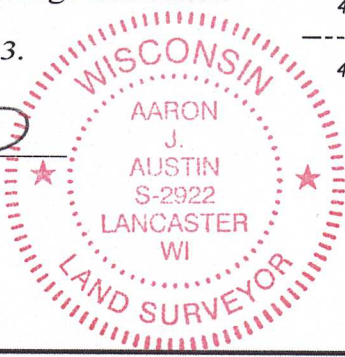
CERTIFICATE: (i)

I, Aaron J. Austin, Wisconsin Professional Land Surveyor, do hereby certify that the corner location on this record was determined by me and/or under my direct supervision and that this U.S. Public Land Survey Monument Record is correct and complete to the best of my knowledge and belief.

Dated this 26th day of June, 2023.

Aaron J. Austin

Aaron J. Austin, S-2922



● = CORNER LOCATION

Grant County Coordinates:
NAD 83 (2011)
Northing: 460,673.13
Easting: 879,756.61

HISTORY OF CORNER ESTABLISHMENT:

Original corner was set in 1832 by Lucius Lyon.
Larry Austin set a 3/4" Rebar with a Grant County Cap and prepared a Survey Monument Record dated 5-7-1996.

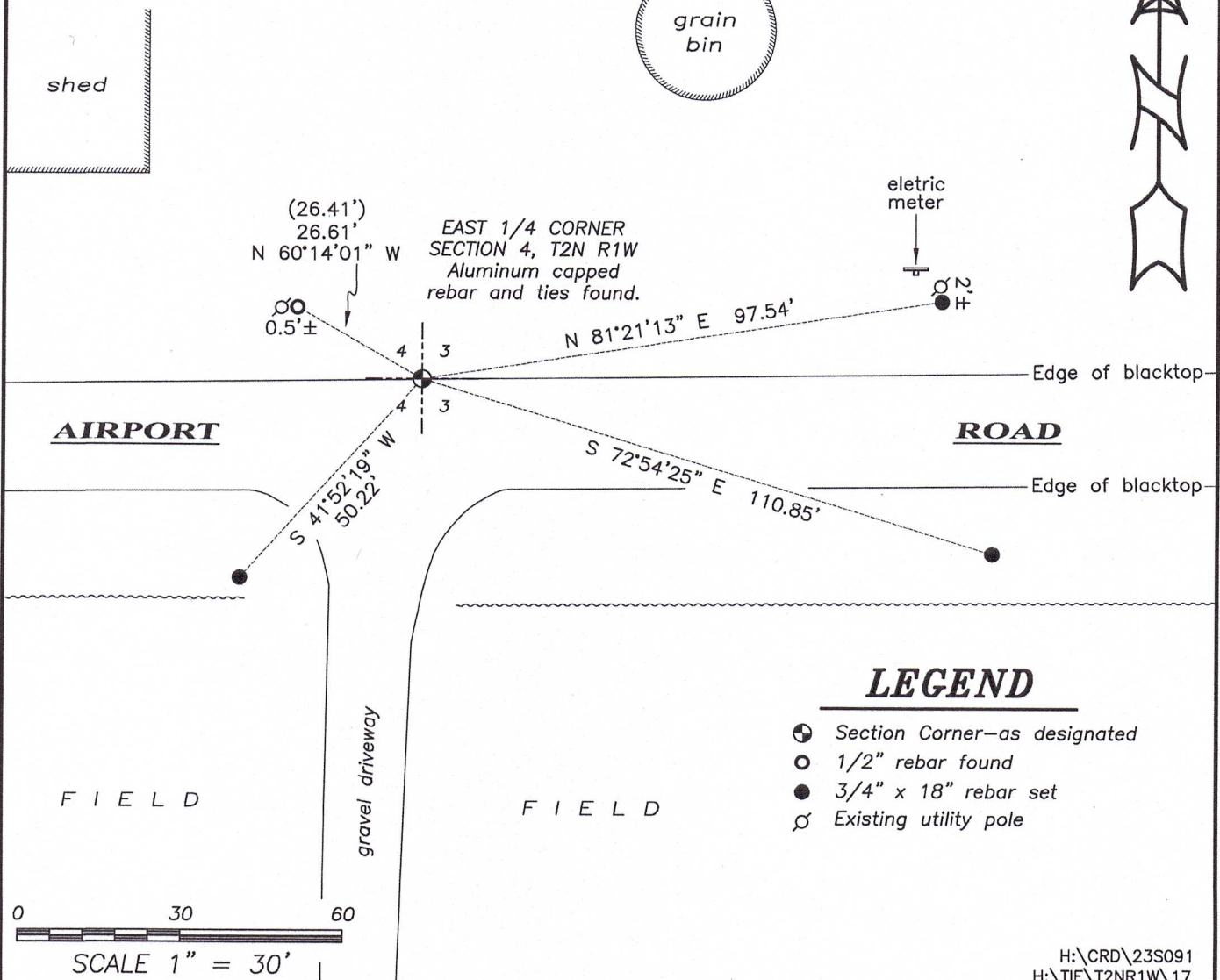
DESCRIPTION OF CORNER EVIDENCE FOUND: (b) (f) (g) (h)

I found the Aluminum Capped Rebar and one witness corner Larry set. I set three additional witness corners after I verified the Monument's location with G.P.S. and E.D.M. methods.

DESCRIPTION OF CORNER AND WITNESS MONUMENTS: references and accessories used to perpetuate the original or re-established location of this corner. (c) (d) (e)

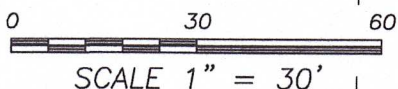
Witnesses to corner location Shane Austin, Owen Austin, Tanner Austin.
Drawn by: Owen Austin.

SKETCH:



LEGEND

- Section Corner—as designated
- 1/2" rebar found
- 3/4" x 18" rebar set
- ⊕ Existing utility pole



GRANT COUNTY

Survey Monument Record

TYPE OF MONUMENT 3/4" x 24" IRON ROD SET

STATE PLANE COORDINATES: N W/ CAP.
E _____

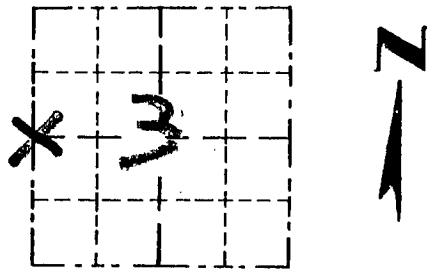
ELEVATION — M.S.L. DATUM: _____

THETA ANGLE: _____

FIELD BOOK: 96-04

PAGE _____

CORNER NO. 17
SECTION 3
TOWN 2N
RANGE 1W



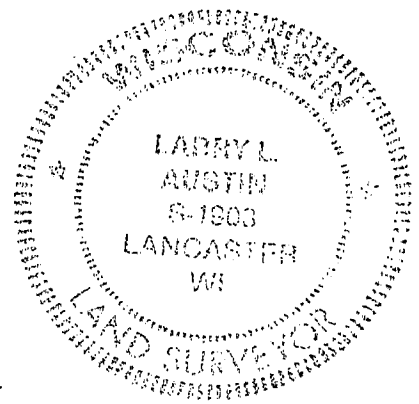
LOCATION
(Indicated by "X")

BASIS FOR MONUMENT LOCATION

(Use reverse side if necessary)

ORIGINAL CORNER SET IN 1832 BY LUCIUS LYON. I SET THE CORNER ON LINE BETWEEN NW CORNER & THE SW CORNER OF SEC 2 & AT AN OCCUPIED LOCATION N-S. (THE TOWNSHIP ROAD HAS A BOW IN IT IN THIS AREA.) THIS LOCATION FITS BETTER THAN USING PROPORTIONING N-S.

SEAL:



CERTIFIED CORRECT

Larry L. Austin
Registered Land Surveyor

DATE: 5-7-96

TIE SKETCH

Show at least three (3) ties and monument

LEGEND

- ⊕ 3/4" x 24" IRON BAR SET W/ CAP
- 1/2" x 15" IRON BAR SET
- xx EXISTING FENCE
- ⊖ POWER POLE

