

GRANT COUNTY

Section Summary

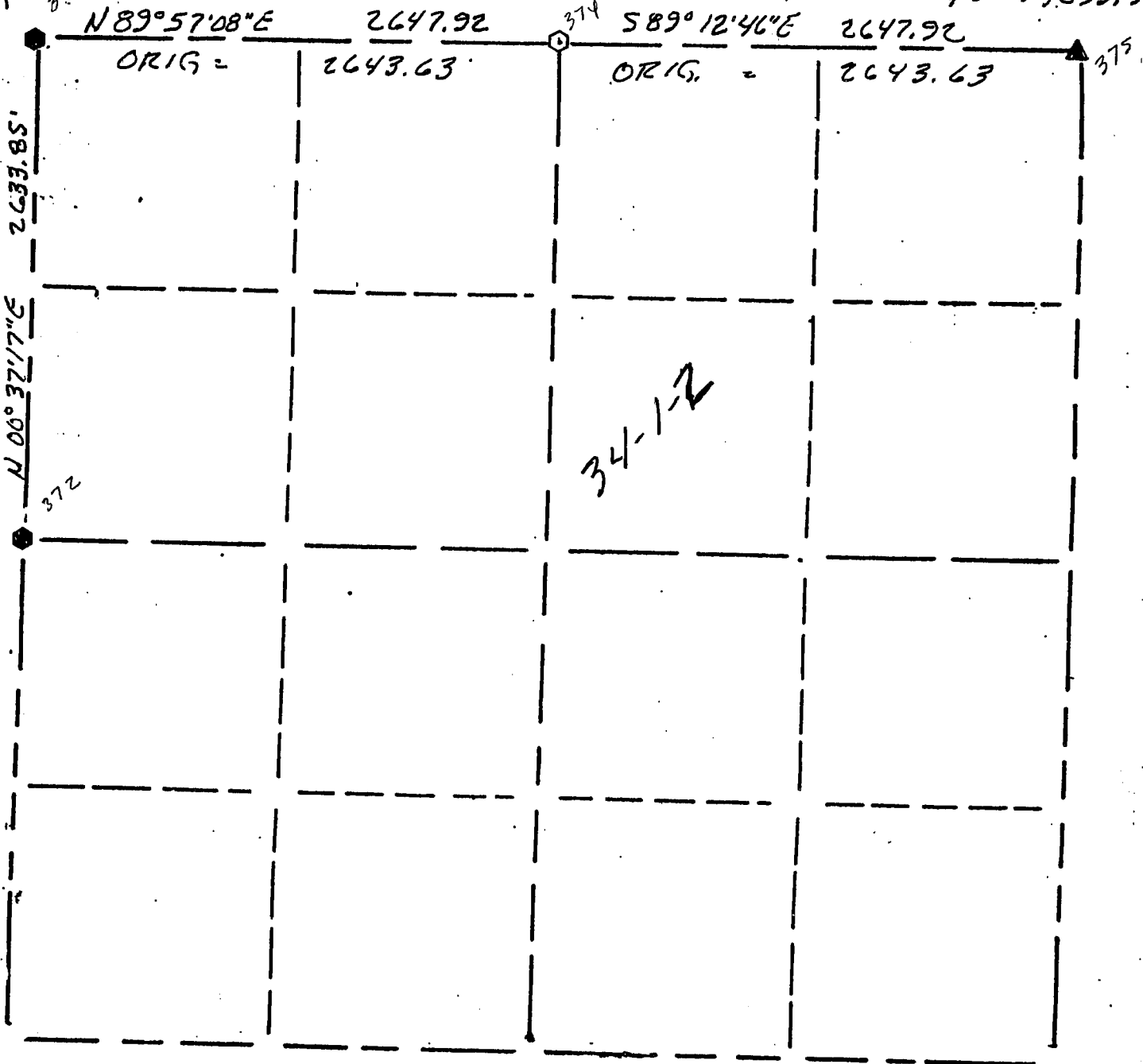
34 - 1 N - 2 W
SECTION TOWN RANGE

X = 1,837,389.04
Y = 191,067.71

X = 1,840,088.84
Y = 191,069.92

X = 1,842,684.39
Y = 191,033.54

X = 1,837,360.48
Y = 188,434.13



Grid coordinates computed from information supplied by DOT survey along Hwy. 11 in 1990; the ground distances shown would be multiplied by a combination factor of .999955;

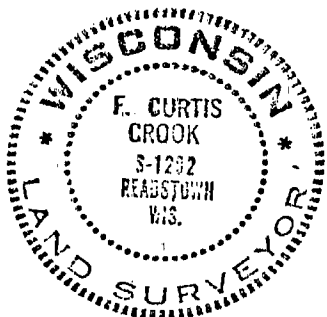
LEGEND

- ▲ COUNTY MONUMENT FOUND
- STONE OR CONCRETE MONUMENT
- ⊙ OTHER (specify) 2" X 30"
Aluminum Monument W/ DOT Cap SET
- DOT Aluminum Monument Found

NOTE:

Relationships of all section corners to other section corners shall be shown hereon by bearing and distance or grid coordinates

Show or describe bearing reference (see above)



Surveyed Jan - Feb 1991

F. Curtis Crook 3-8-96

F. Curtis Crook RLS #1292