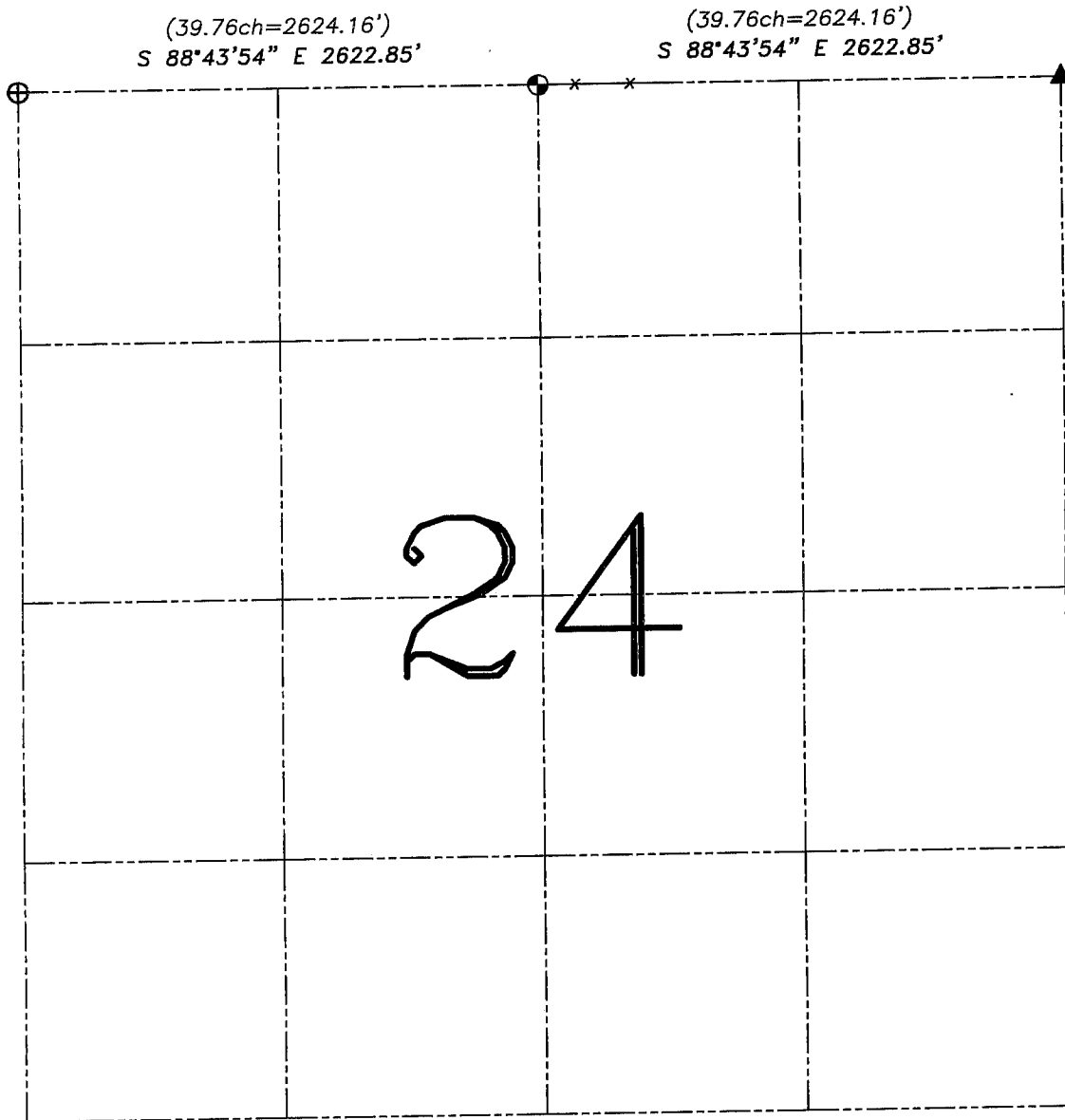


U.S. PUBLIC LAND SURVEY MONUMENT RECORD – GRANT COUNTY, WI

Summary of Section 24, Town 1 North, Range 2 West, Town of Jamestown

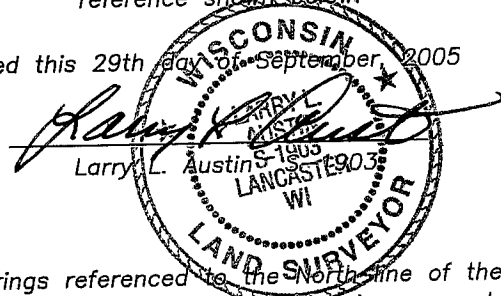


LEGEND

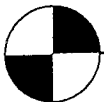
- ⊕ No. 8 rebar found with Grant County Aluminum Cap
- ⊙ No. 8 x 30" rebar set with Grant County Aluminum Cap – wt=2.67#/l.f.
- ▲ 2" diameter iron pipe found
- () Recorded as
- x— Approximate location of existing fence

Relationship of all section corners to other section corners shall be shown hereon by bearing and distance or grid coordinates. Bearing reference shown below.

Dated this 29th day of September, 2005



Bearings referenced to the North line of the NW 1/4 of this Section, which is assumed to bear S 88°43'54" E.



Austin Engineering LLC

4211 HWY 81 E, LANCASTER, WI 53813
PHONE 608-723-6363 FAX 608-723-6702

JOB NUMBER: 05S233
FIELDBOOK: TDSR, 2510
G:\T1NR2W\13A
H:\TIE\T1NR2W\24SUM

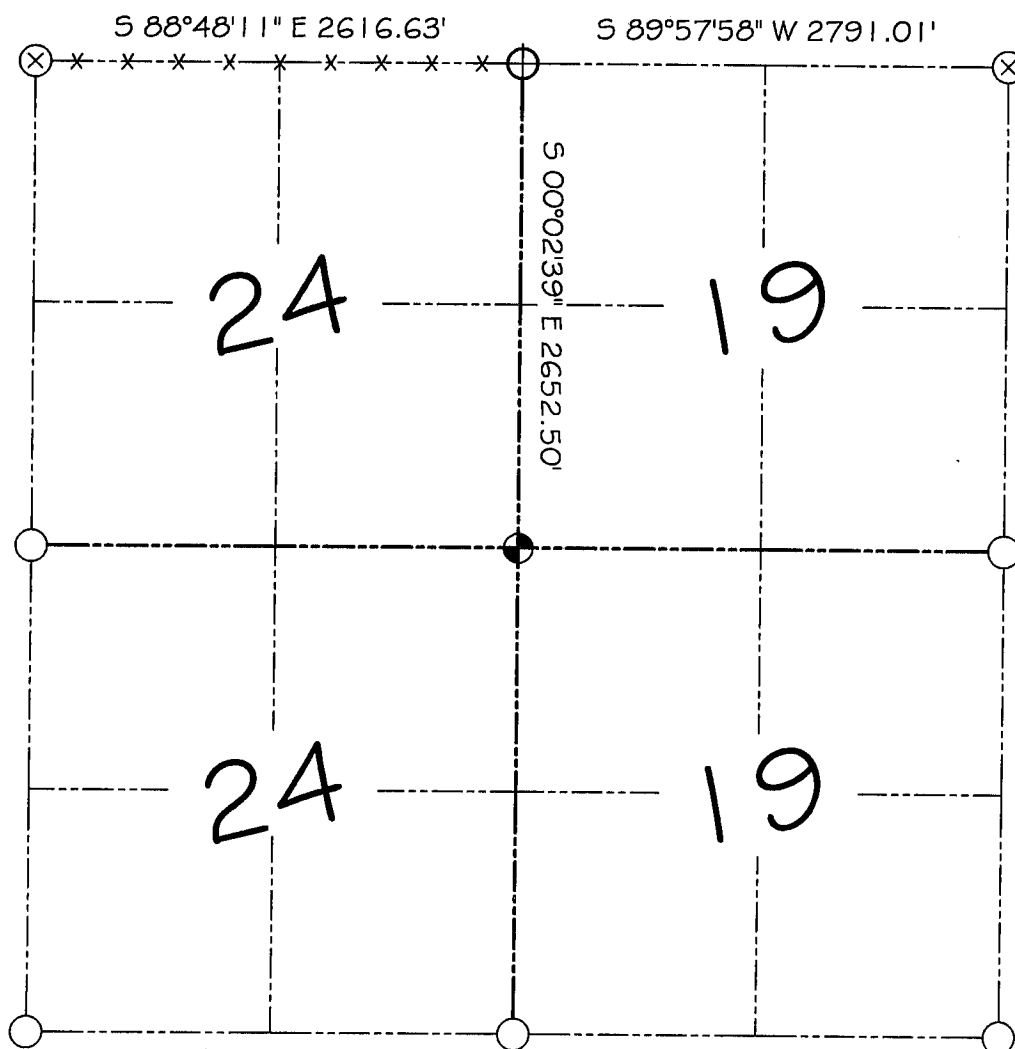
DRAWN BY: SW AUSTIN
APPROVED: LL AUSTIN

SKETCH NOT TO SCALE





GRANT COUNTY

SECTION SUMMARY

$\frac{24}{SECTION} - \frac{1N}{TOWN} - \frac{2W}{RANGE}$



LEGEND

-  EXISTING 2" WISCONSIN DOT ALUMINUM MONUMENT
-  2" IRON PIPE FOUND
-  ALUMINUM MONUMENT FOUND
-  P.K. NAIL FOUND

NOTE:

Relationships of all section corners to other section corners shall be shown hereon by bearing and distance or grid coordinates
 Show or describe bearing reference



BEARINGS REFERENCED TO THE EAST LINE OF THE
 NORTHEAST 1/4 SECTION 24, WHICH IS ASSUMED TO BEAR S 00°02'39" E.