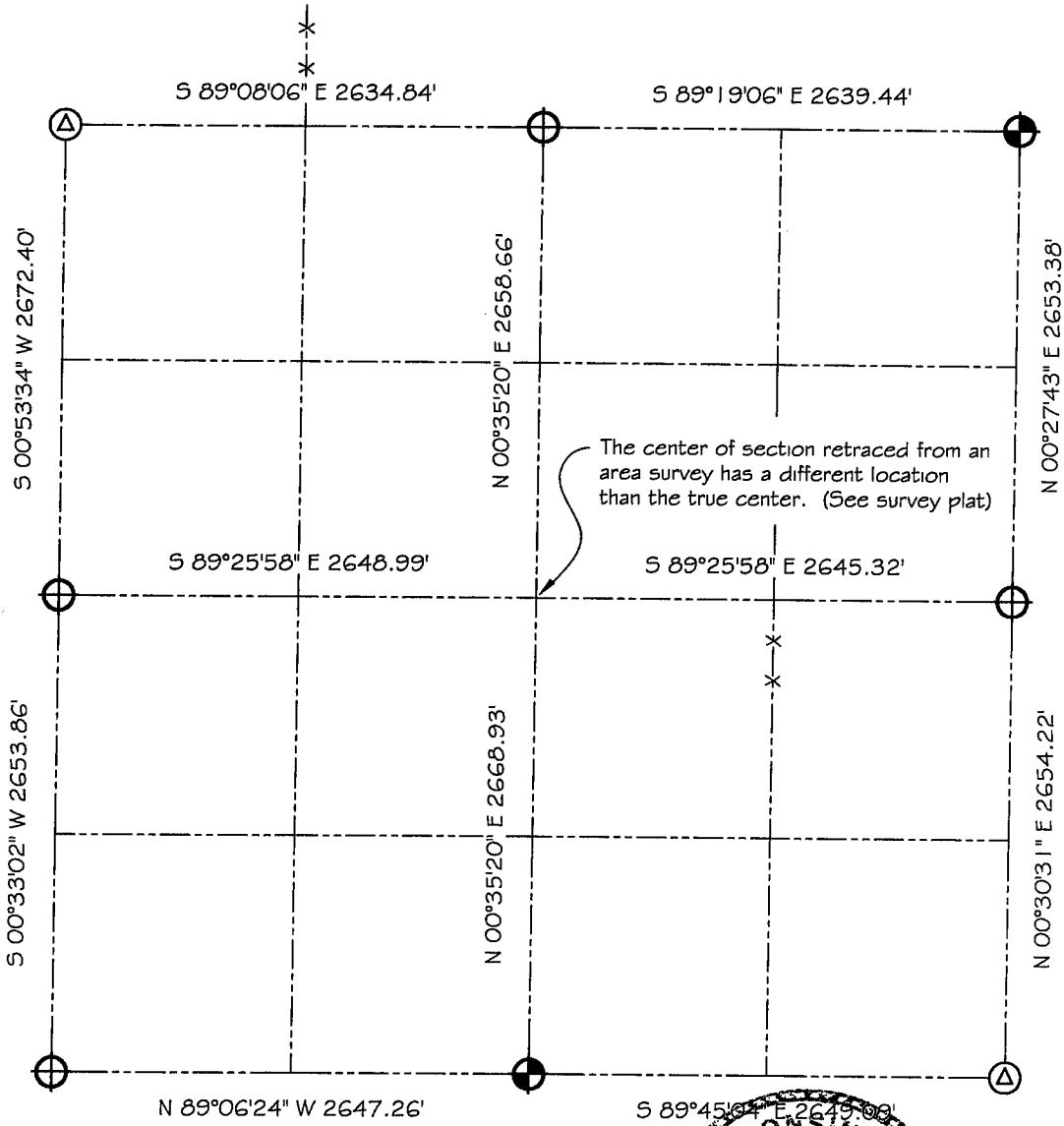





MAR 24 2000

# GRANT COUNTY SECTION SUMMARY

23 - 1N - 2W  
SECTION TOWN RANGE



### LEGEND

-  NO. 8 X 30" REBAR SET WITH GRANT COUNTY ALUMINUM CAP
-  NO. 6 REBAR FOUND
-  1" IRON PIPE FOUND

### NOTE:

Relationships of all section corners to other section corners shall be shown hereon by bearing and distance or grid coordinates  
Show or describe bearing reference



Bearings referenced to the East-West 1/4 Line of Section 23 which is assumed to bear N 89°25'58" W.