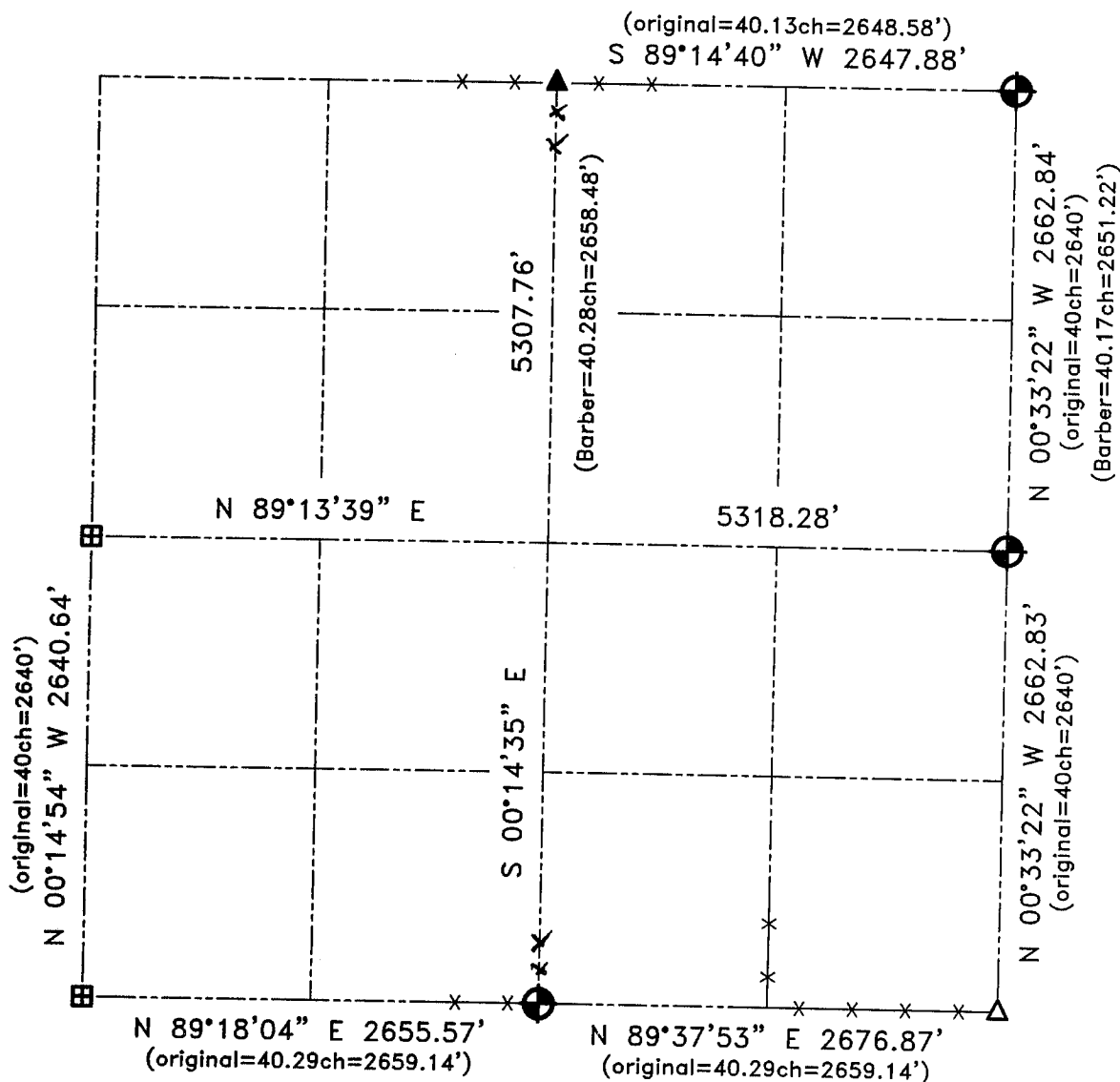




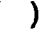



GRANT COUNTY SECTION SUMMARY

15 - 1N - 2W
SECTION TOWN RANGE



LEGEND

-  Number 8 x 30" rebar set with Grant County Aluminum Cap
-  Cast aluminum monument found
-  1" Iron pipe found
-  2" Iron pipe found
-  Recorded as
-  Appx existing fence location



Relationships of all section corners to other section corners shall be shown hereon by bearing and distance or grid coordinates.
~ Bearing reference below ~



Bearings referenced to the East-West Quarter line of Section 15, which is assumed to bear N 89°13'39" E.

AUSTIN ENGINEERING, LLC
4211 HWY 81 E, LANCASTER, WI 53813
PHONE 608-723-6363 FAX 608-723-6702

FIELDBOOK: SDR33, 2030
G:\T1NR2W\16
G:\SWA\TIE\T1NR2W\15SUM

DRAWN BY: SW AUSTIN
APPROVED: LL AUSTIN
CREW: BS-SB-SA-TF
SHEET 1 OF 1