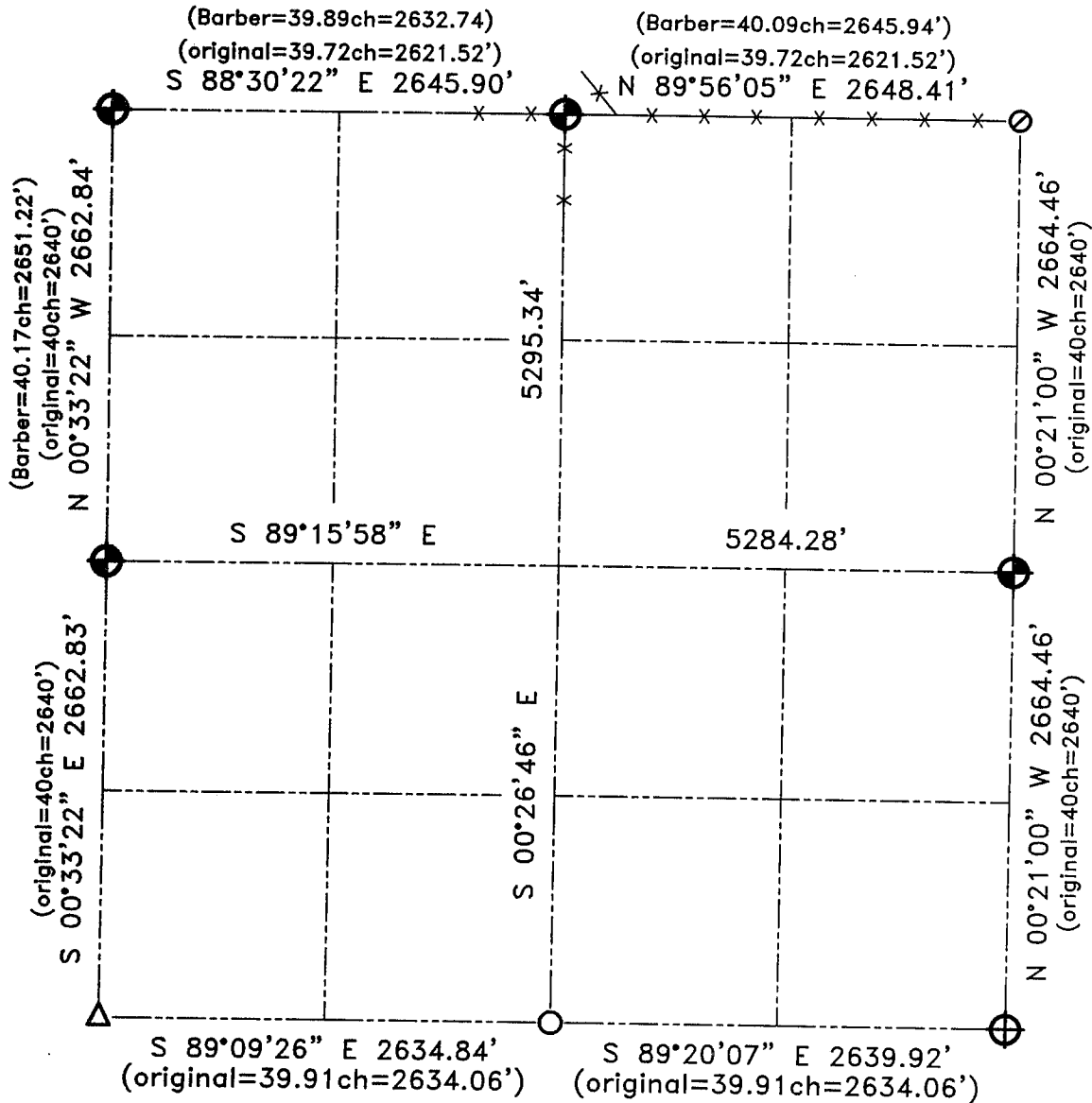


# GRANT COUNTY SECTION SUMMARY

14 - 1N - 2W  
SECTION      TOWN      RANGE



### LEGEND

- Number 8 x 30" rebar set with Grant County Aluminum Cap
- Number 8 rebar found
- Number 6 rebar found
- Number 5 rebar found
- 1" Iron pipe found
- Recorded as
- Appx existing fence location



Relationships of all section corners to other section corners shall be shown hereon by bearing and distance or grid coordinates.  
~ Bearing reference below ~



Bearings referenced to the East-West 1/4 line of  
Section 14, which is assumed to bear S 89°15'58" E.

**AUSTIN ENGINEERING, LLC**  
4211 HWY 81 E, LANCASTER, WI 53813  
PHONE 608-723-6363 FAX 608-723-6702

FIELDBOOK: SDR33, 2030  
G:\T1NR2W\16  
G:\SWA\TIE\T1NR2W\14SUM

DRAWN BY: SW AUSTIN  
APPROVED: LL AUSTIN  
CREW: BS-SB-SA-TF  
SHEET 1 OF 1