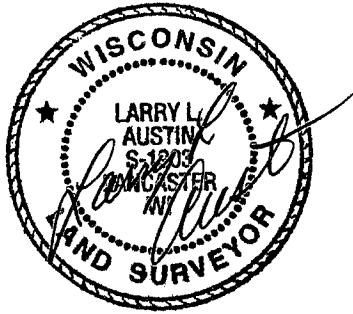
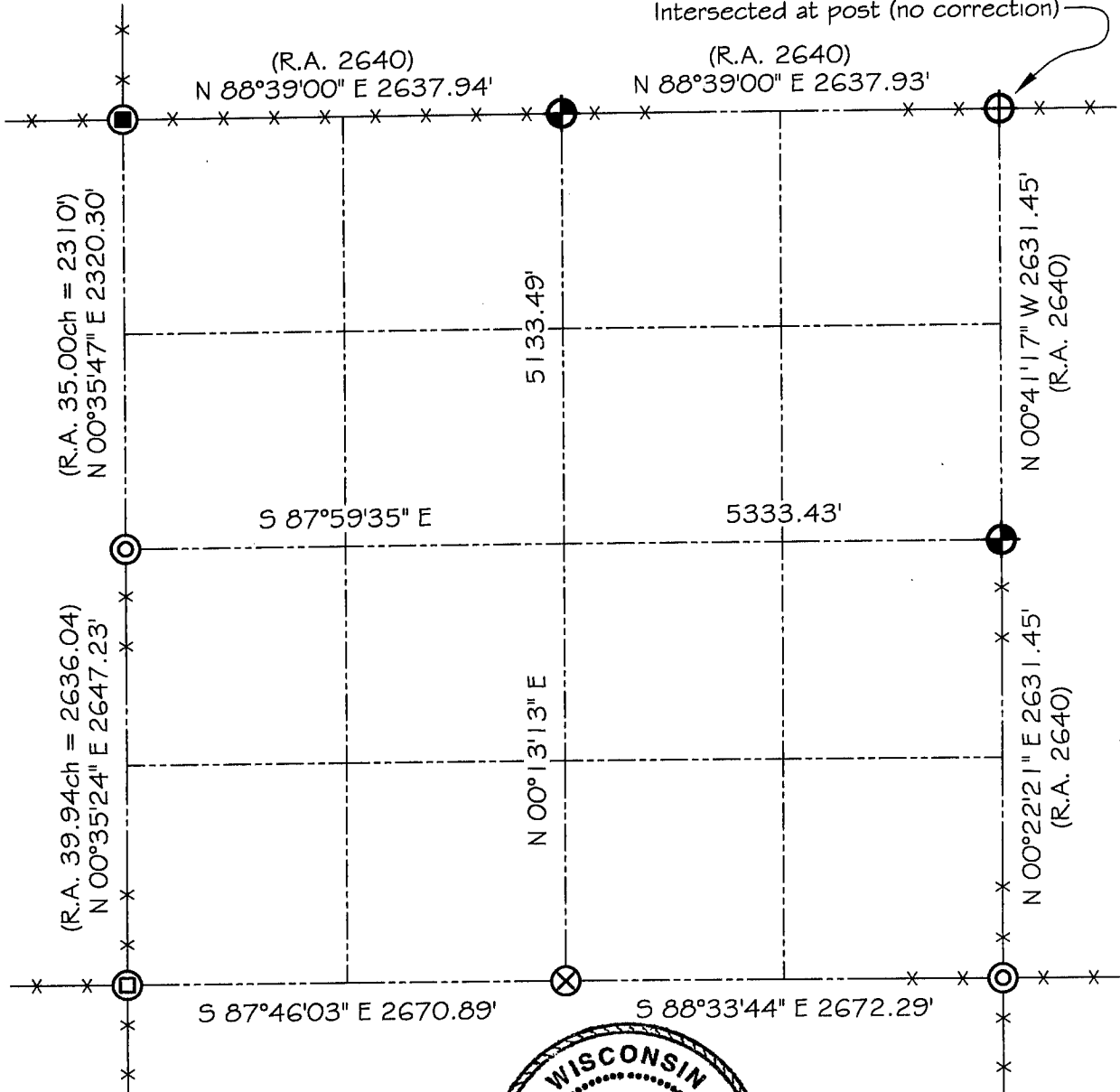


# GRANT COUNTY

## SECTION SUMMARY

1
-
1N
-
2W  
**SECTION TOWN RANGE**

Intersected at post (no correction)



### LEGEND

- NO. 8 X 30" REBAR SET WITH GRANT COUNTY ALUMINUM CAP
- NO. 8 X 30" REBAR FOUND WITH GRANT COUNTY ALUMINUM CAP
- ALUMINUM MONUMENT FOUND
- STONE FOUND
- NO. 6 REBAR FOUND
- ROCK REPLACED WITH NO. 8 X 30" REBAR WITH GRANT COUNTY ALUMINUM CAP

### NOTE:

Relationships of all section corners to other section corners shall be shown hereon by bearing and distance or grid coordinates  
 Show or describe bearing reference



Bearings referenced to the East-West 1/4 line of Section 1, which is assumed to bear S 87°59'35" E.