

U.S. PUBLIC LAND SURVEY MONUMENT RECORD - GRANT COUNTY, WI

Section 35, Town 1 North Range 2 West, Town of Jamestown

CERTIFICATE:

I, Aaron J. Austin, do hereby certify that the corner location on this record was determined by me and/or under my direct supervision and that this U.S. Public Land Survey Monument Record is correct and complete to the best of my knowledge and belief.

Dated this 19th day of October, 2011.

Aaron J. Austin
 Aaron J. Austin, S-2922



HISTORY OF CORNER ESTABLISHMENT:

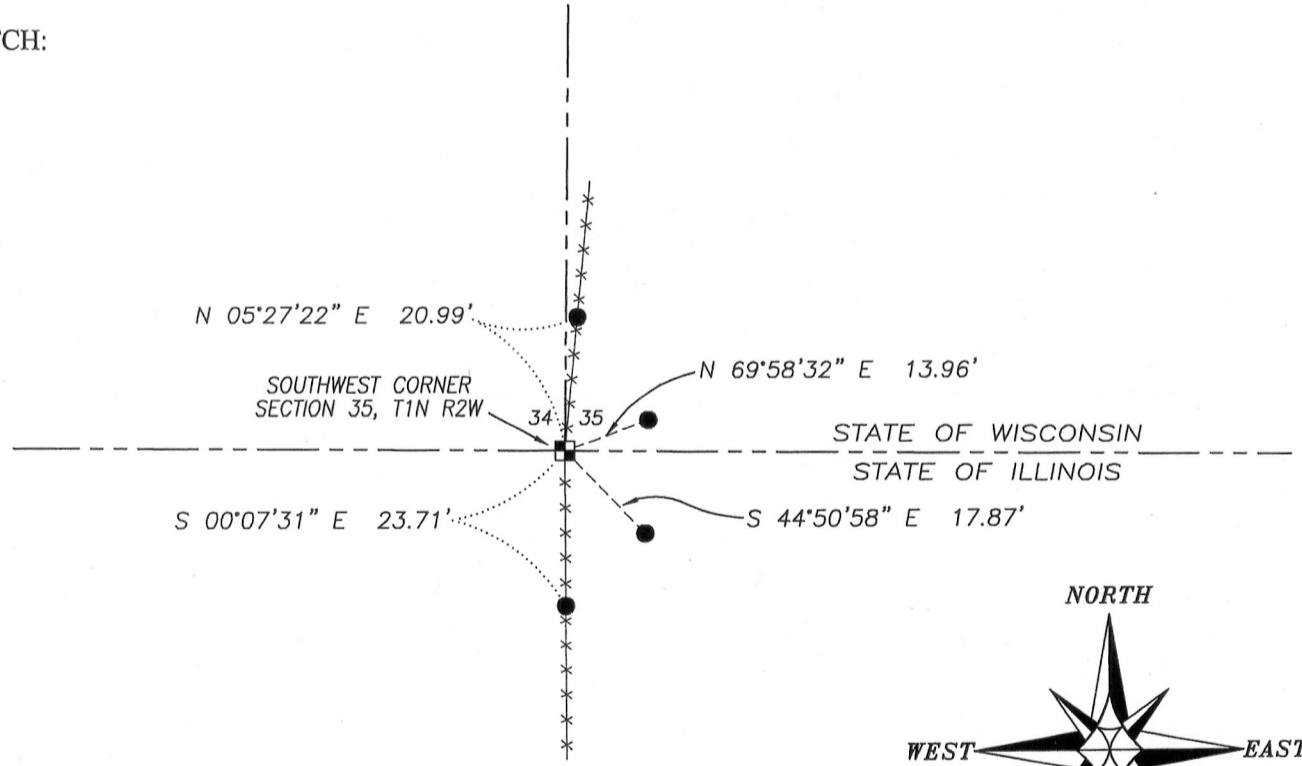
Corner was originally set by Lucius Lyon in January 1833. Bruce Bowden tied to the corner in March 1987. No other record was found of this corner.

DESCRIPTION OF CORNER EVIDENCE FOUND:

I found and accepted the corner established by Bruce Bowden. I verified this location by E.D.M. and G.P.S. methods.

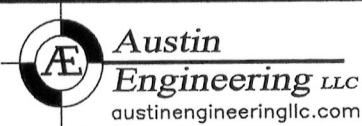
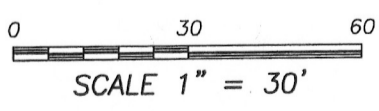
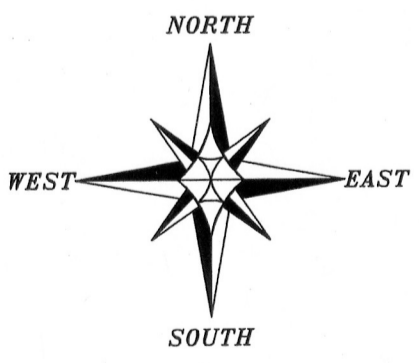
DESCRIPTION OF CORNER AND WITNESS MONUMENTS, references and accessories used to perpetuate the original or re-established location of this corner. Witnesses to corner location Bobby Sedgwick & Shelby Blindert

SKETCH:



LEGEND

- Grant County Aluminum Monument found
- Number 4 x 24" Rebar set with red plastic "TIE" cap



4211 HWY 81 E, LANCASTER, WI 53813
 PHONE: 608-723-6363 FAX: 608-723-6702

JOB NO: 11s209
 G:\T1NR1W\T1NR1W
 H:\TIE\T1NR2W\125

FIELDBOOK: TDSR
 DRAWN BY: AJ AUSTIN
 CREW: BS-SB

JAN 23 2012