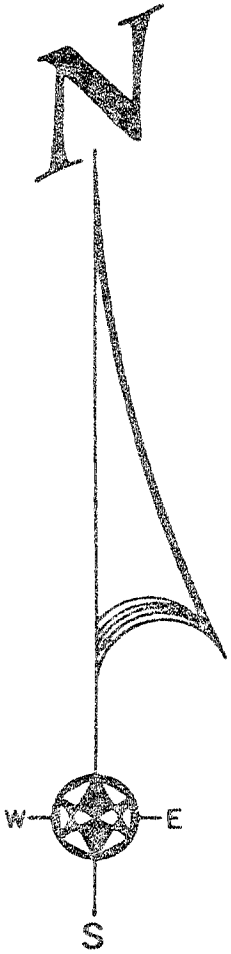


# SECTION CORNER TIES

107

*Jamestown*

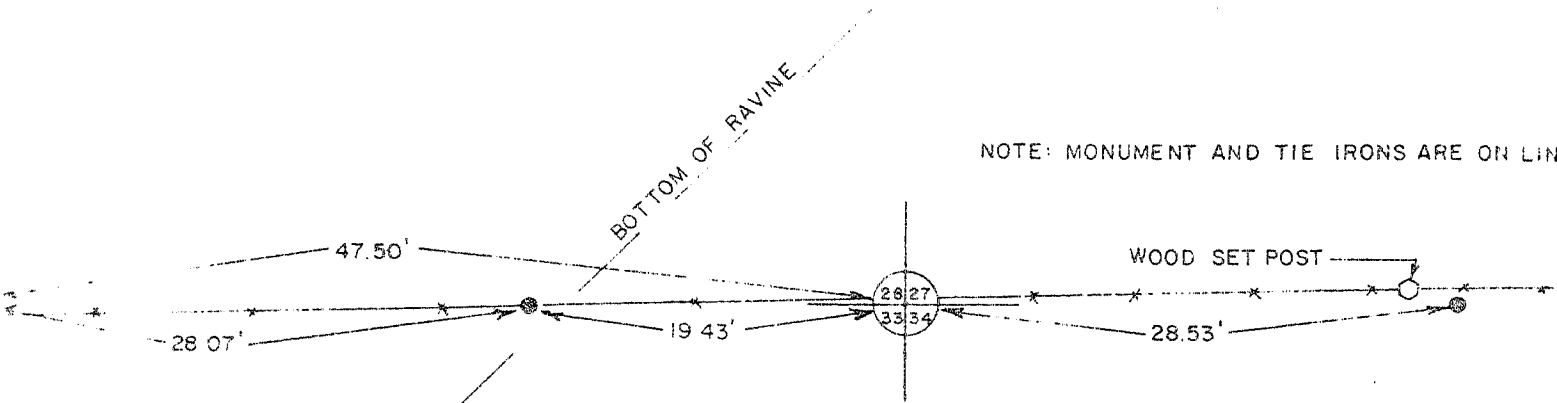
SECTION CORNER TIES - 110 E. DIVISION STREET, DODGEVILLE, WISCONSIN  
 SECTION CORNER TIES - 110 E. DIVISION STREET, DODGEVILLE, WISCONSIN  
 SECTION CORNER TIES - 110 E. DIVISION STREET, DODGEVILLE, WISCONSIN



SECTION CORNER TIES - 110 E. DIVISION STREET, DODGEVILLE, WISCONSIN  
 SECTION CORNER TIES - 110 E. DIVISION STREET, DODGEVILLE, WISCONSIN  
 SECTION CORNER TIES - 110 E. DIVISION STREET, DODGEVILLE, WISCONSIN



*D. E. [unclear]*

SECTION CORNER TIES - 110 E. DIVISION STREET, DODGEVILLE, WISCONSIN  
 SECTION CORNER TIES - 110 E. DIVISION STREET, DODGEVILLE, WISCONSIN  
 SECTION CORNER TIES - 110 E. DIVISION STREET, DODGEVILLE, WISCONSIN



NOTE: MONUMENT AND TIE IRONS ARE ON LINE

## LEGEND

-  4 x 30" ROUND CAST ALUMINUM MONUMENT (TOP AT GRADE)
-  3/4" x 24" IRON ROD

CORNER SET BY EXISTING PHYSICAL EVIDENCE AND DOUBLE PROPORTIONATE MEASUREMENT.

BOOK D-1 PAGE 47  
 JOB NO. D-78007  
 CHECKED RJM  
 DRAWN BY RJM

SCALE: 1" = 10'

**TALARCZYK & ASSOC., INC.**

110 E. Division Street  
 DODGEVILLE, WI 53533

Phone 608/935-5301

*PH 107*

# SECTION CORNER TIES

*Jameson*

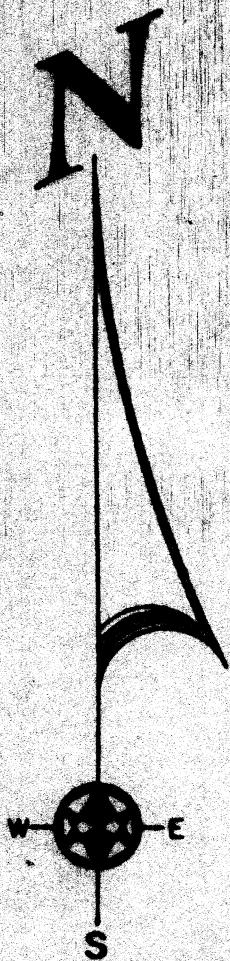
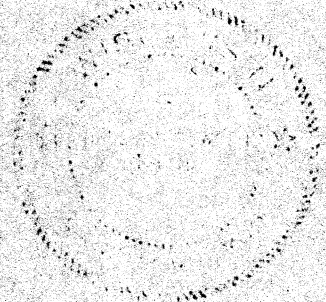
TO THE SOUTHEAST CORNER OF [REDACTED]  
 ONE NORTH, RANGE TWO WEST, OF THE FOURTH  
 PRINCIPAL MERIDIAN, WALES TOWN TOWNSHIP,  
 GRANT COUNTY, WISCONSIN.

I, Bruce D. Bowden, hereby certify that  
 I have complied with the Wisconsin Statutes,  
 The Statutes of the United States, and the  
 rules and regulations made by the Secretary  
 of the Interior, in the location of the corner  
 shown below.

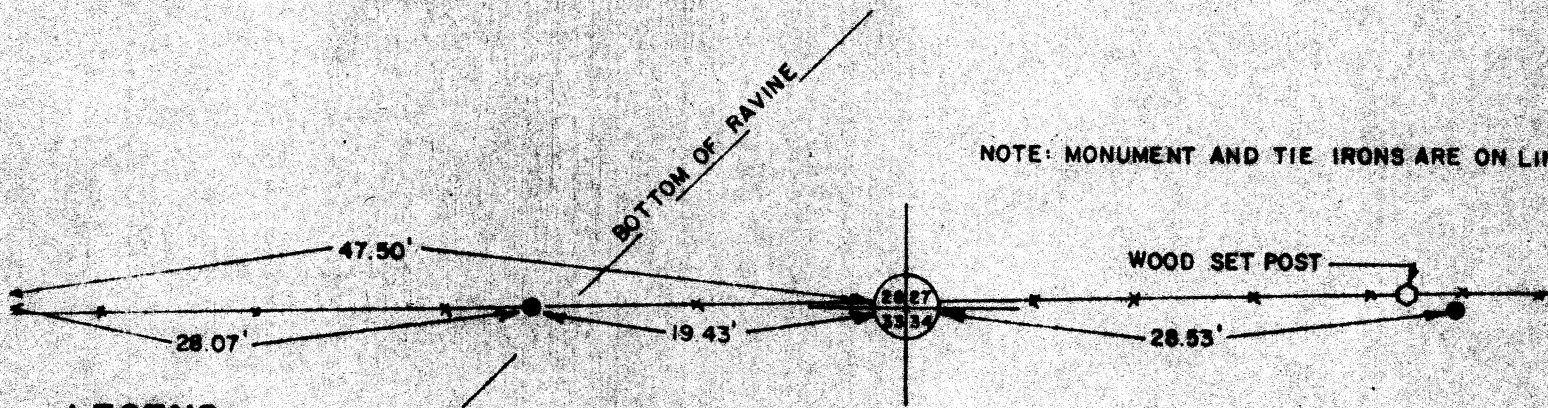
March 31, 1957

*Bruce D. Bowden*

Bruce D. Bowden 275-1250



STATE PLANE COORDINATES:  
 NORTH 191067.65  
 EAST 1537389.89



NOTE: MONUMENT AND TIE IRONS ARE ON LINE

## LEGEND



4' x 30" ROUND CAST ALUMINUM MONUMENT (TOP AT GRADE)



3/4" x 24" IRON ROD

CORNER SET BY EXISTING PHYSICAL  
 EVIDENCE AND DOUBLE PROPORTIONATE  
 MEASUREMENT.

BOOK D-1 PAGE 47  
 JOB NO. D-71007  
 CHECKED *KJM*  
 DRAWN BY *KJM*

SCALE: 1" = 10'

**TALARCZYK & ASSOC., INC.**

110 E. Division Street  
 DODGEVILLE, WI 53528

Phone 68/42-528