

U.S. PUBLIC LAND SURVEY MONUMENT RECORD - GRANT COUNTY, WI

Section 26, Town 1 North Range 2 West, Town of Jamestown (a)

NOTE: This form is intended and designed to fulfill all requirements of the Wisconsin Administrative Code Chapter A-E 7.08, U.S. Public Land Survey Monument Record (3) (a) (b) (c) (d) (e) (f) (g) (h) (i).

CERTIFICATE: (i)

I, Aaron J. Austin, Wisconsin Professional Land Surveyor, do hereby certify that the corner location on this record was determined by me and/or under my direct supervision and that this U.S. Public Land Survey Monument Record is correct and complete to the best of my knowledge and belief.

Dated this 12th day of November, 2018:

Aaron J. Austin
Aaron J. Austin, S-2922



⊕ = CORNER LOCATION

Grant County Coordinates:

NAD 83 (2011)
Northing: 405,137.68
Easting: 853,329.84

HISTORY OF CORNER ESTABLISHMENT:

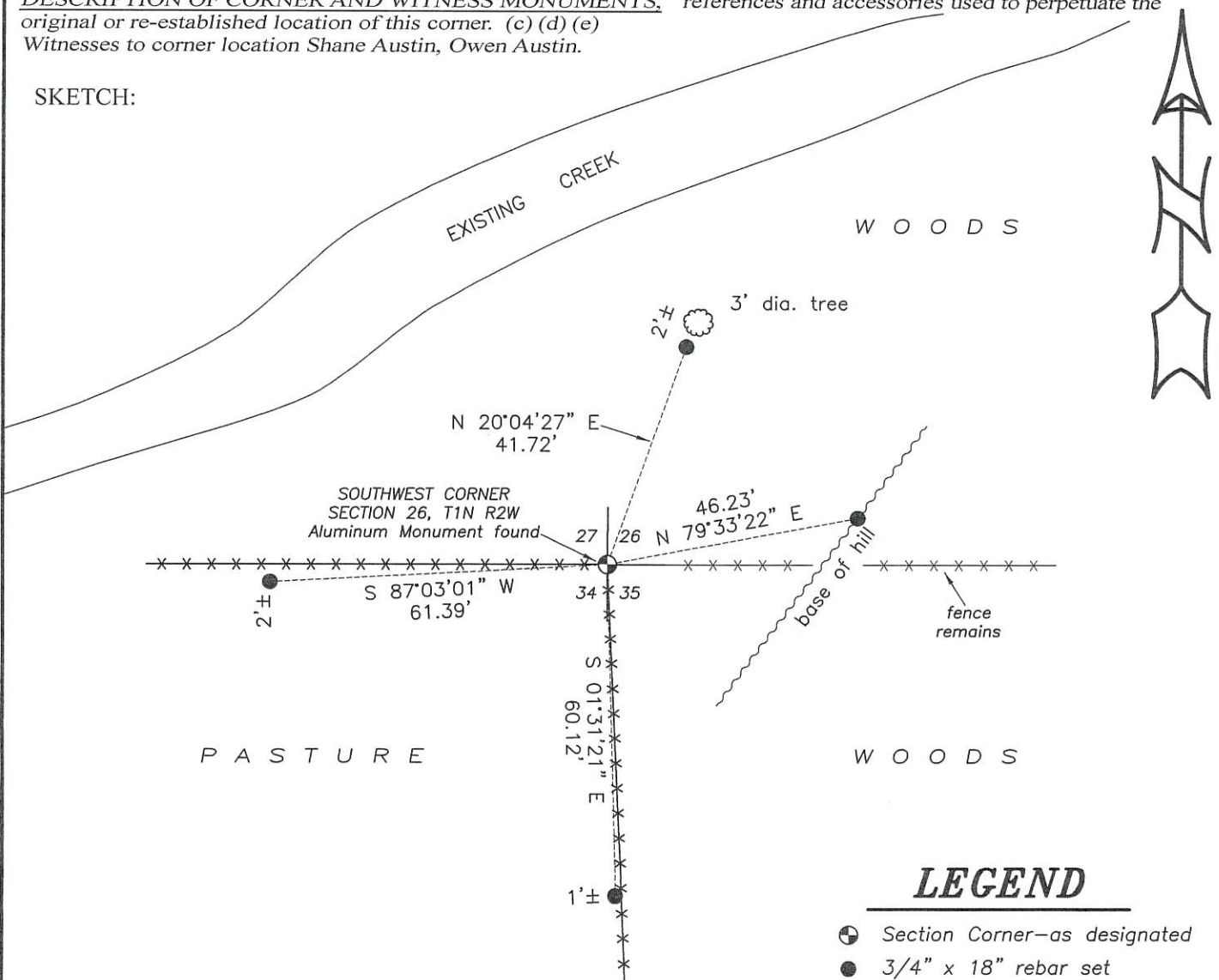
Lucius Lyon set the original corner in 1832.
Larry Austin set an Aluminum Monument at the corner and prepared a Survey Monument Record dated 8-29-1988. Kenneth Buesing found the monument and prepared a Survey Monument Record dated 2-10-2015.

DESCRIPTION OF CORNER EVIDENCE FOUND: (b) (f) (g) (h)

I found the monument set by Larry Austin. I set four new witness corners due to the accuracy of the type of witness monuments set by Buesing. I verified the monument's location with G.P.S. and E.D.M. methods

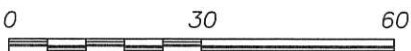
DESCRIPTION OF CORNER AND WITNESS MONUMENTS, references and accessories used to perpetuate the original or re-established location of this corner. (c) (d) (e)
Witnesses to corner location Shane Austin, Owen Austin.

SKETCH:



LEGEND

- ⊕ Section Corner—as designated
- 3/4" x 18" rebar set
- x-x- Existing fence
- ☼ Existing tree



SCALE 1" = 30'

Prepare's Name: Kenneth L. Buesing Address: 1212 Locust St. Dubuque, IA Telephone: (563) 556-4389

SLSI 9-94

UNITED STATES PUBLIC LAND SURVEY MONUMENT RECORD

OF

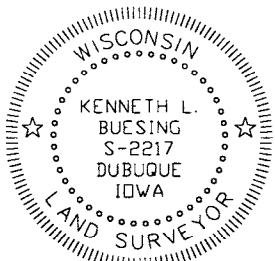
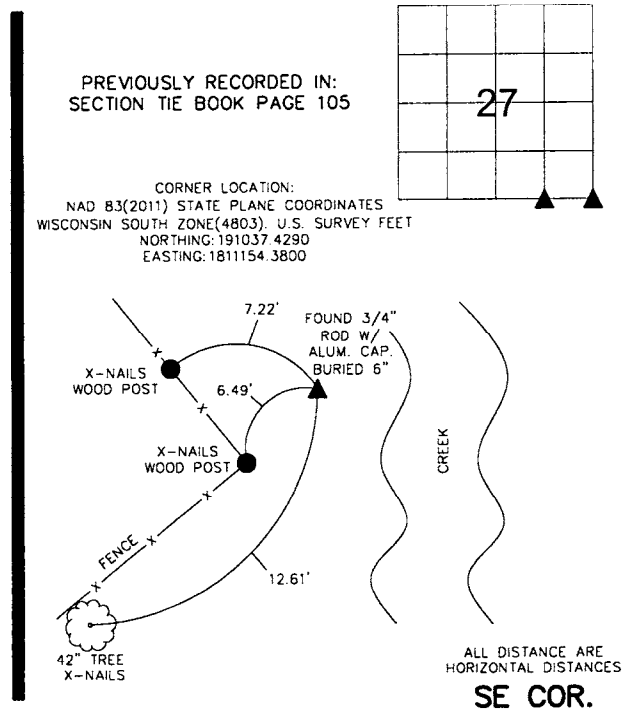
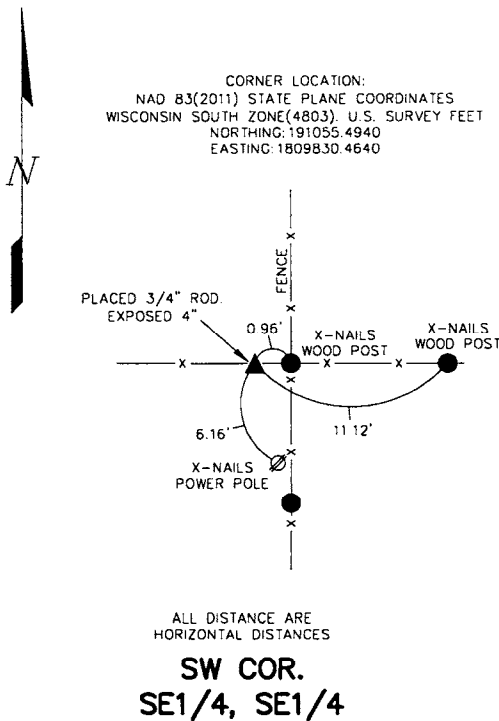
Land Survey Monuments situated in Section 27, Township 1N, Range 2W, of the Fifth Principal Meridian, GRANT County, Wisconsin. Previously recorded in SEE BELOW in County Recorder's Office.
(book, page, document number, etc.)

(Show reason for preparing this certificate, the evidence and detailed procedures used in establishing the corner positions and monumentation found or placed.)

Monument Description and Remarks: **FOUND 3/4" ROD W/ ALUM. CAP @ THE SE CORNER. BURIED 6"**
SET 3/4" ROD MIDWAY BETWEEN THE S/14 & SE CORNER. EXPOSED 4"

PLAN - VIEW

(Show a minimum of three reference ties to durable physical objects, relevant monuments and physical conditions that will enable recovery of the corner.)



I HEREBY CERTIFY THAT THIS LAND SURVEYING DOCUMENT WAS PREPARED AND THE RELATED SURVEY WORK WAS PERFORMED BY ME OR UNDER MY DIRECT PERSONAL SUPERVISION AND THAT I AM A DULY LICENSED LAND SURVEYOR UNDER THE LAWS OF THE STATE OF WISCONSIN.

KENNETH L. BUESING (DATE)

LICENSE NUMBER S-2217

MY LICENSE RENEWAL DATE IS JANUARY 31, 2016

Corners	Section	Twp	Range
SW COR. SE1/4, SE1/4	27	1N	2W
SE COR.	27	1N	2W

	MONUMENT RECORD		
	COUNTY: <u>GRANT</u>		TOWNSHIP: <u>JAMESTOWN</u>
DATE PLOTTED: <u>2-10-15</u>	FIELD BOOK # <u>170</u>	DRAWING # <u>14112-03</u>	
DATE REVISED:	PAGE # <u>45 & 46</u>		

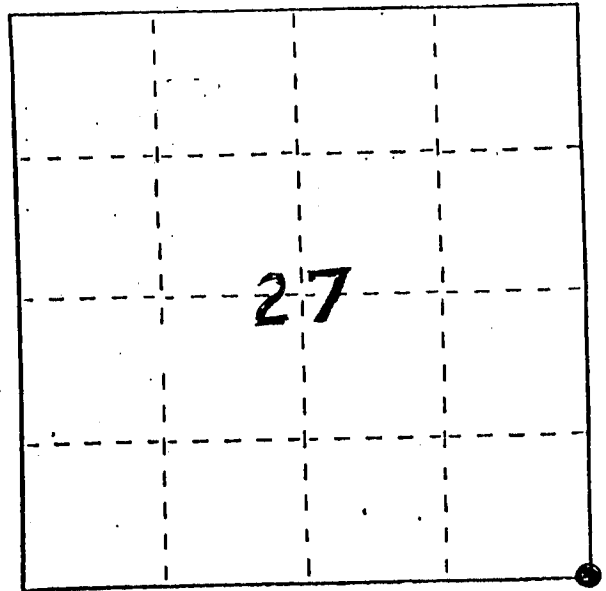
FEB 17 2015

U. S. PUBLIC LAND SURVEY MONUMENT RECORD

INSTRUCTIONS: This record shall show the location of the corner and shall include all of the following nine elements (a through i).

- (a) Identify the corner by reference to the U.S. public land survey system.
 ● = Corner monument restored.

SE CORNER, SEC. 27,
 T1N, R2W, JAMESTOWN TWP.,
 GRANT CO., WISC.



- (b) Describe any record evidence, monument evidence, occupational evidence, testimonial evidence or any other material evidence you considered, and whether the monument was found or placed.
 MONUMENT PLACED AT LOCATION OF FENCE-INTERSECTIONS
 BASED ON OCCUPATIONAL EVIDENCE & VERIFIED BY
 EDM TRAVERSE OF THE AREA.

- (c) In the plan view drawing below, provide reference ties to at least 4 witness monuments, or, if the location is within a municipality, to at least 2 witness monuments. (Witness monuments shall be made of concrete, natural stone, iron or other equally durable material.)
 Describe witness monuments.

- (d) Show a plan view drawing depicting the relevant monuments and reference ties which is sufficient in detail to enable accurate relocation of the corner monument if the corner monument is disturbed. Indicate north.

RECORDED

FEB 27 1989



NO SCALE

LEGEND

- = 1/2" x 18" REBAR
- ⊙ = GRANT CO. ALUM. MONUMENT
- *-*- = EXISTING FENCE

