

MAY 04 2018

12099.25+12100

Prepare's Name: Kenneth L. Buesing Address: 1212 Locust St. Dubuque, IA Telephone: (563) 556-4389

SLSI 9-94

UNITED STATES PUBLIC LAND SURVEY MONUMENT RECORD

OF

Land Survey Monuments situated in Section 25, Township 1N, Range 2W, of the Fourth Principal Meridian, GRANT County, Wisconsin, Previously recorded in NONE in County Recorder's Office.

(Show reason for preparing this certificate, the evidence and detailed procedures used in establishing the corner positions and monumentation found or placed.)

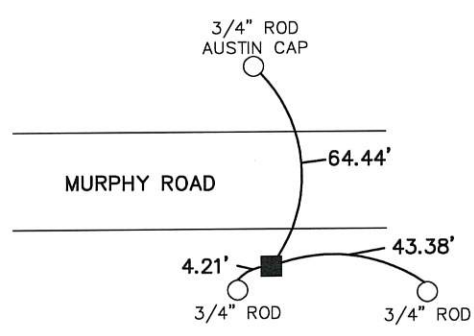
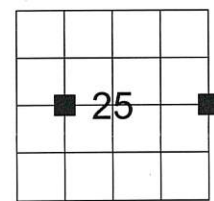
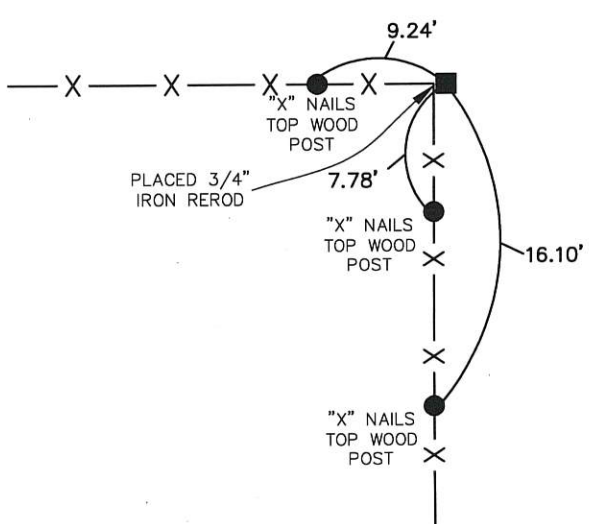
Monument Description and Remarks: FOUND 3/4" IRON REROD W/ ALUMINUM CAP @ THE E1/4 CORNER. PLACED 24" x 3/4" IRON REROD BAR @ THE NW CORNER NE1/4, SW1/4. FLUSH WITH THE GROUND. ESTABLISHED BY USING THE MIDPOINT BETWEEN THE CENTER AND W 1/4 COR.

PLAN - VIEW

(Show a minimum of three reference ties to durable physical objects, relevant monuments and physical conditions that will enable recovery of the corner.)

NW COR. NE1/4, SW1/4 NAD 83 WCCS GRANT COUNTY COORDINATES Y=407748.35 X=859987.30

#99.25



E1/4 COR. NAD 83 WCCS GRANT COUNTY COORDINATES Y=407672.43 X=863985.31

#100

I HEREBY CERTIFY THAT THIS LAND SURVEYING DOCUMENT WAS PREPARED AND THE RELATED SURVEY WORK WAS PERFORMED BY ME OR UNDER MY DIRECT PERSONAL SUPERVISION AND THAT I AM A DULY LICENSED LAND SURVEYOR UNDER THE LAWS OF THE STATE OF WISCONSIN.

Kenneth L. Buesing 27 April, 2018 KENNETH L. BUESING (DATE) LICENSE NUMBER S-2217 MY LICENSE RENEWAL DATE IS JANUARY 31, 2020

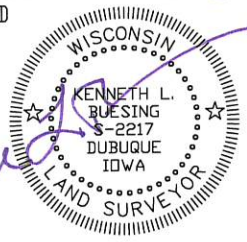


Table with 4 columns: Corners, Section, Twp, Range. Rows: NW COR. NE1/4, SW1/4 (25, 1N, 2W); E 1/4 COR. (25, 1N, 2W)

BUESING ASSOCIATES INC. ENGINEERS AND SURVEYORS 1212 LOCUST ST, DUBUQUE, IA (563) 556-4389

MONUMENT RECORD COUNTY: GRANT TOWNSHIP: JAMESTOWN DATE PLOTTED: 3-14-18 FIELD BOOK # 171 DATE REVISED: PAGE # 1 DRAWING #16283-02 SEC.TIES