

12097.5

# U.S. PUBLIC LAND SURVEY MONUMENT RECORD - GRANT COUNTY, WI

Section 27, Town 1 North Range 2 West, Town of Jamestown (a)

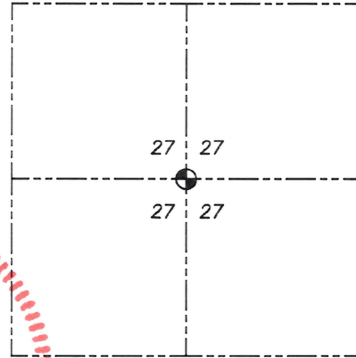
NOTE: This form is intended and designed to fulfill all requirements of the Wisconsin Administrative Code Chapter A-E 7.08, U.S. Public Land Survey Monument Record (3) (a) (b) (c) (d) (e) (f) (g) (h) (i).

CERTIFICATE: (i)

I, Aaron J. Austin, Wisconsin Professional Land Surveyor, do hereby certify that the corner location on this record was determined by me and/or under my direct supervision and that this U.S. Public Land Survey Monument Record is correct and complete to the best of my knowledge and belief.

Dated this 21st day of December, 2023.

*Aaron J. Austin*  
Aaron J. Austin, S-2922



Grant County Coordinates:  
NAD 83 (2011)  
Northing: 407,793.74  
Easting: 850,711.65

● = CORNER LOCATION

HISTORY OF CORNER ESTABLISHMENT:

Corner was not set with the Original Government Survey.  
Kenneth Kerst set a 3/4" Rebar on a Survey filed in Book GCA, Page 899 dated 7-11-1978.  
Larry Austin set a 3/4" Rebar on a Survey Filed in Book X, Page 71 dated 6-20-1996.

DESCRIPTION OF CORNER EVIDENCE FOUND: (b) (f) (g) (h)

I was unable to locate the 3/4" Rebar Larry set. I set a 3/4" x 18" Rebar online from the North 1/4 Corner of Section 27 through a 3/4" Rebar marking the Northwest Corner of Book X, Page 71 at a recorded distance of 2,642.81'. I set four witness corners after I verified the Monument's location with G.P.S. and E.D.M. methods.

DESCRIPTION OF CORNER AND WITNESS MONUMENTS, references and accessories used to perpetuate the original or re-established location of this corner. (c) (d) (e)

Witnesses to corner location Owen Austin, Tanner Austin.  
Drawn by: Owen Austin.

SKETCH:



## LEGEND

- Section Corner—as designated
- 3/4" rebar found
- 3/4" x 18" rebar set
- x-x-x- Existing fence
- ( ) Recorded as

