

# U.S. PUBLIC LAND SURVEY MONUMENT RECORD - GRANT COUNTY, WI

Section 21, Town 1 North Range 2 West, Town of Jamestown (a)

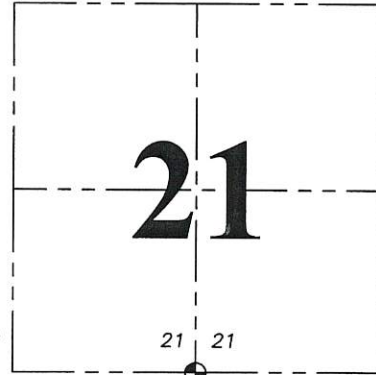
NOTE: This form is intended and designed to fulfill all requirements of the Wisconsin Administrative Code Chapter A-E 7.08, U.S. Public Land Survey Monument Record (3) (a) (b) (c) (d) (e) (f) (g) (h) (i).

**CERTIFICATE:** (i)

I, Aaron J. Austin, Wisconsin Professional Land Surveyor, do hereby certify that the corner location on this record was determined by me and/or under my direct supervision and that this U.S. Public Land Survey Monument Record is correct and complete to the best of my knowledge and belief.

Dated this 21st day of September, 2018.

*Aaron J. Austin*  
Aaron J. Austin, S-2922



⊕ = CORNER LOCATION

Grant County Coordinates:  
NAD 83 (2011)  
Northing: 410,397.03  
Easting: 845,458.58

HISTORY OF CORNER ESTABLISHMENT:

Original corner was set by Lucius Lyon in 1832.  
Bruce Bowden reset the corner and prepared a Survey Monument Record dated 4-4-1978.

DESCRIPTION OF CORNER EVIDENCE FOUND: (b) (f) (g) (h)

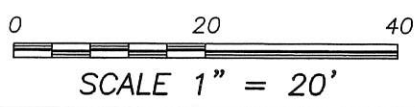
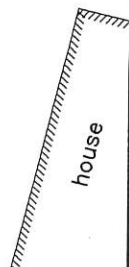
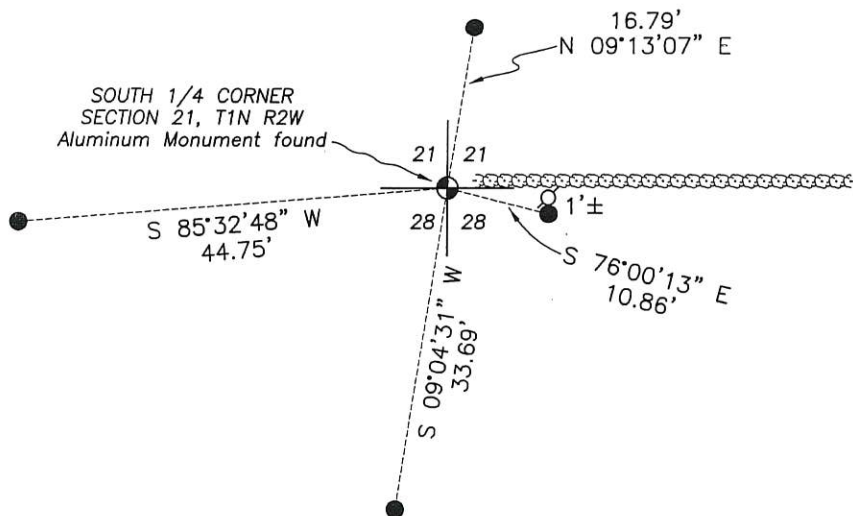
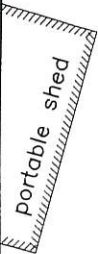
I found the Aluminum Monument as set by Bruce Bowden. I set four new witness corners after I verified the monument's location with G.P.S. and E.D.M. methods

DESCRIPTION OF CORNER AND WITNESS MONUMENTS: references and accessories used to perpetuate the original or re-established location of this corner. (c) (d) (e)  
Witnesses to corner location Shane Austin, Owen Austin.

SKETCH:

## LEGEND

- ⊕ Section Corner—as designated
- 3/4" x 18" rebar set
- ⊘ Existing utility pole
- ⋯ Line of bushes
- ▨ Existing structure



# SECTION CORNER TIES

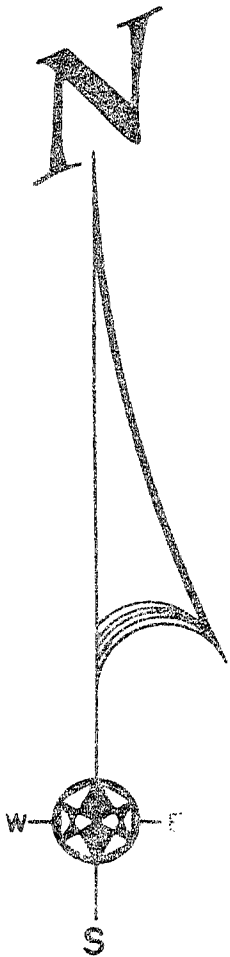
*James Town*

TO THE SOUTH  $\frac{1}{4}$  CORNER OF SECTION 21, TOWN 1 NORTH,  
RANGE 2 WEST, FOURTH PRINCIPLE MERIDIAN, JAMES TOWN  
TOWNSHIP, BRANT COUNTY, WISCONSIN.

I, Bruce D. Bowden, hereby certify that I have  
complied with the Wisconsin Statutes, the Statutes  
of the United States and the rules and regulations  
made by the Secretary of the Interior in the location  
of the corner shown below.




April 4, 1978

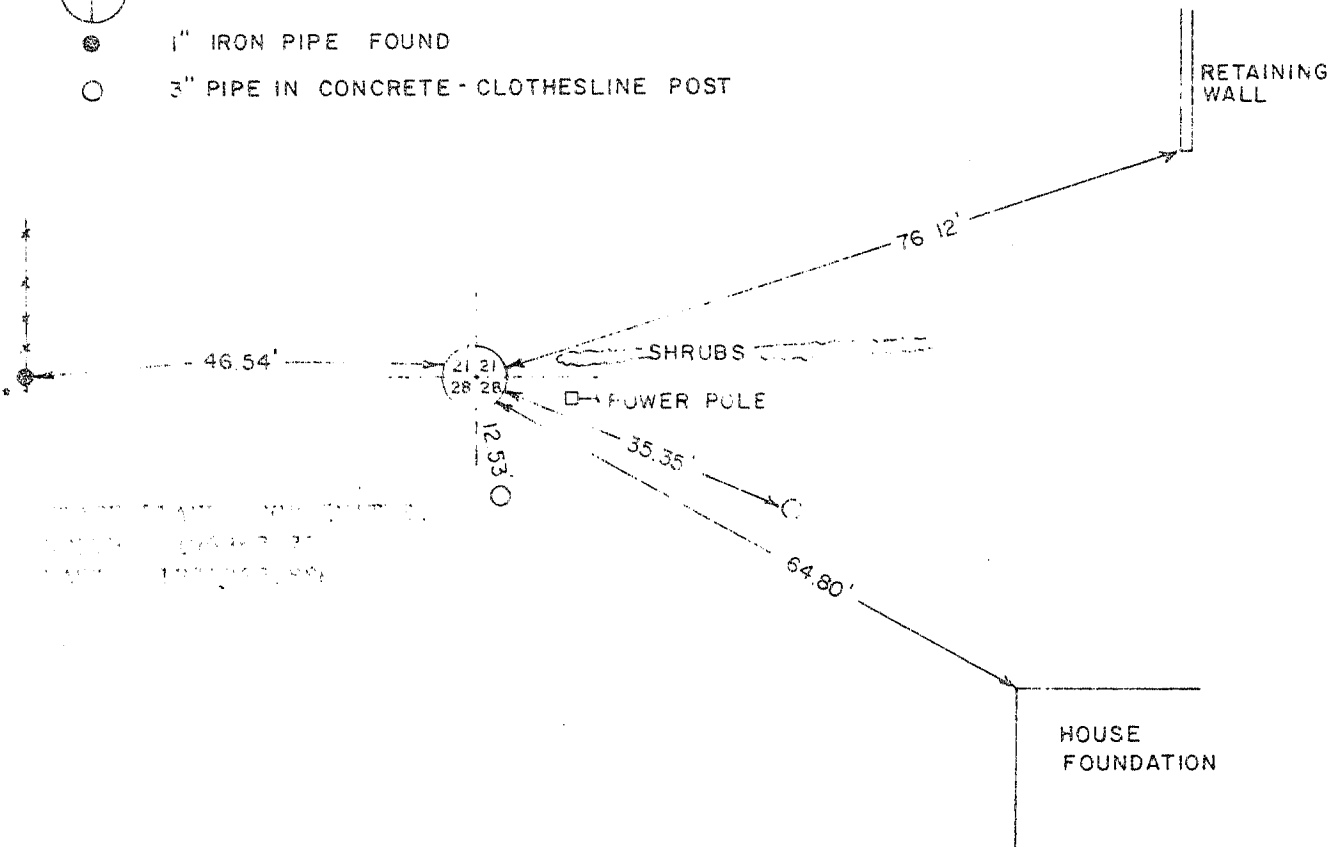
*Bruce D. Bowden*  
Bruce D. Bowden S.L.S. - 1750



Monument set in place of 1" x 16" iron  
pipe that was recorded as the corner.

## LEGEND

-  4" x 30" CAST ALUMINUM MONUMENT (AT GRADE)
-  1" IRON PIPE FOUND
-  3" PIPE IN CONCRETE - CLOTHESLINE POST



BRANT COUNTY, WISCONSIN  
SECTION 21, TOWN 1 NORTH,  
RANGE 2 WEST

BOOK D-1 PAGE 47  
JOB NO. D-78007  
CHECKED *RJM*  
DRAWN BY *RJM*

SCALE: 1" = 20'

TALARCZYK & ASSOC., INC.

110 E. Division Street  
DODGEVILLE, WI 53533

Phone 608/935-5301

*P-88*