

U.S. PUBLIC LAND SURVEY MONUMENT RECORD - GRANT COUNTY, WI

Section 28, Town 1 North Range 2 West, Town of Jamestown (a)

NOTE: This form is intended and designed to fulfill all requirements of the Wisconsin Administrative Code Chapter A-E 7.08, U.S. Public Land Survey Monument Record (3) (a) (b) (c) (d) (e) (f) (g) (h) (i).

CERTIFICATE: (i)

I, Aaron J. Austin, Wisconsin Professional Land Surveyor, do hereby certify that the corner location on this record was determined by me and/or under my direct supervision and that this U.S. Public Land Survey Monument Record is correct and complete to the best of my knowledge and belief.

Dated this 3rd day of August, 2022.

Aaron J. Austin
 Aaron J. Austin, S-2922



☉ = CORNER LOCATION

Grant County Coordinates:
 NAD 83 (2011)
 Northing: 410,414.82
 Easting: 848,100.74

HISTORY OF CORNER ESTABLISHMENT:

Original corner was set in 1832 by Lucius Lyon.
 David Krohn set an Cast Monument on a Survey Filed in Book GCA, Page 80 dated 9-25-1976.
 Bruce Bowden found an Cast Monument and prepared a Survey Monument Record dated 4-4-1978.

DESCRIPTION OF CORNER EVIDENCE FOUND: (b) (f) (g) (h)

I found the D.O.T. Cast Monument and three existing witness corners. I established one additional witness corner after I verified the Monument's location with G.P.S. and E.D.M. methods.

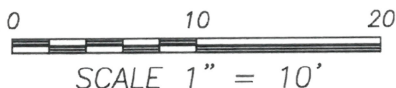
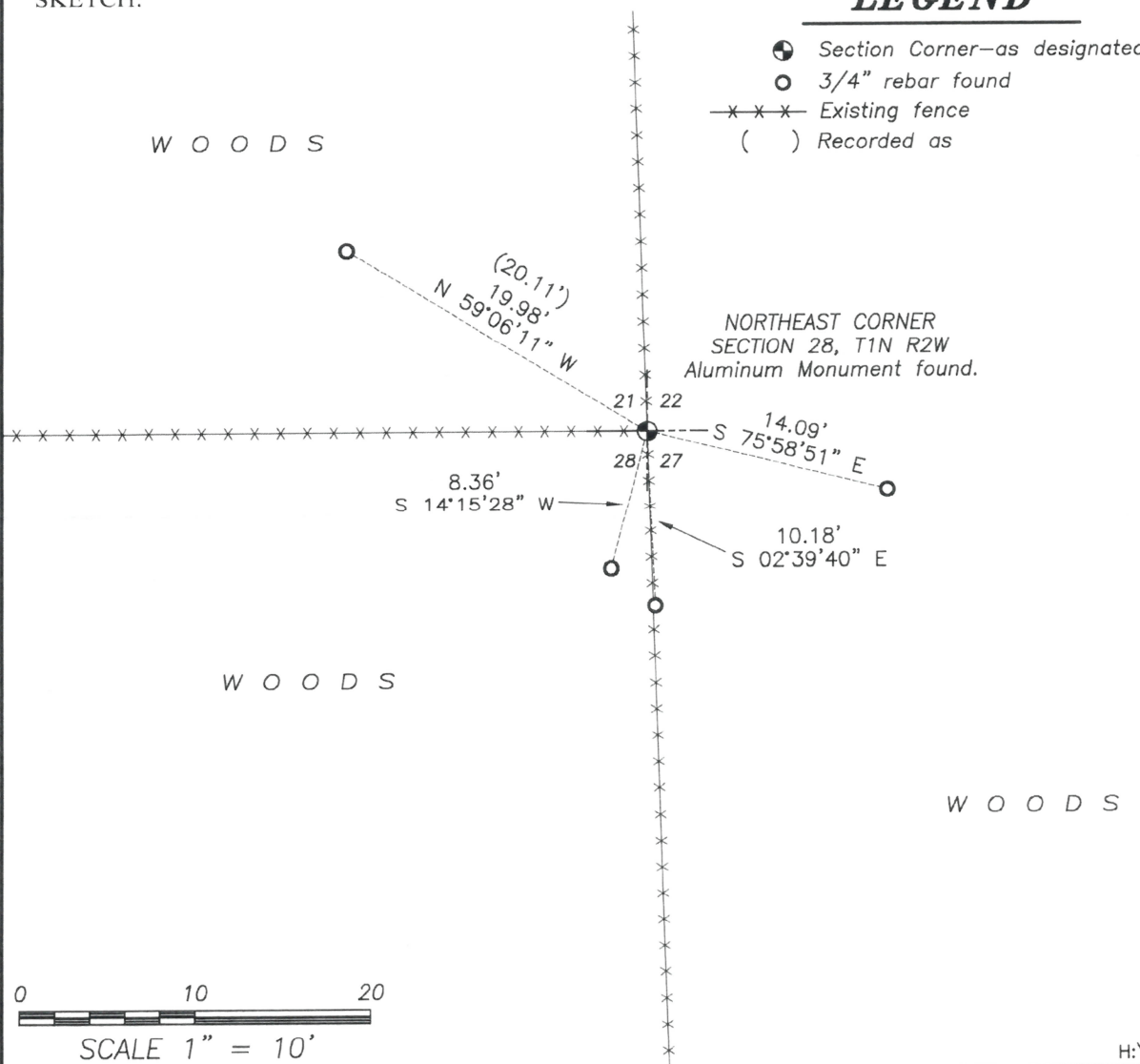
DESCRIPTION OF CORNER AND WITNESS MONUMENTS: references and accessories used to perpetuate the original or re-established location of this corner. (c) (d) (e)

Witnesses to corner location Owen Austin, Tanner Austin.
 Drawn by: Owen Austin.

SKETCH:

LEGEND

- ☉ Section Corner—as designated
- 3/4" rebar found
- x-x-x- Existing fence
- () Recorded as



SECTION CORNER TIES

TO THE NORTHEAST CORNER OF SECTION 28, TOWN 1 NORTH,
RANGE 2 WEST, FOURTH PRINCIPLE MERIDIAN, JAMESTOWN
TOWNSHIP, GRANT COUNTY, WISCONSIN.



I, Bruce D. Bowden, hereby certify that I have
complied with the Wisconsin Statutes, the Statutes
of the United States and the rules and regulations
of the Secretary of the Interior in the location of
the corner shown below.

April 4, 1978

Bruce D. Bowden
Bruce D. Bowden R.L.S.-1250

Monument as established in a survey by David Krohn
dated August 23, 1976.

STATE OF WISCONSIN
COUNTY OF GRANT
TOWNSHIP OF JAMESTOWN

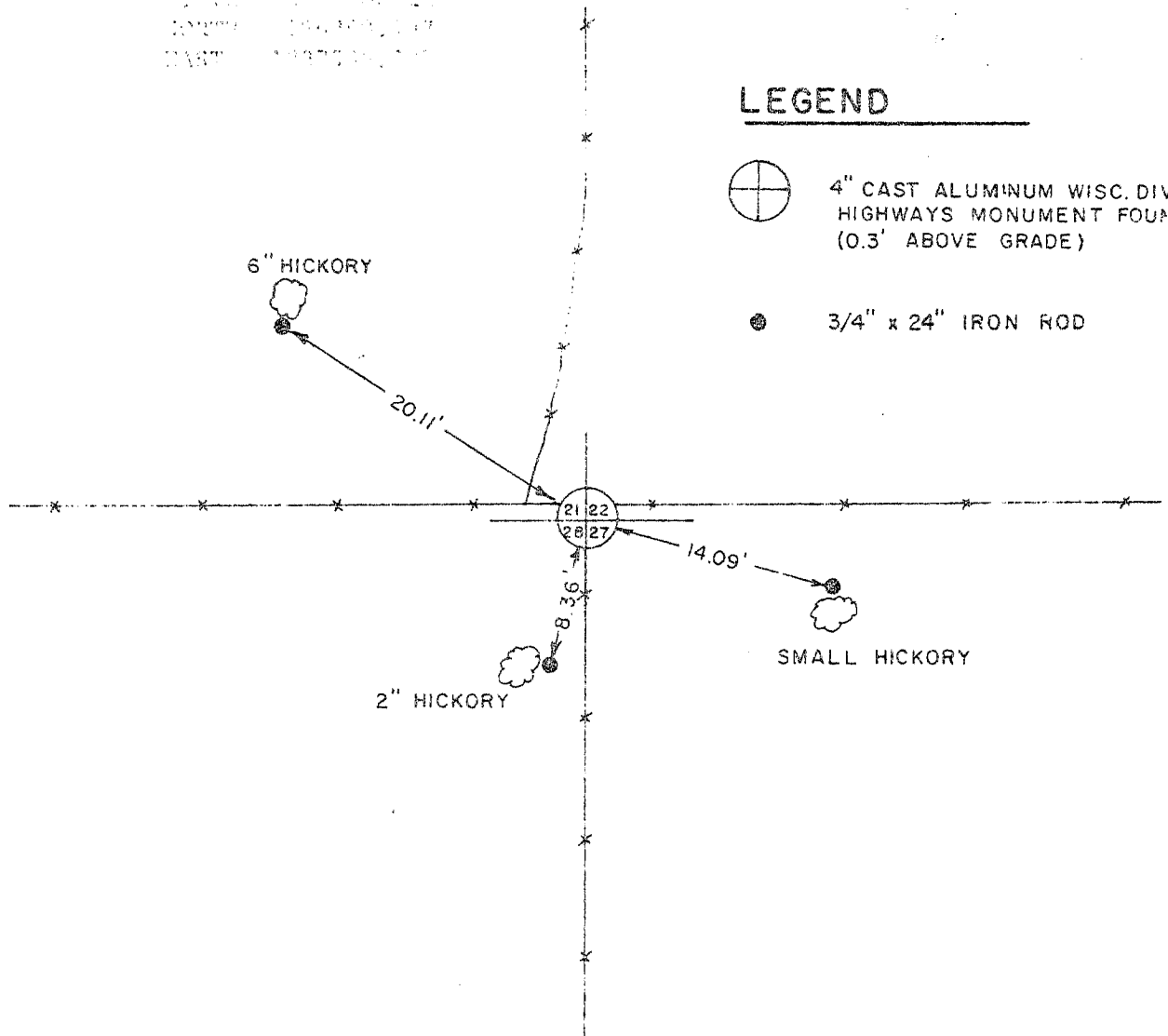
LEGEND



4" CAST ALUMINUM WISC. DIV. OF
HIGHWAYS MONUMENT FOUND.
(0.3' ABOVE GRADE)



3/4" x 24" IRON ROD



BOOK D-1 PAGE 47
JOB NO. D-78007
CHECKED RJM
DRAWN BY RJM

SCALE: 1" = 10'

TALARCZYK & ASSOC., INC.

110 E. Division Street
DODGEVILLE, WI 53533

Phone 608/935-5301

87