

MAR 24 2000

GRANT COUNTY CERTIFIED LAND CORNER

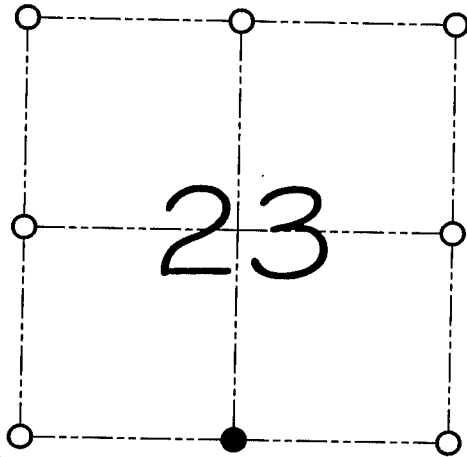
CORNER NUMBER 84

CERTIFICATE:

I, Larry L. Austin, do hereby certify that on the 1st day of February, 2000, I found evidence of the South 1/4 corner of Section 23, Town 1 North, Range 2 West, of the 4th Principal Meridian, and I re-established said corner according to the Wisconsin statutes as shown and described hereon.

Dated this 10th day of February, 2000

Larry L. Austin
Larry L. Austin S-1903



● = CORNER LOCATION

**SOUTH 1/4 CORNER OF
SECTION 23, T 1 N R 2 W
TOWN OF JAMESTOWN**

HISTORY OF ORIGINAL CORNER ESTABLISHMENT:

The original corner was set in 1832 by Lucius Lyon.
Corner was set in 1989 by Ronald Turner and tied out later by Bruce Bowden.

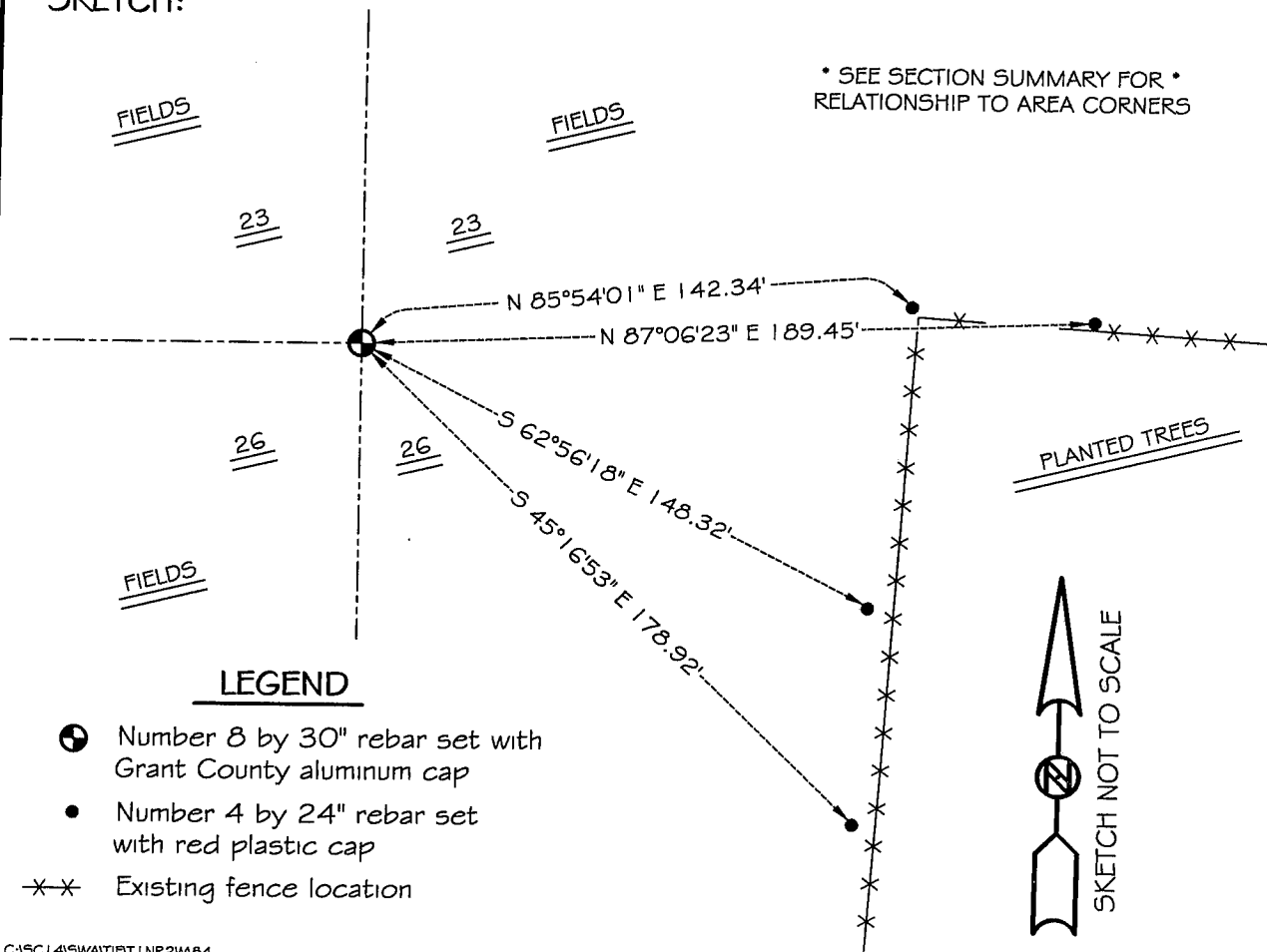
DESCRIPTION OF CORNER EVIDENCE FOUND:

I found no evidence to the location of the corner. The corner has been lost do to cultivation. I reset the corner based on evidence of the Bowden / Turner surveys. I accepted this location after an E.D.M. and G.P.S. traverse of the area.

DESCRIPTION OF CORNER AND WITNESS MONUMENTS, references and accessories used to perpetuate the original or re-established location of this corner

WITNESS TO THE CORNER LOCATION: SHANE AUSTIN & BOBBY SEDGWICK

SKETCH:



LEGEND

- Number 8 by 30" rebar set with Grant County aluminum cap
- Number 4 by 24" rebar set with red plastic cap
- x-x- Existing fence location

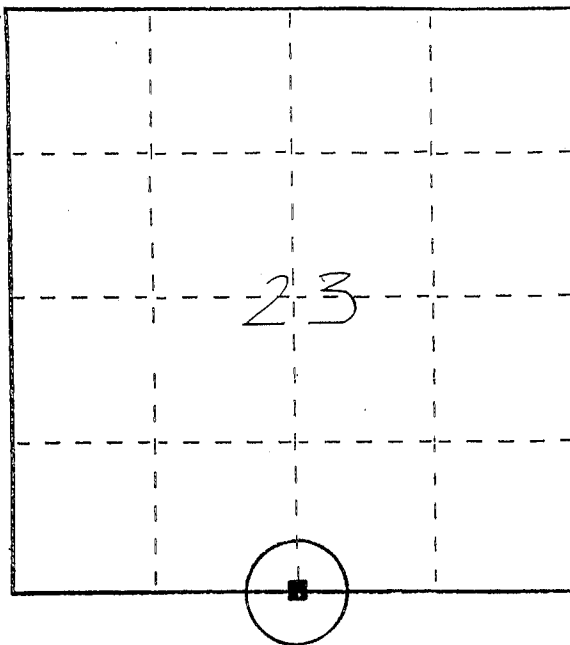
U. S. PUBLIC LAND SURVEY MONUMENT RECORD

INSTRUCTIONS: This record shall show the location of the corner and shall include all of the following nine elements (a through i).

(a) Identify the corner by reference to the U.S. public land survey system.

○ = Corner monument restored.

*SOUTH 1/4 CORNER
SECTION 23
TOWN 1 NORTH
RANGE 2 WEST
JAMESTOWN TOWNSHIP
GRANT COUNTY, WISCONSIN*

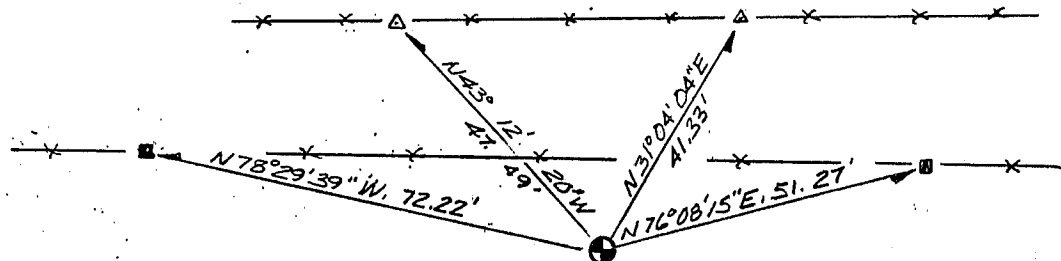
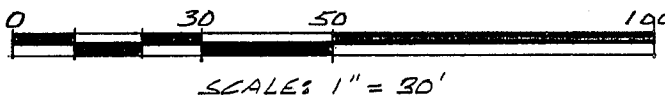


(b) Describe any record evidence, monument evidence, occupational evidence, testimonial evidence or any other material evidence you considered, and whether the monument was found or placed.

MONUMENT FOUND & ACCEPTED FROM TIES AS PER SURVEY by RONALD J. TURNER, RLS-1794 ON "PLAT of KRUSER FARM"; DATED JULY 25, 1989.

(c) In the plan view drawing below, provide reference ties to at least 4 witness monuments, or, if the location is within a municipality, to at least 2 witness monuments. (Witness monuments shall be made of concrete, natural stone, iron or other equally durable material, ~~except wood.~~) Describe witness monuments.

(d) Show a plan view drawing depicting the relevant monuments and reference ties which is sufficient in detail to enable accurate relocation of the corner monument if the corner monument is disturbed. Indicate north.



LEGEND

■ No. 5 x 24" REBAR SET

△ No. 4 x 24" REBAR SET

—x—x— FENCE

⊕ No. 10 x 30" REBAR SET

@ S1/4 23-1-2W

81

(e) Describe any material discrepancy between the location of the corner as restored or reestablished and the location of that corner as previously restored or reestablished by distance and direction. Show the discrepancy on the plan view drawing under (d), above. Show the distances between the corner as previously restored or reestablished and (1) the corner as restored or reestablished, and (2) to at least 2 of the witness monuments shown on the drawing in (d), above.

NONE

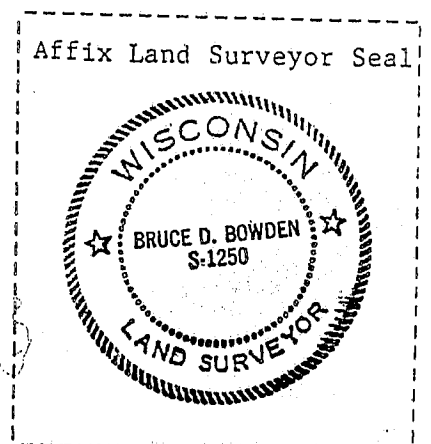
(f) Was the corner restored through acceptance of (1) an obliterated evidence location, or, (2) a found perpetuated location?

(2) A FOUND PERPETUATION LOCATION

(g&h) Was the corner reestablished through lost corner proportionate methods? If so, show the method, including the directions and distances to other public land survey corners used as evidence or used for proportioning in determining the corner location?

No.

(i) I, BRUCE D. BOWDEN
(type or print name) certify that the corner location shown on this record was determined by me or under my direction and control and that this U.S. Public Land Survey Monument Record is correct and complete to the best of my knowledge and belief.



Bruce D. Bowden
Signature

Dec 17, 1990
Date