

U.S. PUBLIC LAND SURVEY MONUMENT RECORD - GRANT COUNTY, WI

Section 24, Town 1 North Range 2 West, Town of Jamestown (a)

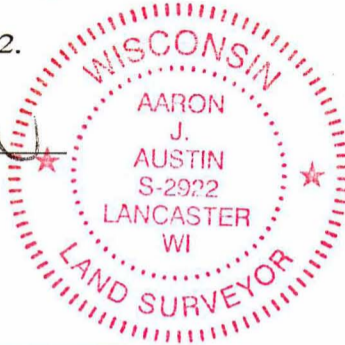
NOTE: This form is intended and designed to fulfill all requirements of the Wisconsin Administrative Code Chapter A-E 7.08, U.S. Public Land Survey Monument Record (3) (a) (b) (c) (d) (e) (f) (g) (h) (i).

CERTIFICATE: (i)

I, Aaron J. Austin, Wisconsin Professional Land Surveyor, do hereby certify that the corner location on this record was determined by me and/or under my direct supervision and that this U.S. Public Land Survey Monument Record is correct and complete to the best of my knowledge and belief.

Dated this 25th day of May, 2022.

Aaron J. Austin
Aaron J. Austin, S-2922



⊕ = CORNER LOCATION

Grant County Coordinates:
NAD 83 (2011)
Northing: 410,332.48
Easting: 861,330.44

HISTORY OF CORNER ESTABLISHMENT:

Original corner was set in 1832 by Lucius Lyon.
E. Curtis Crook set a 2" WISDOT Aluminum Monument at the corner location and prepared a Survey Monument Record dated 1-15-1996.

DESCRIPTION OF CORNER EVIDENCE FOUND: (b) (f) (g) (h)

The monument for the section corner was removed during reconstruction of Highway #11. The corner location was determined from the existing house corner as established by Mr. Crook and ties to right of way monuments per R/W Project Number 1702-01-21. The corner location was verified with G.P.S. and E.D.M. methods

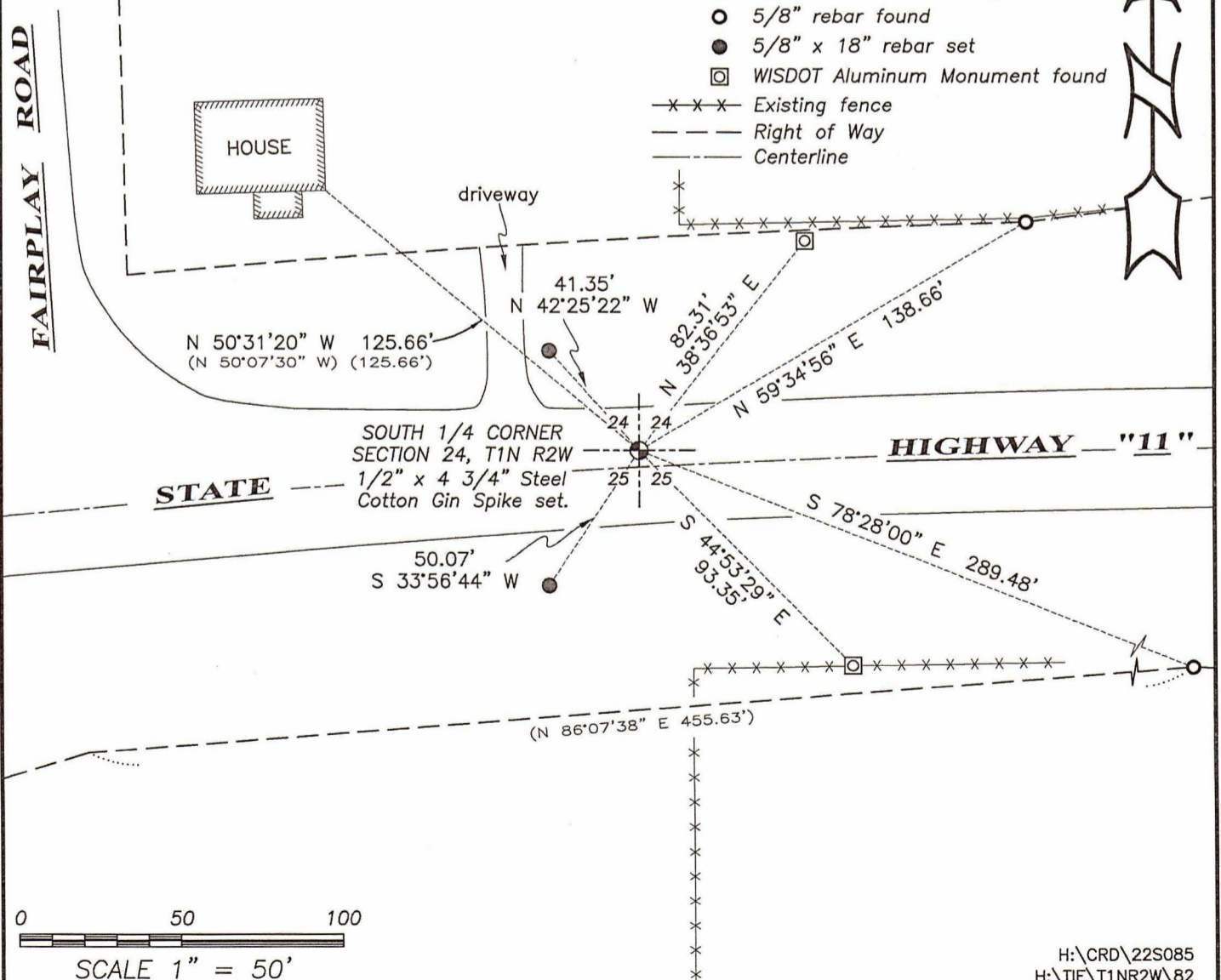
DESCRIPTION OF CORNER AND WITNESS MONUMENTS: references and accessories used to perpetuate the original or re-established location of this corner. (c) (d) (e)

Witnesses to corner location Shane Austin, Owen Austin, Tanner Austin.
Drawn by Owen Austin

LEGEND

- ⊕ Section Corner—as designated
- 5/8" rebar found
- 5/8" x 18" rebar set
- ⊠ WISDOT Aluminum Monument found
- x-x-x Existing fence
- - - Right of Way
- - - Centerline

SKETCH:



U. S. PUBLIC LAND SURVEY MONUMENT RECORD

INSTRUCTIONS :

This record shall show the location of the corner and shall include all of the following nine elements (a through i).

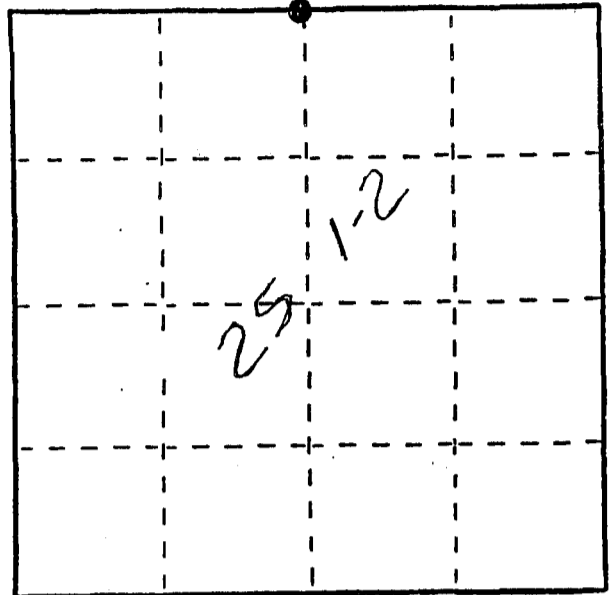
- (a) Identify the corner by reference to the U.S. public land survey system.
 ● = Corner monument restored.

N1/4 Corner of Section 25

T1N R2W

Town of JAMESTOWN

Grant County, Wi.



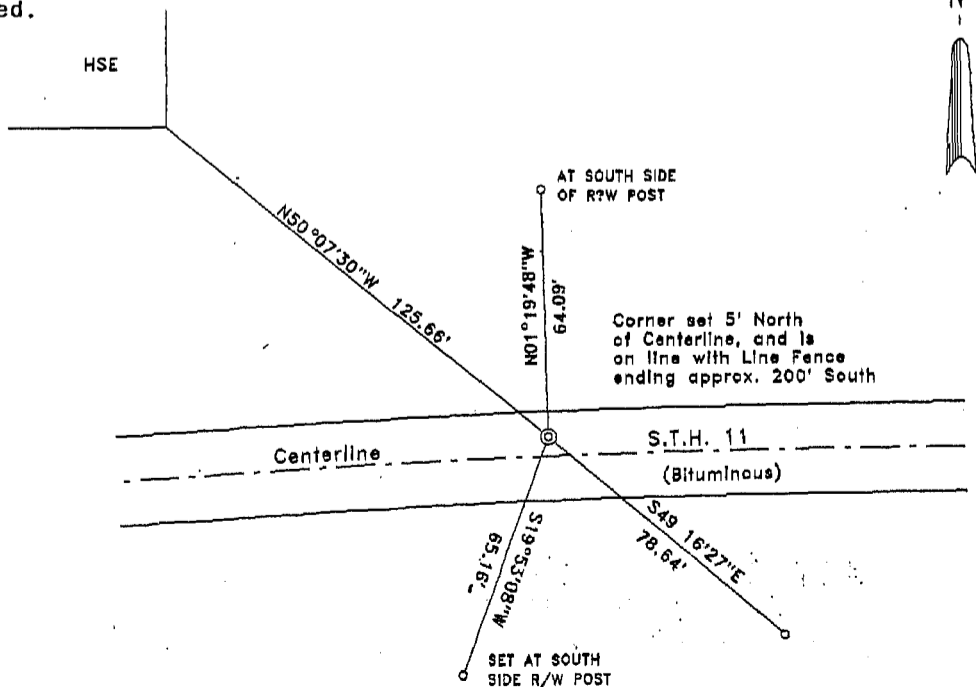
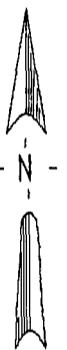
- (b) Describe any record evidence, monument evidence, occupational evidence, testimonial evidence or any other material evidence you considered, and whether the monument was found or placed.

Corner was originally established by Lucius Lyon in 1832; found no later records of any future surveys to help. Magnetic locator detected iron material beneath road surface at the occupied N-S line and the centerline tangent extended from the East. Fitting well with the adjacent corners this was accepted as the location, although excavation for the monument revealed only an old bolt, threaded end deeper than the head. This could have been standing at one time, and tipped by road maintenance. It should also be noted there was no other readings with the locator in the area.

- (c) In the plan view drawing below, provide reference ties to at least 4 witness monuments, or, if the location is within a municipality, to at least 2 witness monuments. (Witness monuments shall be made of concrete, natural stone, iron or other equally durable material.) Describe witness monuments.

- (d) Show a plan view drawing depicting the relevant monuments and reference ties which is sufficient in detail to enable accurate relocation of the corner monument if the corner monument is disturbed. Indicate north.

Scale: 1" = 50'



● Corner Monument is 2" X 30" WI. D.O.T. Aluminum Monument

○ 3/4" X 30 Rebar set

(e) Describe any material discrepancy between the location of the corner as restored or reestablished and the location of that corner as previously restored or reestablished by distance and direction. Show the discrepancy on the plan view drawing under (d), above. Show the distances between the corner as previously restored or reestablished and (1) the corner as restored or reestablished, and (2) to at least 2 of the witness monuments shown on the drawing in (d), above.

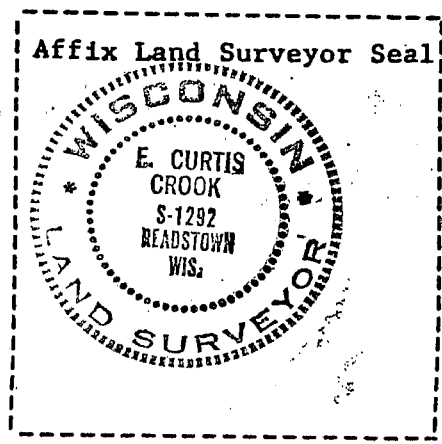
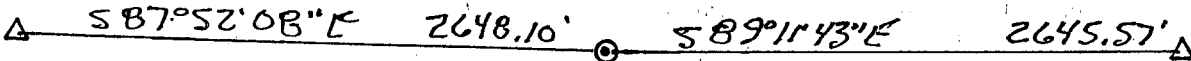
None

(f) Was the corner restored through acceptance of (1) an obliterated evidence location, or, (2) a found perpetuated location?

(1)

(g&h) Was the corner reestablished through lost corner proportionate methods? If so, show the method, including the directions and distances to other public land survey corners used as evidence or used for proportioning in determining the corner location?

No



(i) I, F. Curtis Crook
(type or print name) certify that the corner location shown on this record was determined by me or under my direction and control and that this U.S. Public Land Survey Monument Record is correct and complete to the best of my knowledge and belief.

F. Curtis Crook 1-15-96