

# U.S. PUBLIC LAND SURVEY MONUMENT RECORD - GRANT COUNTY, WI

Section 24, Town 1 North Range 2 West, Town of Jamestown (a)

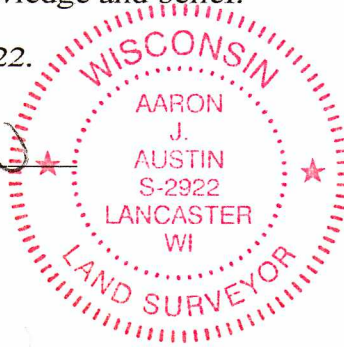
NOTE: This form is intended and designed to fulfill all requirements of the Wisconsin Administrative Code Chapter A-E 7.08, U.S. Public Land Survey Monument Record (3) (a) (b) (c) (d) (e) (f) (g) (h) (i).

CERTIFICATE: (i)

I, Aaron J. Austin, Wisconsin Professional Land Surveyor, do hereby certify that the corner location on this record was determined by me and/or under my direct supervision and that this U.S. Public Land Survey Monument Record is correct and complete to the best of my knowledge and belief.

Dated this 25th day of May, 2022.

*Aaron J. Austin*  
Aaron J. Austin, S-2922



Grant County Coordinates:  
NAD 83 (2011)  
Northing: 410,320.72  
Easting: 863,975.87

HISTORY OF CORNER ESTABLISHMENT:

Original corner was set in 1832 by Lucius Lyon.  
Ronald Turner set a P.K. Nail at the corner and prepared a tie sheet dated 7-31-1987.  
Bruce Bowden found a 4" Aluminum Monument at the corner and prepared a tie sheet dated 10-20-2017.

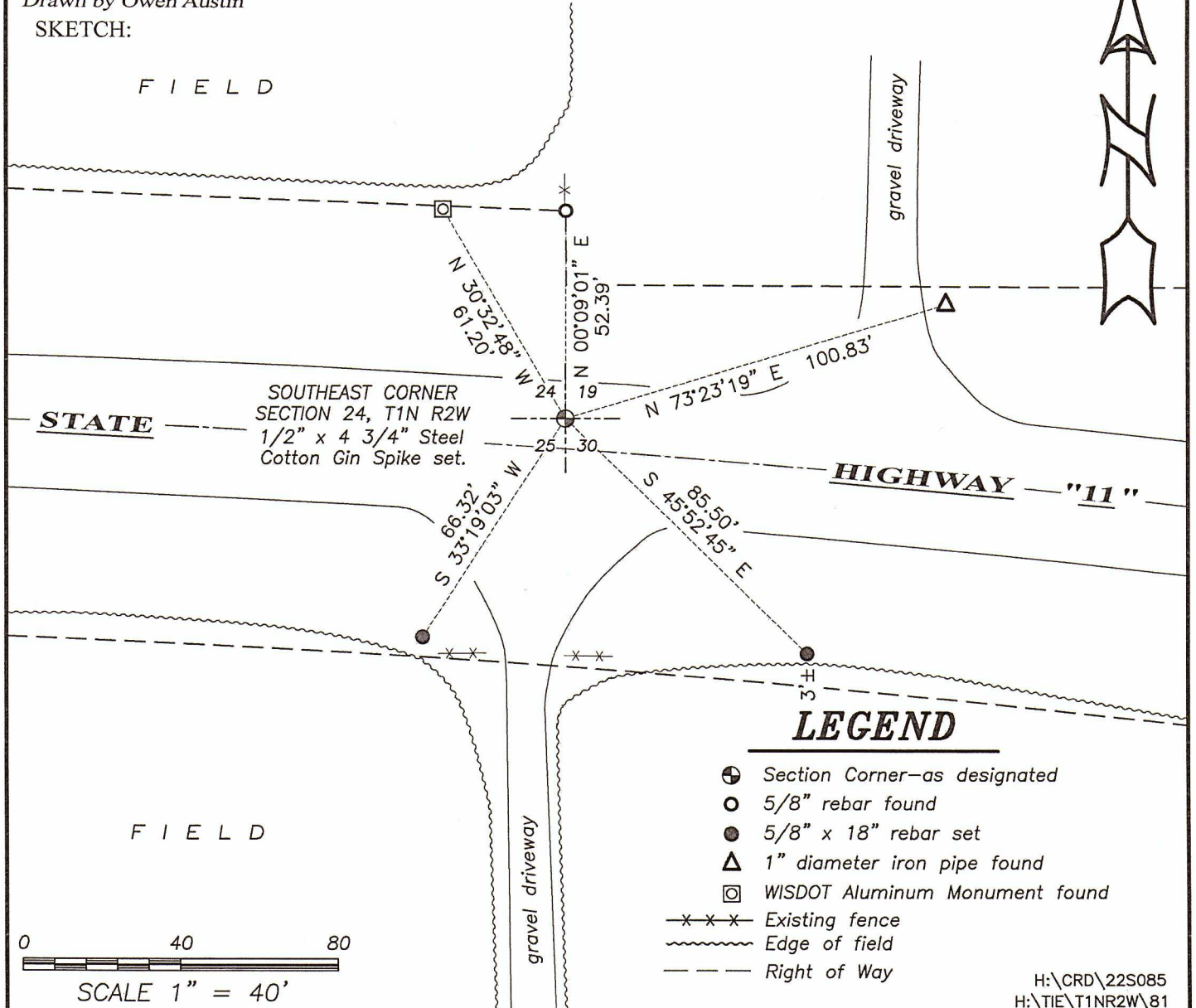
DESCRIPTION OF CORNER EVIDENCE FOUND: (b) (f) (g) (h)

The monument for the section corner was removed during reconstruction of Highway #11. The corner location was determined from two existing witness corners established by Mr. Bowden. This location was verified by Coordinates listed on his tie sheet.

DESCRIPTION OF CORNER AND WITNESS MONUMENTS, references and accessories used to perpetuate the original or re-established location of this corner. (c) (d) (e)

Witnesses to corner location Shane Austin, Owen Austin, Tanner Austin.  
Drawn by Owen Austin

SKETCH:



**LEGEND**

- ⊕ Section Corner—as designated
- 5/8" rebar found
- 5/8" x 18" rebar set
- △ 1" diameter iron pipe found
- ⊠ WISDOT Aluminum Monument found
- x-x-x- Existing fence
- ~~~~~ Edge of field
- - - - - Right of Way

