

U.S. PUBLIC LAND SURVEY MONUMENT RECORD - GRANT COUNTY, WI

Section 23, Town 1 North Range 2 West, Town of Jamestown (a)

NOTE: This form is intended and designed to fulfill all requirements of the Wisconsin Administrative Code Chapter A-E 7.08, U.S. Public Land Survey Monument Record (3) (a) (b) (c) (d) (e) (f) (g) (h) (i).

CERTIFICATE: (i)

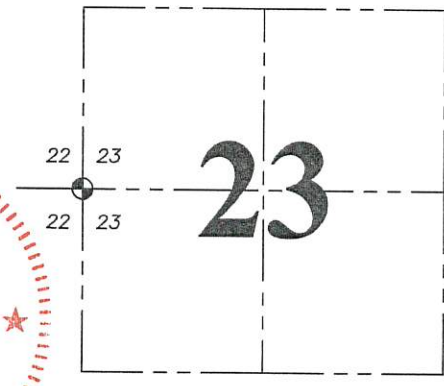
I, Aaron J. Austin, Wisconsin Professional Land Surveyor, do hereby certify that the corner location on this record was determined by me and/or under my direct supervision and that this U.S. Public Land Survey Monument Record is correct and complete to the best of my knowledge and belief.

Dated this 22nd day of February, 2018.

Aaron J. Austin

Aaron J. Austin, S-2922

Grant County Coordinates:
NAD 83 (2011)
Northing: 413,098.50
Easting: 853,405.91



⊕ = CORNER LOCATION

HISTORY OF CORNER ESTABLISHMENT:

Lucius Lyon set the original corner in 1832.
Ronald Turner set a P.K. Nail at the corner and prepared a Survey Monument Record dated 5-1-1989.
Ronald Turner stated that he set a 5/8" rebar at the corner on a Survey dated 5-1-1989, filed in Book M, Page 68.
Several other surveys refer to the corner as a 3/4" rebar.

DESCRIPTION OF CORNER EVIDENCE FOUND: (b) (f) (g) (h)

I found a rebar at the corner location. I set 4 new witness corners after I verified the rebar's location with G.P.S. and E.D.M. methods.

DESCRIPTION OF CORNER AND WITNESS MONUMENTS, references and accessories used to perpetuate the original or re-established location of this corner. (c) (d) (e)

Witnesses to corner location Shane Austin. Drawn by Owen Austin.

SKETCH:

LEGEND

- ⊕ Section Corner—as designated
- 3/4" x 18" rebar set
- ☼ Existing tree

F I E L D



Tie set 4'± east edge of telephone pedestal

N 57°36'30" W
65.13'

N 46°33'
N 46°13'47" E

Edge of blacktop

SANDY HOOK

ROAD

S 37°04'
S 54°14'07" W

S 38°02'
S 59°22'10" E

Edge of blacktop

Tie set 5'± north edge of tree

WEST 1/4 CORNER
SECTION 23, T1N R2W
5/8" Rebar found

Driveway

Driveway

0 30 60

SCALE 1" = 30'

JUL 2 1989

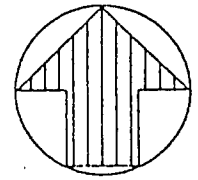
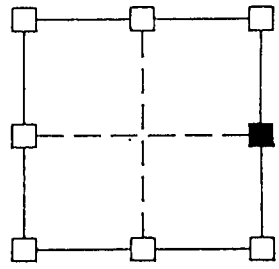
U. S. PUBLIC LAND SURVEY MONUMENT RECORD

GRANT COUNTY, WISCONSIN

SECTION 22 TOWNSHIP 1N. RANGE 2W CORNER E 1/4
EVIDENCE NO PIN OR ROD WAS FOUND.

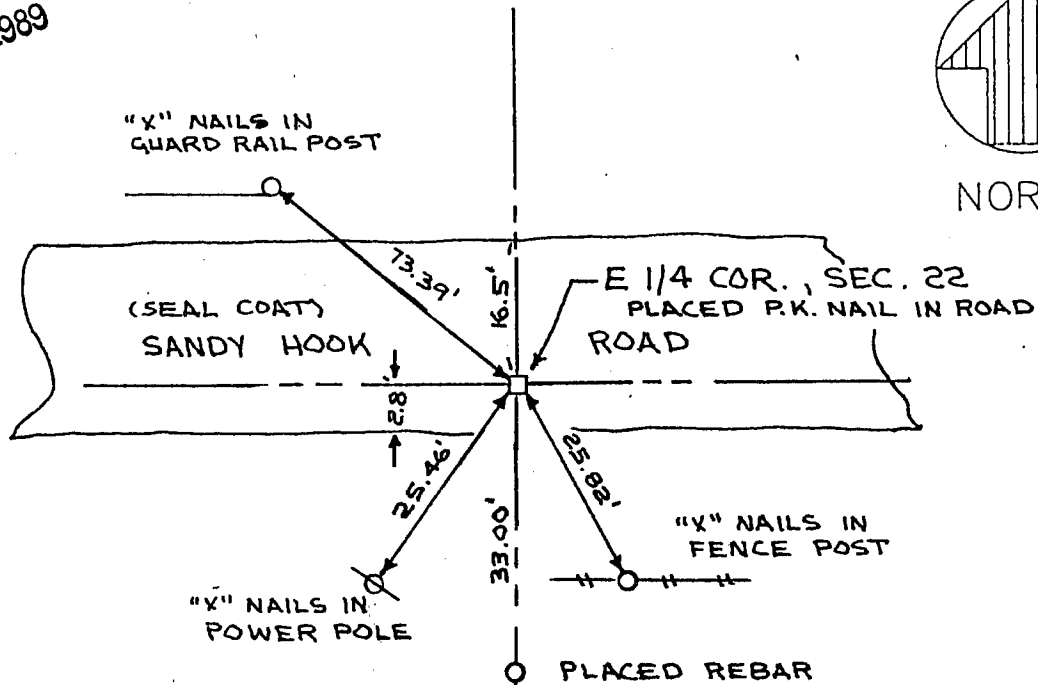
MONUMENT: FOUND PLACED

METHOD: ACCEPTED EXISTING LOCATION
ACCEPTED OCCUPATION
LOST CORNER PORPORTION METHODS
RE-ESTABLISHED FROM TIES



NORTH

JUL 25 1989



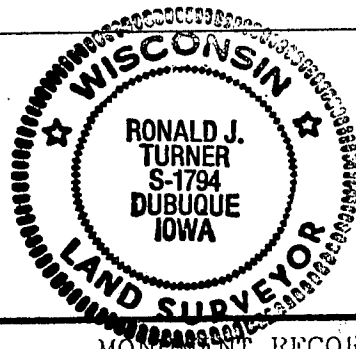
LEGEND

- GOVERNMENT CORNER
- EXISTING FENCE LINES
- POWER POLE
- EXISTING IRON AS SHOWN
- PLACED REBAR AS SHOWN

HISTORY & OTHER INFORMATION RE-ESTABLISHED FROM PLAT OF SURVEY PREPARED BY JOHN F. ORTH FOR PLACKE TO VOGT PROPERTY ON DEC. 4, 1979

I HEREBY CERTIFY THAT THIS MONUMENT RECORD WAS MADE BY ME OR UNDER MY DIRECT PESONAL SUPERVISION AND THAT I AM A DULY REGISTERED LAND SURVEYOR UNDER THE LAWS OF THE STATE OF WISCONSIN.

Ronald J. Turner
RONALD J. TURNER WISCONSIN REG. NO. S-1794 MAY 1 1989



W ENGINEERS & SURVEYORS P.C.

3210 ST. JOSEPH DR. DUBUQUE, IA 52001 (319)556-2464
P.O. BOX 275 GALLNA, IL 61036 (815) 777-0358
302 S. RIVLR PARK DR. CUTTENBERG, IA (319)252-3023

TITLE
MONUMENT RECORD
JAMESTOWN TOWNSHIP
SECTION 22

DATE	5-1-89	SCALE	NO SCALE	PROJECT NO. 89715
DRAWN	JPK	FIELD BOOK	401	
REVISION		REVIEWED	RJT	

75