

12077

Grant County Certified U.S. Public Land Survey Monument Record

DATUM : NAD83 (2011) WISCONS

GRANT COUNTY COORDINATES

CONTROL IS A COMBINATION OF GPS AND CONVENTIONAL FIELD CONTROL

NORTH 413064.52

EAST 848109.70

The East quarter corner of Section 21, Town 1 North, Range 2 West, Town of Jamestown, Grant County, Wisconsin.

(A) Identify the corner by reference to the U.S. public land survey system.

concrete culvert + a spike
WITNESS TO CORNER LOCATION:
Bruce D. Bowden



(E) The corner was restored through acceptance of
(1) an obliterated evidence location
(2) a found perpetuated location
(3) lost corner proportionate methods

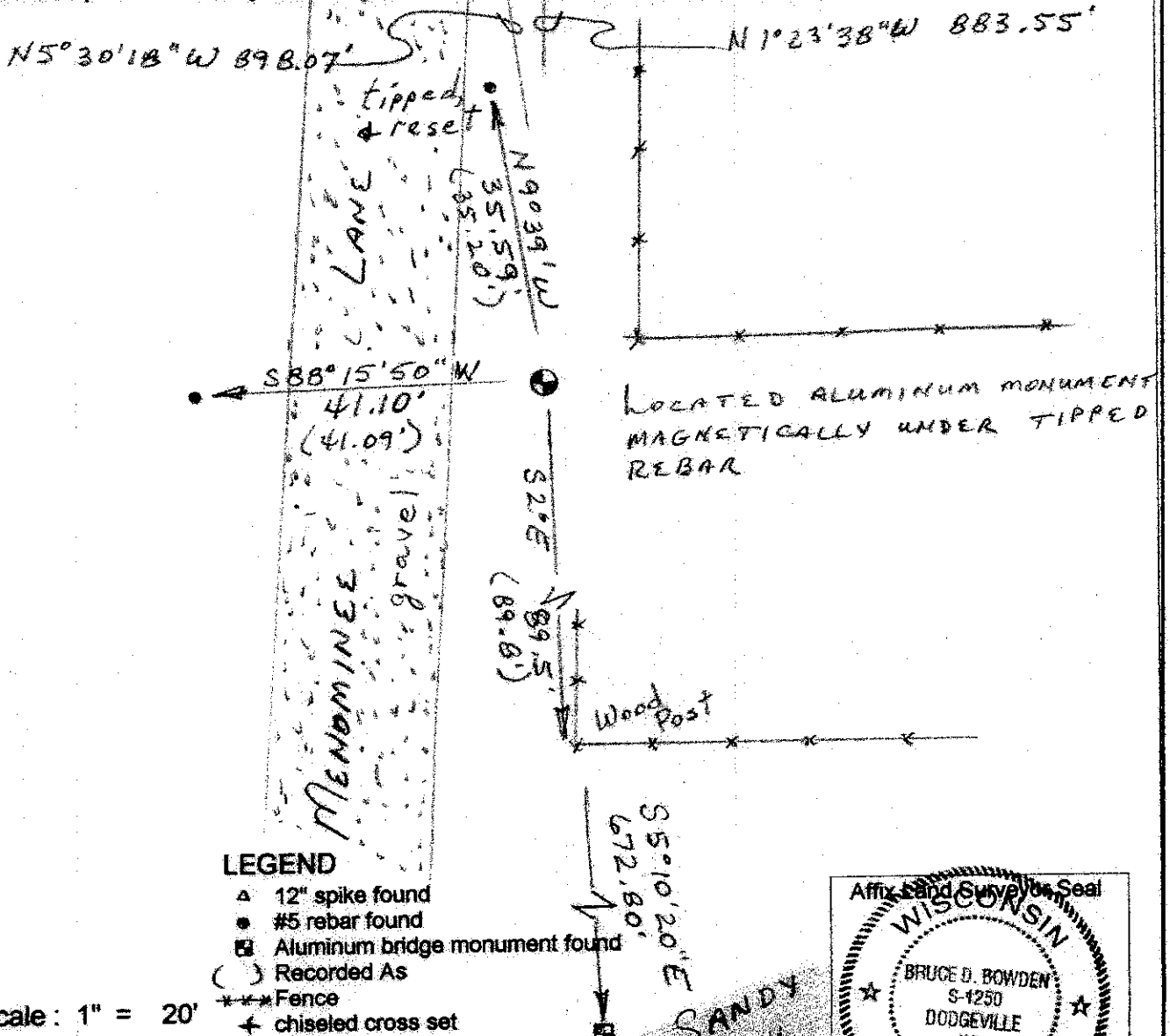
= Corner monument restored or maintained.

Sec. 21, T 1 N, R 2 W

(B) Describe any record evidence, monument evidence, occupational evidence, testimonial evidence or any other material evidence you considered, and whether the monument was placed or found.

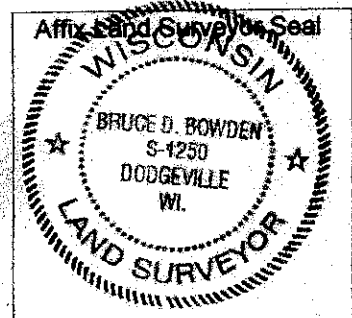
I found the aluminum capped rebar to be tipped and disturbed. The 4" diameter cast aluminum monument is buried 4'± under the rebar. Additional ties have been shown to perpetuate this location.

(C, D, F, G) Plan view drawing below, provide reference ties to at least 4 witness monuments, or, if the location is within a municipality, to at least 2 witness monuments. Depict the relevant monuments and reference ties in sufficient detail to enable accurate relocation of the corner monument, if disturbed. Indicate North. Describe any material discrepancy between the location of the corner as restored or reestablished and the location of that corner as previously monumented by distance and direction. Show the discrepancy on the plan view and the distances between the corner as previously monumented. If the corner was reestablished through lost corner proportionate methods, show the method, including the directions and distances to other public land survey corners used for proportioning in determining the corner location.



(H) I, Bruce D. Bowden do certify that the corner location shown on this record was determined by me or under my direction and control and that this U.S. Public Land Survey Monument Record is correct and complete to the best of my knowledge and belief.

Bruce D. Bowden 12/6/17
Signature Date



Rompert No. 77
Grant Co. Index No. 20102212000

Jamestown Twp.

U.S. PUBLIC LAND SURVEY MONUMENT RECORD

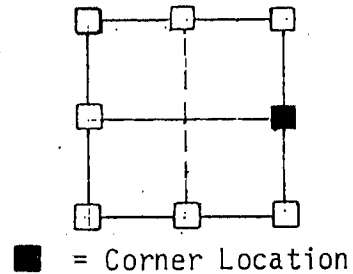
GRANT COUNTY, WISCONSIN

SECTION 21 TOWNSHIP 1N RANGE 2W CORNER E 1/4

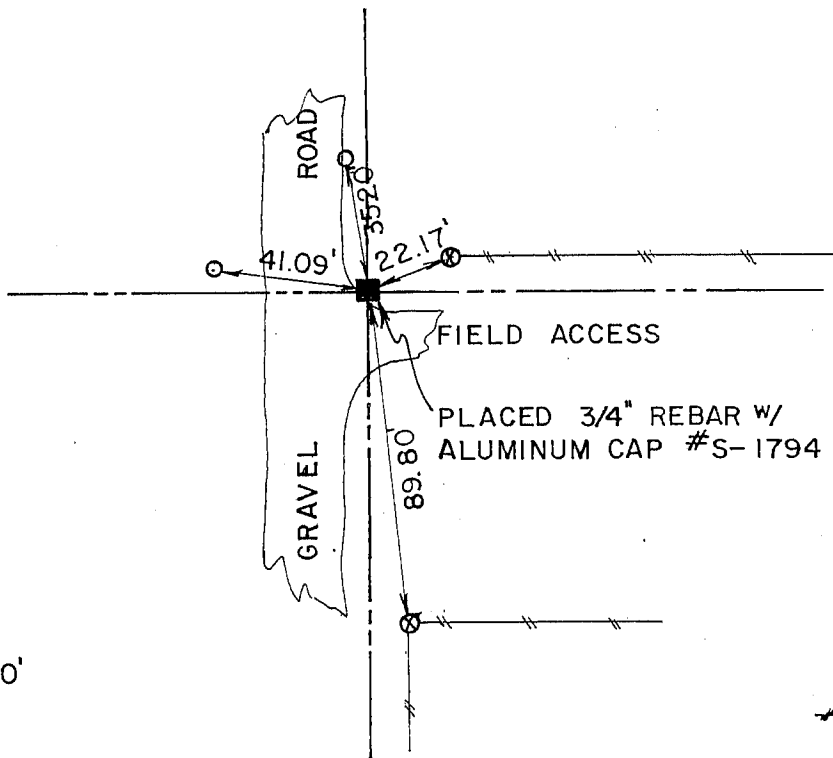
EVIDENCE: Corner placed by information from U.S. Public Land Survey Monument Record as established by Bruce D. Bowden, April 24, 1978.

MONUMENT: Found Placed

METHOD: Accepted Existing Location
Accepted Occupation
Lost Corner Porportionate Methods



SCALE 1" = 50'

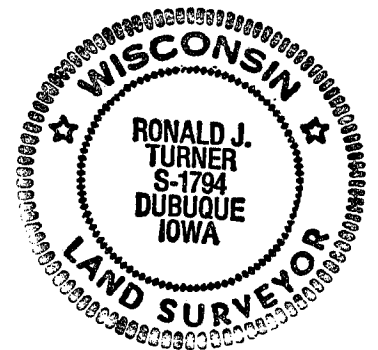


LEGEND

- Government Corner
- Existing Fence Lines
- ⊗ Power Pole
- Existing Iron Pipe as shown
- Placed Rebar (3/4) as shown
- ⊗ "X" Nails in wood post

HISTORY & OTHER INFORMATION: Corner was lost after a County Road Grading Project in 1979.

I, Ronald J. Turner, hereby certify that the corner location shown hereon this record was determined by me or under my direction and control and that this U.S. Public Land Survey Monument Record is correct and complete to the best of my knowledge and belief.



July 11, 1986
Date

Ronald J. Turner
Registered Land Surveyor
No. S-1794

AUG 7 1986



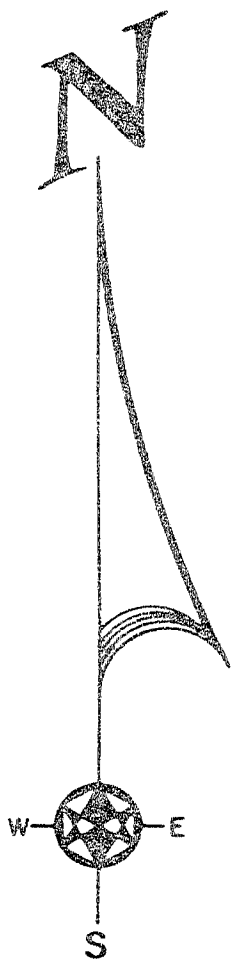
3210 St. Joseph Dr., R.R. #2 • Dubuque, IA 52001 • (319) 566-2464
P.O. Box 275 • Galena, IL 61036 • (815) 777-0359

Title LEIBFRIED SURVEY GRANT CO., WISC.		Sheet 1 of 1
Date JULY 11, 1986	Scale	Drawing No. 86700-2B
Drawn S.M.D.	Field Book WI-1-85	
Reviewed R.J.T.	Revision	

877

SECTION CORNER TIES

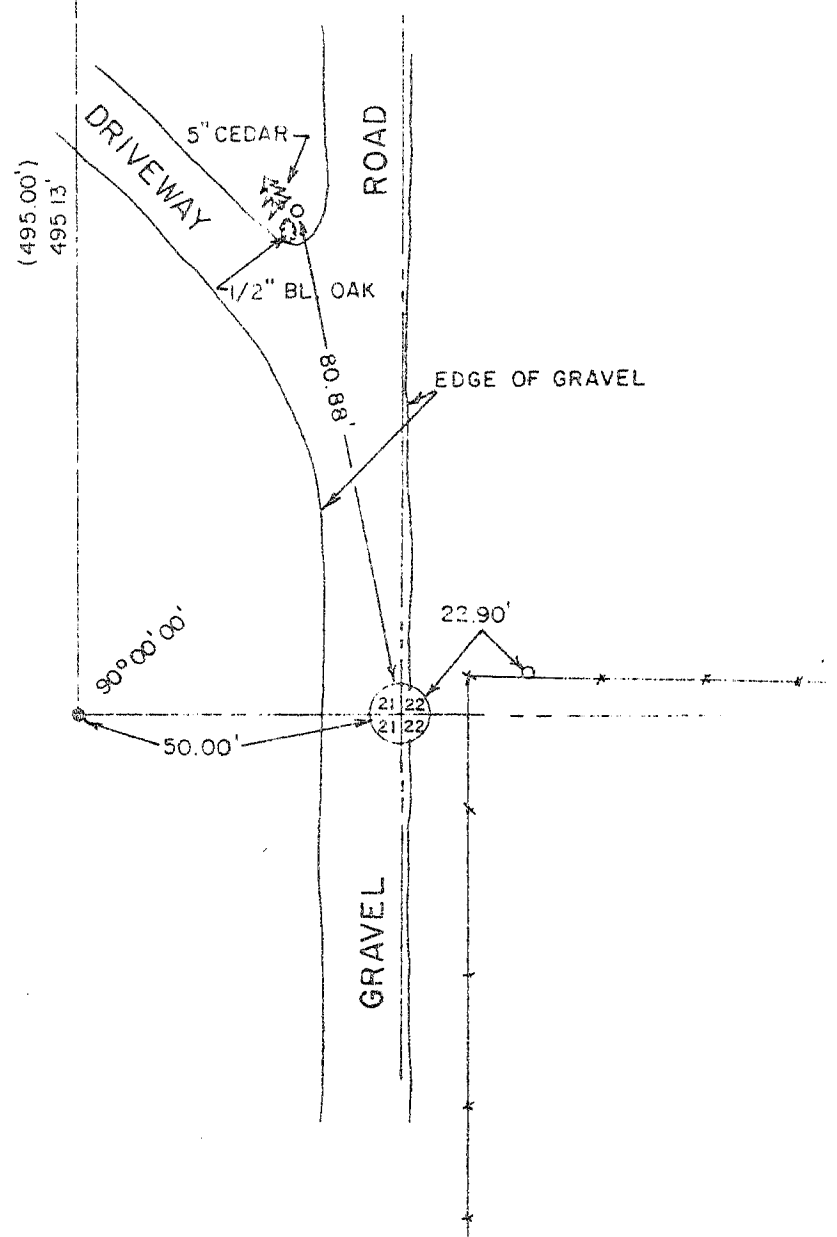
TO THE EAST 1/4 CORNER OF SECTION 21, TOWN 1 NORTH,
RANGE 2 WEST, FOURTH PRINCIPLE MERIDIAN, JAMESTOWN
TOWNSHIP, GRANT COUNTY, WISCONSIN.



I, Bruce D. Bowden, hereby certify that I have
complied with the Wisconsin Statutes, the Statutes
of the United States and the rules and regulations
of the Secretary of the Interior in the location of
the corner shown below.

April 24, 1978

Bruce D. Bowden
Bruce D. Bowden R.I.S.-1250



Surveyed by D.C.
1978

STATE PLANE COORDINATES -
NAD 83 1000000 914
EAST 1007500 122

LEGEND

-
-
-

BOOK D-1 PAGE 47
JOB NO. D-78007
CHECKED [Signature]
DRAWN BY [Signature]

SCALE: 1" = 30'

TALARCZYK & ASSOC., INC.
110 E. Division Street
DODGEVILLE, WI 53533
Phone 608/935-5301

177