

12077.5

U.S. PUBLIC LAND SURVEY MONUMENT RECORD - GRANT COUNTY, WI

Section 22, Town 1 North Range 2 West, Town of Jamestown (a)

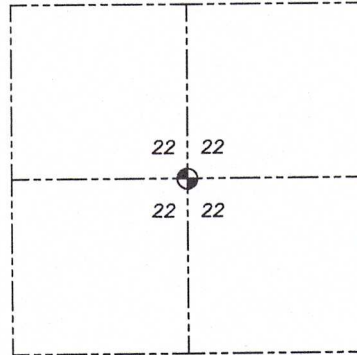
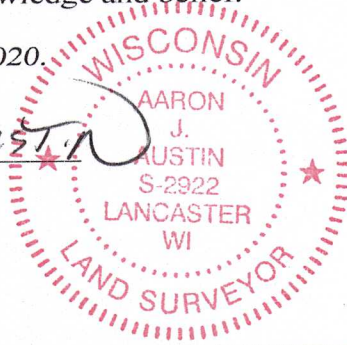
NOTE: This form is intended and designed to fulfill all requirements of the Wisconsin Administrative Code Chapter A-E 7.08, U.S. Public Land Survey Monument Record (3) (a) (b) (c) (d) (e) (f) (g) (h) (i).

CERTIFICATE: (i)

I, Aaron J. Austin, Wisconsin Professional Land Surveyor, do hereby certify that the corner location on this record was determined by me and/or under my direct supervision and that this U.S. Public Land Survey Monument Record is correct and complete to the best of my knowledge and belief.

Dated this 10th day of April, 2020.

Aaron J. Austin
Aaron J. Austin, S-2922



● = CORNER LOCATION

Grant County Coordinates:
NAD 83 (2011)
Northing: 413,110.60
Easting: 850,762.63

HISTORY OF CORNER ESTABLISHMENT:

Corner was not set with the Original Government Survey.
Ronald Turner set a P.K. Nail at the surface and prepared a Survey Monument Record dated 5/1/1989.

DESCRIPTION OF CORNER EVIDENCE FOUND: (b) (f) (g) (h)

I found a Railroad Spike as noted on multiple surveys at the corner. I established four witness corners after I verified the Monument's location with G.P.S. and E.D.M. methods.

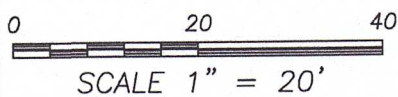
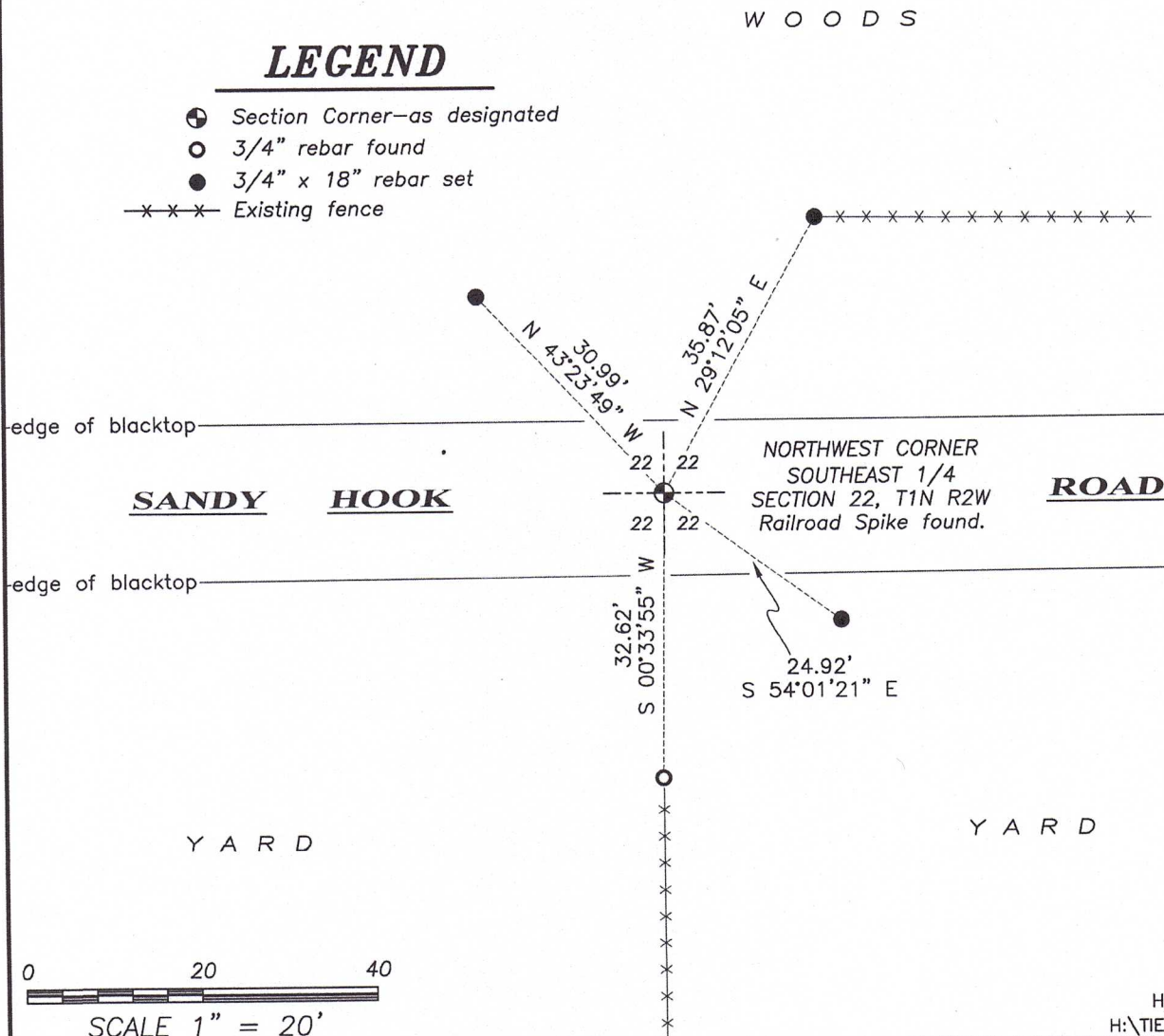
DESCRIPTION OF CORNER AND WITNESS MONUMENTS, references and accessories used to perpetuate the original or re-established location of this corner. (c) (d) (e)

Witnesses to corner location Shane Austin, Owen Austin.
Drawn by: Owen Austin

SKETCH:

LEGEND

- Section Corner—as designated
- 3/4" rebar found
- 3/4" x 18" rebar set
- x-x-x- Existing fence



JUL 25 1989

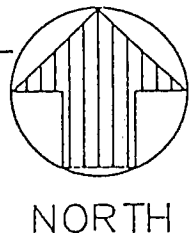
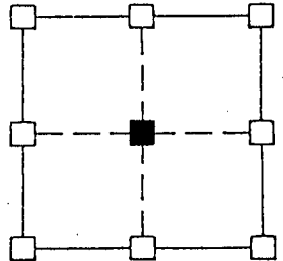
U. S. PUBLIC LAND SURVEY MONUMENT RECORD

GRANT COUNTY, WISCONSIN

SECTION 22 TOWNSHIP 4N RANGE 2 W CORNER CTR.
EVIDENCE FOUND IRON MON. UNDER ROADWAY IN LINE WITH
NORTH - SOUTH OCCUPATION LINES - PLACED P.K. NAIL AT
SAME LOCATION.

MONUMENT: FOUND PLACED

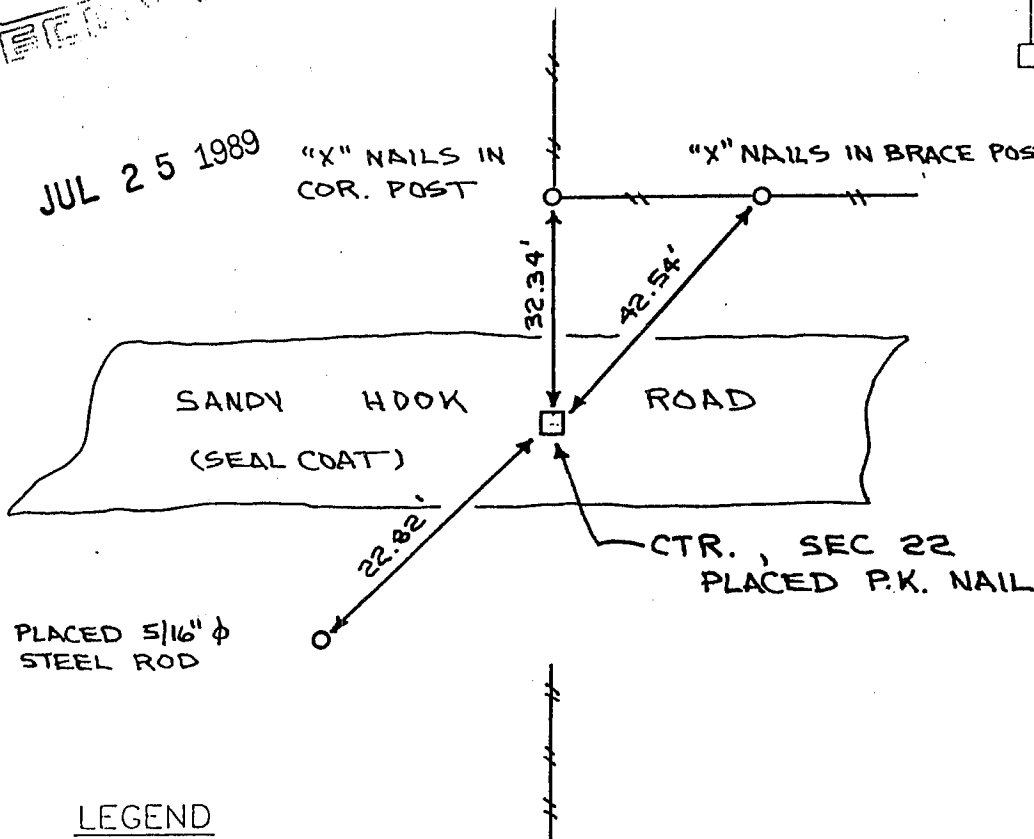
METHOD: ACCEPTED EXISTING LOCATION
ACCEPTED OCCUPATION
LOST CORNER PROPORTION METHODS
RE-ESTABLISHED FROM TIES



JUL 25 1989

"X" NAILS IN COR. POST

"X" NAILS IN BRACE POST



LEGEND

- GOVERNMENT CORNER
- EXISTING FENCE LINES
- POWER POLE
- EXISTING IRON AS SHOWN
- PLACED REBAR AS SHOWN

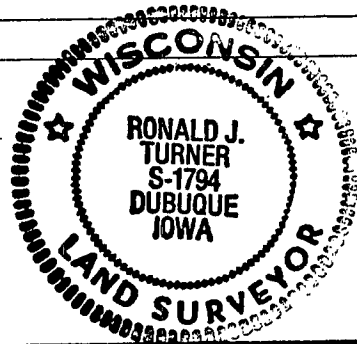
HISTORY & OTHER INFORMATION

I HEREBY CERTIFY THAT THIS MONUMENT RECORD WAS MADE BY ME OR UNDER MY DIRECT PERSONAL SUPERVISION AND THAT I AM A DULY REGISTERED LAND SURVEYOR UNDER THE LAWS OF THE STATE OF WISCONSIN.

Ronald J. Turner
RONALD J. TURNER

MAY 1 1989

WISCONSIN REG. NO. S-1794



W ENGINEERS & SURVEYORS P.C.

3210 ST. JOSEPH DR. DUBUQUE, IA 52001 (319)556-2464
P.O. BOX 275 GALLNA, IL 61030 (815) 771-0350
302 S. RIVIER PARK DR. GUTTENBERG, IA (319)252-3023

TITLE

MONUMENT RECORD
JAMESTOWN TOWNSHIP
SECTION 22

DATE 5-1-89
DRAWN JPK
REVISION

SCALE NO SCALE
FIELD BOOK 401
REVIEWED RJT

PROJECT NO. 89715

P-715