

12076

# Grant County Certified U.S. Public Land Survey Monument Record

DATUM: NAD83 (2011) WISCORS

GRANT COUNTY COORDINATES

CONTROL IS A COMBINATION OF GPS AND CONVENTIONAL FIELD CONTROL

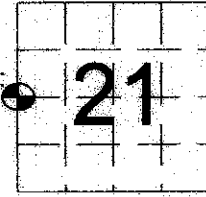
NORTH 413010.35

EAST 842861.36

The West quarter corner of Section 21, Town 1 North,  
Range 2 West, Town of Jamestown, Grant County, WI.

(A) Identify the corner by reference to the U.S. public land survey system.

WITNESS TO CORNER LOCATION:



- (E) The corner was restored through acceptance of
  - (1) an obliterated evidence location
  - (2) a found perpetuated location
  - (3) lost corner proportionate methods

= Corner monument restored or maintained.

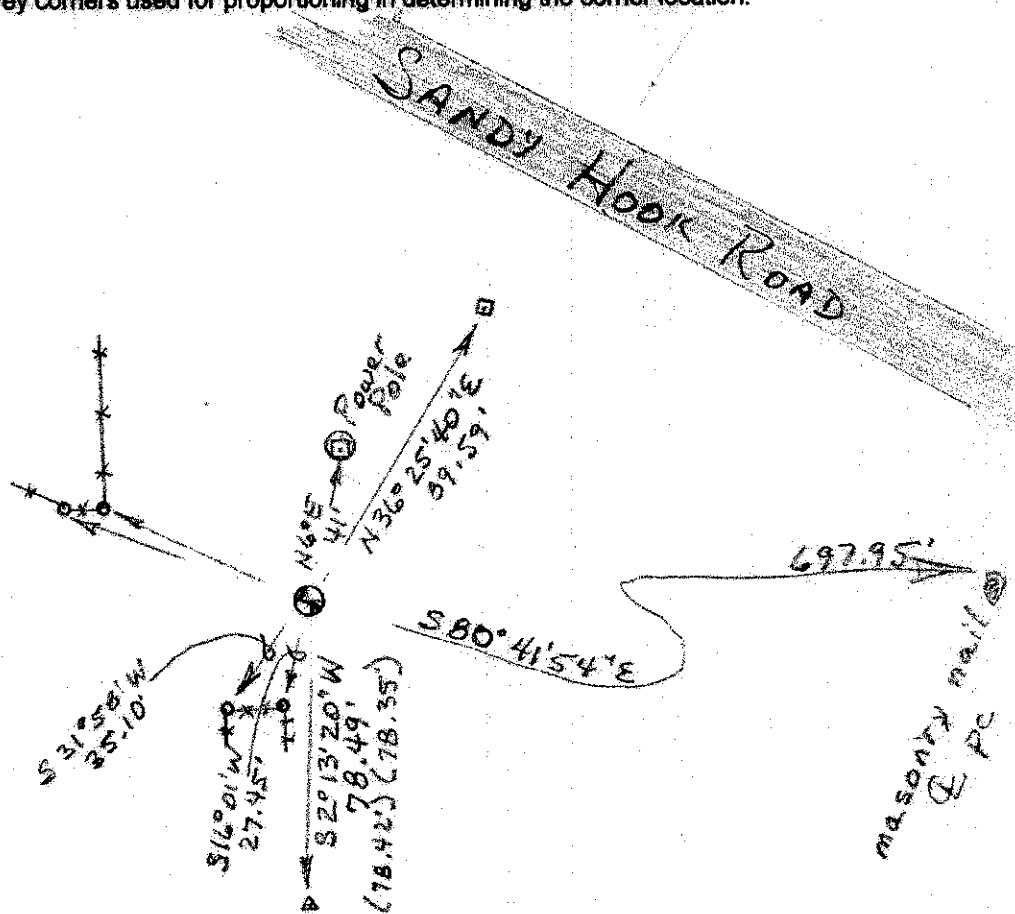
Bruce D. Bowden

Sec. 21, T 1 N, R 2 W

(B) Describe any record evidence, monument evidence, occupational evidence, testimonial evidence or any other material evidence you considered, and whether the monument was placed or found.

I found the #6 rebar buried as shown on tie sheets by Jay Adams and Todd Hasse to be in the same location as the aluminum monument I set to replace the "T" post of the Grant County Surveyor. The aluminum appears to have been buried by siltation of the drainage channel or removed by erosion of the same. Additional ties are shown to perpetuate this location.

(C, D, F, G) Plan view drawing below, provide reference ties to at least 4 witness monuments, or, if the location is within a municipality, to at least 2 witness monuments. Depict the relevant monuments and reference ties in sufficient detail to enable accurate relocation of the corner monument, if disturbed. Indicate North. Describe any material discrepancy between the location of the corner as restored or reestablished and the location of that corner as previously monumented by distance and direction. Show the discrepancy on the plan view and the distances between the corner as previously monumented. If the corner was reestablished through lost corner proportionate methods, show the method, including the directions and distances to other public land survey corners used for proportioning in determining the corner location.



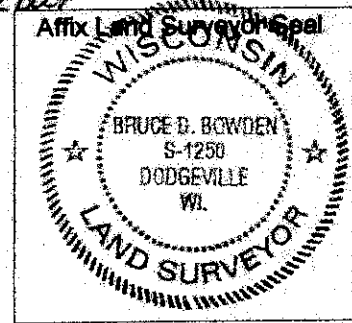
### LEGEND

- Cast Aluminum Monument *under #6 rebar*
- 2" Pipe - chain link fence corner
- Flag pole
- 1 1/2" Pipe Found
- Recorded As
- Fence - chain link

Scale: 1" = 50'

(H) I, Bruce D. Bowden do certify that the corner location shown on this record was determined by me or under my direction and control and that this U.S. Public Land Survey Monument Record is correct and complete to the best of my knowledge and belief.

*Bruce D. Bowden*  
Signature Date 12/6/17



Romportl No. 20102202000  
Grant Co. Index No. 76

# GRANT COUNTY U.S. PUBLIC LAND SURVEY MONUMENT RECORD

INSTRUCTIONS: THIS RECORD SHALL SHOW THE LOCATION OF THE CORNER AND SHALL INCLUDE ALL OF THE FOLLOWING ELEMENTS (A THROUGH I)

(A) IDENTIFY THE CORNER BY REFERENCE TO THE U.S. PUBLIC LAND SURVEY SYSTEM

■ = CORNER MONUMENT RESTORED

WITNESSES TO CORNER LOCATION:

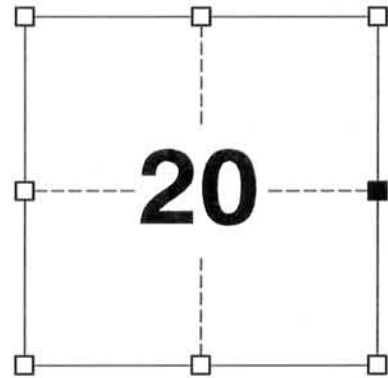
JAY P. ADAMS  
JEREMY F. KRACHEY

GEOGRAPHIC COORDINATES,  
NAD 83 (2011) ADJUSTMENT:

LATITUDE: 42° 32' 39.4667"  
LONGITUDE: 90° 37' 20.6653"

WISCONSIN COUNTY COORDINATE SYSTEM (WCCS), GRANT COUNTY,  
NAD 83 (2011) ADJUSTMENT:

NORTHING: 413,010.35  
EASTING: 842,861.36

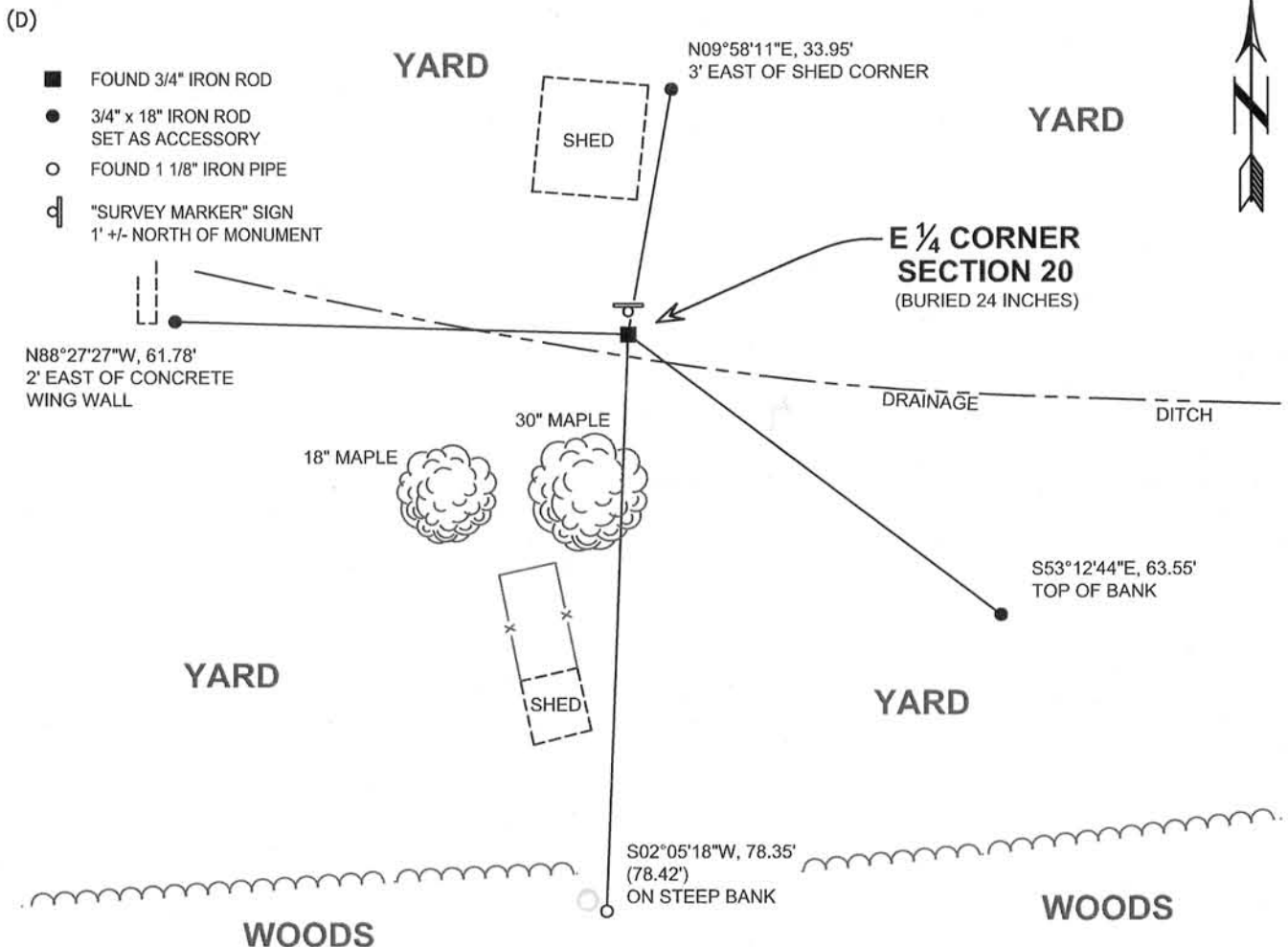


SECTION 20  
TOWNSHIP 1 NORTH, RANGE 2 WEST  
TOWN OF JAMESTOWN

(B) DESCRIBE ANY RECORD EVIDENCE, MONUMENT EVIDENCE, OCCUPATIONAL EVIDENCE, TESTIMONIAL EVIDENCE, OR ANY OTHER MATERIAL EVIDENCE YOU CONSIDERED, AND WHETHER THE MONUMENT WAS FOUND OR PLACED.

I COULD FIND NO MONUMENT OR BEARING TREES FROM THE ORIGINAL GOVERNMENT SURVEY OR BOWDEN'S CAST ALUMINUM MONUMENT. I RECOVERED THE 3/4 INCH DIAMETER IRON ROD SET BY WRIGHT ALONG WITH A BOWDEN TIE. AND AFTER VERIFYING ITS LOCATION WITH BOWDEN'S TIES, I ACCEPTED THE LOCATION OF THE 3/4 INCH IRON ROD AS THE BEST AVAILABLE EVIDENCE OF THE ORIGINAL GOVERNMENT CORNER AND I LEFT IT IN PLACE.

(C) IN THE PLAN VIEW DRAWING BELOW, PROVIDE REFERENCE TIES TO AT LEAST 4 WITNESS MONUMENTS, (WITNESS MONUMENTS SHALL BE MADE OF CONCRETE, NATURAL STONE, IRON OR ANY OTHER EQUALLY DURABLE MATERIAL.) DESCRIBE WITNESS MONUMENTS.



(E) DESCRIBE ANY MATERIAL DISCREPANCY BETWEEN THE LOCATION OF THE CORNER AS RESTORED OR REESTABLISHED AND THE LOCATION OF THAT CORNER AS PREVIOUSLY RESTORED OR REESTABLISHED BY DISTANCE AND DIRECTION. SHOW THE DISCREPANCY ON THE PLAN VIEW DRAWING UNDER (D), ABOVE. SHOW THE DISTANCES BETWEEN THE CORNER AS PREVIOUSLY RESTORED OR REESTABLISHED AND (1) THE CORNER AS RESTORED OR REESTABLISHED, AND (2) TO AT LEAST 2 OF THE WITNESS MONUMENTS SHOWN ON THE DRAWING IN (D) ABOVE.

N/A

(F) WAS THE CORNER RESTORED THROUGH ACCEPTANCE OF (1) AN OBLITERATED EVIDENCE LOCATION, OR, (2) A FOUND PERPETUATED LOCATION?

(2) A FOUND PERPETUATED LOCATION

(G&H) WAS THE CORNER REESTABLISHED THROUGH LOST CORNER PROPORTIONATE METHODS? IF SO, SHOW THE METHOD, INCLUDING THE DIRECTIONS AND DISTANCES TO OTHER PUBLIC LAND SURVEY CORNERS USED AS EVIDENCE OR USED FOR PROPORTIONING IN DETERMINING THE CORNER LOCATION.

N/A

CORNER HISTORY

ORIGINAL GOVERNMENT CORNER ESTABLISHED BY LUCIUS LYON IN THE 2ND QUARTER OF 1832.

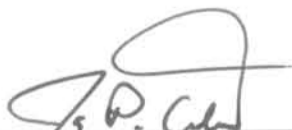
IN A TIE SHEET DATED 1978, BRUCE BOWDEN SET A CAST ALUMINUM MONUMENT AT THE CORNER IN PLACE OF A "T" POST PREVIOUSLY USED AND RECORDED IN GRANT COUNTY SURVEY RECORDS.

IN A PLAT OF SURVEY DATED 12 JANUARY 1993, WARNER WRIGHT REPORTED SETTING A 3/4 INCH IRON ROD AT THE CORNER.

SINCE THAT SURVEY, NUMEROUS AREA SURVEYORS HAVE REPORTED FINDING A 3/4 INCH IRON ROD AT THE CORNER.

AFFIX LAND SURVEYOR SEAL

(I) I, JAY P. ADAMS, R.L.S. 2879, CERTIFY THAT THE CORNER LOCATION SHOWN ON THIS RECORD WAS DETERMINED BY ME OR UNDER MY DIRECTION AND CONTROL AND THAT THIS U.S. PUBLIC LAND SURVEY MONUMENT RECORD IS CORRECT AND COMPLETE TO THE BEST OF MY KNOWLEDGE AND BELIEF.



SIGNATURE

28 OCTOBER 2013

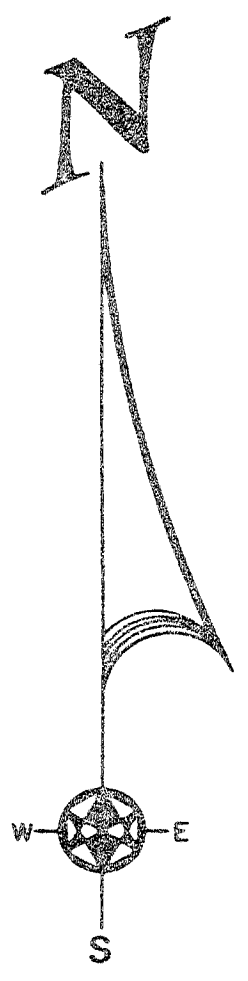
DATE



# SECTION CORNER TIES

TO THE WEST ONE-QUARTER SECTION 21,  
TOWNSHIP 10N, RANGE 10E, 1ST  
PRINCIPAL MERIDIAN, STATE OF WISCONSIN.

I, Bruce W. Bowler, hereby certify that  
I have complied with the provisions of the  
the Statutes of the State of Wisconsin, and the  
rules and regulations of the Department  
of Transportation, in the location  
of the corner ties shown hereon.

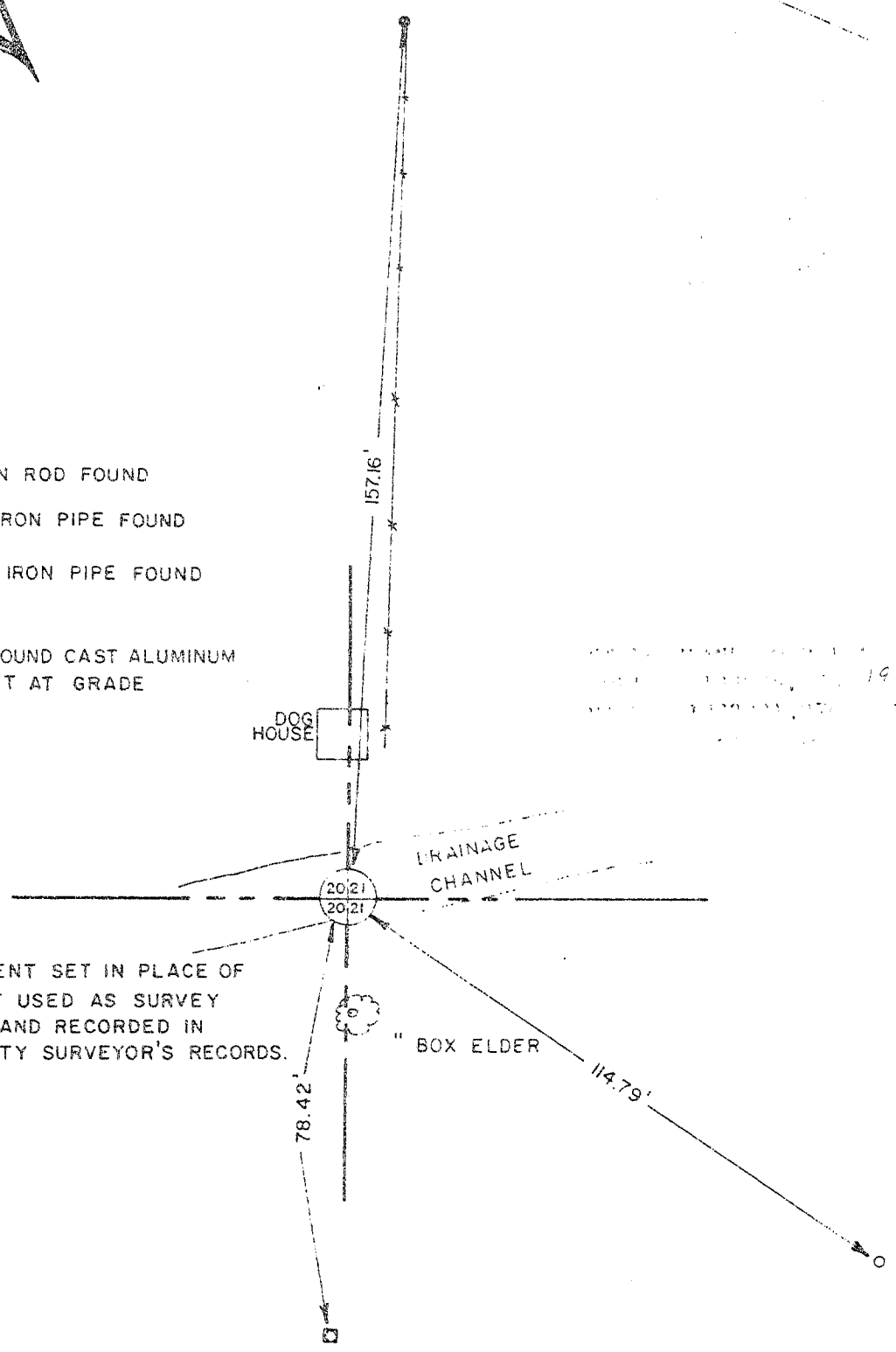


CENTERLINE OF SANDY HOOK ROAD

*Bruce W. Bowler*  
*Jawentown*

## LEGEND

- 5/8" IRON ROD FOUND
- 3/4" O.D. IRON PIPE FOUND
- ◻ 1 1/8" O.D IRON PIPE FOUND
- ⊙ 4" x 30" ROUND CAST ALUMINUM MONUMENT AT GRADE



NOTE: MONUMENT SET IN PLACE OF  
7" "T" POST USED AS SURVEY  
MONUMENT AND RECORDED IN  
GRANT COUNTY SURVEYOR'S RECORDS.

BOOK D-1 PAGE 47  
JOB NO. D-78007  
CHECKED *RJM*  
DRAWN BY *RJM*

SCALE: 1" = 30'

TALARCZYK & ASSOC., INC.

110 E. Division Street  
DODGEVILLE, WI 53533

Phone 608/935-5301

*P-76*

# U.S. PUBLIC LAND SURVEY MONUMENT RECORD

FEB 28 1996



To the E 1/4 corner of Section 20, Town 1 North, Range 2 West, Town of Jamestown, Grant County, Wisconsin.

NOTE: Top of monument is 1' below grade.

I, Todd E. Hasse, hereby certify that I have complied with the Wisconsin Statutes, Statutes of the United States and the rules and regulations made by the Secretary of the interior in the location of the corner as shown below.





2-26-1996

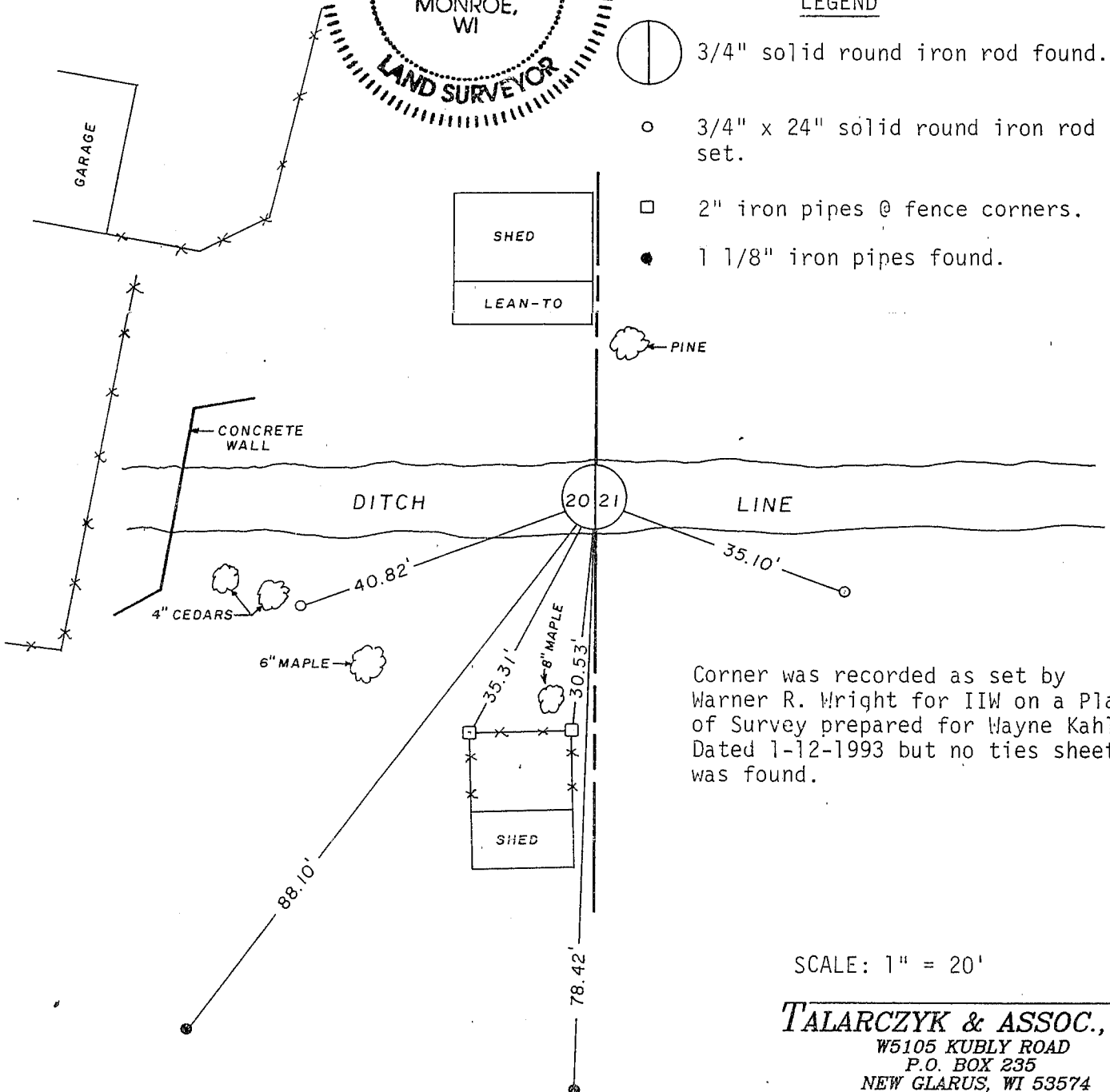
*Todd E. Hasse*

Todd E. Hasse



LEGEND

-  3/4" solid round iron rod found.
-  3/4" x 24" solid round iron rod set.
-  2" iron pipes @ fence corners.
-  1 1/8" iron pipes found.



Corner was recorded as set by Warner R. Wright for IIW on a Plat of Survey prepared for Wayne Kahle Dated 1-12-1993 but no ties sheet was found.

SCALE: 1" = 20'

**TALARCZYK & ASSOC., INC.**

W5105 KUBLY ROAD  
P.O. BOX 235  
NEW GLARUS, WI 53574  
PHONE 608/527-5216  
FAX 608/527-5357