

U.S. PUBLIC LAND SURVEY MONUMENT RECORD - GRANT COUNTY, WI

Section 21, Town 1 North Range 2 West, Town of Jamestown (a)

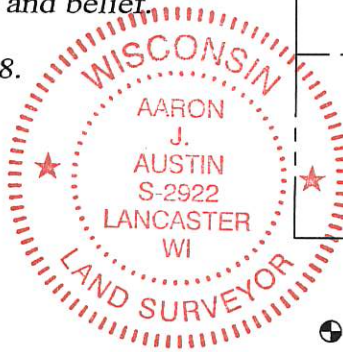
NOTE: This form is intended and designed to fulfill all requirements of the Wisconsin Administrative Code Chapter A-E 7.08, U.S. Public Land Survey Monument Record (3) (a) (b) (c) (d) (e) (f) (g) (h) (i).

CERTIFICATE: (i)

I, Aaron J. Austin, Wisconsin Professional Land Surveyor, do hereby certify that the corner location on this record was determined by me and/or under my direct supervision and that this U.S. Public Land Survey Monument Record is correct and complete to the best of my knowledge and belief.

Dated this 21st day of September, 2018.

Aaron J. Austin
Aaron J. Austin, S-2922



⊕ = CORNER LOCATION

Grant County Coordinates:
NAD 83 (2011)
Northing: 415,665.77
Easting: 845,458.73

HISTORY OF CORNER ESTABLISHMENT:

Original corner was set by Lucius Lyon in 1832.
Bruce Bowden reset the corner and prepared a Survey Monument Record dated 3-31-1978.

DESCRIPTION OF CORNER EVIDENCE FOUND: (b) (f) (g) (h)

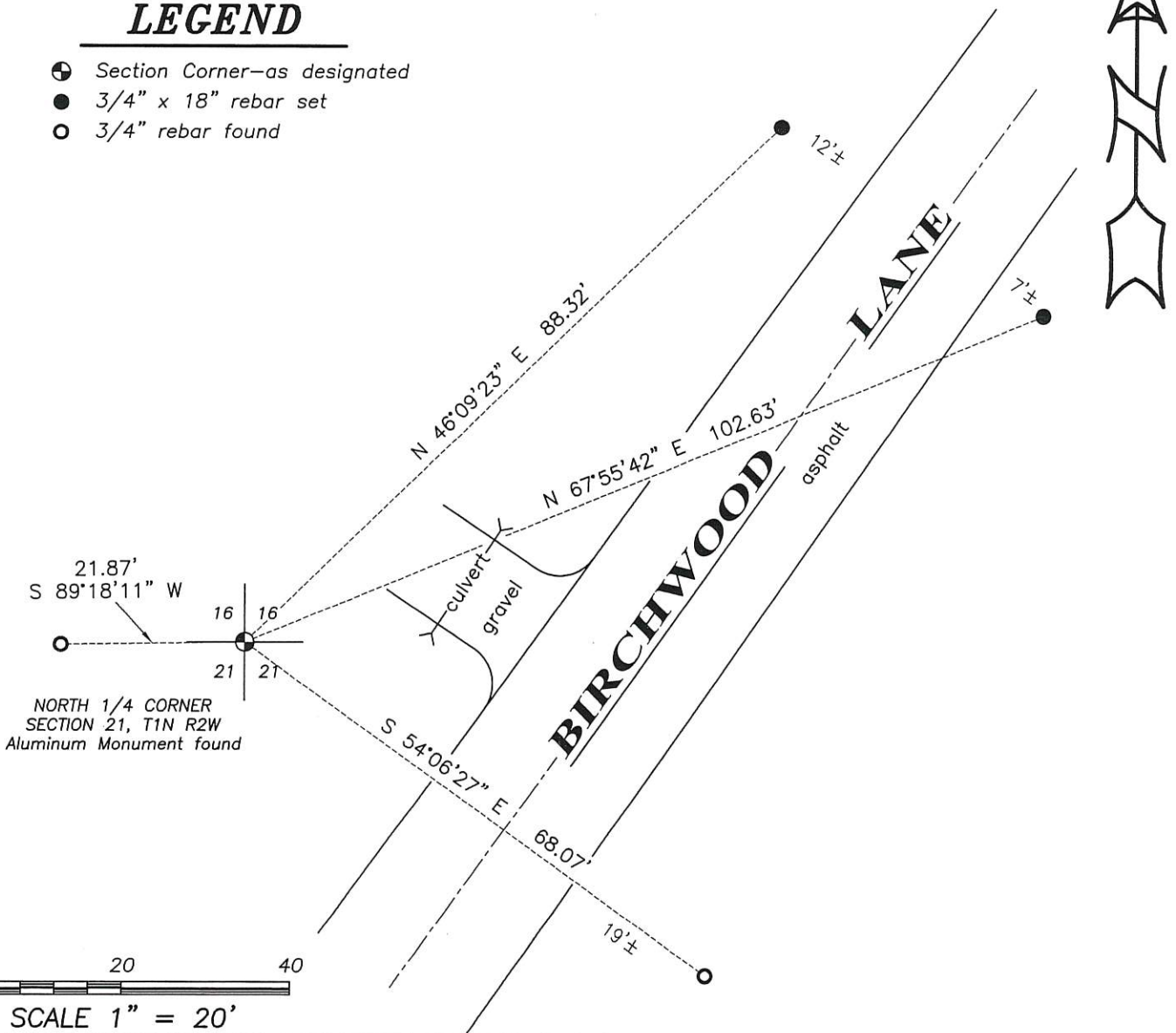
I found the Aluminum Monument as set by Bruce Bowden. I found two witness corners and set two new witness corners after I verified the monument's location with G.P.S. and E.D.M. methods

DESCRIPTION OF CORNER AND WITNESS MONUMENTS: references and accessories used to perpetuate the original or re-established location of this corner. (c) (d) (e)
Witnesses to corner location Shane Austin, Owen Austin.

SKETCH:

LEGEND

- ⊕ Section Corner—as designated
- 3/4" x 18" rebar set
- 3/4" rebar found

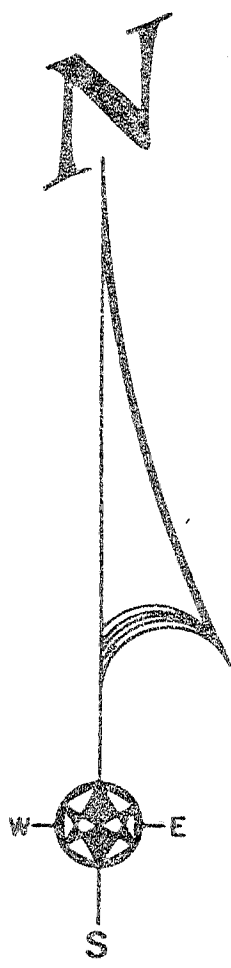


SECTION CORNER TIES

TO BE USED IN CONNECTION WITH THE SURVEY OF SECTION 16,
 TOWNSHIP 36N, RANGE 10E, COUNTY OF WASHINGTON, WISCONSIN.
 THE CORNER IS SET FROM TIES TO PREVIOUS SURVEY BY CARL F. BARTELS DATED FEB. 1972.

Jameson

Richard B...



LEGEND

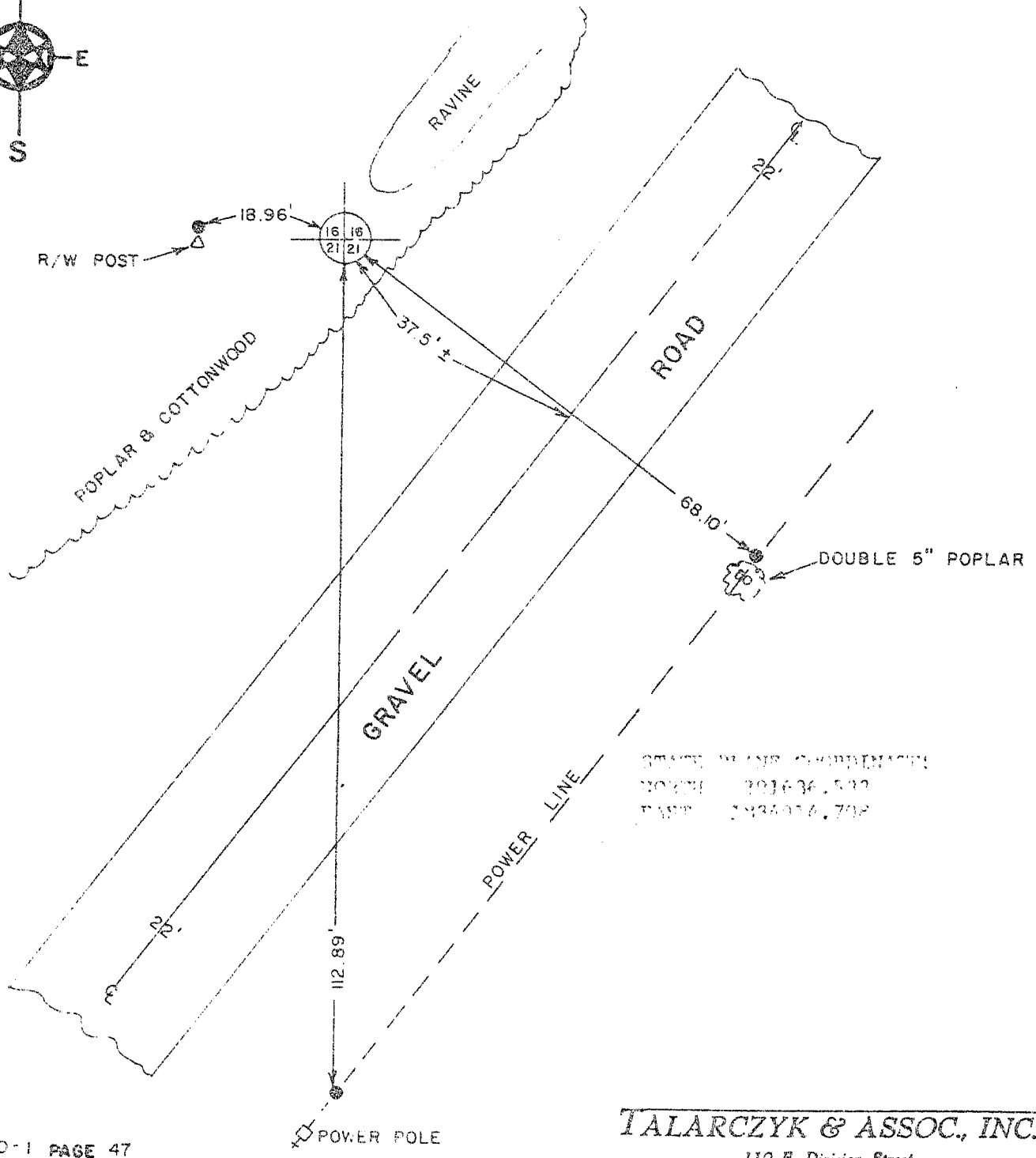


4" x 30" ROUND CAST ALUMINUM MONUMENT (TOP AT GRADE)



3/4" x 24" IRON ROD

CORNER SET FROM TIES TO PREVIOUS SURVEY BY CARL F. BARTELS DATED FEB. 1972.



STATE PLANS CORRECTIONS
 NORTH 191636.532
 EAST 1926076.702

BOOK D-1 PAGE 47
 JOB NO. E-78007
 CHECKED [Signature]
 DRAWN BY RSM

SCALE: 1" = 20'

TALARCZYK & ASSOC., INC.

110 E. Division Street
 DODGEVILLE, WI 53533

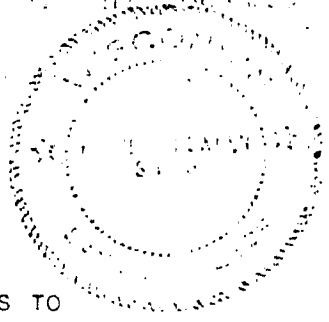
Phone 608/935-5301

68

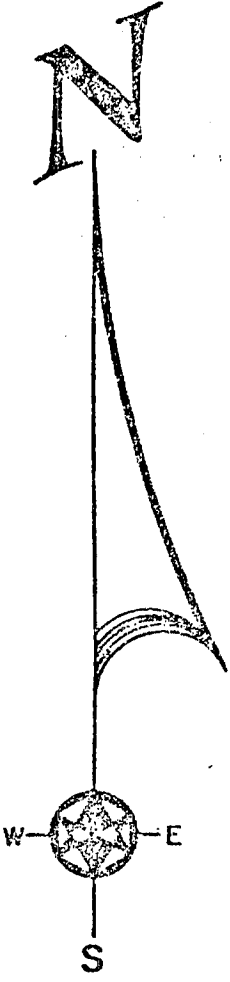
SECTION CORNER TIES

TO THE SOUTHWEST CORNER OF SECTION 16,
 TOWN ONE NORTH, RANGE ONE WEST, S. 100 RANGE
 PUBLIC LANDS, NEBRASKA.

I, Bruce D. Barden, hereby certify that
 I have complied with the Missouri statutes,
 the Statutes of the United States, and the
 rules and regulations made by the Secretary
 of the Interior in the location of the corner
 shown here.
 March 31, 1978





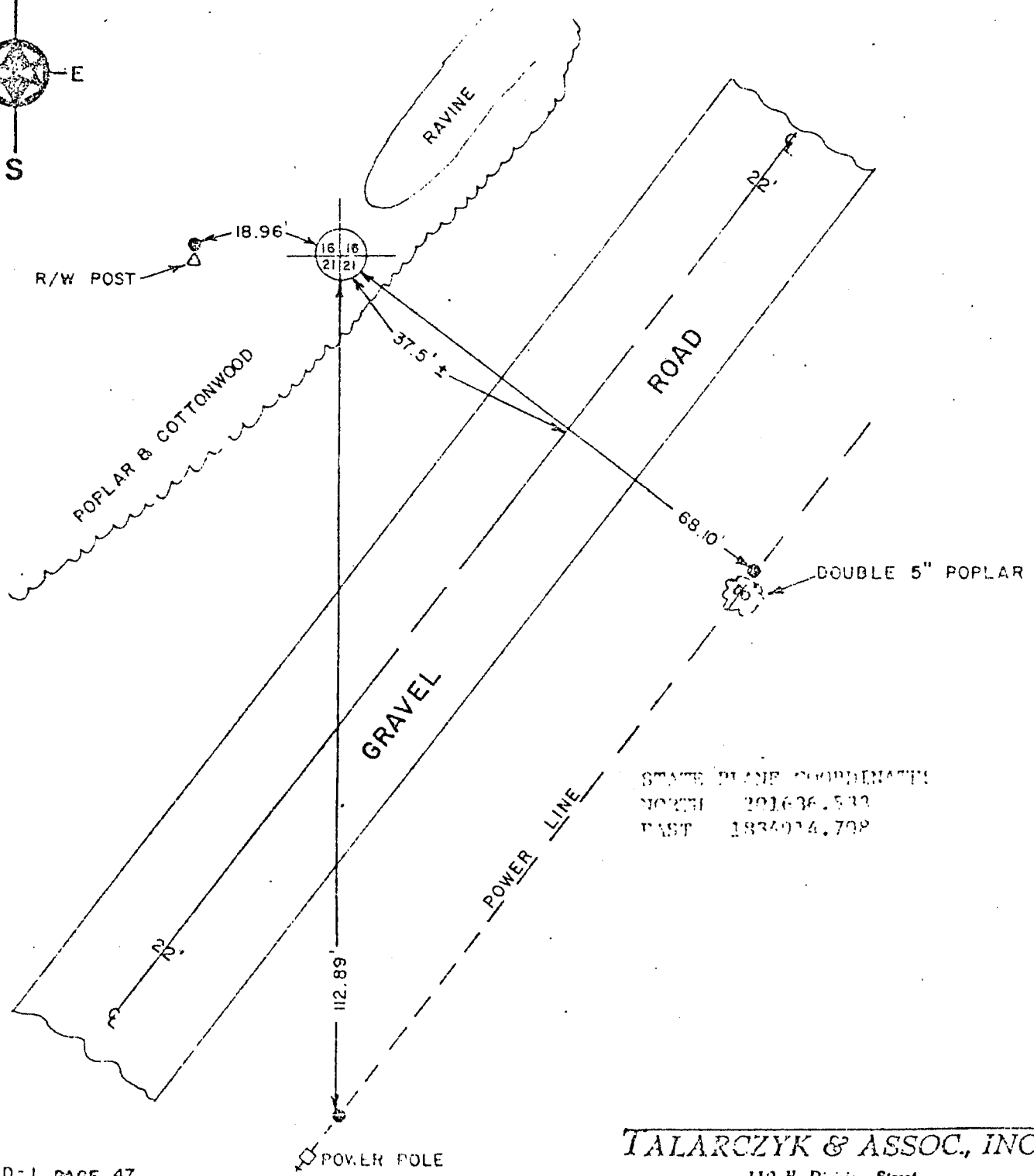
Bruce D. Barden
 Surveyor - Missouri



CORNER SET FROM TIES TO
 PREVIOUS SURVEY BY CARL F.
 BARTELS DATED FEB. 1972.

LEGEND

-  4" x 30" ROUND CAST ALUMINUM MONUMENT (TOP AT GRADE)
-  3/4" x 24" IRON ROD



STATE PLANE COORDINATES
 NORTH 201636.533
 EAST 1834914.708

PK D-1 PAGE 47
 NO. 1-78007
 CKED
 #N BY

SCALE: 1" = 20'

TALARCZYK & ASSOC., INC.
 110 E. Division Street
 DODGEVILLE, WI 53533
 Phone 608/335 5301